



- ### STANDARD COMPONENTS
- Dual operator standup control stations with full instrumentation and LMI display.
 - Four-section fully proportional high-strength steel boom with 107' tip height (152' with jib).
 - Planetary winch with burst-of-speed, 9/16" rotation-resistant rope, and downhaul ball.
 - 20,000 lb two-speed auger system with 2 5/8" hex drive and Kelly bar.
 - "A" Frame front outriggers and rear underslung out-and-down outriggers.
 - Hydraulic system with PTO, gear pump, and 10-micron return line filter.
 - Reverse offset turret on large-diameter ball bearing with 372° non-continuous rotation.
 - Lifetime structural warranty and ANSI A92.2 compliance.



2695F

BOOM TRUCK

FULL SPECS:



Durability Built-In

Heavy-duty boom, subframe, and turret with replaceable wear components ensure long service life.

High Lifting Power

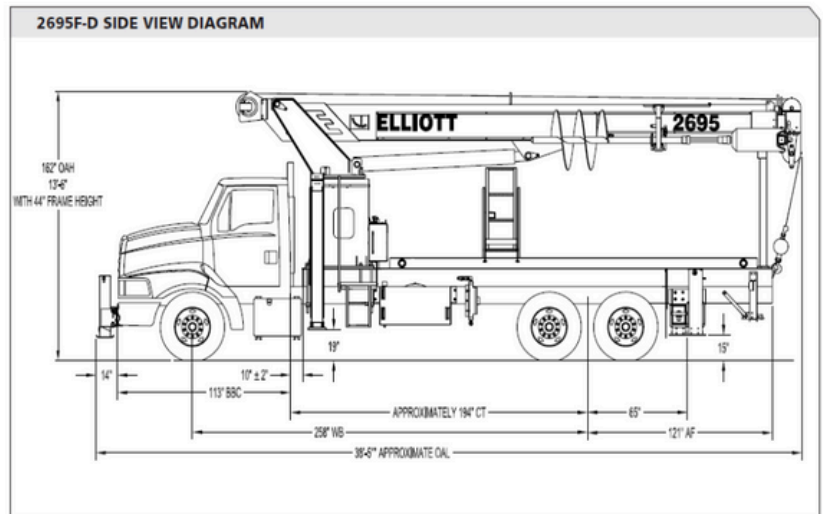
50,060 lbs capacity with a 41' digging radius for versatile lifting and digging applications.

Operative Confidence

Integrated Load Moment Indicator (LMI) with bar graph, mode controls, and anti-two block system for safety and productivity.

Efficient Drilling

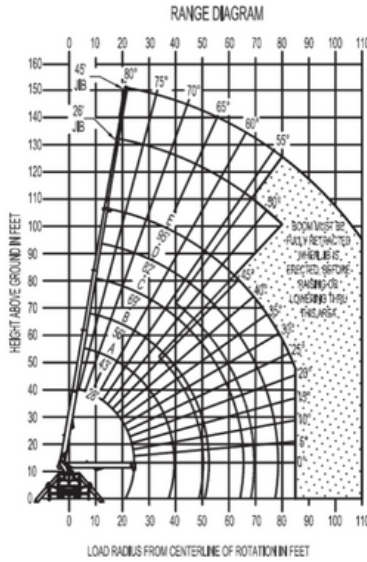
Two-speed hydraulic auger with 20,000 lb torque handles flightings up to 48" for demanding soil conditions.





2695F

BOOM TRUCK



OPTIONS

- 26’-45’ telescopic pin-on jib
- Hydraulic pole claw for dig-and-set applications
- Gravity-leveled steel work platform with mechanical rotation
- Continuous 360° boom rotation upgrade
- Multiple auger flightings up to 48”
- Hook block options for multi-part line lifting
- Toolboxes and body-mounted hose reels/circuits for added utility
- Superlink shortjack outriggers
- Custom Paint Colors
- Additional Customization for Your Unique Application

SPECIFICATIONS

Crane Capacity

50,060 lbs @ 5’ load radius

Maximum Tip Height

107’ (152’ with optional 45’ jib)

Boom Length

95’ / 29 m

Powered Boom Sections

4

Boom Rotation

372° non-continuous (planetary swing drive)

Working Area

180° standard (360° optional)

Winch Bare Drum Pull

12,800 lbs / 5806 kg

Wire Rope

425’ of 9/16” rotation-resistant rope

Single Line Pull

9,060 lbs

Auger System

20,000 lb, 2-speed, 41’ digging radius

Auger Flighting Capacity

24”, 36”, 48”

Operator Controls

Dual stand-up stations with LMI display

Outrigger Type (Front)

A-Frame, 20’10” span

Outrigger Type (Rear)

Out-and-Down, 18’2” span

Overall Height

13’6” / 4,1 m

Crane Weight

29,785 lbs / 13 510 kg

Oil Tank Capacity

120 gallons

Chassis Requirement

192” C.A., 20,000 lb front axle, 40,000 lb GVWR

