

ELLIOTT



E150i

E-LINE AERIAL

Multi-Mode Versatility

Interchangeable boom configurations allow one machine to perform the work of multiple units, reducing fleet size, maintenance costs, and maximizing utilization.

Integrated Material Handling Capability

Telescopic platform mode supports 1,200 lb personnel and 1,500 lb material handling capacity, while the main boom delivers up to 27,000 lb lifting capacity for heavy-duty tasks.

STANDARD COMPONENTS

- Interchangeable Boom System (Telescopic & Articulating)
- 500kV Class A Insulating or Steel Boom Options
- Hydraulically Self-Leveling, Rotating Work Platform
- 27,000 lb Main Boom Material Handling Capacity
- Dynasmooth Radio Remote Controls
- EZ Crib Outriggers with Extended Vertical Stroke
- ANSI A92.2 Certified in All Operating Modes

Flexible Reach & Access

Articulating and telescopic boom modes provide up to 150' working height with 240° hyper-articulation, enabling crews to reach over, under, and around obstacles with fewer setups.

Precision Control & Operational Efficiency

Dynasmooth radio controls, ERFSD speed reduction, and rapid mode changeover provide smooth operation, improved safety, and reduced downtime between job configurations.

402.592.4500 | SALES@ELLIOTTEQUIP.COM | ELLIOTTEQUIP.COM



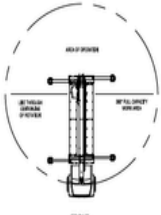


E150i

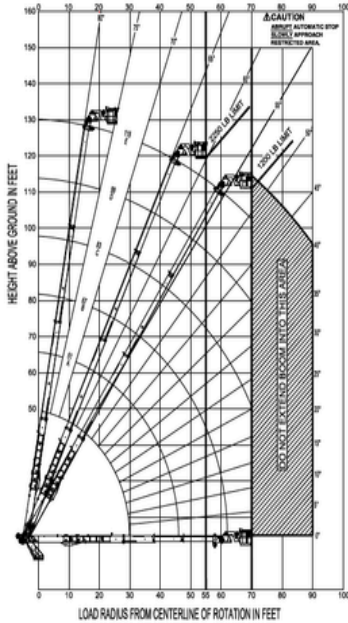
E-LINE AERIAL

BOOM RANGE DIAGRAM WITH PLATFORM ATTACHED TO MAIN BOOM

PLATFORM CAPACITY
1200 LBS MAX
PLATFORM JIB CAPACITY
1500 LBS MAX



USE OUTRIGGERS AT ALL TIMES.
MAX WIND SPEED ALLOWABLE 28 MPH.
DO NOT OPERATE IN WIND SPEEDS
ABOVE 28 MPH.



OPTIONS

- 500kV Insulated Boom Configurations
- Steel Boom Configurations
- Multiple Platform Configurations
- Material Handling Jib & Winch Configurations
- Additional Tooling & Hydraulic Accessories
- Custom Storage & Bed Configurations

VIDEO:



FULL SPECS:



SPECIFICATIONS

Working Height – Articulating Mode

150' / 46 m

Working Height – Telescopic Mode

130' / 40 m

Platform Capacity – Articulating Mode

800 lb / 362 kg

Platform Capacity – Telescopic Mode

1,200 lb / 544 kg

Horizontal Reach

70' / 21 m

Main Boom Lifting Capacity

27,000 lb / 13,600 kg

Lifting Capacity – Telescopic Platform

1,500 lb / 680 kg

Outrigger Spread (Front & Rear)

21'2" / 6.4 m

Cab to Trunnion (CT)

204" / 518 cm

Minimum GVWR

78,500 lb / 28,350 kg

