

ELLIOTT

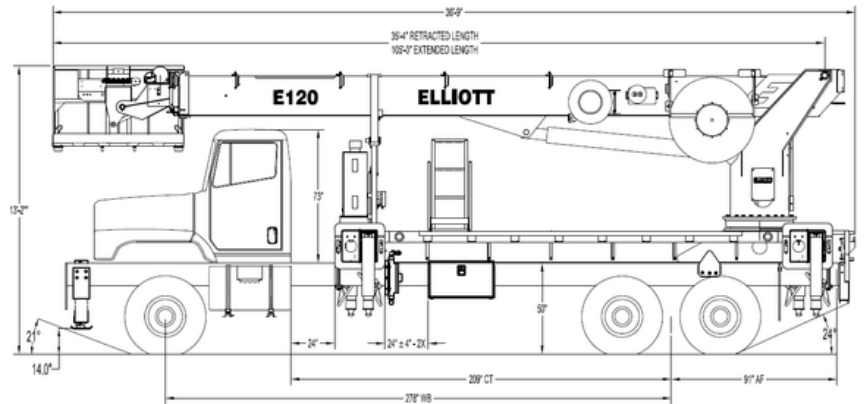


E120

E-LINE AERIAL

STANDARD FEATURES

- 4-Section Fully Proportional Boom
- End-Hung 34" x 72" Work Platform (600 lb Capacity)
- Wireless Radio Remote Platform Controls
- Hydraulic Platform Leveling System
- Continuous Rotation with Hydraulic Drive
- Out-and-Down Outriggers (20' Spread)
- Hydraulic Hose Reel & Electric Lines to Platform
- Closed-Center Hydraulic System
- Full-Length Welded Subframe
- ANSI A92.2 Certified



Extended Reach with Compact Footprint

Delivers 120' working height and 80' side reach while maintaining maneuverability for tight jobsite conditions.

End-Hung Platform Efficiency

A 34" x 72" end-hung platform improves access around structures and provides a stable two-person work environment.

Precision Control & Operation

Wireless radio controls and proportional hydraulics provide smooth, responsive "point-and-shoot" positioning.

Job Versatility

Material handling jib and outrigger maneuverability allow effective operation across varied terrain and applications.

402.592.4500 | SALES@ELLIOTTEQUIP.COM | ELLIOTTEQUIP.COM



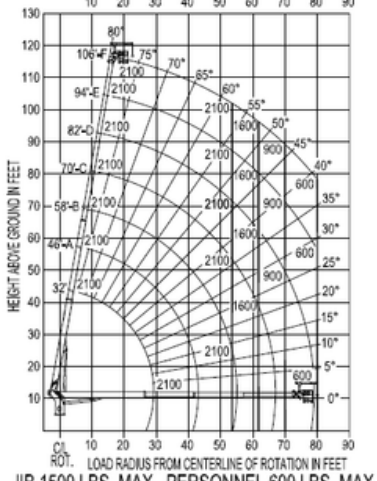


E120

E-LINE AERIAL

MAXIMUM WORKING LOADS PLATFORM JIB OPERATION MODEL E120

JIB WINCH LINE LOAD (POUNDS) WITH PLATFORM ATTACHED JIB
USE OUTRIGGERS AT ALL TIMES AVOID JERKING LOAD



OPTIONS

- 1,500 lb Platform Jib Winch
- 500kV Insulated Jib & Basket
- Rotating Open-Seated Controls
- 110V / 220V Line to Platform
- Deep-Penetration Outriggers
- 6x6 Chassis Mounting Configurations
- Climate-Specific Hydraulic Systems

FULL SPECS:



VIDEO:



SPECIFICATIONS

Working Height	120' / 36.6 m
Working Side Reach	80' / 24.4 m
Platform Capacity	600 lb / 272 kg
Platform Size	34" x 72" / 86 x 183 cm
Platform Type	End Hung
Jib Winch	1,500 lb / 680 kg
Powered Boom Sections	4
Overall Height	13'2" / 4.1 m
Unit Weight	28,500 lb / 12,927 kg
Outrigger Spread (Main)	20' / 6.1 m
Outrigger Spread (Auxiliary)	20' / 6.1 m

