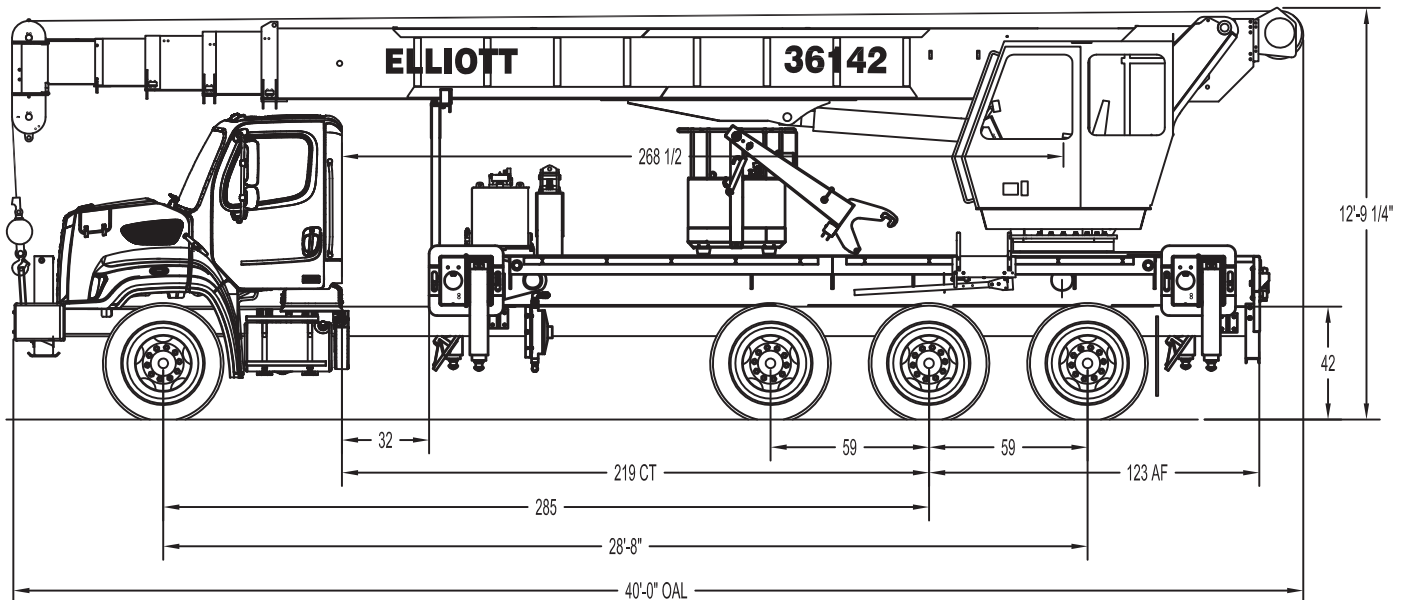


36142 SIDE VIEW DIAGRAM



- | | | | |
|----------------------------------|----------------------|---------------------------------------|------------------|
| • Maximum Vertical Reach | 201'61,3 m | • Powered Boom Sections | 5 |
| • Working Area | 360 Degrees | • Overall Height | 12'10"/3,9 m |
| • Lifting Capacity | 72,000 lbs/32 659 kg | • Operator Controls (Standard) | Rotating Standup |
| • Boom Length | 142'43,3 m | • Outrigger Type Front | Out-Down |
| • Crane Weight (Standard) | 35,210 lbs/15 971 kg | • Outrigger Spread Front | 21'2"/6,4 m |
| • Jib Lengths | 32'-49'/10-15 m | • Outrigger Type Rear | Out-Down |
| • Winch Bare Drum Pull | 12,800 lbs/5806 kg | • Outrigger Spread Rear | 21'2"/6,4 m |

TECHNICAL SPECIFICATIONS

Crane Capacity: 72,000 lbs at 5' load radius.

Maximum Tip Height: 152' height (201' with optional 32'-49' jib)

Control Console: Rotating turret single operator standup control station equipped with four single axis control levers for the main crane controls. Operator station includes LMI display, bubble level gauge, engine start/stop switch, signal horn button, variable speed throttle switch, lifting capacity chart, range diagram chart, boom angle indicator, system pressure gauge, 12V DC power source, and cup holder. Independent ground level electric operated outrigger controls.

Boom: Five-section fully proportional, high strength steel plated rectangular tube sections. A maximum boom tip height of 152' mounted on a truck. The boom nose contains one floating upper sheave and three lower sheaves. Assembly includes heavy-duty cylinder fittings, pivot pins, and replaceable wear pads.

Winch: Mounted at the base of the boom for a long fleet angle and flat level spooling of cable. Winch is driven by a planetary reducer and powered by a hydraulic motor. Burst-of-speed winch provides increased line speed. The winch brake is spring applied, pressure release design. Supplied with 425' of 9/16" diameter rotation resistant wire rope with a single line pull of 9,060 pounds, and a downhaul ball with swivel hook for single part line.

Load Moment Indicator System: System senses hoist cylinder pressures, boom length and boom angle with hydraulic function lockout. The display console is equipped with a bar graph showing crane utilization, boom angle or boom length, a mode select controls for main boom and jib operation, and an anti-two block with an audio/visual warning and shut-off functions to limit

hook-boom point contact.

Outriggers: Two sets of out and down overframe outriggers with 21'2" span. Outriggers are configured for full span or mid span operation. Outriggers equipped with ball socket aluminum removable pads that stow on vertical outrigger legs. Single front bumper stabilizer.

Frame: Full length, all welded rigid 4-plate design sub-frame. Sub-frame allows for bolt-on addition of 20' aluminum bed wings, with top plate of subbase serving as a portion of the bed deck, to form a three-piece bed.

Turret: Reverse offset turret is one-piece weldment. Turret rotates on large diameter ball bearing.

Rotation: Hydraulic motor drives turret through double reduction planetary swing drive for continuous rotation. The swing drive system has a spring applied, pressure release brake.

Lift: One double-acting long stroke cylinder provides smooth and stable boom elevation. Holding valve prevents boom from falling in event of hose failure.

Boom Extension: Incorporates a 2-stage hydraulic extension cylinder, attached to the largest boom section, with a proportional cable extension system driving the outermost sections.

Hoses: All high pressure hoses are wire braid reinforced with a minimum safety factor of 4 to 1.

Cylinders: All cylinders use microhoned cylinder tubing, chrome shafts, top grade packing and protective rod wipers. Cylinder-mounted holding valves provided on all load-holding cylinders.

Hydraulic System: Equipped with air-shift or hot shift PTO, piston pump, SAE O-ring face seals on pressure lines, and a 10-micron return line filter. The control valve distributes all flow to hoist

system, swing circuit, and other crane functions. System is closed center type.

Oil Tank Capacity: 119 gallon aluminum reservoir mounted on outrigger or truck frame.

Cab Equipment: PTO with indicator lights installed in truck cab. U/L approved 5:BC dry chemical fire extinguisher installed in truck cab.

Operators Manual & Video: Two CD copies and one hard copy of operation, maintenance, safety and parts manual provided with each unit. Operational and safety video provided at delivery.

Installation: Unit installed on chassis, painted, system and tank filled with oil, tested, inspected, and ready to operate.

Standard Paint: Paint turret and boom white, outriggers red, and boxes black.

Bumper: Bureau of Motor Carrier Safety rear bumper.

Weight: Approximately 35,210 lbs. with 20' bed wings less truck.

Truck Chassis Required: Approx. 219" C.T., 3,200,000 in-lb RBM frame rails, 20,000 lb. front axle and 78,000 lb. GVWR recommended. Truck must have a front frame extension, 12V electrical system with high capacity alternator, cab clearance stop/tail/backup lights, and I.D. lamps. Contact factory when additional equipment is to be added.

Options:

Enclosed Operator Cab with Heater
Open Seated Rotating Control Station
32' to 49' Two-Piece Telescopic Jib
Radio Remote Controls
Gravity-Leveled Steel Basket
Line Blocks for Multi-Part Line
Hydraulic Oil Cooler
Toolbox Storage Options
Much more....

Elliott Equipment Company reserves the right to change the specification of any unit at any time without prior notice. This brochure is only a statement of general specifications on the date of this publication. For more detailed info on specific Elliott trucks go to www.elliottequip.com

LOAD CHART - MAIN BOOM, FULL-SPAN OUTRIGGERS



MODEL 3600 142-ft BOOM
LOAD RATINGS WITH FULLY EXTENDED OUTRIGGERS

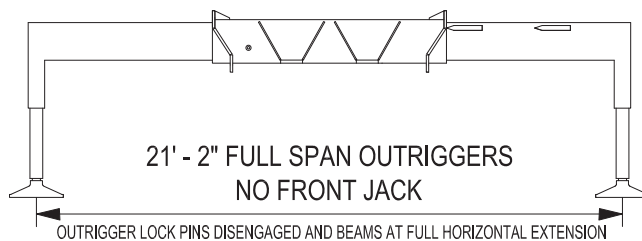
MAIN BOOM LOAD RATINGS (LBS)

LOAD RADIUS IN FEET	LOADED BOOM ANGLE	35-FT	A	LOADED BOOM ANGLE	47-FT	B	LOADED BOOM ANGLE	61-FT	C	LOADED BOOM ANGLE	74-FT	D	LOADED BOOM ANGLE	88-FT	E	LOADED BOOM ANGLE	101-FT	F	LOADED BOOM ANGLE	115-FT	G	LOADED BOOM ANGLE	128-FT	H	LOADED BOOM ANGLE	142-FT
5	71.7	72,000																								
8	68.2	48,000																								
10	64.6	41,000	71.4	40,000																						
12	60.9	35,900	68.8	34,000	73.8	30,000																				
15	55.2	28,000	64.8	26,500	70.9	24,500	74.3	24,000																		
20	44.4	20,000	57.9	20,000	65.8	20,000	70.3	17,500	73.5	17,000																
25	31.0	15,000	50.3	15,500	60.5	15,500	66.1	15,000	70.1	14,500	72.7	13,200	74.9	12,000												
30			41.9	12,000	55.0	12,000	61.8	12,400	66.6	12,400	69.7	11,300	72.3	10,500	74.1	8,500										
35			31.7	9,400	49.0	9,700	57.3	10,200	63.0	10,200	66.7	9,400	69.6	9,500	71.8	8,200	73.6	6,000								
40			16.8	7,200	42.5	8,000	52.5	8,400	59.2	8,400	63.5	8,200	67.0	8,300	69.4	7,700	71.5	5,700								
45					34.9	6,500	47.5	6,800	55.4	6,800	60.7	7,000	64.2	7,200	67.0	6,600	69.4	5,500								
50					25.6	5,100	42.0	5,500	51.3	5,500	57.0	5,500	61.4	5,600	64.6	5,600	67.2	5,200								
55					10.4	4,400	35.8	4,500	47.0	4,600	53.6	4,600	58.6	4,700	62.0	4,700	65.0	4,400								
60							28.6	3,600	42.4	3,700	49.9	3,700	55.6	3,800	59.5	3,800	62.8	3,600								
65							18.9	2,800	37.3	3,000	46.1	3,000	52.5	3,100	56.8	3,100	60.5	3,000								
70									31.5	2,200	42.0	2,200	49.3	2,400	54.1	2,400	58.1	2,200								
75									24.6	1,500	37.6	1,600	45.9	1,700	51.3	1,700	55.7	1,700								
80									15.0	800	32.7	1,150	42.3	1,150	48.4	1,200	53.2	1,250								
85											27.0	800	38.5	800	45.3	850	50.7	850								
90															42.1	600	48.0	600								
95																										
	0	11,500	0	6,500	0	4,000	0	1,300																		
		900		650		500		400		350		300		250		250		200								

JIB LOAD RATINGS

(LBS)		
32-49 FT EXTENDABLE JIB		
LOAD RADIUS (FT)	LOADED BOOM ANGLE	32 FT JIB RETRACTED
33	80.0	3,400
44	75.0	3,200
58	70.0	2,700
70	65.0	1,500
80	62.0	1,000
49-FT JIB EXTENDED		
LOAD RADIUS (FT)	LOADED BOOM ANGLE	49-FT JIB EXTENDED
35	80.0	2,200
50	75.0	2,200
70	70.0	1,600
80	65.0	1,000

DEDUCTIONS FOR STOWED EXTENDABLE JIB (LBS)



ELLIOTT EQUIPMENT CO. SUPPLIED LOADLINE EQUIPMENT DEDUCTIONS:
 DOWNHAUL WEIGHT180 LBS
 ONE SHEAVE BLOCK.....236 LBS
 TWO SHEAVE BLOCK.....291 LBS
 THREE SHEAVE BLOCK.....639 LBS
 FOUR SHEAVE BLOCK.....762 LBS
 AUXILIARY SHEAVE.....100 LBS

1-PART LINE	2-PART LINE	3-PART LINE	4-PART LINE	5-PART LINE	6-PART LINE	7-PART LINE	8-PART LINE
MAX PULL: 9,600 lbs	19,200 lbs	28,800 lbs	38,400 lbs	48,000 lbs	57,600 lbs	67,200 lbs	72,000 lbs
MAX PULL: 9,060 lbs	18,120 lbs	27,180 lbs	36,240 lbs	45,300 lbs	54,360 lbs	63,420 lbs	72,000 lbs

NOTICE
 - DO NOT DEADHEAD LINE BLOCK AGAINST BOOM TIP WHEN EXTENDING BOOM.
 - KEEP AT LEAST 5 WRAPS OF LOADLINE ON THE WINCH DRUM AT ALL TIMES.
 - USE ONLY 9/16" DIAMETER WIRE ROPE, AS SPECIFIED BELOW, WITH THE PROPER BREAKING STRENGTHS LISTED.
 - ANTI-TWO-BLOCK SYSTEM MUST BE IN GOOD OPERATING CONDITION BEFORE OPERATING CRANE. SEE OPERATION & SAFETY MANUAL.
 9/16" - 6 x 37 IWRC (3.5:1 S.F.) 33,600-lbs. BREAKING STRENGTH
 9/16" - SPIN RESISTANT (5:1 S.F.) 45,300-lbs. BREAKING STRENGTH
 1214820 072216

CRANE MEETS ASME B30.5 REQUIREMENTS AT TIME OF MANUFACTURE



Elliott Equipment Company
 3514 South 25th Street
 Omaha, NE 68105
 Phone: 402-592-4500
 Fax: 402-592-4553
 Email: sales@elliottequip.com

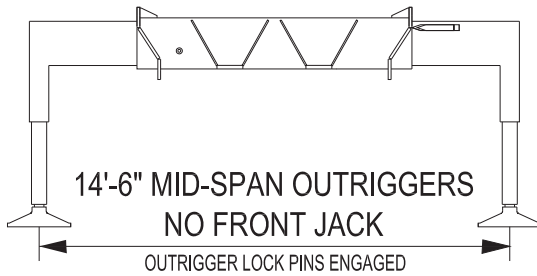
Built for You.
 www.elliottequip.com

LOAD CHART - MAIN BOOM, MID-SPAN OUTRIGGERS



MODEL 3600 142-FT BOOM
LOAD RATINGS WITH OUTRIGGERS AT MID-SPAN POSITION

MAIN BOOM LOAD RATINGS (LBS)														JIB LOAD RATINGS							
LOAD RADIUS IN FEET	LOADED BOOM ANGLE	35-FT	LOADED BOOM ANGLE	A 47-FT	LOADED BOOM ANGLE	B 61-FT	LOADED BOOM ANGLE	C 74-FT	LOADED BOOM ANGLE	D 88-FT	LOADED BOOM ANGLE	E 101-FT	LOADED BOOM ANGLE	F 115-FT	LOADED BOOM ANGLE	G 128-FT	LOADED BOOM ANGLE	H 142-FT	(LBS)		
5	71.7	72,000																	32-49 FT EXTENDABLE JIB		
8	68.2	48,000																	LOAD RADIUS (FT)	LOADED BOOM ANGLE	32 FT JIB RETRACTED
10	64.6	41,000	71.4	40,000														33	80.0	3,400	
12	60.9	35,900	68.8	34,000	73.8	30,000												44	75.0	3,200	
15	55.2	28,000	64.8	26,500	70.9	24,500	74.3	24,000													
20	44.4	18,000	57.9	18,800	65.8	19,000	70.3	17,500	73.5	17,000											
25	31.0	11,000	50.3	11,800	60.5	12,000	66.1	12,300	70.1	12,500	72.7	12,900	74.9	12,000							
30			41.9	7,800	55.0	8,100	61.8	8,400	66.6	8,600	69.7	8,800	72.3	8,900	74.1	8,500					
35			31.7	5,200	49.0	5,600	57.3	5,800	63.0	6,000	66.7	6,200	69.6	6,300	71.8	6,400	73.6	6,000			
40			16.8	3,500	42.5	3,800	52.5	4,000	59.2	4,200	63.5	4,400	67.0	4,500	69.4	4,500	71.5	4,500			
45					34.9	2,500	47.5	2,700	55.4	2,800	60.7	3,000	64.2	3,100	67.0	3,200	69.4	3,300			
50					25.6	1,500	42.0	1,700	51.3	1,800	57.0	2,000	61.4	2,200	64.6	2,200	67.2	2,300			
55					10.4	700	35.8	900	47.0	1,000	53.6	1,200	58.6	1,300	62.0	1,400	65.0	1,400			
60											49.9	600	55.6	600	59.5	700	62.8	700			
65																					
70																					
75																					
80																					
85																					
90																					
95																					
	0	7,100	0	3,000	0	600	0														
		900		650		500		400		350		300		250		250		200	DEDUCTIONS FOR STOWED EXTENDABLE JIB (LBS)		



- ELLIOTT EQUIPMENT CO. SUPPLIED LOADLINE EQUIPMENT DEDUCTIONS:**
- DOWNHAUL WEIGHT180 LBS
 - ONE SHEAVE BLOCK.....236 LBS
 - TWO SHEAVE BLOCK.....291 LBS
 - THREE SHEAVE BLOCK.....639 LBS
 - FOUR SHEAVE BLOCK.....762 LBS
 - AUXILIARY SHEAVE.....100 LBS

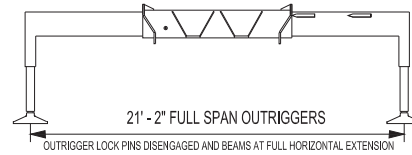
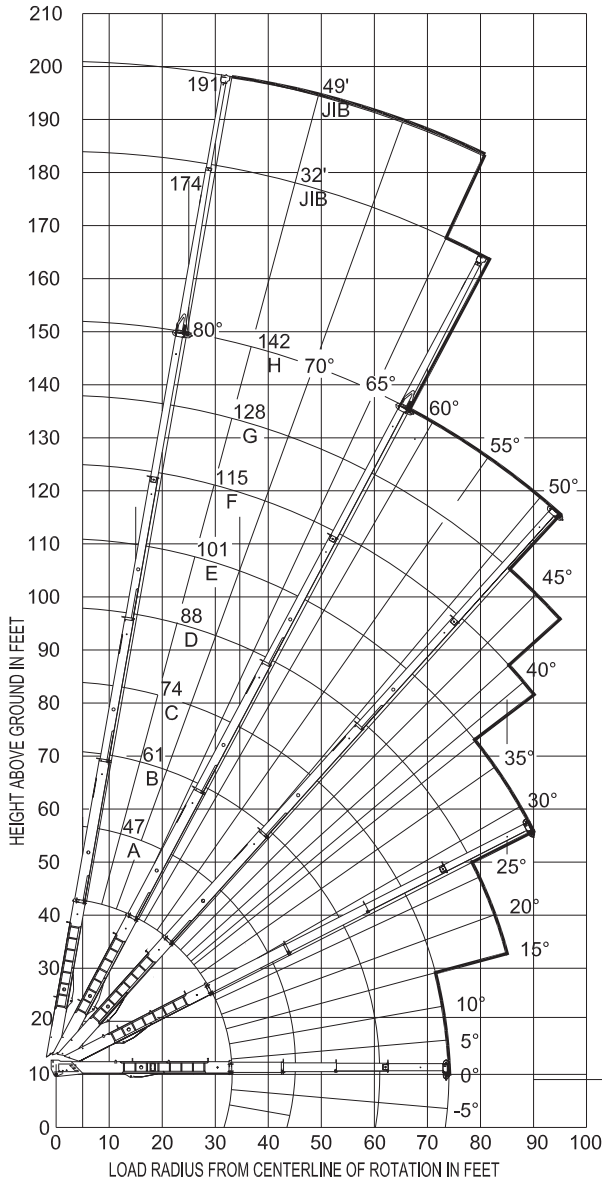
1-PART LINE	2-PART LINE	3-PART LINE	4-PART LINE	5-PART LINE	6-PART LINE	7-PART LINE	8-PART LINE	NOTICE
								<ul style="list-style-type: none"> • DO NOT DEADHEAD LINE BLOCK AGAINST BOOM TIP WHEN EXTENDING BOOM. • KEEP AT LEAST 5 WRAPS OF LOADLINE ON THE WINCH DRUM AT ALL TIMES. • USE ONLY 9/16" DIAMETER WIRE ROPE, AS SPECIFIED BELOW, WITH THE PROPER BREAKING STRENGTHS LISTED. • ANTI-TWO-BLOCK SYSTEM MUST BE IN GOOD OPERATING CONDITION BEFORE OPERATING CRANE. SEE OPERATION & SAFETY MANUAL.
MAX PULL: 9,600 lbs	19,200 lbs	28,800 lbs	38,400 lbs	48,000 lbs	57,600 lbs	67,200 lbs	72,000 lbs	9/16" - 6 x 37 IWRC (3.5:1 S.F.) 33,600-lbs. BREAKING STRENGTH
MAX PULL: 9,060 lbs	18,120 lbs	27,180 lbs	36,240 lbs	45,300 lbs	54,360 lbs	63,420 lbs	72,000 lbs	9/16" - SPIN RESISTANT (5:1 S.F.) 45,300-lbs. BREAKING STRENGTH
CRANE MEETS ASME B30.5 REQUIREMENTS AT TIME OF MANUFACTURE								1214820 072216

RANGE CHART - MAIN BOOM + JIB, FULL-SPAN OUTRIGGERS



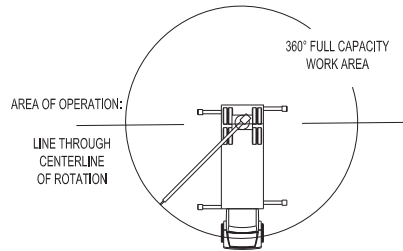
MODEL 3600 142-FT BOOM

RANGE DIAGRAM WITH FULL SPAN OUTRIGGERS



NOTE:

1. Operate jib by radius when main boom is fully extended. Increase boom angle if necessary to maintain load radius.
2. When boom is retracted, operate jib by boom angles. Do not exceed any rated jib capacities at reduced boom lengths.
3. Capacities do not exceed 85% stability.
4. Load ratings above bold line are structurally limited.
5. Personnel handling is allowed only with full span outriggers.
6. Boom load ratings are based on loaded boom radius. Loaded boom angles are given as reference only.



STABILITY LIMIT LINE (NO LOAD)

BOOM DEFLECTION NOT SHOWN

CRANE MEETS ASME B30.5 REQUIREMENTS AT TIME OF MANUFACTURE

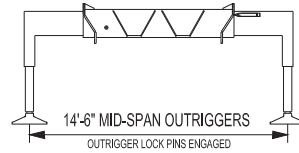
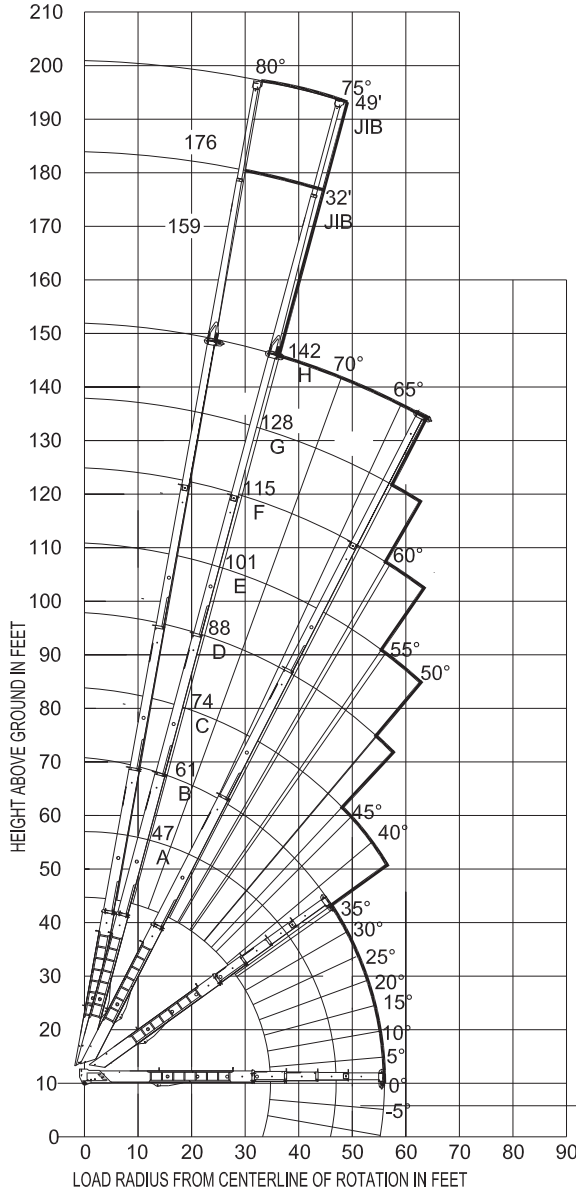
1214820 072216

RANGE CHART - MAIN BOOM + JIB, MID-SPAN OUTRIGGERS



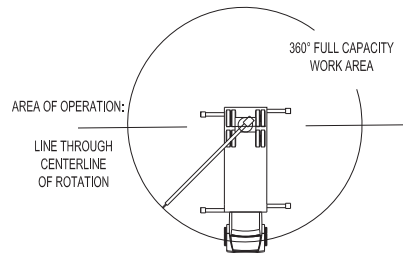
MODEL 3600 142-FT BOOM

RANGE DIAGRAM WITH OUTRIGGERS IN MID-SPAN POSITION



NOTE:

- Operate jib by radius when main boom is fully extended. Increase boom angle if necessary to maintain load radius.
- When boom is retracted, operate jib by boom angles. Do not exceed any rated jib capacities at reduced boom lengths.
- Capacities do not exceed 85% stability.
- Load ratings above bold line are structurally limited.
- Personnel handling is allowed only with full span outriggers.
- Boom load ratings are based on loaded boom radius. Loaded boom angles are given as reference only.



STABILITY LIMIT LINE (NO LOAD)

BOOM DEFLECTION NOT SHOWN

CRANE MEETS ASME B30.5 REQUIREMENTS AT TIME OF MANUFACTURE

1214820 072216

RECOMMENDED CHASSIS SPECIFICATIONS

	36142 BoomTruck
Wheelbase (WB)	285" / 724 cm
Cab to Axle (CA)	219" / 556 cm
Cab to End of Frame (EOF)	344" / 874 cm
Frame Section Modulus	30.0 in ³ -110,000 psi / 492 cm ³ -758 MPa
Front Axle Gross Weight Rating	20,000 lb / 9072 kg
Rear Axle Gross Weight Rating	58,000 lb / 26 308 kg
Integral Front Frame Rails	Required for Front Stabilizer

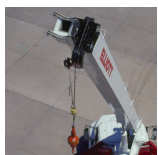
Chassis data shows minimum general requirements-not for engineering.
 Actual dimensions and truck data will depend on truck selection and axle configuration.
 *Minimum chassis weights are required to meet 85% stability requirements.

OPTIONS



Radio Remote Control

Interference protected radio remotes let you get closer to your work and have full control over your machine. Includes battery charging feature and optional LMI screen.



Pin-On Jib Attachments

Two-piece telescoping jib with material handling and basket attachment capabilities. Stows on the side of the boom for transport to the jobsite.



Hydraulic Oil Cooler

Add a hydraulic oil cooler to assist with high duty cycle job applications. Cooler activates automatically if the hydraulic oil temperature reaches a critical level.



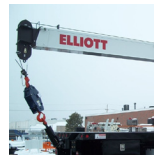
Automatic Safety Rotation Lockout

“Short-jack” your BoomTruck by adding an automatic safety lockout to prevent boom movement over the side where outriggers are not fully extended.



Operator Cab

The enclosed steel operator cab includes an adjustable seat, windshield wipers, diesel heater, fan, and optional air conditioning.



Hook Block for Multi-Part Line

Choose from a range of available hook blocks for working with up to 8 parts of line. The block can be stored towards the front of the bed.



2-Man Yoke Work Platform

Elliott’s 600 lb capacity 2-man platform features a hydraulic yoke lifting system for easy attachment to the boom or jib tip. Fully OSHA compliant and heavy duty.



Body Mounted Hose Reels and Circuits

Let us work with you to customize your tool compatibility by adding hose reels or hydraulic circuits to the crane bed.