

ELLIOTT



STANDARD FEATURES

- 65' working height, 59' working side reach on 25,999 lb. on non-CDL chassis
- Up to 3,300 lbs. of toolbox capacity
- 600 lb. platform capacity
- 160-degree platform rotation
- User choice of single-stick or four-stick remote controls
- Short-jack capability with one side vertical outrigger deployment for work in confined spaces
- Lifetime Structural Warranty
- Certified to ANSI A92.2

L65

HIREACH AERIAL

High-Performance Hydraulics

Advanced, high-performance hydraulics deliver precise, smooth operation with continuous rotation and both pressure and return filtration. Designed with 33% fewer hydraulic fittings to minimize potential leak points and enhance reliability.

Office in the Sky Accessories

Conveniently located in the work platform, features include 110V power, welder, oxy/acetylene, hydraulic tool, and pressure washer outlets, along with other accessible connections.

Choice of Four Stick or Single Stick Controls

Your choice of four stick or single stick proportional remote controls with hi/low range and hi/low engine speed for smooth operation in tight spaces. Four stick lower remote controls provide consistent operation. Automatic function slowdown approaching limits during short jack operation. USB charger at upper controls.

Bluetooth Remote Diagnostics

Enhances serviceability and minimizes downtime by delivering real-time feedback directly to the operator.

402.592.4500 | SALES@ELLIOTTEQUIP.COM | ELLIOTTEQUIP.COM



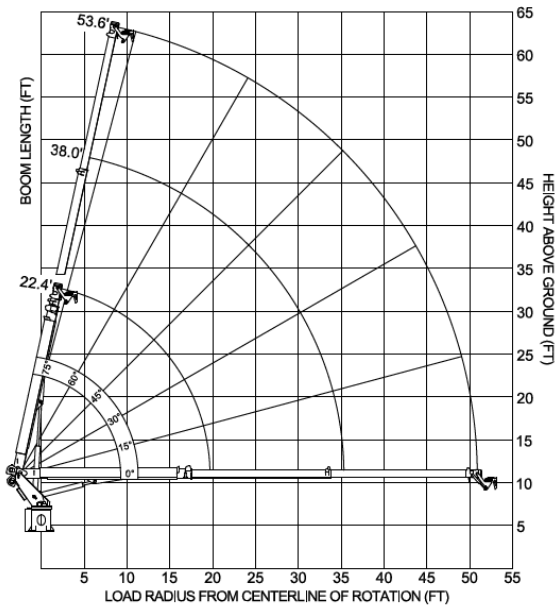


L65

HIREACH AERIAL

MAIN BOOM LOAD RATINGS WITH PLATFORM REMOVED*

*DEDUCT 500 LBS WITH PLATFORM ATTACHED



OPTIONS

- 500 lb. Capacity Stow & Go Jib Winch in Platform
- 5,900 or 2,000 lb Capacity Main Boom Winch
- Office in the Sky Accessories – 110V, welder, oxy/ acetylene, hydraulic tools, pressure washer and more
- Sign Forks on Work Platform
- Walkway Access to Platform
- Steel or Aluminum Toolboxes
- Steel, Wood or Aluminum Flatbed
- Composite or Wooden Outrigger Pads
- Platform Work Lighting
- Rear Back Up Camera
- Warning Lighting
- Overcab Protection
- Convenience Bundle
- Custom Paint Colors
- And more additional options & configurations – contact factory or dealer

VIDEO:



FULL SPECS:



SPECIFICATIONS

Working Height	65' / 19,8 m
Working Side Reach	59' / 17,9 m
Platform Capacity	600 lb / 272 kg
Main Winch Capacity	5,900 lb/2676 kg
Jib Winch Capacity	500 lb/227 kg
Front Outrigger Spread	12'/3,7 m
Rear Outrigger Spread	17'/5,2 m
Minimum GVWR	25,999 lb /11793kg

402.592.4500 | SALES@ELLIOTTEQUIP.COM | ELLIOTTEQUIP.COM

