

ELLIOTT



L50

HIREACH AERIAL

High-Performance Hydraulics

Advanced, high-performance hydraulics deliver precise, smooth operation with continuous rotation and both pressure and return filtration. Designed with 33% fewer hydraulic fittings to minimize potential leak points and enhance reliability.

Office in the Sky Accessories

Conveniently located in the work platform, features include 110V power, welder, oxy/acetylene, hydraulic tool, and pressure washer outlets, along with other accessible connections.

STANDARD FEATURES

- 50' working height, 40' working side reach on 19,500 lb. non-CDL chassis
- Full hydraulic boom extension
- 360° continuous rotation with industry-leading side reach
- Electric/hydraulic proportional upper controls
- Full-length subframe with hydraulic "A" frame outriggers
- EZR removable 40" x 60" steel platform with skid-resistant floor
- Oversized cable carrier for hydraulic, electric, welding, and air lines
- Lifetime Structural Warranty
- Certified to ANSI A92.2

Choice of Four Stick or Single Stick Controls

Your choice of four stick or single stick proportional platform controls with hi/low range and hi/low engine speed for smooth operation in tight spaces. Four stick lower controls provide consistent operation. Automatic function slowdown approaching limits during short jack operation. USB charger at upper controls.

Bluetooth Remote Diagnostics

Enhances serviceability and minimizes downtime by delivering real-time feedback directly to the operator.

402.592.4500 | SALES@ELLIOTTEQUIP.COM | ELLIOTTEQUIP.COM

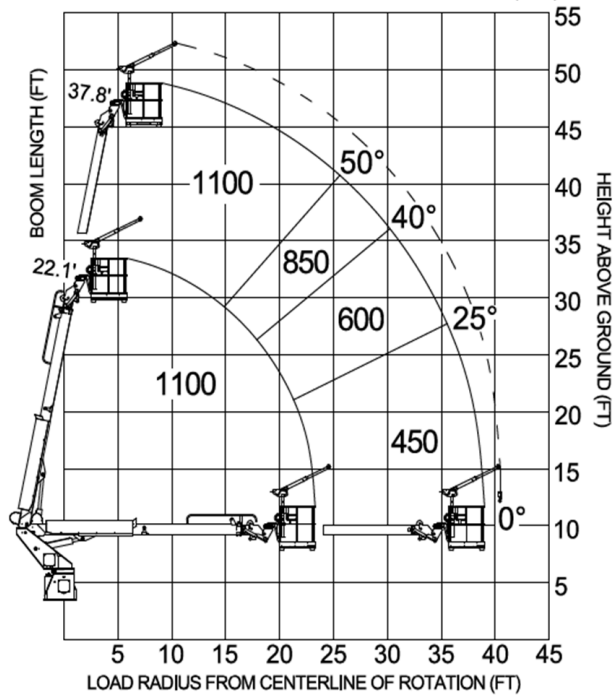




L50

HIREACH AERIAL

TOTAL COMBINED PLATFORM CAPACITY DIAGRAM (LBS)



OPTIONS

- Main winch with platform-on/off lifting capability
- 500 lb. Capacity Stow & Go Jib Winch in Platform
- 2,000 lb Capacity Main Boom Winch
- Office in the Sky Accessories – 110V, welder, oxy/acetylene, hydraulic tools, pressure washer and more
- Sign Forks on Work Platform
- Walkway Access to Platform
- Steel or Aluminum Toolboxes
- Steel, Wood or Aluminum Flatbed
- Composite or Wooden Outrigger Pads
- Platform Work Lighting
- Rear Back Up Camera
- Warning Lighting
- Overcab Protection
- Convenience Bundle
- Custom Paint Colors
- And more additional options & configurations – contact factory or dealer

VIDEO:



FULL SPECS:



SPECIFICATIONS

Working Height	50' / 15,2 m
Working Side Reach	40' / 12,2 m
Platform Capacity	600 lb / 272 kg
Platform Size	40" x 60" / 102 x 152 cm
Main Winch Capacity	2,000 lb / 907 kg
Jib Winch Capacity	500 lb / 227 kg
Front Outrigger Spread	10' / 3 m
Rear Outrigger Spread	10' / 3 m
Minimum GVWR	19,500 lb / 8845 kg

402.592.4500 | SALES@ELLIOTTEQUIP.COM | ELLIOTTEQUIP.COM

