

ELLIOTT



STANDARD FEATURES

- Hydraulically Powered Continuous Rotation
- Oil/Oil Hydraulic Control System
- Dual Out and Down Overframe Outriggers (20' span)
- 50,000 lbs Max Lifting Capacity
- High Pinpoint Boom Geometry
- Fully-Rotating Operator Station
- Front-Entry, Fully-Rotating Operator's Station
- Lifetime Structural Warranty
- ANSI A10.31 Compliant

D105

DIGGER DERRICK

Heavy-Duty Performance

Delivers a maximum lifting capacity of 50,000 lbs with a 12,000-lb line pull, plus a class-leading 41 ft. digging radius and 20,000 ft-lbs of digging torque to tackle demanding jobs with ease.

Versatile Outriggers

Two sets of out-and-down overframe outriggers with a 20' span, configurable for full-span or mid-span operation. Equipped with ball socket aluminum removable pads that stow neatly on the vertical outrigger legs.

Operator-Focused Control Station

Easy-access, front-entry control station with a fully rotating, ergonomic operator seat offers excellent visibility to the work area for improved efficiency and safety.

Integrated Hydraulic & Control System

Features a hydraulically powered continuous rotation mechanism driven by a piston pump, closed-center system design, and a 10-micron return line filter. Oil/oil hydraulic controls use five single-axis levers for precise boom and digger operation, ensuring smooth, responsive performance.

402.592.4500 | SALES@ELLIOTTEQUIP.COM | ELLIOTTEQUIP.COM





D105

DIGGER DERRICK

MAIN BOOM LOAD RATINGS WITH FULLY EXTENDED OUTRIGGERS

MAIN BOOM LOAD RATINGS

LOAD RATINGS IN LBS WITH OUTRIGGERS AND STABILIZERS EXTENDED

LOAD HOLDING FEET	LOADED BOOM ANGLE	28ft	LOADED BOOM ANGLE	A 43-ft	LOADED BOOM ANGLE	B 56-ft	LOADED BOOM ANGLE	C 69-ft	LOADED BOOM ANGLE	D 82-ft	LOADED BOOM ANGLE	E 95-ft
5	79.5	50,000										
8	72.5	40,000	79.5	17,000								
10	68.0	30,000	75.8	16,800								
12	63.0	29,000	72.9	16,600	78.5	17,500						
14	58.0	26,700	71.0	16,400	74.9	17,000	79.5	17,000				
16	53.0	22,800	67.1	16,200	72.7	16,500	76.1	16,500				
20	40.5	18,700	62.0	16,000	68.3	16,000	74.5	16,000	77.5	12,000	79.0	10,300
25	10.5	13,500	53.5	14,600	64.0	14,300	70.0	14,000	74.0	12,000	76.5	10,100
30			43.5	11,300	57.5	11,400	65.0	11,300	70.5	11,300	73.5	9,000
35			32.5	8,200	51.0	9,300	60.0	9,300	66.5	9,200	70.5	8,000
40			7.0	7,200	44.0	6,700	55.5	6,700	62.5	7,800	67.0	6,900
45					35.0	4,100	49.5	4,200	58.0	5,200	64.0	5,000
50					22.5	3,200	43.5	3,400	53.5	3,200	59.5	3,200
55							36.5	2,700	48.5	2,700	56.0	2,800
60							27.5	2,100	42.2	2,200	52.0	2,300
65							13.0	1,500	37.0	1,800	47.5	1,800
70									30.5	1,400	43.0	1,400
75									21.0	1,000	38.0	1,100
80											32.0	800
85											25.0	600
90												
	0	9,000	0	5,500	0	2,800	0	1,500	0	700		

RANGE DIAGRAM WITH OUTRIGGERS

AT FULL SPAN POSITION

LOAD RADIUS FROM CENTERLINE OF ROTATION IN FEET

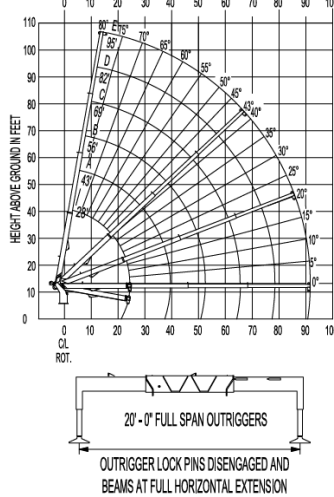
HEIGHT ABOVE GROUND IN FEET

LOAD RADIUS FROM CENTERLINE OF ROTATION IN FEET

CL. ROT.

20'-0" FULL SPAN OUTRIGGERS

OUTRIGGER LOCK PINS DISENGAGED AND BEAMS AT FULL HORIZONTAL EXTENSION



OPTIONS

- Automatic Rotation Lockout
- Auger Flighting (24", 36", 48")
- EZ-Crib Two-Stage Outriggers
- 600-lb capacity, gravity leveled, personnel platform
- 2-3 or 4-Part Hook Block
- Hose Reels / Hydraulic Circuits to Flatbed
- Custom Line Body & Flat Bed configurations
- Hydraulic Tank Heater
- And more additional options & configurations – contact factory or dealer



VIDEO:



FULL SPECS:



SPECIFICATIONS

Sheave Height (Maximum)	105'/32 m
Sheave Height (Retracted)	40'/12,2m
Digging Radius (Maximum)	41'/12,5 m
Digging Radius (Minimum)	24'/7,3 m
Lifting Capacity (Maximum)	50,000 lbs/22 679 kg
Lifting Capacity @ 10' Radius	30,000 lbs/13 608 kg
Lifting Capacity @ 33' Digging Radius	9,500 lbs/4 309 kg
Boom Elevation Limits	-8/+80 Degrees
Boom Rotation	360 Degrees Continuous
Digger Motor Torque	20,000 ft-lb/27 116 Nm
Digger Speed (High/Low)	80 RPM / 35 RPM

105'/32 m
40'/12,2m
41'/12,5 m
24'/7,3 m
50,000 lbs/22 679 kg
30,000 lbs/13 608 kg
9,500 lbs/4 309 kg
-8/+80 Degrees
360 Degrees Continuous
20,000 ft-lb/27 116 Nm
80 RPM / 35 RPM

402.592.4500 | SALES@ELLIOTTEQUIP.COM | ELLIOTTEQUIP.COM

