

ELLIOTT



STANDARD COMPONENTS

- 80,000 lb Maximum Capacity
- Five-Section High-Strength Steel Boom – 34'9" to 142'
- Up to 207' Tip Height with Optional Jib
- Base-Mounted Planetary Winch – 11,300 lb Single Line Pull
- Rotating Tilting Cab with Deluxe Heated Seat & AC
- Full LMI System with Anti-Two-Block & Load Sensing
- 360° Continuous Rotation – Planetary Swing Drive
- Outriggers – Front 21'2", Rear 26'2"
- Double-Acting Lift Cylinder & 2-Stage Extension System
- Closed-Center Hydraulic System with Oil Cooler
- Full-Length Welded 4-Plate Subframe
- ANSI B30.5 Compliant
- 2-year parts and labor warranty
- Lifetime Structural Warranty

40142

BOOMTRUCK

Heavy-Duty Lifting Power

80,000 lb capacity and up to 207' tip height with jib for high-reach lifting in demanding applications.

Enhanced Safety Systems

Full LMI with anti-two-block, load-sensing, and outrigger interlocks for safe crane operation.

Operator Comfort & Control

Rotating tilting cab with deluxe heated seat, AC, stereo, and intuitive pilot controls for precise operation.

Efficient Setup & Integration

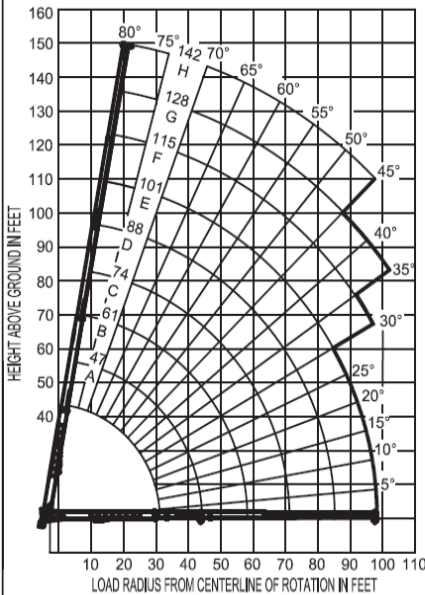
Long-reach outriggers, smooth planetary rotation, and burst-of-speed winch optimize productivity on the jobsite.

FULL SPECS:

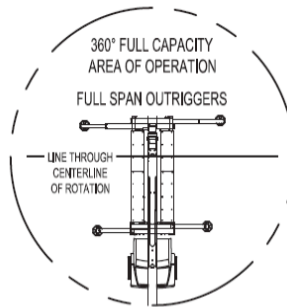
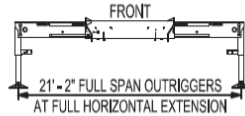
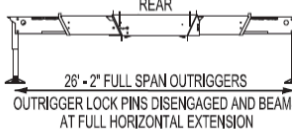


402.592.4500 | SALES@ELLIOTTEQUIP.COM | ELLIOTTEQUIP.COM

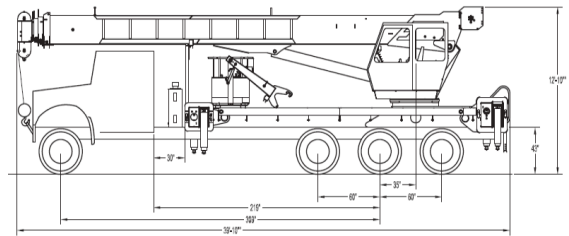


ELLIOTT**40142****BOOM TRUCK****RANGE DIAGRAM WITH FULL SPAN OUTRIGGERS**

CRANE MEETS ASME B30.5 REQUIREMENTS AT TIME OF MANUFACTURE

**OPTIONS**

- 31'-55' Two-Section Jib
- 36" x 72" gravity leveled platform, 1200 / 600 lbs. capacity
- Wireless Radio Remote Controls
- Auxiliary Winch Package
- Winch Drum Rotation Indicator
- Winch and Rear View Cameras
- And more additional options & configurations – contact factory or dealer

**SPECIFICATIONS****Maximum Vertical Reach**

207' / 63,1 m

Working Area

360 Degrees

Lifting Capacity

80,000 lbs / 36,287 kg

Boom Length

142' / 43,3 m

Crane Weight (Standard)

40,300 lbs / 18,280 kg

Jib Lengths

26', 31'-55' / 8 m, 9,4-16,8 m

Winch Bare Drum Pull

15,000 lbs / 6,804 kg

Powered Boom Sections

5

Overall Height

12'10" / 3,9 m

Operator Controls

Rotating Cab with Control Seat

Outrigger Type Front

Out-Down

Outrigger Spread Front

21'2" / 6,4 m

Outrigger Type Rear

Out-Down

Outrigger Spread Rear

26'2" / 8 m

402.592.4500 | SALES@ELLIOTTEQUIP.COM | ELLIOTTEQUIP.COM

