

ELLIOTT



V63F

HI REACH AERIAL

Telescopic Boom with Point-and-Shoot Functionality

Three-section boom design delivers smooth, efficient reach and operation.

Compact, Versatile Design

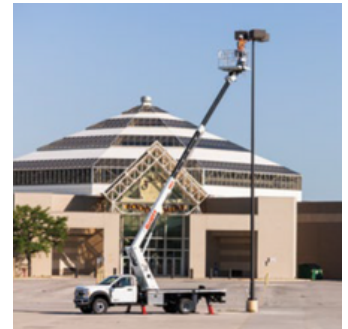
Fits on a 19,500 lb GVWR non-CDL chassis, maximizing jobsite access and storage space.

High-Capacity Boom Winch

Converts the HiReach into both an aerial work platform and a material handler with up to 1,000 lb lift.

STANDARD COMPONENTS

- 40" x 60" top-mounted steel work platform, electronically self-leveling and rotating with 180° rotation
- Upper controls available as 4 single-axis joysticks or 1 multi-axis joystick
- Hydraulically powered continuous rotation mechanism with holding valves on all cylinders
- 12V emergency hydraulic pump
- "A" type hydraulically powered front and rear outriggers with 9' spread and ground-level controls
- High-capacity boom winch (1,000 lb material handling or 500 lb jib in the platform)
- Certified to ANSI A92.2 for Vehicle-Mounted Elevating and Rotating Aerial Devices



SMART Control System

Provides touchscreen/manual button operation, precise control, Bluetooth service connectivity, and remote diagnostics.

Narrow Outrigger Spread

9 ft hydraulic outriggers provide full 360° stability, enabling setup in a single parking space.

402.592.4500 | SALES@ELLIOTTEQUIP.COM | ELLIOTTEQUIP.COM

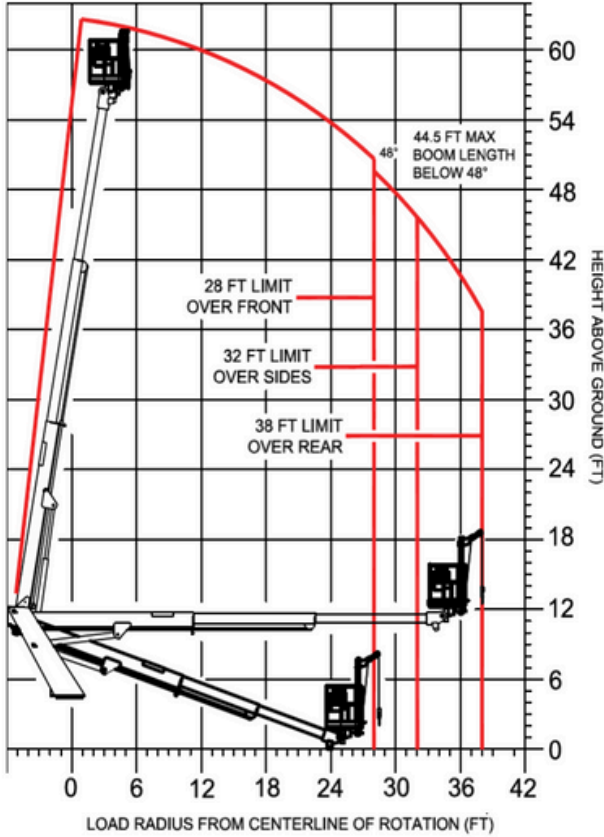




V63F

HIREACH AERIAL

AERIAL PLATFORM WORKING RANGE



OPTIONS

- 500 lb capacity stowable jib winch in the work platform
- 1,000 lb capacity main winch
- 110V line to the work platform
- Dual sign forks on work platform
- Cold-climate hydraulic oil heater
- Steel, wood, or aluminum flatbeds
- Steel, aluminum, or fiberglass service bodies
- Steel or aluminum toolboxes
- Composite or wooden outrigger pads
- Radio remote controls
- Custom paint colors
- Additional Customization for Your Unique Application

VIDEO:



FULL SPECS:



SPECIFICATIONS

Working Height	63' / 19,2 m
Working Side Reach	38' / 11,6 m
Platform Capacity	500 lb / 227 kg
Platform Size	40" x 60" / 102 x 152 cm
Main Winch Capacity	1,000 lb / 453 kg
Jib Winch Capacity	500 lb / 227 kg
Front Outrigger Spread	9' / 2,7 m
Rear Outrigger Spread	9' / 2,7 m
Minimum GVWR	19,500 lb / 8,845 kg

