

ELLIOTT



G85R

HIREACH AERIAL

Full Hydraulic Boom Extension

Provides smooth “point-and-shoot” functionality for efficient positioning.

Unrestricted Side Reach with 360° Stability

Delivers industry-leading access and safe operation at any angle.

Electric/Hydraulic Upper Controls

Ensures smooth, proportional, and precise operation even in tight spaces.

STANDARD COMPONENTS

- EZR Work Platform (40" x 60" steel with skid-resistant aluminum floor, removable for lifting loads with main winch and boom tip sheave)
- 2,000 lb Main Boom Winch (with or without platform attached)
- Oversized Cable Carrier (supports hydraulic, electric, welding, oxy/acetylene, and air lines)
- Electronic Proportional Three-Stick Remote Controls with hi/lo range and engine speed
- “A” Type Hydraulically Powered Outriggers (main and behind cab)
- Full-Length Subframe for stability and chassis life
- Elliott Lifetime Structural Warranty
- Certified to ANSI A92.2



Oversized Two-Person Steel Work Platform

EZR quick connect system with platform-stowed jib winch for added reach and reduced setup time.

Robust Structural Design

Heavy-duty subframe, turret, bearing, outriggers, and boom ensure a long service life and smooth ride.

402.592.4500 | SALES@ELLIOTTEQUIP.COM | ELLIOTTEQUIP.COM





G85R

HIREACH AERIAL

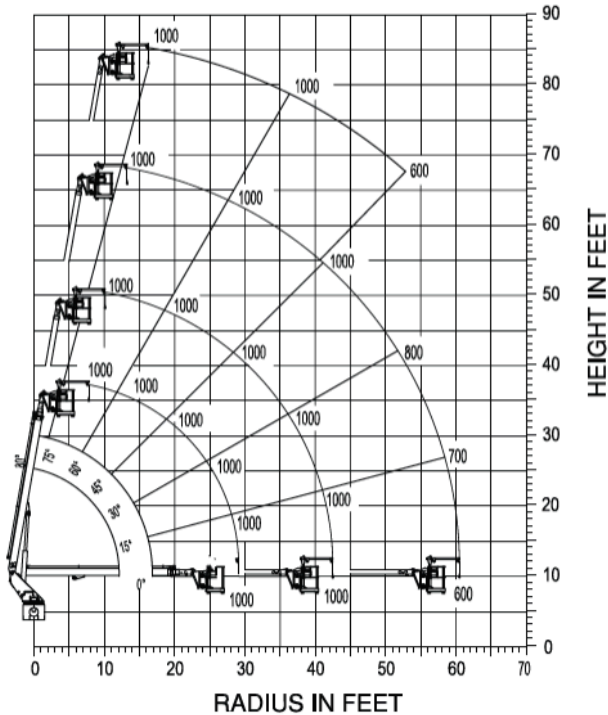
MAXIMUM WORKING LOADS

500 LBS. PLATFORM JIB OPERATION

MODEL G85

TOTAL PLATFORM CAPACITY (JIB LOAD PLUS PERSONNEL)

USE OUTRIGGERS AT ALL TIMES • AVOID JERKING LOAD
360° BOOM RADIUS



JIB 500 LBS. MAX. PERSONNEL 500 LBS. MAX.

OPTIONS

- Stow & Go Platform Jib Winch (500 lb capacity)
- 2,000 lb Main Boom Material Handling Winch
- Oversized Cable Carrier (hydraulic, electric, welding, oxy/acetylene, and air lines)
- EZR Work Platform (removable 40" x 60" steel platform with skid-resistant aluminum floor)
- Convenience Package (outrigger auto-leveling, boom auto-stow, Bluetooth remote diagnostics)
- Upper Controls (choice of three-stick or single-stick electronic proportional controls)
- Outrigger Configurations ("A" type hydraulically powered main and behind-cab outriggers)
- Custom Paint Colors
- And more additional options & configurations – contact factory or dealer

FULL SPECS:



SPECIFICATIONS

Working Height	87' / 26,5 m
Working Side Reach	61' / 18,6 m
Platform Capacity	500 lb / 227 kg
Main Winch Capacity	5,900 lb / 2676 kg
Jib Winch Capacity	500 lb / 227 kg
Front Outrigger Spread	12.5' / 3,8 m
Rear Outrigger Spread	18' / 5,5 m
Minimum GVWR	33,000 lb / 14,969 kg

