

# 1881TM BOOMTRUCK

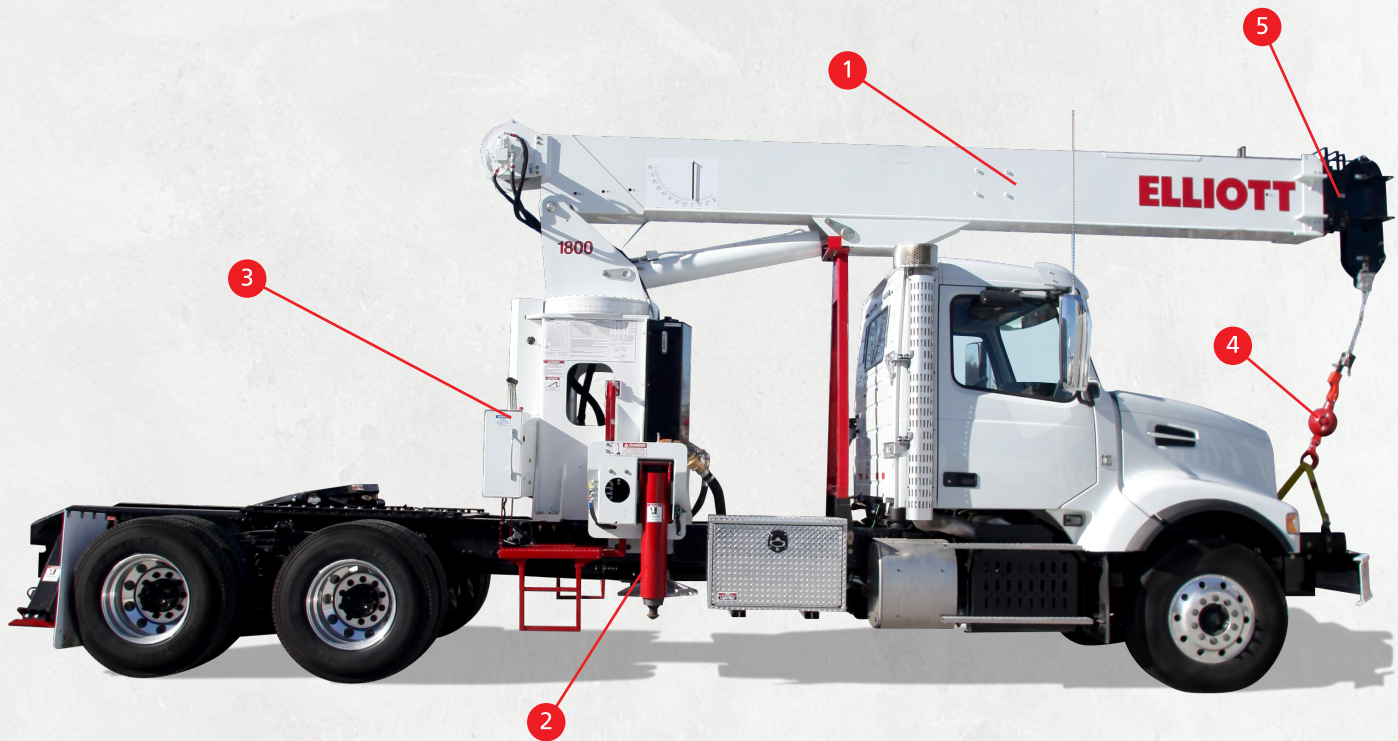


## KEY FEATURES

- 1 Proven 5-section boom is reliable and easy to maintain
- 2 Out-and-down outriggers with mid-span and optional short-jacking allow for setup in tight spaces and on uneven ground
- 3 Operator friendly controls with simple to use Hydraulic Load Limiter (HLL) overload protection system
- 4 Front bumper winch control makes teardown a snap
- 5 Radio anti two block eliminates wires and related service issues
- 6 Backed by a two-year parts and labor warranty and lifetime structural warranty

## TECHNICAL SPECS

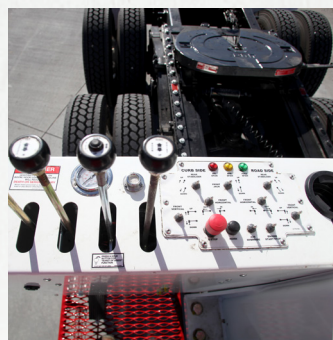
LIFTING CAPACITY	36,000 LBS / 16329 KG
BOOM LENGTH	81' / 24,7 M
BOOM SECTIONS	5
WINCH BARE DRUM PULL	12,800 LBS / 5806 KG
WINCH SINGLE LINE PULL	9,600 LBS / 4354 KG
OUTRIGGER TYPE FRONT	OUT-DOWN
OUTRIGGER TYPE REAR	"A" STAB



**Powerful, Two-Speed Winch**  
181 fpm 4th layer line speed and 288 fpm burst of speed for more work in less time.



**Redesigned Control Station**  
Electronic outrigger controls, electronic foot throttle, cup holder, and more.



**Full and Mid-Span Outriggers**  
New design makes changing outrigger spans easy and convenient.



**Weight Optimization**  
Engineered to maximize hauling capacity without requiring permits.



# 1881TM BOOMTRUCK

## FEATURES

**Winch:** 275' of 9/16" diameter 6x37 EIPS wire rope and a 9,600 lb. single line pull.

**Controls:** Dual operator control consoles with independent outrigger controls, foot throttle, cup holder, 12V power outlet, and more.

**Outriggers:** Out-and-down outriggers equipped with removable ball socket aluminum pads. Full and mid-span charts. "A" type rear underframe stabilizers behind rear axle.

**Certification:** Manufactured to ASME B30.5 for Mobile Cranes.

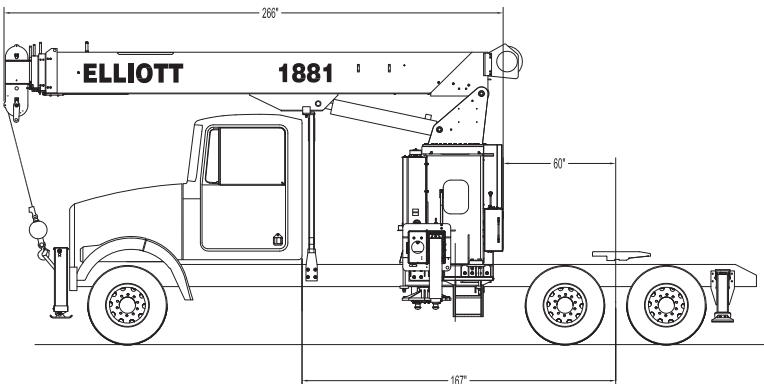
*\*Specifications are subject to change.*

## CHASSIS CONFIGURATION

GROSS AXLE WEIGHT RATING (FRONT)	20,000 LBS / 9072 KG
GROSS AXLE WEIGHT RATING (REAR)	40,000 LBS / 18 144 KG
WHEELBASE (WB)	260" / 6600 MM
CAB TO AXLE (CA/CT)	167" / 4242 MM
AFTERFRAME (AF)	75" / 1905 MM
FRAME STRENGTH (RBM)	3,200,000 RBM

## AVAILABLE OPTIONS

Front Stabilizer for 360 Degree Work Area	Hydraulic Oil Cooler with Electric Fan
Automatic Safety Rotation Lockout (Prevents Boom From Rotating to Side Where Out-Down Outriggers Are Not Fully Extended Horizontally)	Continuous Rotation
Spin Resistant Rope in Lieu of Standard	Metric Load/Range Charts
15 or 20-Ton Hook Block for Up to 4 Parts of Line	Spanish Language Decals and Manuals
	Ship-Out Kit



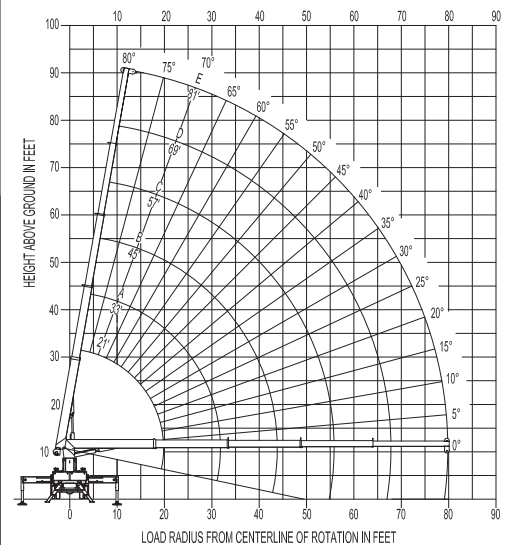
### MAIN BOOM LOAD RATINGS

LOAD RATINGS IN LBS. WITH OUTRIGGERS AND STABILIZERS EXTENDED - FULL SPAN											
LOAD RADIUS IN FEET	LOADED BOOM ANGLE	21-ft	LOADED BOOM ANGLE	A 33-ft	LOADED BOOM ANGLE	B 45-ft	LOADED BOOM ANGLE	C 57-ft	LOADED BOOM ANGLE	D 69-ft	E 81-ft
5	75	36,000									
10	59	19,400	72	17,100	77	16,200					
15	40	14,600	62	12,200	70	11,300	75	10,300	78	9,900	
20			51	9,900	64	8,500	70	8,000	74	7,300	76
25			39	7,800	56	7,300	65	6,300	70	6,000	73
30						48	6,000	59	5,100	65	4,800
35						38	4,900	52	4,600	60	4,000
40						25	3,900	46	3,900	55	3,500
45								38	3,200	50	3,000
50								28	2,700	44	2,600
55								11	1,800	37	2,200
60									29	1,800	43
65											37
70											30
75											22
	0	7,400	0	3,800	0	2,100	0	1,100	0	500	

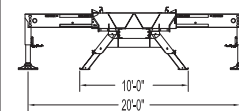
**ELLIOTT**  
EQUIPMENT COMPANY

MODEL 1800 81-FT. BOOM

### RANGE DIAGRAM



OUTRIGGERS AND STABILIZERS EXTENDED - FULL SPAN



OUTRIGGERS AND STABILIZERS EXTENDED - MID SPAN

