



ELLIOTT

EQUIPMENT COMPANY

DOCKMASTER MARINE PEDESTAL CRANES

When it comes to mission critical marine applications, you need equipment you can depend on.

You need your equipment to be ready to go, easy to use and reliably at your service. At Elliott, we understand. That's why Elliott DockMaster cranes are engineered from the ground up for dependable, easy to use operation.

We know your dock space is precious. DockMaster's modular installation ensures your equipment is just where you need it, optimizing boom location, control position and allowing for easy pump access and serviceability. DockMaster's three section boom stows compactly and the DockMaster pedestal easily fits as a drop-in replacement in most facilities.

Operation of the Dockmaster is simple. Full hydraulic, explosion proof controls ensure smooth handling and give you the tactile feedback needed to perform your best.

Featuring stainless steel lift cylinders, "Armor Rod" telescopic hydraulic cylinders, stainless steel pins, marine coatings and easy to access wear items, the DockMaster is built for years of reliable service. That's why it is backed by the best warranty in the industry – two years parts and labor comprehensive warranty and ten year structural warranty.

**Contact your local Elliott
distributor for a solution that's
Built For You.**

**402-592-4500
sales@elliotequip.com**

ELLIOTT DOCKMASTER **ADVANTAGES**

GENERAL

- 10 & 18 Ton Load Capacities
- 38, 50, 60 & 70 Foot Boom Lengths
- Choice of 40 or 75 horsepower explosion proof motor
- Complies with ASME B30.5

INSTALLATION FLEXIBILITY / SMALL FOOTPRINT

- Boom and pedestal control console, pump and motor are individual units allowing for optimal placement to fit your dock
- Three section telescopic boom allows for short retracted boom length taking up minimal space
- Pedestal engineered for drop in replacement on most installations

HYDRAULICS

- Hydraulic boom extension eliminates maintenance of worm gear, motor and brake
- Holding valves on all cylinders
- Application-specific designed pump and motor skid mounts external from the pedestal for easy access and greater serviceability. Vertical orientation of these components provides small footprint and gives location flexibility
- Large rotation bearing for smooth operation and long life



CORROSION RESISTANCE

- Marine prep/paint provides durable, weather resistant coating
- Stainless steel and "Armor Rod" hydraulic cylinders maximize corrosion resistance
- Stainless steel pins in critical areas

EASE OF OPERATION / SAFETY / CONTROLS

- Ergonomic control console mounts separately from crane, giving flexibility in placement, optimizing operator view, minimizing space footprint and eliminating the need for operator to walk around with the boom while rotating
- Full hydraulic controls for smooth operation and tactile feedback
- Adjustable rotation stop for flexible work positions
- Explosion proof assemblies, wiring and enclosures throughout

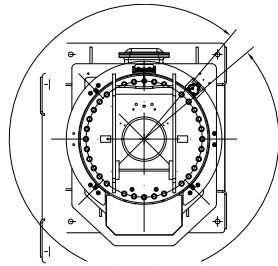
EASE OF SERVICE / WINCH

- Winch mounted in rear of boom for easy access
- 9,060 lb single line pull
- Rated Capacity Limiter (RCL) system aids operator in staying within working parameters and is simple to maintain
- Anti-two-block wiring routed external to boom for easy inspection and simple maintenance
- Optional continuous boom rotation

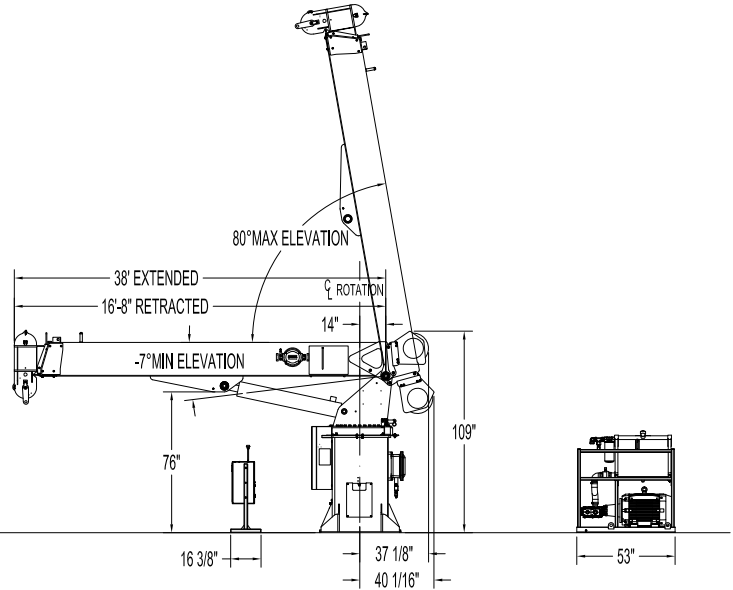
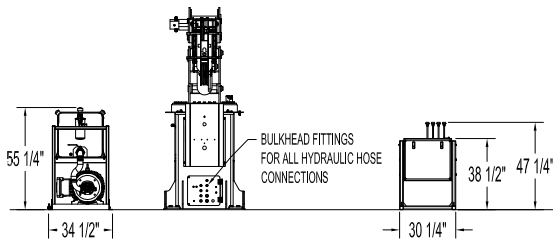
LONG USEFUL LIFE

- Wildlife Nesting & Access Protection standard on all models
- Warranty – two years parts and labor, ten-year structural warranty

**ELLIOTT DOCKMASTER
1038DM**



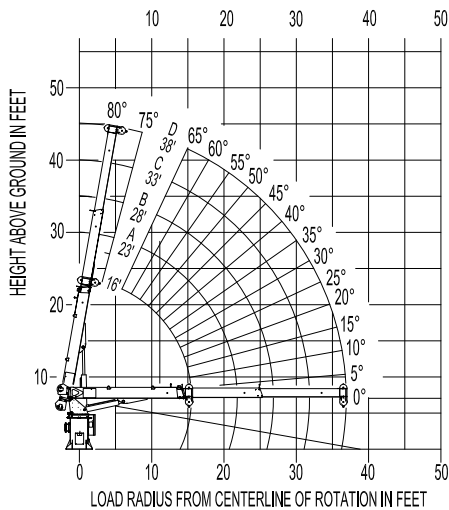
350° ROTATION RANGE
(ADJUSTABLE WORK ENVELOPE LOCATION)



NOTES:

1. MAXIMUM LOAD MOMENT AT MOUNTING SURFACE: 1,700,000 in.-lb.
2. MAXIMUM THRUST LOAD AT MOUNTING SURFACE: 27,000 lb.
3. MAXIMUM TORQUE LOAD AT MOUNTING SURFACE: 300,000 in.-lb.

DOCK MOUNTED PEDESTAL CRANE
RANGE DIAGRAM

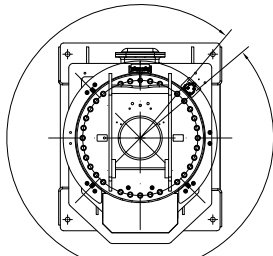


MAIN BOOM LOAD RATINGS

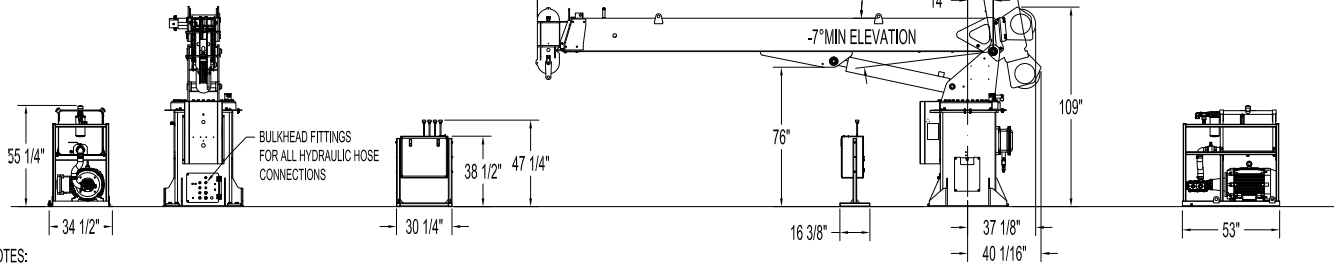
LOAD RATINGS IN LBS.

LOAD RADIUS (feet)	LOADED BOOM ANGLE	LOAD RATINGS IN LBS.									
		16 ft	A	B	C	D	23 ft	28 ft	33 ft	38 ft	
5	70	20,000									
8	58	14,600	68	13,500	72	13,000	75	12,500	77	12,200	
11	44	11,000	59	10,200	65	9,700	69	9,400	72	9,000	
14	23	8,300	50	8,200	58	7,800	64	7,400	67	7,200	
17			38	6,700	50	6,500	57	6,200	62	6,000	
20			22	5,400	41	5,500	51	5,300	57	5,100	
23					30	4,600	45	4,600	52	4,400	
26					16	3,700	36	4,000	46	3,900	
29							25	3,400	39	3,400	
32									31	3,000	
35									19	2,500	
		0	5,600	0	4,000	0	3,200	0	2,700	0	2,300

**ELLIOTT DOCKMASTER
1050DM**



350° ROTATION RANGE
(ADJUSTABLE WORK ENVELOPE LOCATION)

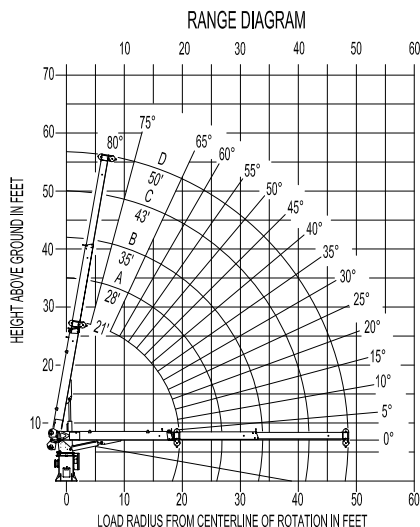


NOTES:

1. MAXIMUM LOAD MOMENT AT MOUNTING SURFACE: 1,600,000 in.-lb.
2. MAXIMUM THRUST LOAD AT MOUNTING SURFACE: 27,000 lb.
3. MAXIMUM TORQUE LOAD AT MOUNTING SURFACE: 300,000 in.-lb.

ELLIOTT MODEL 1000 50-FT. BOOM
EQUIPMENT COMPANY

DOCK MOUNTED PEDESTAL CRANE

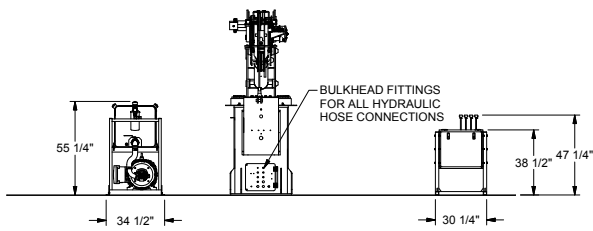
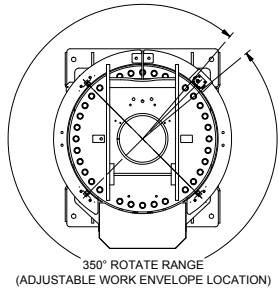


MAIN BOOM LOAD RATINGS

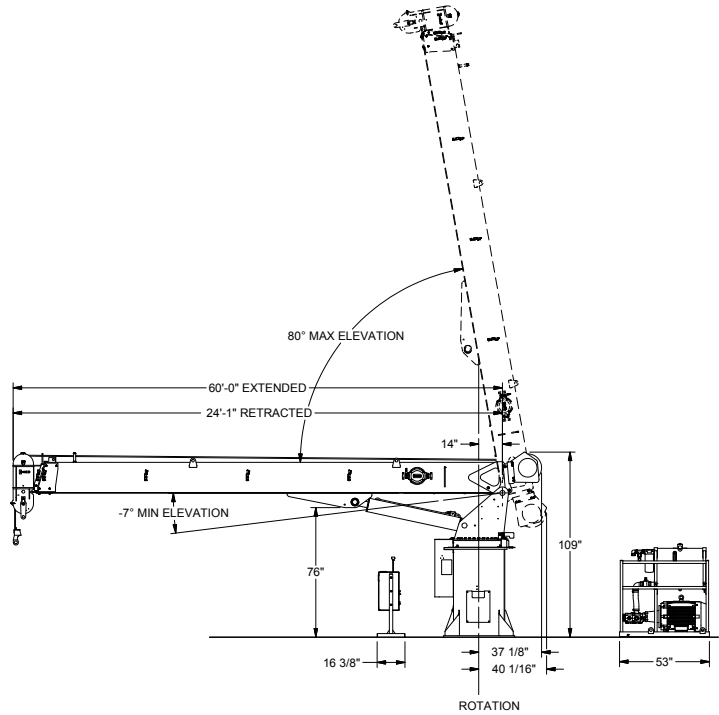
LOAD RATINGS IN LBS.

LOAD RADIUS (feet)	LOADED BOOM ANGLE	LOAD RATINGS IN LBS.												
		21 ft	28 ft	35 ft	43 ft	50 ft	21 ft	28 ft	35 ft	43 ft	50 ft			
5	75	20,000												
10	59	11,000	68	10,200	73	9,700	76	9,300						
15	40	7,500	56	7,000	64	6,600	69	6,200	72	6,000				
20			42	5,200	54	4,900	62	4,600	66	4,400				
25			22	3,700	43	3,800	54	3,600	59	3,500				
30					28	2,900	45	2,900	52	2,800				
35							34	2,300	44	2,300				
40							18	1,700	35	1,800				
45									23	1,400				
	0	1,500	0	1,300	0	1,100	0	800	0	600				

**ELLIOTT DOCKMASTER
1060DM**

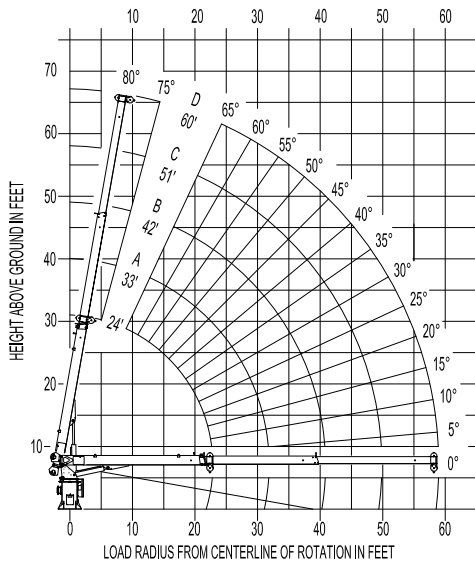


NOTES:
1. MAXIMUM LOAD MOMENTUM AT MOUNTING SURFACE: 1,800,000 in-lb
2. MAXIMUM THRUST LOAD AT MOUNTING SURFACE: 28,000 lb
3. MAXIMUM TORQUE LOAD AT MOUNTING SURFACE: 300,000 in-lb



ELLIOTT MODEL 1000 60-FT. BOOM
EQUIPMENT COMPANY

**DOCK MOUNTED PEDESTAL CRANE
RANGE DIAGRAM**

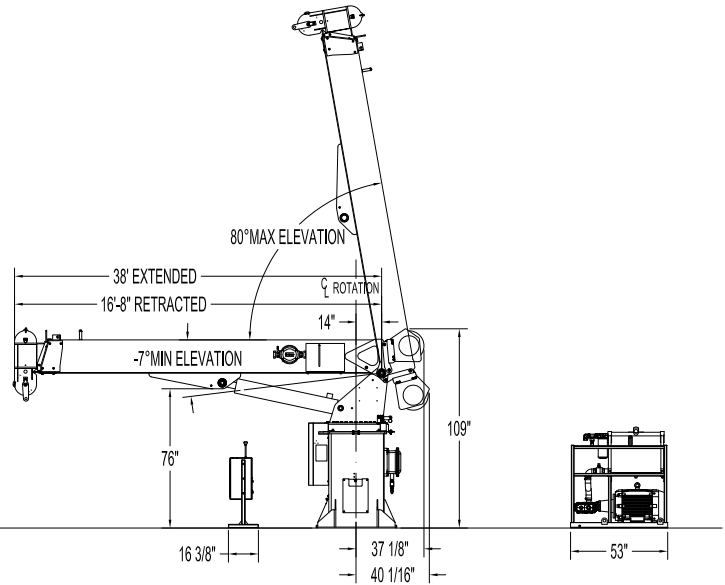
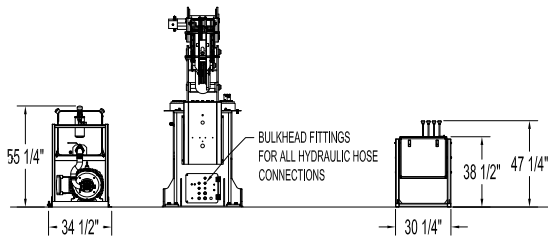
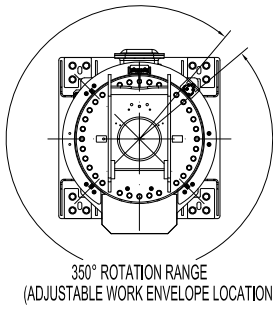


MAIN BOOM LOAD RATINGS

LOAD RATINGS IN LBS.

LOAD RADIUS (feet)	LOADED BOOM ANGLE	LOAD RATINGS IN LBS.							
		24 ft	A 33 ft	LOADED BOOM ANGLE	B 42 ft	LOADED BOOM ANGLE	C 51 ft	LOADED BOOM ANGLE	D 60 ft
5	76	20,000							
10	63	10,800	71	10,000	75	9,500	78	9,200	
15	48	7,300	61	6,700	68	6,300	73	6,000	75
20	27	5,100	52	5,000	61	4,600	67	4,400	70
25			39	3,800	53	3,600	60	3,400	65
30			21	2,700	43	2,800	53	2,700	60
35					32	2,200	46	2,100	54
40					13	1,400	37	1,700	48
45							26	1,300	41
50									32
55									27
	0	1,200	0	900	0	600	0	300	0

ELLIOTT DOCKMASTER
1838DM

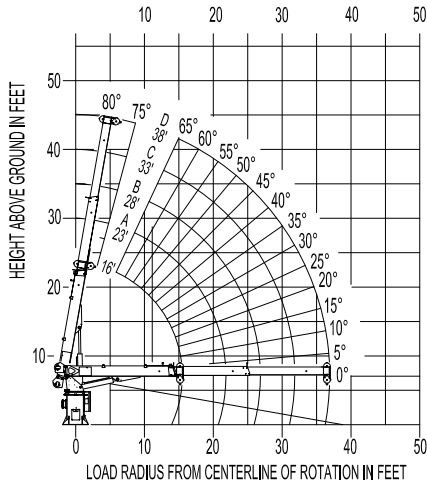


- NOTES:
1. MAXIMUM LOAD MOMENTUM AT MOUNTING SURFACE: 2,750,000 in.-lb.
2. MAXIMUM THRUST LOAD AT MOUNTING SURFACE: 42,500 lb.
3. MAXIMUM TORQUE LOAD AT MOUNTING SURFACE: 300,000 in.-lb.

ELLIOTT MODEL 1800 38-FT. BOOM
EQUIPMENT COMPANY

DOCK MOUNTED PEDESTAL CRANE

RANGE DIAGRAM

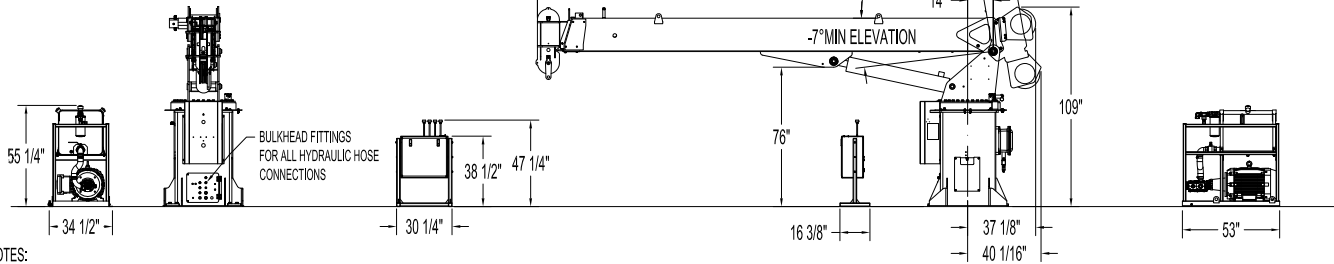
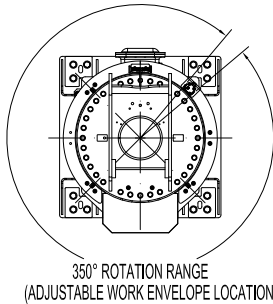


MAIN BOOM LOAD RATINGS

LOAD RATINGS IN LBS.

LOAD RADIUS (feet)	LOADED BOOM ANGLE	LOAD RATINGS IN LBS.								
		16 ft	LOADED BOOM ANGLE	A 23 ft	LOADED BOOM ANGLE	B 28 ft	LOADED BOOM ANGLE	C 33 ft	LOADED BOOM ANGLE	D 38 ft
5	70	36,000								
8	58	24,900	68	22,900	72	21,400	75	20,000	77	18,900
11	44	19,000	59	17,600	65	16,800	69	16,000	72	15,700
14	23	14,600	50	14,300	58	13,700	64	13,100	67	12,700
17			38	12,000	50	11,600	57	11,100	62	10,700
20			22	9,800	41	9,900	51	9,600	57	9,200
23					30	8,500	45	8,400	52	8,100
26					16	7,000	36	7,400	46	7,300
29							25	6,400	39	6,500
32									31	5,800
35									19	4,900
	0	10,200	0	7,300	0	5,900	0	5,000	0	4,300

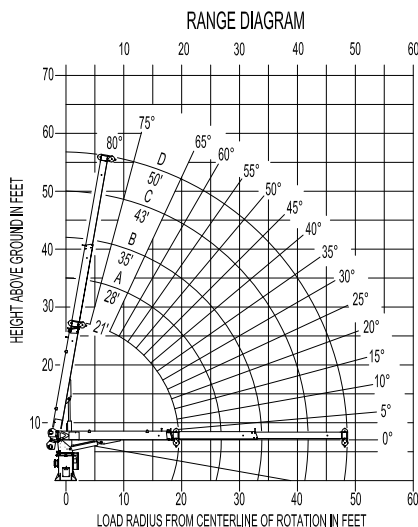
ELLIOTT DOCKMASTER
1850DM



- NOTES:
1. MAXIMUM LOAD MOMENTUM AT MOUNTING SURFACE: 3,000,000 in.-lb.
 2. MAXIMUM THRUST LOAD AT MOUNTING SURFACE: 43,000 lb.
 3. MAXIMUM TORQUE LOAD AT MOUNTING SURFACE: 300,000 in.-lb.

ELLIOTT MODEL 1800 50-FT. BOOM
EQUIPMENT COMPANY

DOCK MOUNTED PEDESTAL CRANE

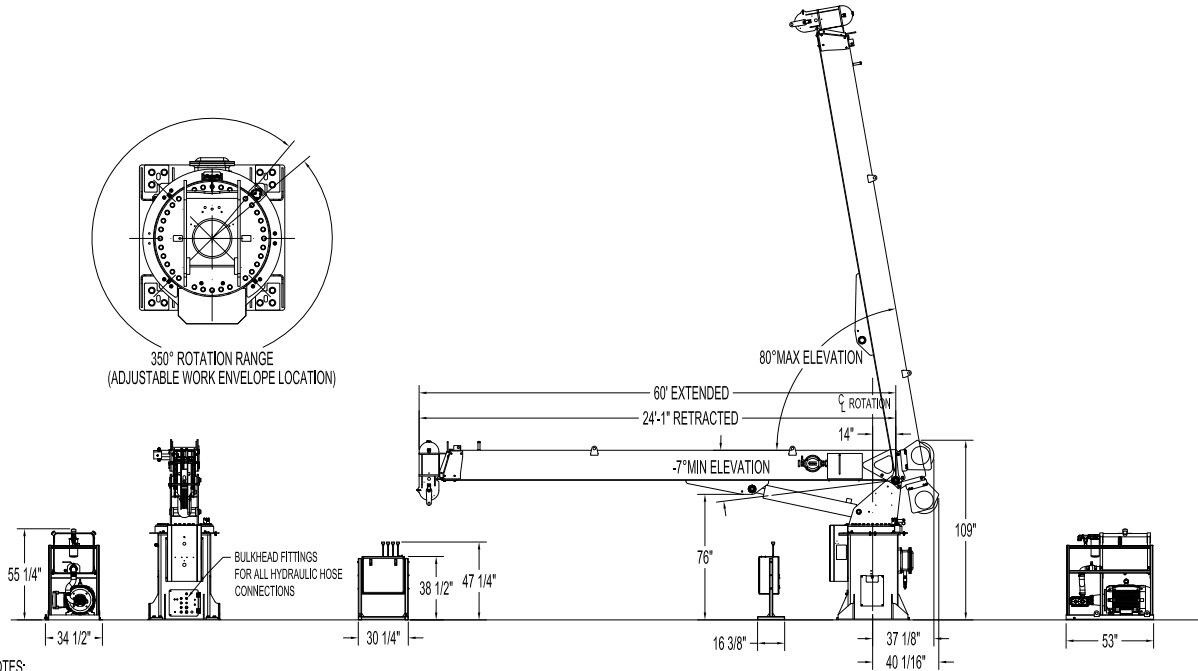


MAIN BOOM LOAD RATINGS

LOAD RATINGS IN LBS.

LOAD RADIUS (feet)	LOADED BOOM ANGLE	LOAD RATINGS IN LBS.								
		21 ft	LOADED BOOM ANGLE	A 28 ft	LOADED BOOM ANGLE	B 35 ft	LOADED BOOM ANGLE	C 43 ft	LOADED BOOM ANGLE	D 50 ft
5	75	36,000								
10	59	21,000	68	19,800	73	18,000	76	17,600		
15	40	14,700	56	13,600	64	12,700	69	12,300	72	11,500
20			42	10,500	54	10,000	62	9,500	66	9,000
25			22	8,000	43	8,100	54	7,700	59	7,400
30					28	6,400	45	6,500	52	6,200
35							34	5,400	44	5,300
40							18	4,300	35	4,400
45									23	3,800
	0	8,300	0	5,600	0	4,100	0	3,000	0	2,400

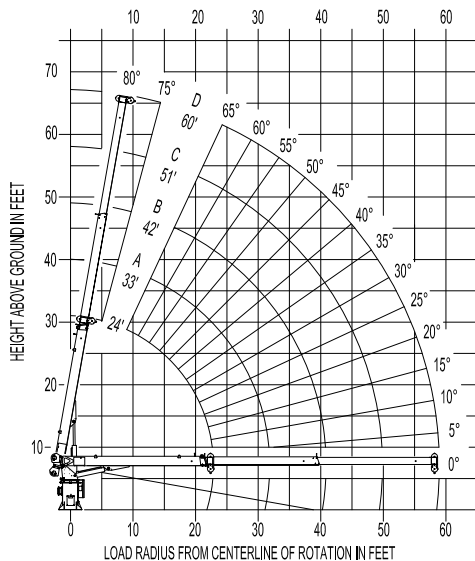
ELLIOTT DOCKMASTER
1860DM



- NOTES:
1. MAXIMUM LOAD MOMENTUM AT MOUNTING SURFACE: 2,900,000 in.-lb.
 2. MAXIMUM THRUST LOAD AT MOUNTING SURFACE: 43,500 lb.
 3. MAXIMUM TORQUE LOAD AT MOUNTING SURFACE: 300,000 in.-lb.

ELLIOTT MODEL 1800 60-FT. BOOM
EQUIPMENT COMPANY

DOCK MOUNTED PEDESTAL CRANE
RANGE DIAGRAM

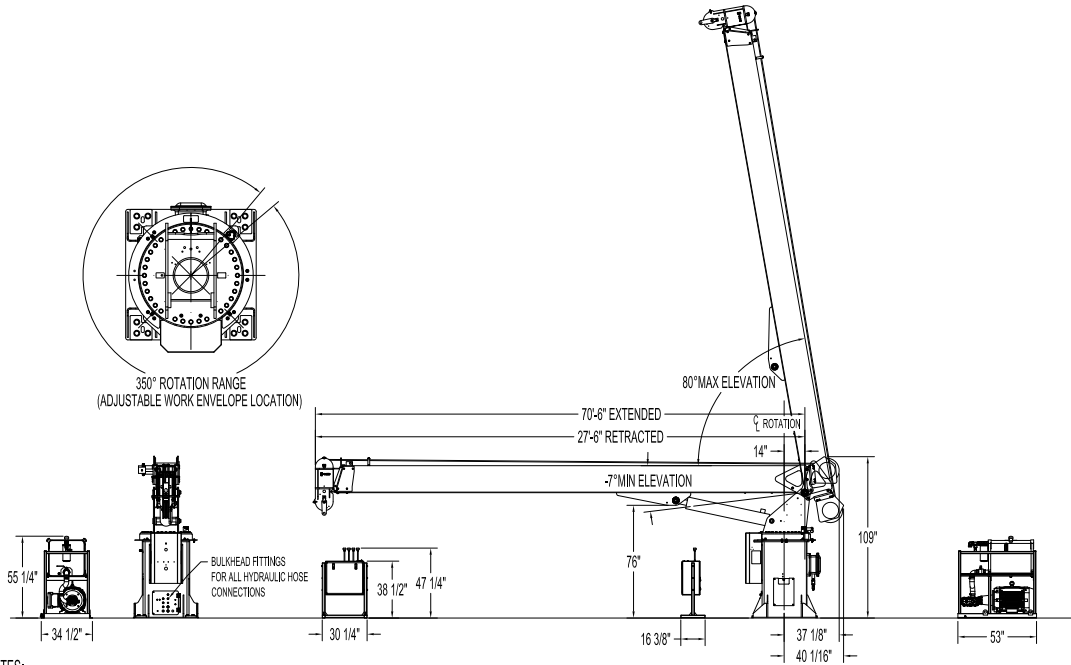


MAIN BOOM LOAD RATINGS

LOAD RATINGS IN LBS.

LOAD RADIUS (feet)	LOADED BOOM ANGLE	LOAD RATINGS IN LBS.								
		24 ft	33 ft	42 ft	51 ft	60 ft	A	B	C	D
5	76	36,000								
10	63	19,500	71	17,800	75	17,000	78	15,900		
15	48	13,600	61	12,600	68	11,800	73	11,300	75	11,000
20	27	10,000	52	9,600	61	9,000	67	8,600	70	8,300
25			39	7,700	53	7,300	60	6,900	65	6,600
30			21	5,900	43	6,000	53	5,800	60	5,500
35					32	5,000	46	4,900	54	4,700
40					13	3,700	37	4,100	48	4,000
45							26	3,400	41	3,500
50									32	2,900
55									27	2,600
	0	6,400	0	4,200	0	2,800	0	2,000	0	1,400

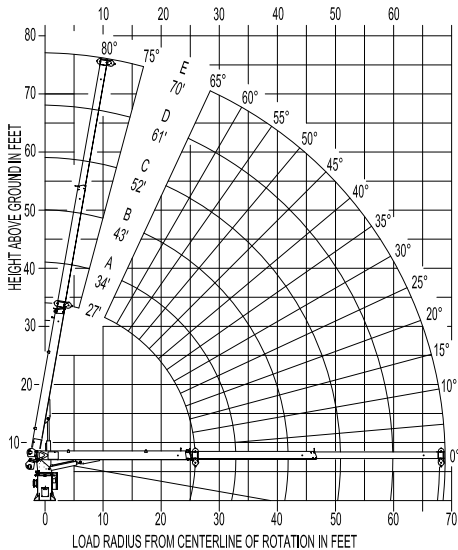
ELLIOTT DOCKMASTER
1870DM



- NOTES:
 1. MAXIMUM LOAD MOMENTUM AT MOUNTING SURFACE: 2,850,000 in-lb.
 2. MAXIMUM THRUST LOAD AT MOUNTING SURFACE: 44,000 lb.
 3. MAXIMUM TORQUE LOAD AT MOUNTING SURFACE: 300,000 in-lb.

ELLIOTT MODEL 1800 70-FT. BOOM
EQUIPMENT COMPANY

DOCK MOUNTED PEDESTAL CRANE
RANGE DIAGRAM



MAIN BOOM LOAD RATINGS

LOAD RATINGS IN LBS.

LOAD RADIUS (feet)	LOADED BOOM ANGLE	27 ft	LOADED BOOM ANGLE	A 34 ft	LOADED BOOM ANGLE	B 43 ft	LOADED BOOM ANGLE	C 52 ft	LOADED BOOM ANGLE	D 61 ft	BOOM ANGLE	E 70 ft
5	79	36,000										
10	68	17,800	73	17,000	77	16,000	80	15,800				
15	56	12,400	64	11,700	70	11,100	75	10,700	78	10,400	80	10,200
20	41	9,400	54	9,000	63	8,500	69	8,100	73	7,800	76	7,600
25	19	6,800	43	7,200	55	6,800	62	6,500	68	6,200	71	6,000
30			27	5,700	47	5,600	56	5,400	63	5,100	67	4,900
35					36	4,700	49	4,500	56	4,300	62	4,200
40					20	3,600	41	3,900	50	3,700	56	3,600
45							30	3,200	43	3,200	51	3,100
50							14	2,400	36	2,700	45	2,700
55									26	2,300	39	2,300
60											32	2,000
65											22	1,600
	0	4,800	0	3,500	0	2,400	0	1,600	0	1,100	0	700