

The logo for Elliott Equipment Company, featuring the word "ELLIOTT" in a bold, red, sans-serif font inside a black rectangular border.

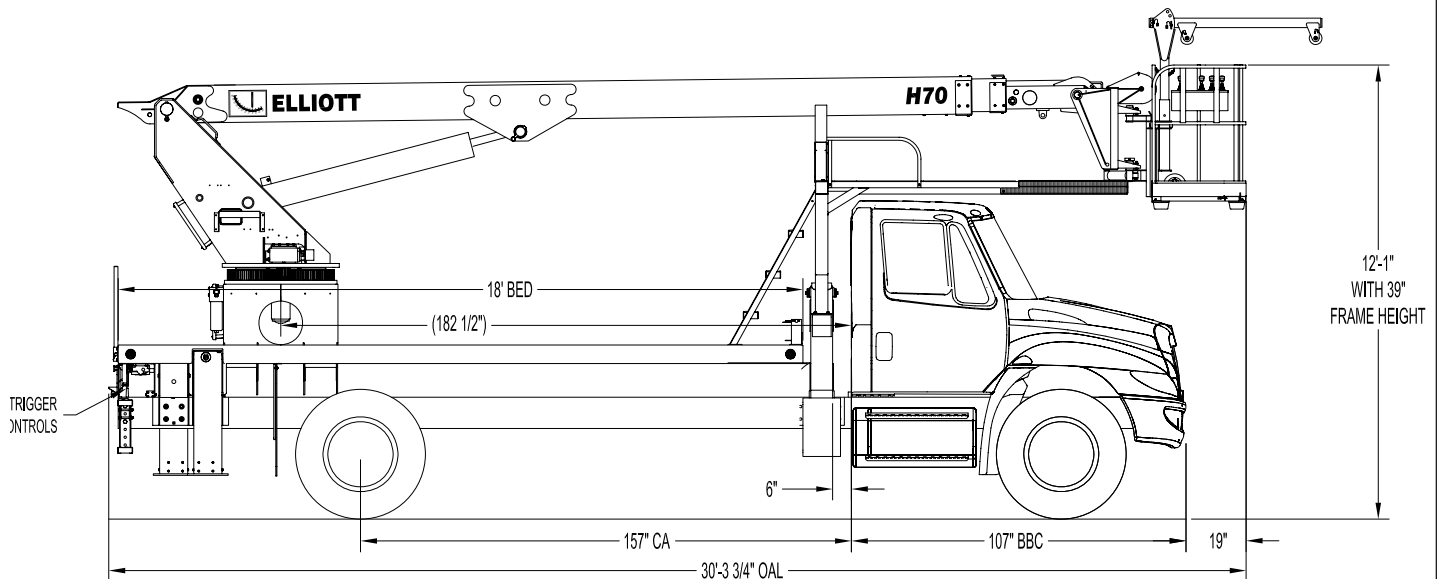
EQUIPMENT COMPANY

# HiReach 70 to 95 Feet





### H70R SIDE VIEW DIAGRAM



- **Working Height** 70' / 21,3 m
- **Working Side Reach** 62' / 18,9 m
- **Platform Capacity** 500 lbs / 227 kg
- **Platform Size** 40" x 60" / 102 x 152 cm
- **Platform Type** EZR
- **Lifting Capacity (Main Winch)** 5,900 lbs / 2,676 kg
- **Jib Winch** 500 lbs / 227 kg

- **Powered Boom Sections** 3
- **Overall Height** 12'1" / 3,7m
- **Unit Weight (Bare)** 17,600 lbs / 7983 kg
- **Outrigger Spread Main** 18' / 5,5m
- **Outrigger Spread Auxiliary** 12'6" / 3,8m
- **Front Gross Axle Weight Rating** 13,000 lbs / 5896 kg
- **Rear Gross Axle Weight Rating** 33,000 lbs / 14968 kg

## TECHNICAL SPECIFICATIONS

**Maximum Platform Height:** 65' ground to platform floor.

**Working Range:** 70' max. height and 62' max. side reach.

**Work Platform:** 40"x60" EZR end-hung work platform with 40" high rails. Equipped with two safety lanyard attachment loops and two safety harnesses and 72" lanyards. Platform capacity 500 lbs.

**Platform Leveling System:** Hydraulic "closed" system consisting of twin platform cylinders interacting with a boom-actuated master cylinder mounted in boom support turret. System provided with factory-set relief valves to compensate for oil expansion or overload during platform leveling operation. Remote releveling controls provided in platform and at ground controls to give precise releveling capability.

**Platform Controls:** Three individual proportional electronic controllers meter pilot-operated, pressure-compensated modulating valves. Remote controls for boom operations from platform operate from a removable remote control box. Hi/Lo range, start/stop and engine speed toggle controls are also located at platform. Electric remote control cable extends through the electrical slip ring to cable carrier on side of boom to extending boom sections.

**Lower Controls:** Mounted on roadside of turret.

**Outrigger Controls:** Parallel open-center stack valve for lever-operated control of right and left outriggers. The outrigger valves are mounted at the rear, under each corner of the bed with roadside valve controlling roadside outriggers and curbside valve controlling curbside outriggers.

**Outriggers:** "A" type auxiliary outriggers with 12'6" spread. "MH" out and down type main outriggers with 18'

spread.

**Frame:** One piece, all welded, box-type fabrication with integral outrigger mounts.

**Turret:** Reverse offset turret is one-piece weldment mounted on turret box. Turret rotates on large diameter ball bearing.

**Rotation:** Continuous turret rotation with no stops. Hydraulic motor drives turret through self-locking gear box.

**Boom:** Steel rectangular tube sections. Assembly includes heavy-duty cylinder fittings, pivot pins, and replaceable wear pads.

**Boom Extension:** Two opposing "piggyback" extension cylinders extend the boom sections.

**Lift:** One single-acting full displacement, long stroke cylinder, provides smooth and stable boom elevation. Holding valve prevent boom from falling in event of hose failure.

**Cylinders:** All cylinders use microhoned cylinder tubing, chrome shafts, top grade packing and protective rod wipers. Cylinder-mounted holding valves provided on all load-holding cylinders.

**Hoses:** All high pressure hoses are wire braid reinforced with a minimum safety factor of 4 to 1.

**Oil Tank Capacity:** 35 gallon mounted to truck frame on roadside.

**Hydraulic System:** Operating pressure is 2,500 PSI. System is parallel open center type and is equipped with liquid-filled pressure gauge. Oil is supplied to upper cylinders through hydraulic union in center of turret to cable carrier along side of the boom.

**Pump:** Gear type, direct mount to truck PTO.

**PTO:** Heavy-duty, high-speed. Cable engaged from cab.

**Cab Equipment:** PTO cable or switch

with indicator lights installed in truck cab. Engine speed control and start/stop installed with control switches in platform remote control box and also located at lower controls. U/L approved 5:BC dry chemical fire extinguisher installed in truck cab.

**Operators Manual & Video:** Two CDs and one printed copy of operation, maintenance, safety and parts manual provided with each unit. Operational and safety video provided at delivery.

**Installation:** Unit installed on truck, painted, system and tank filled with oil, tested, inspected, and ready to operate.

**Standard Paint:** Paint boom and turret red, outriggers red, and bed and boxes black. Top of steel bed painted with black nonskid surface.

**Bumper:** Bureau of Motor Carrier Safety rear bumper.

**Weight:** Approximately 19,400 lbs. with 18' steel-floor bed less truck.

**Truck Chassis Required:** Approx. 156" C.A. RBM 1,600,000 in-lb. per rail, 13,000 lb. front axle and 33,000 lb. GVWR required. Trucks must have increased cooling, heavy-duty front and rear springs, 12V electrical system with high capacity alternator, cab clearance stop/tail/backup lights, and I.D. lamps. Recommended GVWR is minimum for HI-REACH with flatbed only. Contact factory when additional equipment is to be added.

**Options:**

5,900 lb Capacity Boom Winch

500 lb Capacity Platform Material Handling Jib.

Welder, Air, 110V Lines and More to Platform.

Custom Toolbox Configurations.

Much more....

Elliott Equipment Company reserves the right to change the specification of any unit at any time without prior notice. This brochure is only a statement of general specifications on the date of this publication. For more detailed info on specific Elliott trucks go to [www.elliottequip.com](http://www.elliottequip.com)

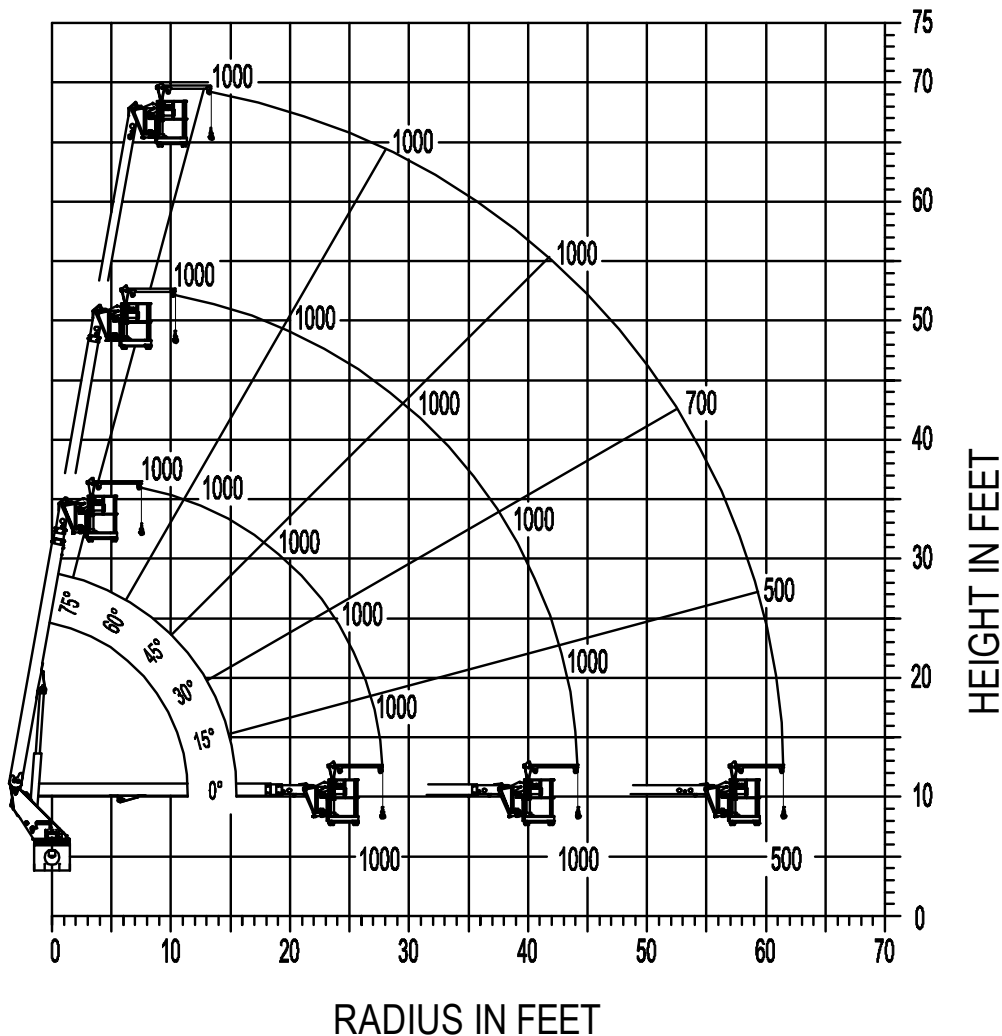
**MAXIMUM JIB CAPABILITIES**

**MAXIMUM WORKING LOADS  
PLATFORM JIB OPERATION**

**MODEL H70**

**TOTAL PLATFORM CAPACITY (JIB LOAD PLUS PERSONNEL)**

USE OUTRIGGERS AT ALL TIMES • AVOID JERKING LOAD  
360° BOOM RADIUS

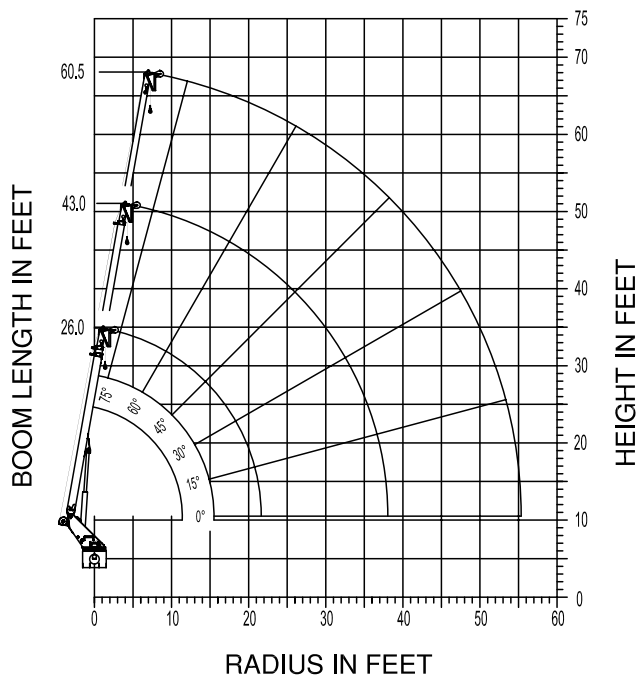


**JIB 500 LBS. MAX. PERSONNEL 500 LBS. MAX.**

**MAXIMUM LIFTING CAPABILITIES**



**MODEL H70**



DO NOT PAINT OVER ANY LABELS

**MAXIMUM WORKING LOADS  
CRANE OPERATION  
MODEL H70**

WINCH LINE LOAD (POUNDS) ON BOOM SHEAVE HEAD  
WITH BASKET REMOVED.  
2,000 LBS. MAXIMUM WINCH LINE LOAD  
ON AUXILIARY LEVELING BRACKET SHEAVE HEAD.

| RADIUS (FT.) | 26.0' BOOM LENGTH |             | 43.0' BOOM LENGTH |             | 60.5' BOOM LENGTH |             |
|--------------|-------------------|-------------|-------------------|-------------|-------------------|-------------|
|              | ANGLE (DEG.)      | LOAD (LBS.) | ANGLE (DEG.)      | LOAD (LBS.) | ANGLE (DEG.)      | LOAD (LBS.) |
| 2            | 80                | 5,900       |                   |             |                   |             |
| 5            | 75                | 5,200       | 80                | 3,800       |                   |             |
| 8            | 68                | 4,600       | 77                | 3,500       | 80                | 2,500       |
| 9            | 65                | 4,000       | 75                | 3,400       | 79                | 2,400       |
| 11           | 60                | 3,400       | 72                | 3,100       | 77                | 2,300       |
| 14           | 53                | 3,300       | 69                | 2,800       | 75                | 2,200       |
| 16           | 45                | 3,200       | 65                | 2,400       | 72                | 2,000       |
| 20           | 30                | 2,700       | 60                | 2,000       | 69                | 1,900       |
| 23           | 15                | 2,500       | 54                | 1,900       | 65                | 1,700       |
| 24           | 0                 | 2,400       | 53                | 1,900       | 64                | 1,600       |
| 29           |                   |             | 45                | 1,800       | 60                | 1,500       |
| 36           |                   |             | 30                | 1,600       | 52                | 1,300       |
| 40           |                   |             | 15                | 1,500       | 46                | 1,200       |
| 41           |                   |             | 0                 | 1,400       | 45                | 1,200       |
| 51           |                   |             |                   |             | 30                | 1,100       |
| 57           |                   |             |                   |             | 15                | 1,000       |
| 59           |                   |             |                   |             | 0                 | 1,000       |

USE OUTRIGGERS AT ALL TIMES \* AVOID JERKING LOADS  
360° RADIUS \* USE 2 PART LINE FOR LOADS OVER 2,500 LBS.  
**DEDUCT 125 LBS. WITH BASKET ATTACHED**

021303 1066610

## CHASSIS DATA

|                                | H70R                                 |
|--------------------------------|--------------------------------------|
| Wheelbase (WB)                 | 224" / 569 cm                        |
| Cab to Tandem (CA)             | 156" / 396 cm                        |
| Cab to End of Frame (EOF)      | 240" / 610 cm                        |
| Frame Section Modulus          | 13.3 in3 / 120,000 psi / 827,371 kPa |
| Front Axle Gross Weight Rating | 13,000 lb / 5896 kg                  |
| Rear Axle Gross Weight Rating  | 20,000 lb / 9072 kg                  |
| Extended Front Frame           | N/A                                  |

Chassis data is minimum general requirements-not for engineering.  
Actual dimensions and truck data will depend on truck selection and axle configuration.

## OPTIONS



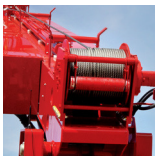
### MH Outriggers With Shortjacking

Reduce outrigger spread with MH outriggers behind the cab and Elliott's Automatic Safety Rotation Lockout to operate your HiReach in confined spaces.



### Platform Material Handling Jib

Equip your HiReach platform with a material handling jib crane to lift up to 500 pounds right from the platform.



### High Capacity Boom Winch

Explore the 5,900 lb or 2,000 lb capacity boom winch options that convert the HiReach into a combination aerial work platform and crane.



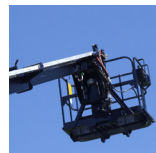
### Outrigger Pad Holders

Outrigger pad holders safely store your pads for travel and leave plenty of room for tool boxes.



### Bed Accessories

Mount a wide variety of tool accessories including welders, power washers, and generators on the bed with lines to the platform.



### Platform Accessories

Choose from a list of platform accessories including 110V outlets, welding leads, hydraulic tools, and much more.



### Hydraulic 2-Speed Digger

Dig holes without requiring a second truck by using Elliott's stowable planetary digger system featuring 24", 36" and 48" auger options.

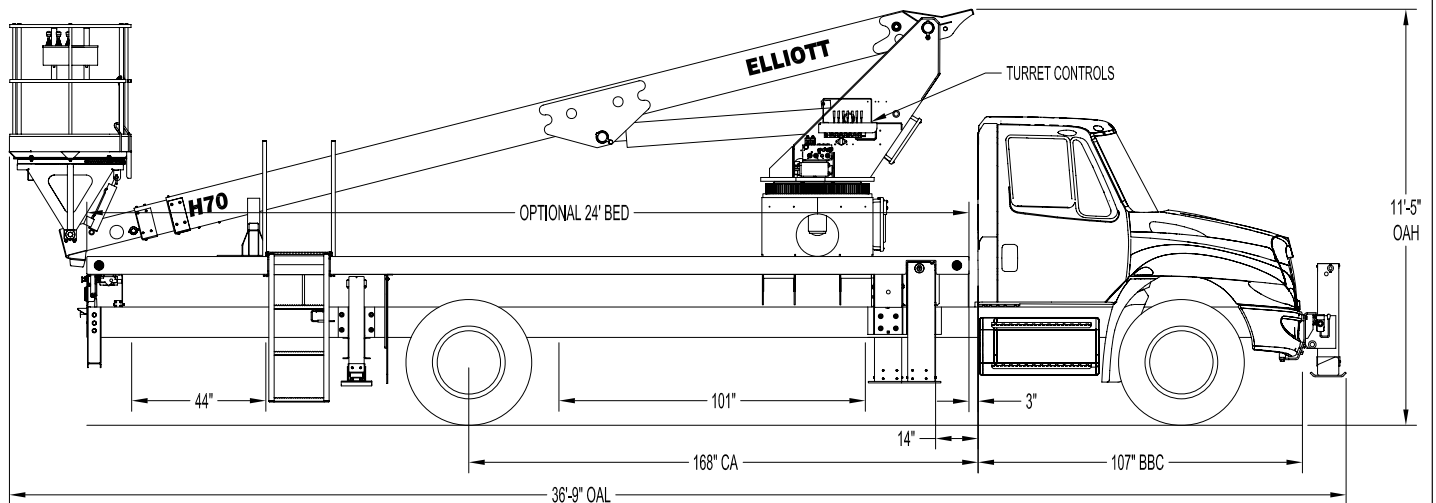


### Line Body

Let us work with you to customize a line body to secure your tools and supplies the the best way for your application.



### H70F SIDE VIEW DIAGRAM



- |  |                          |   |                      |
|--|--------------------------|---|----------------------|
| • <b>Working Height</b>                | 75' / 23 m               | • <b>Powered Boom Sections</b>          | 3                    |
| • <b>Working Side Reach</b>            | 58' / 17,7 m             | • <b>Overall Height</b>                 | 11'5" / 3,5 m        |
| • <b>Platform Capacity</b>             | 600 lbs / 272 kg         | • <b>Unit Weight (Bare)</b>             | 17,600 lbs / 7983 kg |
| • <b>Platform Size</b>                 | 40" x 60" / 102 x 152 cm | • <b>Outrigger Spread Main</b>          | 18' / 5,5 m          |
| • <b>Platform Type</b>                 | Top-Mount                | • <b>Outrigger Spread Auxiliary</b>     | 8' / 2,4 m           |
| • <b>Lifting Capacity (Main Winch)</b> | 5,900 lbs / 2676 kg      | • <b>Front Gross Axle Weight Rating</b> | 13,000 lbs / 5897 kg |
| • <b>Jib Winch</b>                     | 1,000 lbs / 454 kg       | • <b>Rear Gross Axle Weight Rating</b>  | 20,000 lbs / 9072 kg |

## TECHNICAL SPECIFICATIONS

**Maximum Platform Height:** 70' ground to platform floor.

**Working Range:** 75' max. height and 58' max. side reach.

**Work Platform:** 40x60" Top-Mount work platform with 40" high rails. Equipped with two safety lanyard attachment loops and two safety harnesses and 72" lanyards. Platform capacity 600 lbs.

**Platform Leveling System:** Hydraulic "closed" system consisting of twin platform cylinders interacting with a boom-actuated master cylinder mounted in boom support turret. System provided with factory-set relief valves to compensate for oil expansion or overload during platform leveling operation. Remote releveling controls provided in platform and at ground controls to give precise releveling capability.

**Platform Controls:** Three individual proportional electronic controllers meter pilot-operated, pressure-compensated modulating valves. Remote controls for boom operations from platform operate from a removable remote control box. Hi/Lo range, start/stop and engine speed toggle controls are also located at platform. Electric remote control cable extends through the electrical slip ring to cable carrier on side of boom to extending boom sections.

**Lower Controls:** Mounted on roadside of turret.

**Outrigger Controls:** Parallel open-center stack valve for lever-operated control of right and left outriggers. The outrigger valves are mounted at the rear, under each corner of the bed with roadside valve controlling roadside outriggers and curbside valve controlling curbside outriggers.

**Outriggers:** "MH" out and down type main outriggers with 18' spread behind cab. "A" type auxiliary outriggers with 8'

spread at rear. Front stabilizer required for 360 degree area of operation.

**Frame:** One piece, all welded, box-type fabrication with integral outrigger mounts.

**Turret:** Reverse offset turret is one-piece weldment mounted on turret box. Turret rotates on large diameter ball bearing.

**Rotation:** Continuous turret rotation with no stops. Hydraulic motor drives turret through self-locking gear box.

**Boom:** Steel rectangular tube sections. Assembly includes heavy-duty cylinder fittings, pivot pins, and replaceable wear pads.

**Boom Extension:** Two opposing "piggyback" extension cylinders extend the boom sections.

**Lift:** One single-acting full displacement, long stroke cylinder, provides smooth and stable boom elevation. Holding valve prevent boom from falling in event of hose failure.

**Cylinders:** All cylinders use microhoned cylinder tubing, chrome shafts, top grade packing and protective rod wipers. Cylinder-mounted holding valves provided on all load-holding cylinders.

**Hoses:** All high pressure hoses are wire braid reinforced with a minimum safety factor of 4 to 1.

**Oil Tank Capacity:** 35 gallon mounted to truck frame on roadside.

**Hydraulic System:** Operating pressure is 2,500 PSI. System is parallel open center type and is equipped with liquid-filled pressure gauge. Oil is supplied to upper cylinders through hydraulic union in center of turret to cable carrier along side of the boom.

**Pump:** Gear type, direct mount to truck PTO.

**PTO:** Heavy-duty, high-speed. Switch engaged from cab.

**Cab Equipment:** PTO switch with indicator light installed in truck cab. Engine speed control and start/stop installed with control switches in platform remote control box and also located at lower controls. U/L approved 5:BC dry chemical fire extinguisher installed in truck cab.

**Operators Manual & Video:** Two CDs and one printed copy of operation, maintenance, safety and parts manual provided with each unit. Operational and safety video provided at delivery.

**Installation:** Unit installed on truck, painted, system and tank filled with oil, tested, inspected, and ready to operate.

**Standard Paint:** Paint boom and turret red, outriggers red, and bed and boxes black. Top of steel bed painted with black nonskid surface.

**Bumper:** Bureau of Motor Carrier Safety rear bumper.

**Weight:** Approximately 17,600 lbs. with 24' steel-floor bed less truck.

**Truck Chassis Required:** Approx. 168" C.A. RBM 1,600,000 in-lb. per rail, 13,000 lb. front axle and 33,000 lb. GVWR required. Trucks must have increased cooling, heavy-duty front and rear springs, front frame extensions, 12V electrical system with high capacity alternator, cab clearance stop/tail/backup lights, and I.D. lamps. Recommended GVWR is minimum for HiReach with flatbed only. Contact factory when additional equipment is to be added.

**Options:**

5,900 lb Capacity Boom Winch

1,000 lb Capacity Platform Material Handling Jib.

Welder, Air, Pressure Washer, and 110V Lines to Platform.

Custom Toolbox Configurations.

Much More....

Elliott Equipment Company reserves the right to change the specification of any unit at any time without prior notice. This brochure is only a statement of general specifications on the date of this publication. For more detailed info on specific Elliott trucks go to [www.elliottequip.com](http://www.elliottequip.com)

**MAXIMUM RANGE CAPABILITIES**

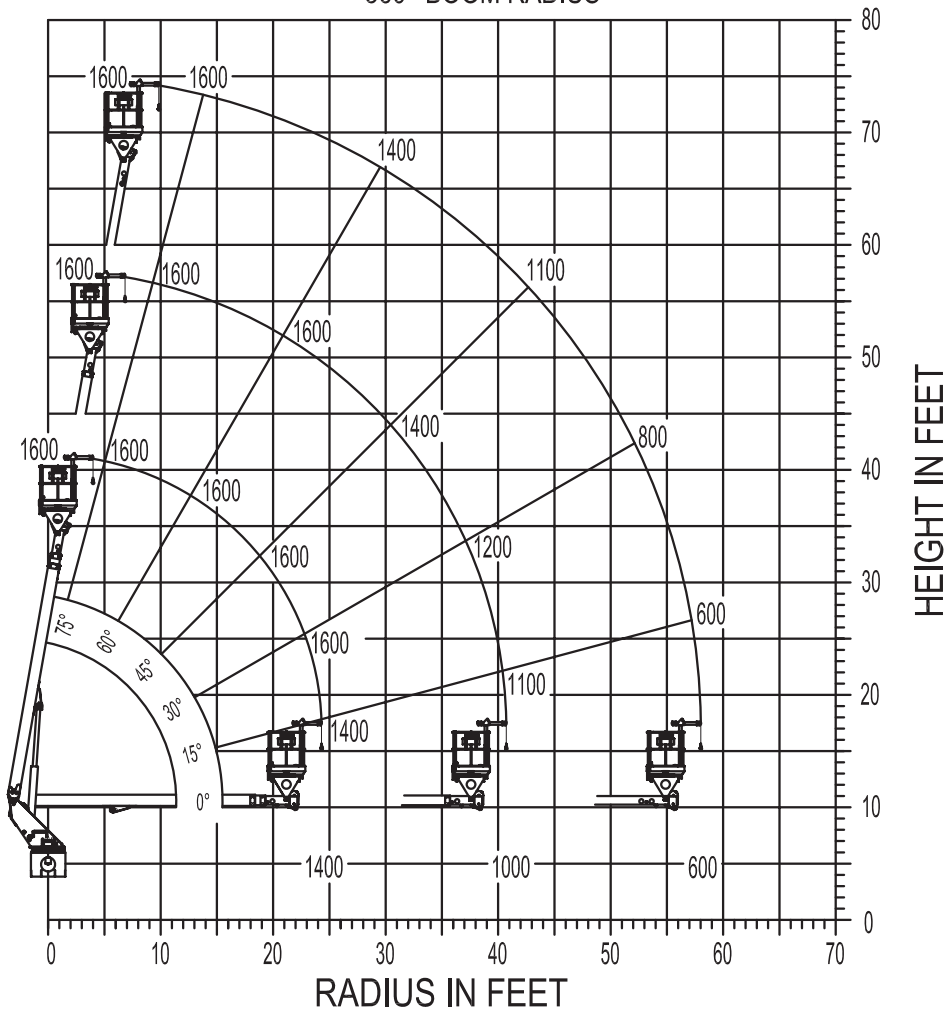
**MAXIMUM WORKING LOADS  
PLATFORM JIB OPERATION**

**MODEL H70**

**TOTAL PLATFORM CAPACITY (JIB LOAD PLUS PERSONNEL)**

USE OUTRIGGERS AT ALL TIMES • AVOID JERKING LOAD

360° BOOM RADIUS



**JIB 1000 LBS. MAX. PERSONNEL 600 LBS. MAX.**

**ELLIOTT**  
EQUIPMENT COMPANY

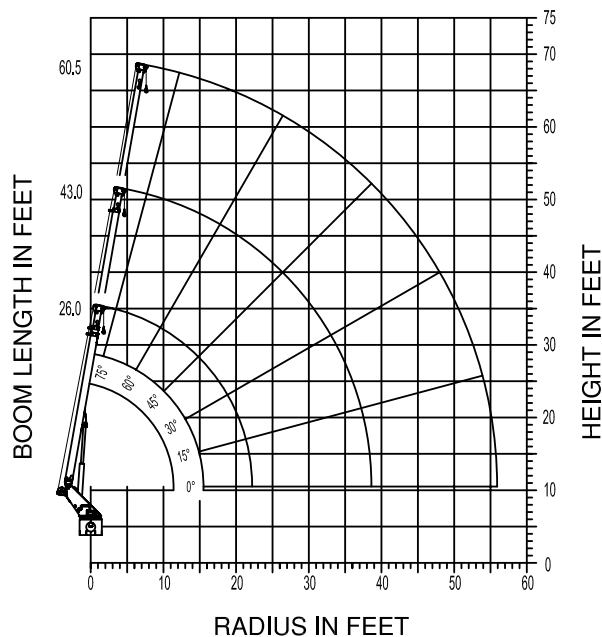
DO NOT PAINT OVER ANY LABELS

030304 1075030

**MAXIMUM WINCH LIFTING CAPABILITIES**



**MODEL H70**



DO NOT PAINT OVER ANY LABELS

**MAXIMUM WORKING LOADS  
CRANE OPERATION  
MODEL H-70**

**WINCH LINE LOAD (POUNDS) WITH BUCKETS  
OR PLATFORM REMOVED.**

| RADIUS<br>(FT.) | 26.0' BOOM LENGTH |                | 43.0' BOOM LENGTH |                | 60.5' BOOM LENGTH |                |
|-----------------|-------------------|----------------|-------------------|----------------|-------------------|----------------|
|                 | ANGLE<br>(DEG.)   | LOAD<br>(LBS.) | ANGLE<br>(DEG.)   | LOAD<br>(LBS.) | ANGLE<br>(DEG.)   | LOAD<br>(LBS.) |
| 2               | 80                | 5,900          |                   |                |                   |                |
| 5               | 75                | 5,200          | 80                | 3,800          |                   |                |
| 8               | 68                | 4,600          | 77                | 3,500          | 80                | 2,500          |
| 9               | 65                | 4,000          | 75                | 3,400          | 79                | 2,400          |
| 11              | 60                | 3,400          | 72                | 3,100          | 77                | 2,300          |
| 14              | 53                | 3,300          | 69                | 2,800          | 75                | 2,200          |
| 16              | 45                | 3,200          | 65                | 2,400          | 72                | 2,000          |
| 20              | 30                | 2,700          | 60                | 2,000          | 69                | 1,900          |
| 23              | 15                | 2,500          | 54                | 1,900          | 65                | 1,700          |
| 24              | 0                 | 2,400          | 53                | 1,900          | 64                | 1,600          |
| 29              |                   |                | 45                | 1,800          | 60                | 1,500          |
| 36              |                   |                | 30                | 1,600          | 52                | 1,300          |
| 40              |                   |                | 15                | 1,500          | 46                | 1,200          |
| 41              |                   |                | 0                 | 1,400          | 45                | 1,200          |
| 51              |                   |                |                   |                | 30                | 1,100          |
| 57              |                   |                |                   |                | 15                | 1,000          |
| 59              |                   |                |                   |                | 0                 | 1,000          |

USE OUTRIGGERS AT ALL TIMES \* AVOID JERKING LOADS  
360° RADIUS \* USE 2 PART LINE FOR LOADS OVER 2,500 LBS.  
**DEDUCT 400 LBS. WITH BASKET ATTACHED**

030304 1075020

## CHASSIS DATA

|                                | H70F                          |
|--------------------------------|-------------------------------|
| Wheelbase (WB)                 | 220" / 559 cm                 |
| Cab to Axle (CA)               | 168" / 427 cm                 |
| Cab to End of Frame (EOF)      | 293" / 744 cm                 |
| Frame Section Modulus          | 13.3 in3 / 120,000 psi        |
| Front Axle Gross Weight Rating | 13,000 lb / 5897 kg           |
| Rear Axle Gross Weight Rating  | 20,000 lb / 9072 kg           |
| Extended Front Frame           | Required for Front Stabilizer |

Chassis data is minimum general requirements-not for engineering.  
Actual dimensions and truck data will depend on truck selection and axle configuration.

## OPTIONS



### MH Outriggers With Shortjacking

Reduce outrigger spread with auxiliary MH outriggers and Elliott's Automatic Safety Rotation Lockout to operate your HiReach in confined spaces.



### Platform Material Handling Jib

Equip your HiReach platform with a material handling jib crane to lift up to 1,000 pounds right from the platform.



### High Capacity Boom Winch

Explore the 5,900 lb or 2,000 lb capacity boom winch options that convert the HiReach into a combination aerial work platform and crane.



### Outrigger Pad Holders

Outrigger pad holders safely store your pads for travel and leave plenty of room for tool boxes.



### Bed Accessories

Mount a wide variety of tool accessories including welders, power washers, and generators on the bed with lines to the platform.



### Platform Accessories

Choose from a list of platform accessories including 110V outlets, welding leads, hydraulic tools, and much more.



### Hydraulic 2-Speed Digger

Dig holes without requiring a second truck by using Elliott's stowable planetary digger system featuring 24", 36", and 48" auger options.

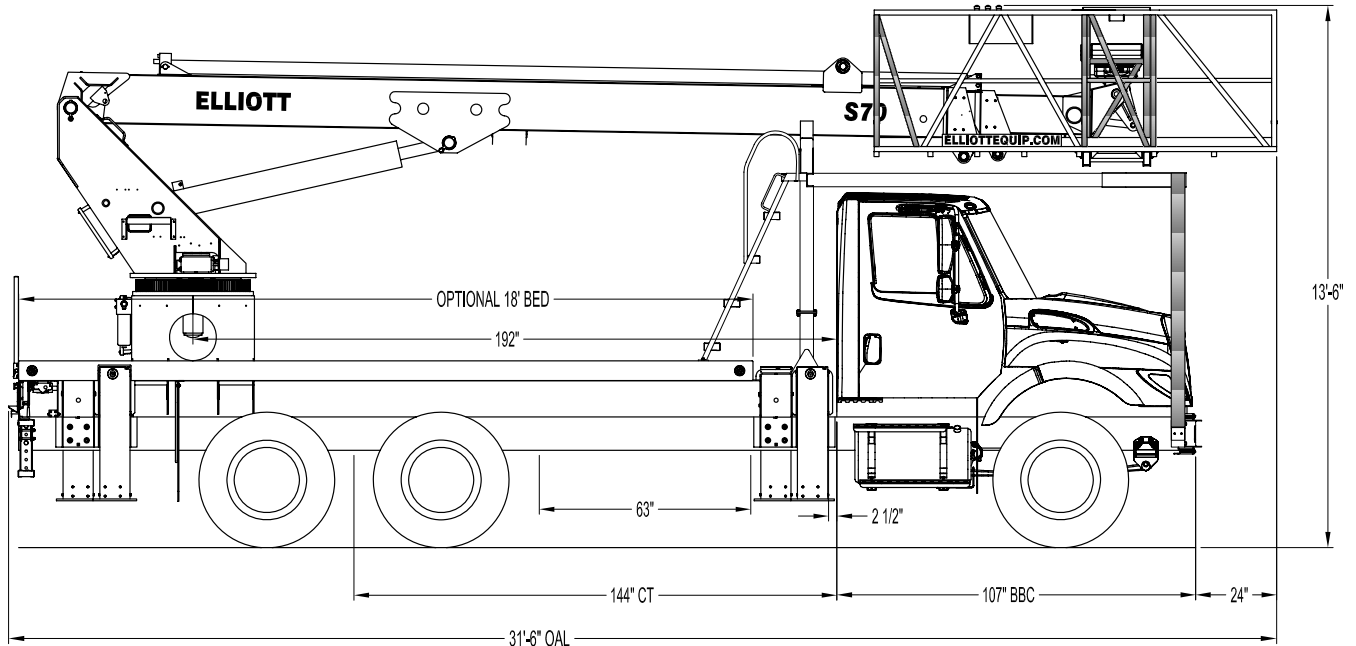


### Line Body

Let us work with you to customize a line body to secure your tools and supplies the the best way for your application.



### S70R SIDE VIEW DIAGRAM



- |  |                          |   |                        |
|--|--------------------------|---|------------------------|
| • <b>Working Height</b>                | 76' / 23,2 m             | • <b>Powered Boom Sections</b>          | 3                      |
| • <b>Working Side Reach</b>            | 71' / 21,6 m             | • <b>Overall Height</b>                 | 13'6" / 4,1 m          |
| • <b>Platform Capacity</b>             | 900 lbs / 408 kg         | • <b>Unit Weight (Bare)</b>             | 21,000 lbs / 9525 kg   |
| • <b>Platform Size</b>                 | 28" x 120" / 71 x 305 cm | • <b>Outrigger Spread Main</b>          | 18' / 5,5 m            |
| • <b>Platform Type</b>                 | SkyWalk™                 | • <b>Outrigger Spread Auxiliary</b>     | 18' / 5,5 m            |
| • <b>Lifting Capacity (Main Winch)</b> | 5,900 lbs / 2676 kg      | • <b>Front Gross Axle Weight Rating</b> | 14,000 lbs / 6350 kg   |
| • <b>Lifting Capacity (Jib Winch)</b>  | 500 lbs / 227 kg         | • <b>Rear Gross Axle Weight Rating</b>  | 40,000 lbs / 18 144 kg |

## TECHNICAL SPECIFICATIONS

**Maximum Platform Height:** 70' ground to platform floor.

**Working Range:** 76' max. height and 71' max. side reach.

**Work Platform:** 28x120" SkyWalk™ oversized work platform with 40" high rails. Equipped with two safety lanyard attachment loops and two safety harnesses and lanyards. Platform capacity 900 lbs.

**Platform Leveling System:** Hydraulic "closed" system consisting of twin platform cylinders interacting with a boom-actuated master cylinder mounted in boom support turret. System provided with factory-set relief valves to compensate for oil expansion or overload during platform leveling operation. Remote releveling controls provided in platform and at ground controls to give precise releveling capability.

**Platform Controls:** Four individual proportional electronic controllers meter pilot-operated, pressure-compensated modulating valves. Boom ground controls are mounted on roadside of turret. Remote controls for boom operations from platform operate from a removable remote control box. Hi/Lo range, start/stop and engine speed toggle controls are also located at platform. Electric remote control cable extends through the electrical slip ring to cable carrier on side of boom to extending boom sections.

**Lower Controls:** Mounted on roadside of turret.

**Outrigger Controls:** Parallel open-center stack valve for lever-operated control of right and left outriggers. The outrigger valves are mounted at the rear, under each corner of the bed with roadside valve controlling roadside outriggers and curbside valve controlling curbside outriggers.

**Outriggers:** Two sets of base mounted

"MH" type out and down outriggers with 18' spread.

**Frame:** One piece, all welded, box-type fabrication with integral outrigger mounts.

**Turret:** Reverse offset turret is one-piece weldment mounted on turret box. Turret rotates on large diameter ball bearing.

**Rotation:** Continuous turret rotation with no stops. Hydraulic motor drives turret through self-locking gear box.

**Boom:** Steel rectangular tube sections. Assembly includes heavy-duty cylinder fittings, pivot pins, and replaceable wear pads.

**Boom Extension:** One 'overslung' extension cylinder.

**Lift:** One single-acting full displacement, long stroke cylinder, provides smooth and stable boom elevation. Holding valve prevent boom from falling in event of hose failure.

**Cylinders:** All cylinders use microhoned cylinder tubing, chrome shafts, top grade packing and protective rod wipers. Cylinder-mounted holding valves provided on all load-holding cylinders.

**Hoses:** All high pressure hoses are wire braid reinforced with a minimum safety factor of 4 to 1.

**Oil Tank Capacity:** 70 gallon mounted to truck frame on roadside.

**Hydraulic System:** Operating pressure approximately 2,500 PSI. System is parallel open center type and is equipped with liquid-filled pressure gauge. Oil is supplied to upper cylinders through hydraulic union in center of turret to cable carrier along side of the boom.

**Pump:** Gear type, direct mount to truck PTO.

**PTO:** Heavy-duty, high-speed. Engaged from cab.

**Cab Equipment:** PTO switch with

indicator lights installed in truck cab. Engine speed control and start/stop installed with control switches in platform remote control box and also located at lower controls. U/L approved 5:BC dry chemical fire extinguisher installed in truck cab.

**Operators Manual & Video:** Two CDs and one printed copy of operation, maintenance, safety and parts manual provided with each unit. Operational and safety video provided at delivery.

**Installation:** Unit installed on truck, painted, system and tank filled with oil, tested, inspected, and ready to operate.

**Standard Paint:** Paint boom and turret red, outriggers red, and bed and boxes black. Top of bed painted with black nonskid surface.

**Bumper:** Bureau of Motor Carrier Safety rear bumper.

**Weight:** Approximately 21,000 lbs. with 18' steel-floor bed less truck.

**Truck Chassis Required:** Approx. 144" C.A. RBM 2,000,000 in-lb. per rail, 14,000 lb. front axle and 54,000 lb. GVWR required. Trucks must have increased cooling, heavy-duty front and rear springs, 12V electrical system with high capacity alternator, cab clearance stop/tail/backup lights, and I.D. lamps. Recommended GVWR is minimum for HiReach with flatbed only. Contact factory when additional equipment is to be added.

**Options:**

2,000 lb, 5,900 lb or 9,000 lb Capacity Main Boom Winch.

500 lb Capacity Platform Jib.

Welder, Air, 110V Lines to Platform.

Custom Toolbox Configurations.

Much More....

Elliott Equipment Company reserves the right to change the specification of any unit at any time without prior notice. This brochure is only a statement of general specifications on the date of this publication. For more detailed info on specific Elliott trucks go to [www.elliottequip.com](http://www.elliottequip.com)

**MAXIMUM LIFTING CAPABILITIES**

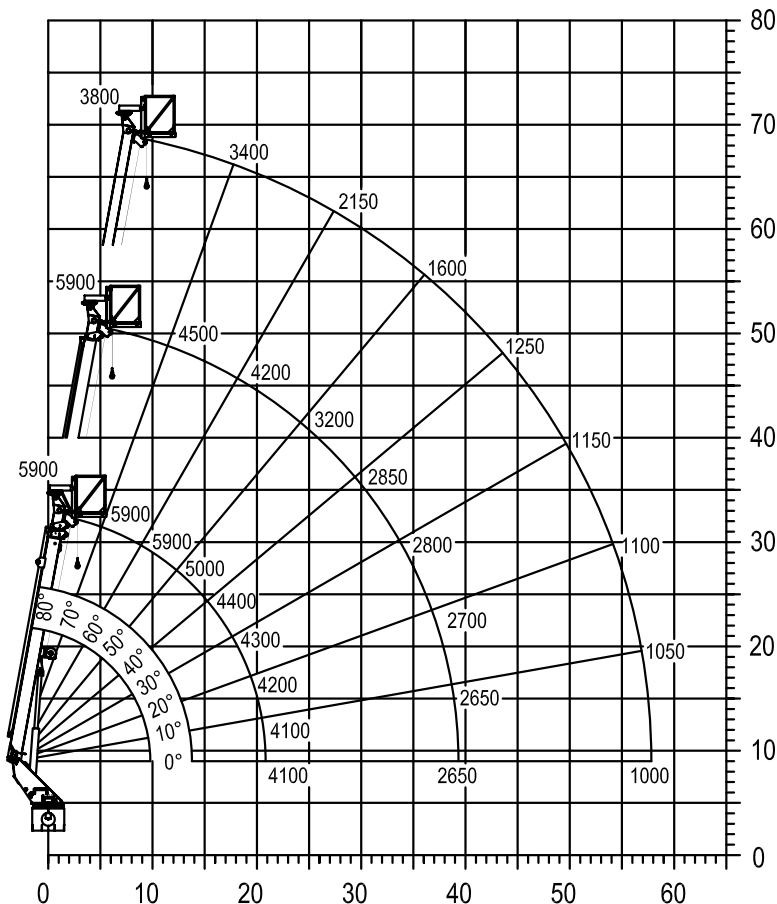
**MAXIMUM WORKING LOADS  
CRANE OPERATION  
MODEL S70**

**WINCH LINE LOAD (POUNDS) WITH PLATFORM ATTACHED (NO JIB)**

USE OUTRIGGERS AT ALL TIMES • AVOID JERKING LOAD

360° RADIUS • 2500 P.S.I. MAX

USE 2 PART LINE FOR LOADS OVER 2500 LBS.



**DEDUCT 350 lbs. WITH JIB INSTALLED IN PLATFORM**

**ELLIOTT**  
EQUIPMENT COMPANY

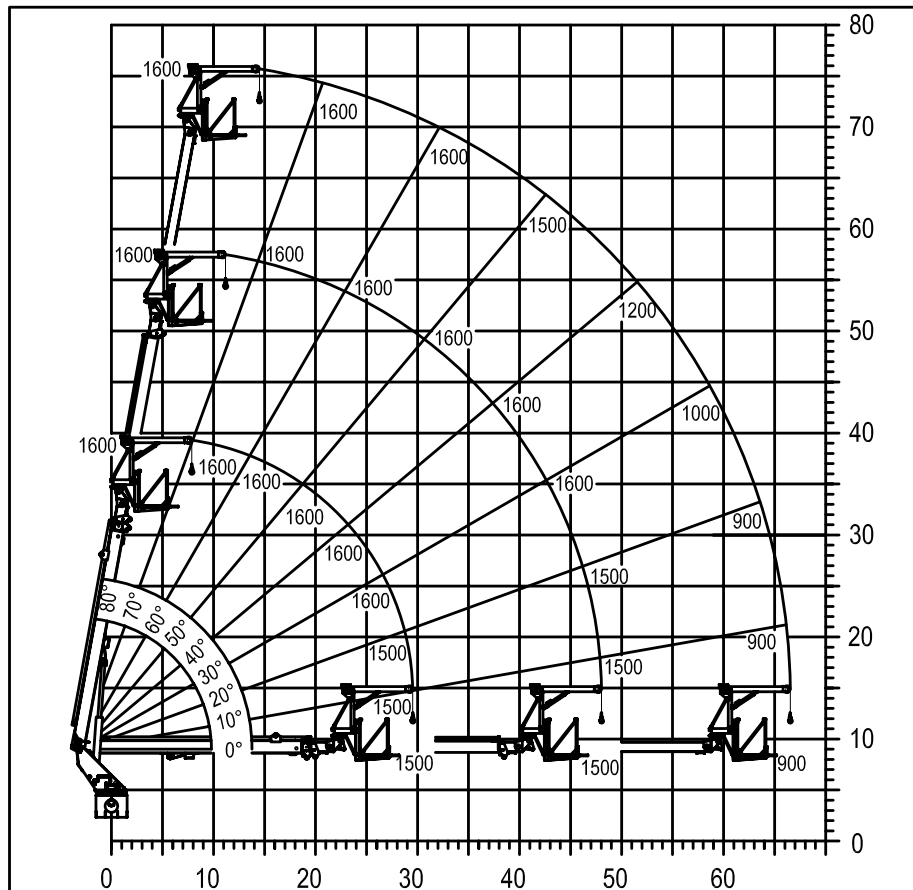
DO NOT PAINT OVER ANY LABELS

030405 1090210

**MAXIMUM JIB LIFTING CAPABILITIES**

**MAXIMUM WORKING LOADS  
PLATFORM JIB OPERATION  
MODEL S70**

WINCH LINE LOAD (POUNDS) WITH PLATFORM ATTACHED (NO JIB)  
USE OUTRIGGERS AT ALL TIMES • AVOID JERKING LOAD



**JIB 1000 LBS. MAX. PERSONNEL 900 LBS. MAX.**

**ELLIOTT**  
EQUIPMENT COMPANY

DO NOT PAINT OVER ANY LABELS

030405 1090710

## CHASSIS DATA

|                                | S70R                   |
|--------------------------------|------------------------|
| Wheelbase (WB)                 | 211" / 536 cm          |
| Cab to Axle (CA)               | 144" / 366 cm          |
| Cab to End of Frame (EOF)      | 244" / 620 cm          |
| Frame Section Modulus          | 16.6 in3 / 120,000 psi |
| Front Axle Gross Weight Rating | 14,000 lb / 6350 kg    |
| Rear Axle Gross Weight Rating  | 40,000 lb / 18 144 kg  |
| Extended Front Frame           | N/A                    |

Chassis data is minimum general requirements-not for engineering.  
Actual dimensions and truck data will depend on truck selection and axle configuration.

## OPTIONS



### Radio Remote Control

Interference protected radio remotes let you get closer to your work and have full control over your machine.



### Platform Material Handling Jib

Equip your HiReach platform with a material handling jib crane to lift up to 1,000 pounds right from the platform.



### High Capacity Boom Winch

Take advantage of the SkyWalk's boom strength by adding a 2,000 lb, 5,900 lb or 9,000 lb capacity boom winch.



### Outrigger Pad Holders

Outrigger pad holders safely store your pads for travel and leave plenty of room for tool boxes.



### Bed Accessories

Mount a wide variety of tool accessories including welders, power washers, and generators on the bed with lines to the platform.



### Platform Accessories

Choose from a list of platform accessories including 110V outlets, welding leads, hydraulic tools, and much more.



### High Clearance Outriggers

Our specialized high clearance outriggers provide additional vertical clearance, making it easy to operate along side guard rails or on uneven terrain.

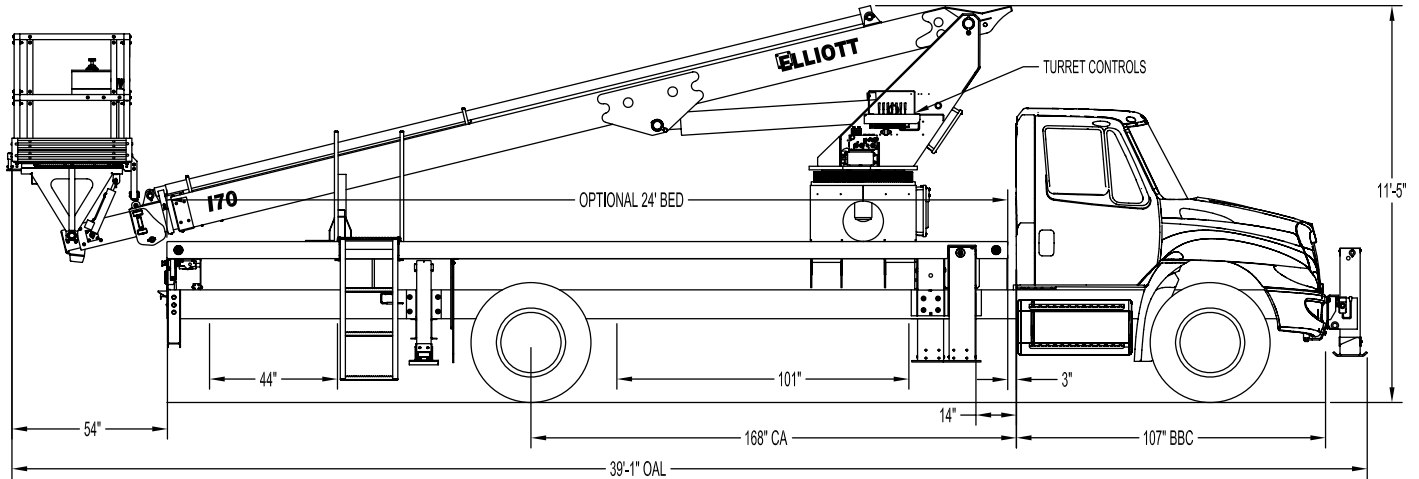


### Line Body

Let us work with you to customize a line body to secure your tools and supplies the best way for your application.



### I70F SIDE VIEW DIAGRAM



- |  |                          |   |                      |
|--|--------------------------|---|----------------------|
| • <b>Working Height</b>                | 75' / 23 m               | • <b>Powered Boom Sections</b>          | 4                    |
| • <b>Working Side Reach</b>            | 61' / 18,6 m             | • <b>Overall Height</b>                 | 11'5" / 3,4 m        |
| • <b>Platform Capacity</b>             | 600 lbs / 272 kg         | • <b>Unit Weight (Bare)</b>             | 17,600 lbs / 7983 kg |
| • <b>Platform Size</b>                 | 40" x 60" / 102 x 152 cm | • <b>Outrigger Spread Main</b>          | 18' / 5,4 m          |
| • <b>Platform Type</b>                 | Insulated Top-Mount      | • <b>Outrigger Spread Auxiliary</b>     | 8' / 2,4 m           |
| • <b>Lifting Capacity (Main Winch)</b> | 3,650 lbs / 1656 kg      | • <b>Front Gross Axle Weight Rating</b> | 13,000 lbs / 5897 kg |
| • <b>Insulation Rating</b>             | 46KV Category C          | • <b>Rear Gross Axle Weight Rating</b>  | 20,000 lbs / 9072 kg |

## TECHNICAL SPECIFICATIONS

**Maximum Platform Height:** 70' ground to platform floor.

**Working Range:** 75' max. height and 61' max. side reach.

**Work Platform:** 40x60" fiberglass top-mount work platform with 40" high rails and a grated fiberglass floor. Equipped with two safety lanyard attachment loops, two safety harnesses, and two lanyards. Platform capacity is 600 lbs.

**Platform Leveling System:** Hydraulic "closed" system consisting of twin platform cylinders interacting with a boom-actuated master cylinder mounted in boom support turret. System provided with factory-set relief valves to compensate for oil expansion or overload during platform leveling operation. Remote releveling controls provided in platform and at ground controls to give precise releveling capability.

**Platform Controls:** Control signals to be transmitted into work platform via plastic fiberoptic "light conduction" from turret control station. Fiberoptic system powered by battery with a backup located in truck cab with 12-volt charger. Single joystick control with finger enable switch in platform to provide boom extension, elevation and rotation controls. Control cable shall extend through the column to the cable carrier and through a fiberglass tube in boom sections. Lower boom controls shall include all general control options including engine speed, start/stop, and upper controls with override.

**Lower Controls:** Mounted on curbside of turret.

**Outrigger Controls:** Parallel open-center stack valve for lever-operated control of right and left outriggers. The outrigger valves are mounted at the rear, under each corner of the bed with roadside valve controlling roadside outriggers and curbside valve controlling curbside outriggers.

Elliott Equipment Company reserves the right to change the specification of any unit at any time without prior notice. This brochure is only a statement of general specifications on the date of this publication. For more detailed info on specific Elliott trucks go to [www.elliottequip.com](http://www.elliottequip.com)

**Outriggers:** "MH" type out-and-down main outriggers with 18' spread. "A" type underslung secondary outriggers with 8' spread. Front stabilizer shall be installed on minimum 20" front frame extensions.

**Frame:** One piece, all welded, box-type fabrication with integral outrigger mounts.

**Turret:** Reverse offset turret is one-piece weldment mounted on turret box. Turret rotates on large diameter ball bearing.

**Rotation:** Continuous turret rotation with no stops. Hydraulic motor drives turret through self-locking gear box.

**Boom:** Steel rectangular tube sections and one fiberglass section 9" high x 7" wide with a 3/4" wall section. Assembly includes heavy-duty cylinder fittings, pivot pins, and replaceable wear pads.

**Boom Extension:** One "double-case" double-acting cylinder extends the final fiberglass section. Main boom section extend via one external cylinder. Fiberglass section to extend first, and retract last.

**Lift:** One double-acting full displacement, long stroke cylinder, provides smooth and stable boom elevation. Holding valve prevent boom from falling in event of hose failure.

**Cylinders:** All cylinders use microhoned cylinder tubing, chrome shafts, top grade packing and protective rod wipers. Cylinder-mounted holding valves provided on all load-holding cylinders.

**Hoses:** All high pressure hoses are wire braid reinforced with a minimum safety factor of 4 to 1.

**Oil Tank Capacity:** 70 gallon mounted to side of sub frame below the bed.

**Hydraulic System:** Operating pressure approximately 2,500 PSI. System is parallel open center type and is equipped with liquid-filled pressure gauge. Oil

is supplied to upper cylinders through hydraulic union in center of turret to cable carrier along side of the boom.

**Pump:** Gear type, direct mount to truck PTO.

**PTO:** Heavy-duty, high-speed. Switch engaged from cab.

**Cab Equipment:** PTO switch with indicator lights installed in truck cab. Engine speed control and start/stop installed with control switches in platform remote control box and also located at lower controls. U/L approved 5:BC dry chemical fire extinguisher installed in truck cab.

**Operators Manual & Video:** Two CDs and one printed copy of operation, maintenance, safety and parts manual provided with each unit. Operational and safety video provided at delivery.

**Installation:** Unit installed on truck, painted, system and tank filled with oil, tested, inspected, and ready to operate.

**Standard Paint:** Paint boom and turret red, outriggers red, and bed and boxes black. Top of bed painted with black nonskid surface.

**Bumper:** Bureau of Motor Carrier Safety rear bumper.

**Weight:** Approximately 17,600 lbs. with 24' steel-floor bed less truck.

**Truck Chassis Required:** Approx. 168" C.A., RBM 1,600,000 in-lb. per rail, 13,000 lb. front axle and 33,000 lb. GVWR required. Trucks must have front frame extensions, increased cooling, heavy-duty front and rear springs, 12V electrical system with high capacity alternator, cab clearance stop/tail/backup lights, and I.D. lamps. Recommended GVWR is minimum for HiReach with flatbed only. Contact factory when additional equipment is to be added.

**MAXIMUM JIB LIFTING CAPABILITIES**

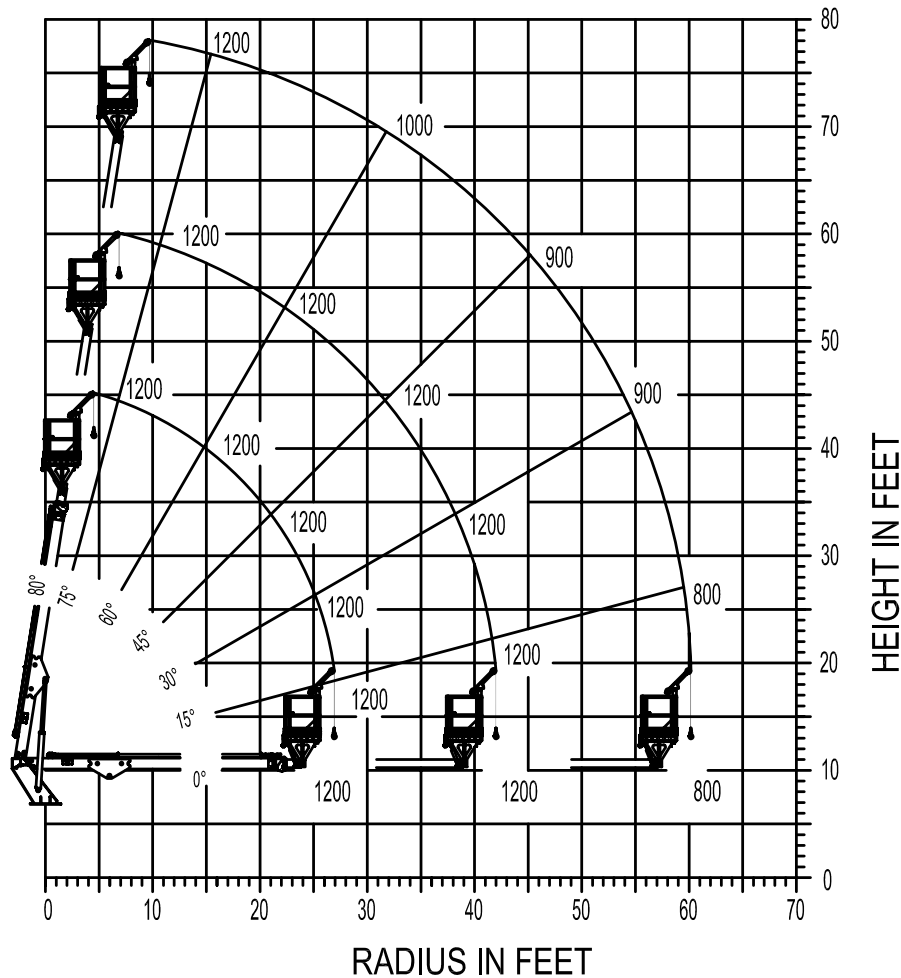
**MAXIMUM WORKING LOADS  
PLATFORM JIB OPERATION**

**MODEL I70**

**TOTAL PLATFORM CAPACITY (JIB LOAD PLUS PERSONNEL)**

USE OUTRIGGERS AT ALL TIMES • AVOID JERKING LOAD

360° BOOM RADIUS



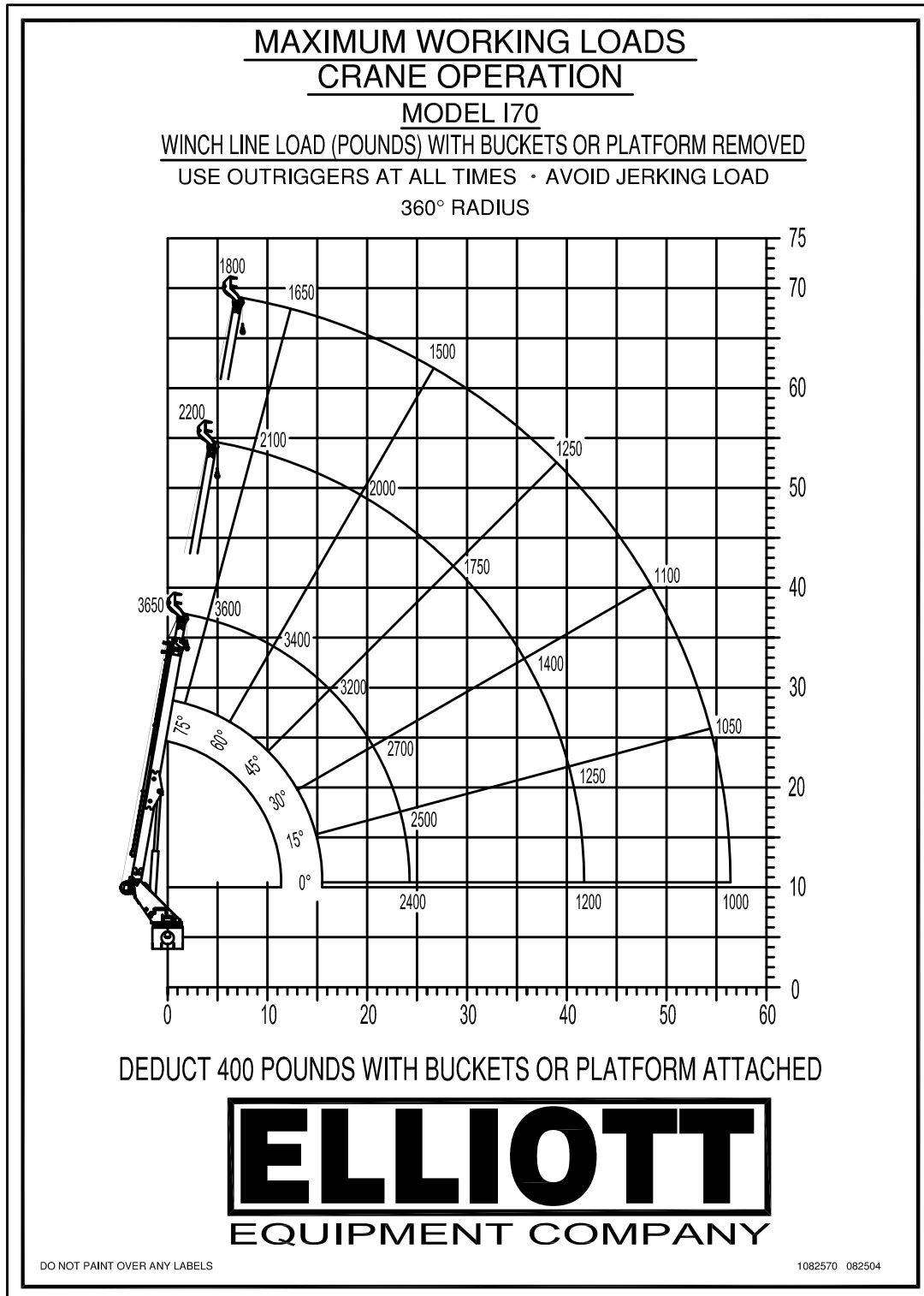
JIB 500 LBS. MAX. PERSONNEL 600 LBS. MAX.



DO NOT PAINT OVER ANY LABELS

070111 1174200

**MAXIMUM LIFTING CAPABILITIES**



## CHASSIS DATA

|                                | 170F                          |
|--------------------------------|-------------------------------|
| Wheelbase (WB)                 | 235" / 597 cm                 |
| Cab to Axle (CA)               | 168" / 427 cm                 |
| Cab to End of Frame (EOF)      | 293" / 744 cm                 |
| Frame Section Modulus          | 13.3 in3 / 120,000 psi        |
| Front Axle Gross Weight Rating | 13,000 lb / 5897 kg           |
| Rear Axle Gross Weight Rating  | 20,000 lb / 9072 kg           |
| Extended Front Frame           | Required for Front Stabilizer |

Chassis data is minimum general requirements-not for engineering.  
Actual dimensions and truck data will depend on truck selection and axle configuration.

## OPTIONS



### Radio Remote Control

Interference protected radio remotes hard-wired to the platform let you get closer to your work and have full control over your machine.



### Material Handling Jib

Equip your HiReach platform with a material handling jib crane to handle up to 500 pounds from within arm's reach..



### MH Outriggers With Shortjacking

Reduce outrigger spread with MH secondary outriggers and Elliott's Automatic Safety Rotation Lockout to operate your HiReach in confined spaces.



### Outrigger Pad Holders

Outrigger pad holders safely store your pads for travel and leave plenty of room for tool boxes.



### Bed Accessories

Mount a wide variety of tool accessories including welders, power washers, and generators on the bed with lines to the platform.



### Platform Accessories

Choose from a list of platform accessories including hydraulic accessory lines and a 3/8" air line to power tools from within the platform.



### Outrigger Extensions

Our pin-on outrigger extensions give you extra clearance for work on hills and around guardrails.

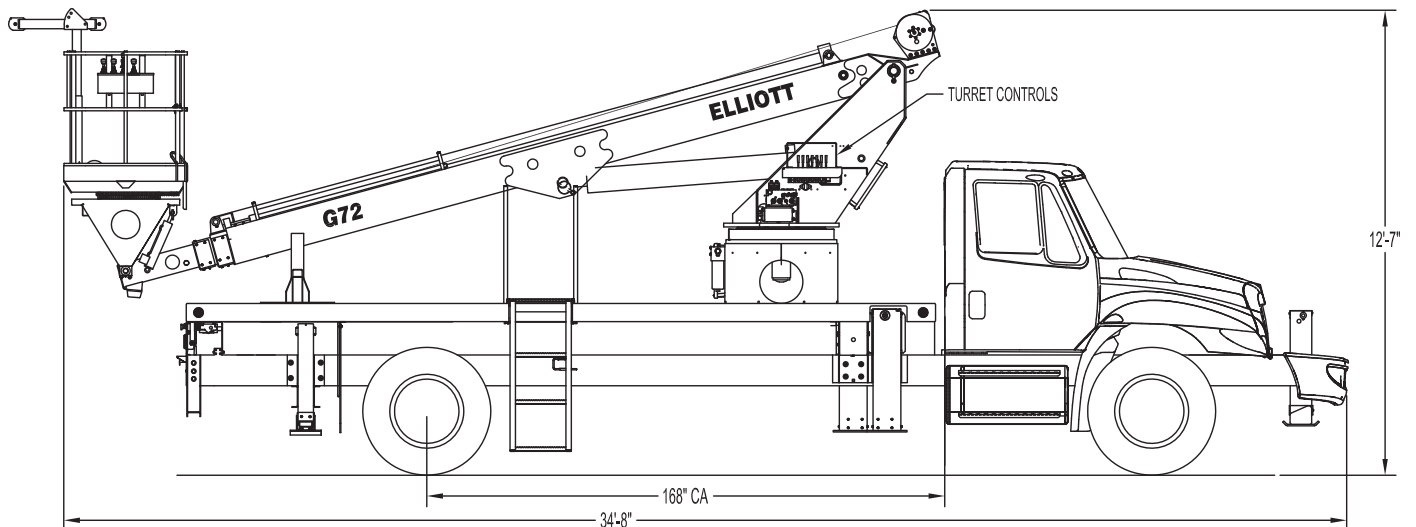


### Line Body

Let us work with you to customize a line body to secure your tools and supplies the the best way for your application.



### G72F SIDE VIEW DIAGRAM



- |  |                          |   |                      |
|--|--------------------------|---|----------------------|
| • <b>Working Height</b>                | 77' / 23,5 m             | • <b>Powered Boom Sections</b>          | 4                    |
| • <b>Working Side Reach</b>            | 63' / 19,2 m             | • <b>Overall Height</b>                 | 12'7" / 3,8 m        |
| • <b>Platform Capacity</b>             | 600 lbs / 272 kg         | • <b>Unit Weight (Bare)</b>             | 17,200 lbs / 7802 kg |
| • <b>Platform Size</b>                 | 40" x 60" / 102 x 152 cm | • <b>Outrigger Spread Main</b>          | 18' / 5,5 m          |
| • <b>Platform Type</b>                 | Top-Mount                | • <b>Outrigger Spread Auxiliary</b>     | 8' / 2,4 m           |
| • <b>Lifting Capacity (Main Winch)</b> | 5,900 lbs / 2676 kg      | • <b>Front Gross Axle Weight Rating</b> | 13,000 lbs / 5897 kg |
| • <b>Jib Winch</b>                     | 1,000 lbs / 454 kg       | • <b>Rear Gross Axle Weight Rating</b>  | 20,000 lbs / 9072 kg |

## TECHNICAL SPECIFICATIONS

**Maximum Platform Height:** 72' ground to platform floor.

**Working Range:** 77' max. working height and 63' max. side reach.

**Work Platform:** 40x60" Top-Mount work platform with 40" high rails. Equipped with two safety lanyard attachment loops and two safety harnesses and 72" lanyards. Platform capacity 600 lbs.

**Platform Leveling System:** Hydraulic "closed" system consisting of twin platform cylinders interacting with a boom-actuated master cylinder mounted in boom support turret. System provided with factory-set relief valves to compensate for oil expansion or overload during platform leveling operation. Remote releveling controls provided in platform and at ground controls to give precise releveling capability.

**Platform Controls:** Three individual proportional electronic controllers meter pilot-operated, pressure-compensated modulating valves. Boom ground controls are mounted on curbside of turret. Remote controls for boom operations from platform operate from a removable remote control box. Hi/Lo range, start/stop and engine speed toggle controls are also located at platform. Electric remote control cable extends through the electrical slip ring to cable carrier on side of boom to extending boom sections.

**Lower Controls:** Mounted on curbside of turret.

**Outrigger Controls:** Parallel open-center stack valve for lever-operated control of right and left outriggers. The outrigger valves are mounted at the rear, under each corner of the bed with roadside valve controlling roadside outriggers and curbside valve controlling curbside outriggers.

**Outriggers:** One set of main "MH"

type out-and-down outriggers with 18' spread behind the cab. Secondary "A" type underslung outriggers at the rear with an 8' spread. Front stabilizer required for 360 degree stability.

**Frame:** One piece, all welded, box-type fabrication with integral outrigger mounts.

**Turret:** Reverse offset turret is one-piece weldment mounted on turret box. Turret rotates on large diameter ball bearing.

**Rotation:** Continuous turret rotation with no stops. Hydraulic motor drives turret through self-locking gear box.

**Boom:** Steel rectangular tube sections. Assembly includes heavy-duty cylinder fittings, pivot pins, and replaceable wear pads.

**Boom Extension:** Two opposing "piggyback" extension cylinders extend the boom sections.

**Lift:** One single-acting full displacement, long stroke cylinder, provides smooth and stable boom elevation. Holding valve prevent boom from falling in event of hose failure.

**Cylinders:** All cylinders use microhoned cylinder tubing, chrome shafts, top grade packing and protective rod wipers. Cylinder-mounted holding valves provided on all load-holding cylinders.

**Hoses:** All high pressure hoses are wire braid reinforced with a minimum safety factor of 4 to 1.

**Oil Tank Capacity:** 35 gallon mounted to truck frame on roadside.

**Hydraulic System:** Operating pressure approximately 2,500 PSI. System is parallel open center type and is equipped with liquid-filled pressure gauge. Oil is supplied to upper cylinders through hydraulic union in center of turret to cable carrier along side of the boom.

**Pump:** Gear type, direct mount to truck PTO.

**PTO:** Heavy-duty, high-speed.

**Cab Equipment:** PTO indicator lights installed in truck cab. Engine speed control and start/stop installed with control switches in platform remote control box and also located at lower controls. U/L approved 5:BC dry chemical fire extinguisher installed in truck cab.

**Operators Manual & Video:** Two CDs and one printed copy of operation, maintenance, safety and parts manual provided with each unit. Operational and safety video provided at delivery.

**Installation:** Unit installed on truck, painted, system and tank filled with oil, tested, inspected, and ready to operate.

**Standard Paint:** Paint boom and turret red, outriggers red, and bed and boxes black. Top of bed painted with black nonskid surface.

**Bumper:** Bureau of Motor Carrier Safety rear bumper.

**Weight:** Approximately 17,200 lbs. with 20' steel-floor bed less truck.

**Truck Chassis Required:** Approx. 156" C.A. RBM 1,600,000 in-lb. per rail, 13,000 lb. front axle and 33,000 lb. GVWR required. Trucks must have increased cooling, heavy-duty front and rear springs, 12V electrical system with high capacity alternator, cab clearance stop/tail/backup lights, and I.D. lamps. Extended front frame rails. Recommended GVWR is minimum for HiReach with flatbed only. Contact factory when additional equipment is to be added.

**Options:**

5,900 lb Capacity Boom Winch

1,000 lb Capacity Platform Jib

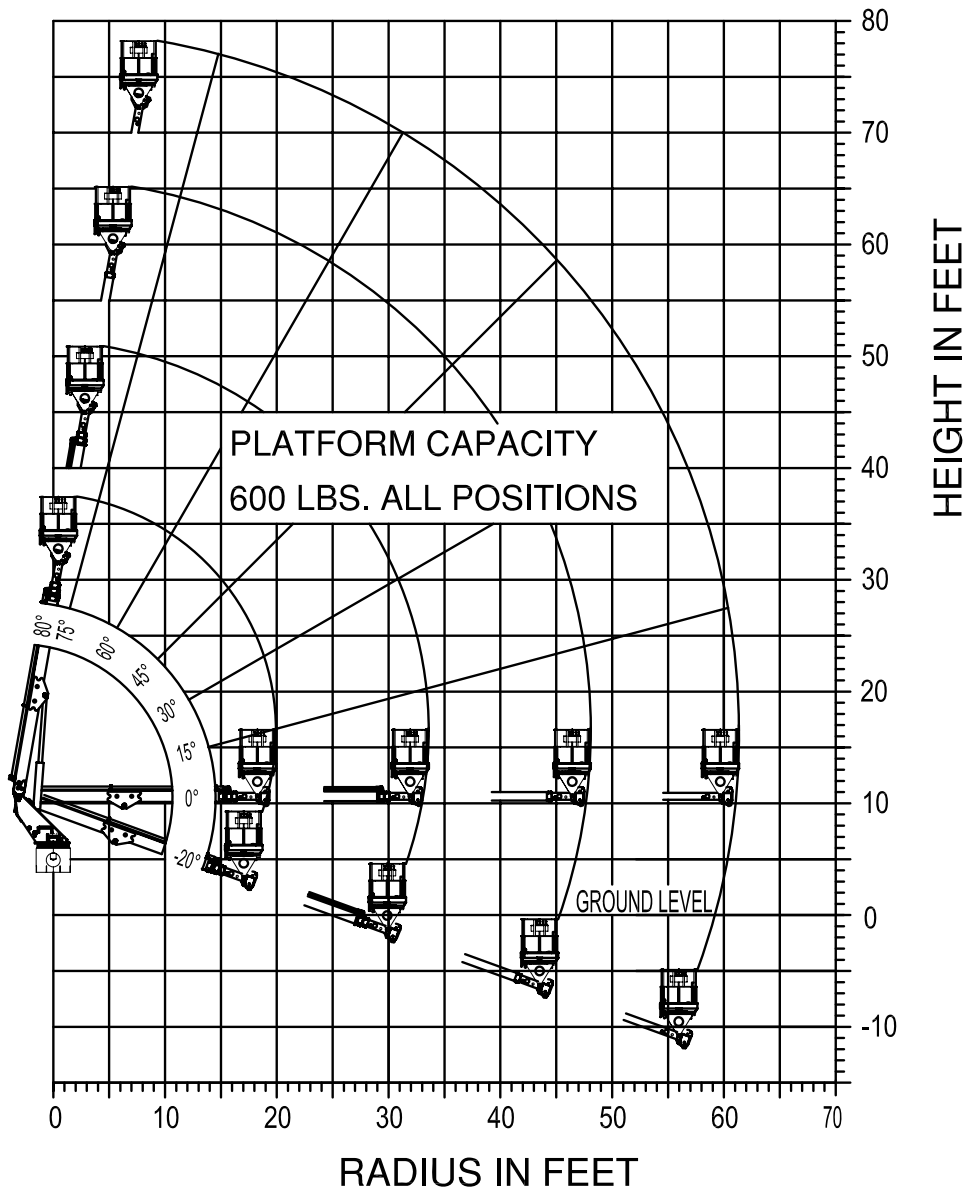
Welder, Air, and 110V Lines to Platform.

Much More....

Elliott Equipment Company reserves the right to change the specification of any unit at any time without prior notice. This brochure is only a statement of general specifications on the date of this publication. For more detailed info on specific Elliott trucks go to [www.elliottequip.com](http://www.elliottequip.com)

MAXIMUM WORKING RANGE

PLATFORM WORKING RANGE  
MODEL G72



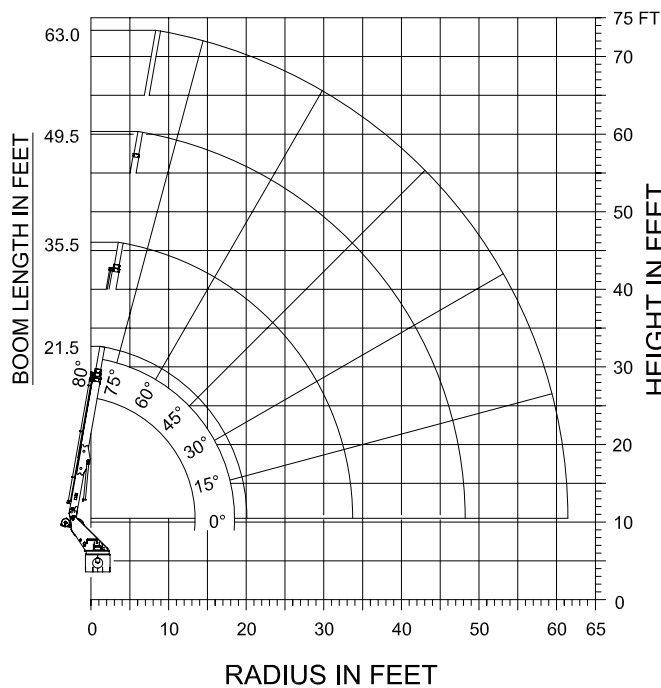
**ELLIOTT**  
EQUIPMENT COMPANY

1192820 042913

**MAXIMUM LIFTING CAPABILITIES**



**MODEL G72**



DO NOT PAINT OVER ANY LABELS

**MAXIMUM WORKING LOADS  
CRANE OPERATION**

WINCH LINE LOAD (POUNDS) ON BOOM  
SHEAVE WITH PLATFORM REMOVED.

| RADIUS (FT.) | 21.5' BOOM LENGTH |             | 35.5' BOOM LENGTH |             |
|--------------|-------------------|-------------|-------------------|-------------|
|              | ANGLE (DEG.)      | LOAD (LBS.) | ANGLE (DEG.)      | LOAD (LBS.) |
| 2            | 80                | 5,900       |                   |             |
| 4            | 75                | 5,900       |                   |             |
| 5            | 73                | 5,900       | 80                | 2,500       |
| 7            | 65                | 5,900       | 75                | 2,500       |
| 9            | 60                | 5,900       | 71                | 2,500       |
| 14           | 45                | 5,900       | 63                | 2,500       |
| 16           | 35                | 5,900       | 60                | 2,500       |
| 17           | 30                | 5,900       | 57                | 2,500       |
| 19           | 15                | 5,900       | 53                | 2,500       |
| 20           | 0                 | 5,900       | 52                | 2,500       |
| 23           |                   |             | 45                | 2,500       |
| 29           |                   |             | 30                | 2,500       |
| 32           |                   |             | 15                | 2,500       |
| 33           |                   |             | 0                 | 2,500       |

| RADIUS (FT.) | 49.5' BOOM LENGTH |             | 63.0' BOOM LENGTH |             |
|--------------|-------------------|-------------|-------------------|-------------|
|              | ANGLE (DEG.)      | LOAD (LBS.) | ANGLE (DEG.)      | LOAD (LBS.) |
| 8            | 80                | 1,800       |                   |             |
| 10           | 77                | 1,800       | 80                | 1,800       |
| 11           | 75                | 1,800       | 78                | 1,800       |
| 14           | 71                | 1,700       | 75                | 1,800       |
| 23           | 60                | 1,700       | 66                | 1,700       |
| 30           | 51                | 1,400       | 60                | 1,700       |
| 33           | 45                | 1,300       | 56                | 1,500       |
| 42           | 30                | 1,200       | 46                | 1,300       |
| 43           | 26                | 1,100       | 45                | 1,300       |
| 46           | 15                | 1,100       | 40                | 1,200       |
| 48           | 0                 | 1,100       | 38                | 1,200       |
| 53           |                   |             | 30                | 1,200       |
| 59           |                   |             | 15                | 1,100       |
| 61           |                   |             | 0                 | 1,100       |

USE OUTRIGGERS AT ALL TIMES \* AVOID JERKING LOADS 360°

\* USE 2 PART LINE FOR LOADS OVER 2,500 LBS.

**DEDUCT 500 LBS. WITH PLATFORM ATTACHED**

1133430 020803

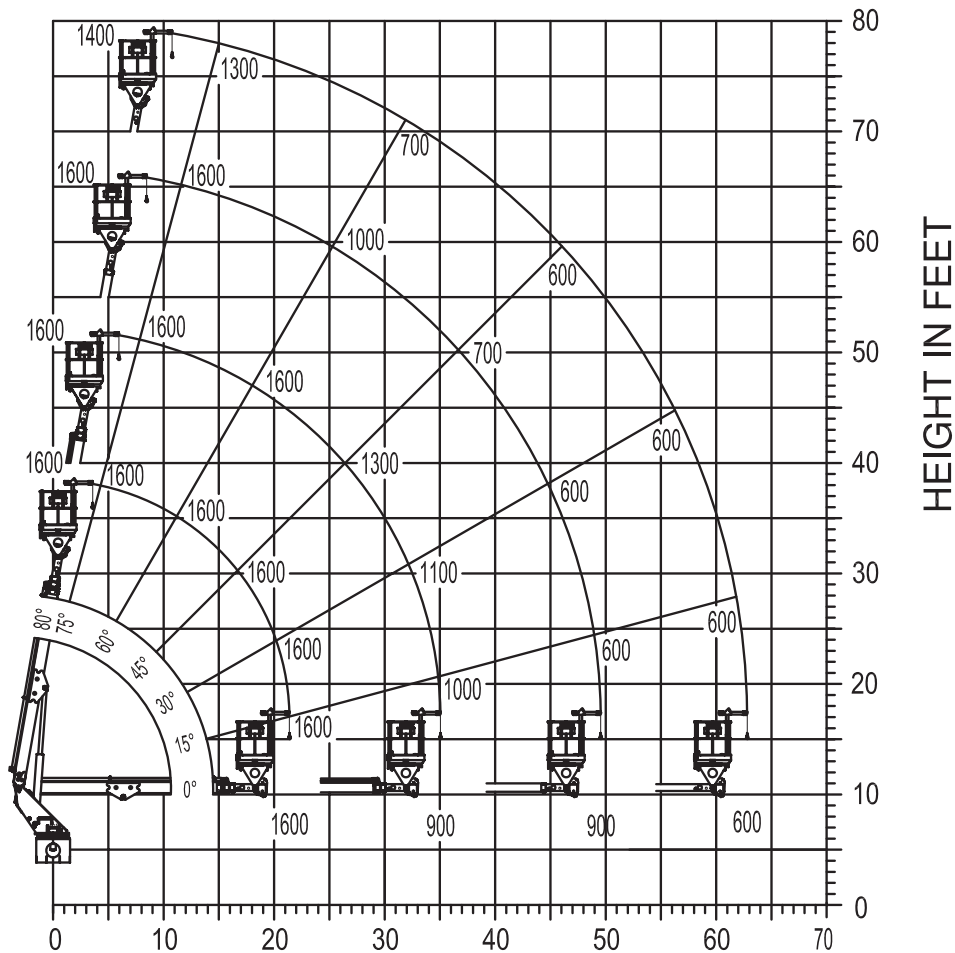
**MAXIMUM JIB LIFTING CAPABILITIES**

**MAXIMUM WORKING LOADS  
1,000 LBS. PLATFORM JIB OPERATION**

**MODEL G72**

**TOTAL PLATFORM CAPACITY (JIB LOAD PLUS PERSONNEL)**

USE OUTRIGGERS AT ALL TIMES • AVOID JERKING LOAD  
360° BOOM RADIUS



**RADIUS IN FEET**  
JIB 1,000 LBS. MAX. PERSONNEL 600 LBS. MAX.



**CHASSIS DATA**

|                                | G72F                          |
|--------------------------------|-------------------------------|
| Wheelbase (WB)                 | 222" / 564 cm                 |
| Cab to Axle (CA)               | 168" / 427 cm                 |
| Cab to End of Frame (EOF)      | 256" / 650 cm                 |
| Frame Section Modulus          | 13.3 in3 / 120,000 psi        |
| Front Axle Gross Weight Rating | 13,000 lb / 5896 kg           |
| Rear Axle Gross Weight Rating  | 20,000 lb / 9072 kg           |
| Extended Front Frame           | Required for Front Stabilizer |

Chassis data is minimum general requirements-not for engineering.  
Actual dimensions and truck data will depend on truck selection and axle configuration.

**OPTIONS**



**MH Outriggers With Shortjacking**

Reduce outrigger spread with MH outriggers behind the cab and Elliott's automatic safety rotation lockout to operate your HiReach in confined spaces.



**Material Handling Jib**

Equip your HiReach platform with a material handling jib crane to handle up to 1,000 pounds.



**Boom-Mounted Winch**

Take advantage of the 5,900 lb capacity 2 speed hydraulic winch with 1/2" cable.



**Outrigger Pad Holders**

Outrigger pad holders safely store your pads for travel and leave plenty of room for tool boxes.



**Bed Accessories**

Mount a wide variety of tool accessories including welders, power washers, and generators on the bed with lines to the platform.



**Platform Accessories**

Choose from a list of platform accessories including 110V outlets, welding leads, hydraulic tools, and much more.



**Outrigger Extensions**

Our pin-on outrigger extensions give you extra clearance for work on hills and around guardrails.

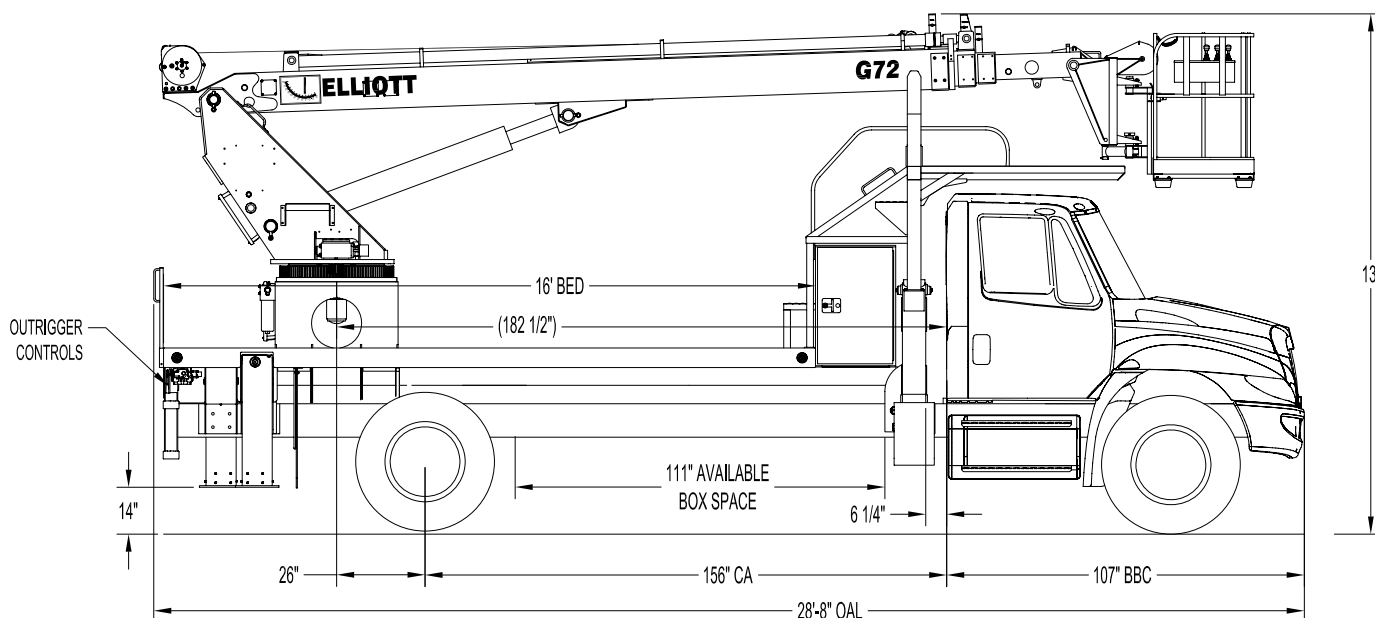


**Line Body**

Let us work with you to customize a line body to secure your tools and supplies the the best way for your application.



### G72R SIDE VIEW DIAGRAM



- **Working Height** 73' / 22,3 m
- **Working Side Reach** 66' / 20,1 m
- **Platform Capacity** 500 lbs / 227 kg
- **Platform Size** 40" x 60" / 102 x 152 cm
- **Platform Type** EZR
- **Lifting Capacity (Main Winch)** 5,900 lbs / 2676 kg
- **Jib Winch** 500 lbs / 227 kg

- **Powered Boom Sections** 4
- **Overall Height** 13' / 4 m
- **Unit Weight (Bare)** 18,000 lbs / 8165 kg
- **Outrigger Spread Main** 18' / 5,5m
- **Outrigger Spread Auxiliary** 12'6" / 3,8m
- **Front Gross Axle Weight Rating** 13,000 lbs / 5897 kg
- **Rear Gross Axle Weight Rating** 20,000 lbs / 9072 kg

## TECHNICAL SPECIFICATIONS

**Maximum Platform Height:** 67' ground to platform floor.

**Working Range:** 73' max. height and 66' max. side reach.

**Work Platform:** 40x60" EZR end-hung work platform with 40" high rails. Equipped with two safety lanyard attachment loops and two safety harnesses and 72" lanyards. Platform capacity 500 lbs.

**Platform Leveling System:** Hydraulic "closed" system consisting of twin platform cylinders interacting with a boom-actuated master cylinder mounted in boom support turret. System provided with factory-set relief valves to compensate for oil expansion or overload during platform leveling operation. Remote releveling controls provided in platform and at ground controls to give precise releveling capability.

**Platform Controls:** Three individual proportional electronic controllers meter pilot-operated, pressure-compensated modulating valves. Remote controls for boom operations from platform operate from a removable remote control box. Hi/Lo range, start/stop and engine speed toggle controls are also located at platform. Electric remote control cable extends through the electrical slip ring to cable carrier on side of boom to extending boom sections.

**Lower Controls:** Mounted on roadside of turret.

**Outrigger Controls:** Parallel open-center stack valve for lever-operated control of right and left outriggers. The outrigger valves are mounted at the rear, under each corner of the bed with roadside valve controlling roadside outriggers and curbside valve controlling curbside outriggers.

**Outriggers:** "MH" type out and down main outriggers with 18' spread. "A" type auxiliary outriggers with 12' spread

behind cab.

**Frame:** One piece, all welded, box-type fabrication with integral outrigger mounts.

**Turret:** Reverse offset turret is one-piece weldment mounted on turret box. Turret rotates on large diameter ball bearing.

**Rotation:** Continuous turret rotation with no stops. Hydraulic motor drives turret through self-locking gear box.

**Boom:** Steel rectangular tube sections. Assembly includes heavy-duty cylinder fittings, pivot pins, and replaceable wear pads.

**Boom Extension:** Two opposing "piggyback" extension cylinders and one overslung cylinder extend the boom sections.

**Lift:** One single-acting full displacement, long stroke cylinder, provides smooth and stable boom elevation. Holding valve prevents boom from falling in event of hose failure.

**Cylinders:** All cylinders use microhoned cylinder tubing, chrome shafts, top grade packing and protective rod wipers. Cylinder-mounted holding valves provided on all load-holding cylinders.

**Hoses:** All high pressure hoses are wire braid reinforced with a minimum safety factor of 4 to 1.

**Oil Tank Capacity:** 35 gallon mounted to truck frame on roadside.

**Hydraulic System:** Operating pressure is 2,500 PSI. System is parallel open center type and is equipped with liquid-filled pressure gauge. Oil is supplied to upper cylinders through hydraulic union in center of turret to cable carrier along side of the boom.

**Pump:** Gear type, direct mount to truck PTO.

**PTO:** Heavy-duty, high-speed. Switch engaged from cab.

**Cab Equipment:** PTO cable or switch with indicator lights installed in truck cab. Engine speed control and start/stop installed with control switches in platform remote control box and also located at lower controls. U/L approved 5:BC dry chemical fire extinguisher installed in truck cab.

**Operators Manual & Video:** Two CDs and one printed copy of operation, maintenance, safety and parts manual provided with each unit. Operational and safety video provided at delivery.

**Installation:** Unit installed on truck, painted, system and tank filled with oil, tested, inspected, and ready to operate.

**Standard Paint:** Paint boom and turret red, outriggers red, and bed and boxes black. Top of steel bed painted with black nonskid surface.

**Bumper:** Bureau of Motor Carrier Safety rear bumper.

**Weight:** Approximately 18,000 lbs. with 18' steel-floor bed less truck.

**Truck Chassis Required:** Approx. 156" C.A. RBM 1,600,000 in-lb. per rail, 13,000 lb. front axle and 33,000 lb. GVWR required. Trucks must have increased cooling, heavy-duty front and rear springs, 12V electrical system with high capacity alternator, cab clearance stop/tail/backup lights, and I.D. lamps. Recommended GVWR is minimum for HiReach with flatbed only. Contact factory when additional equipment is to be added.

**Options:**

5,900 lb or 2,000 lb Capacity Boom Winch.

500 lb Capacity Platform Material Handling Jib.

Welder, Air, and 110V Lines to Platform.

Cab Guard With Platform Access.

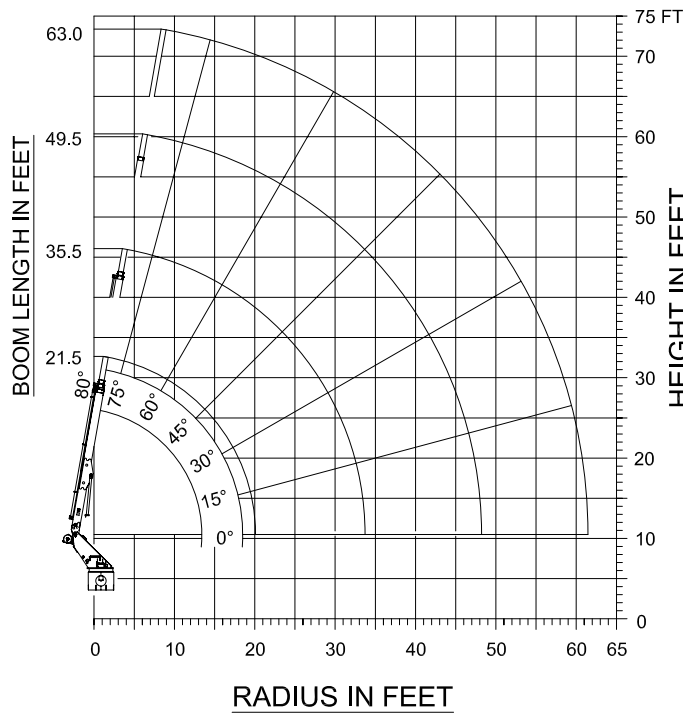
Much More....

Elliott Equipment Company reserves the right to change the specification of any unit at any time without prior notice. This brochure is only a statement of general specifications on the date of this publication. For more detailed info on specific Elliott trucks go to [www.elliottequip.com](http://www.elliottequip.com)

**MAXIMUM LIFTING AND RANGE CAPABILITIES**



**MODEL G72**



DO NOT PAINT OVER ANY LABELS

**MAXIMUM WORKING LOADS  
CRANE OPERATION**

WINCH LINE LOAD (POUNDS) ON BOOM  
SHEAVE WITH PLATFORM REMOVED.

| RADIUS (FT.) | 21.5' BOOM LENGTH |             | 35.5' BOOM LENGTH |             |
|--------------|-------------------|-------------|-------------------|-------------|
|              | ANGLE (DEG.)      | LOAD (LBS.) | ANGLE (DEG.)      | LOAD (LBS.) |
| 2            | 80                | 5,900       |                   |             |
| 4            | 75                | 5,900       |                   |             |
| 5            | 73                | 5,900       | 80                | 2,500       |
| 7            | 65                | 5,900       | 75                | 2,500       |
| 9            | 60                | 5,900       | 71                | 2,500       |
| 14           | 45                | 5,900       | 63                | 2,500       |
| 16           | 35                | 5,900       | 60                | 2,500       |
| 17           | 30                | 5,900       | 57                | 2,500       |
| 19           | 15                | 5,900       | 53                | 2,500       |
| 20           | 0                 | 5,900       | 52                | 2,500       |
| 23           |                   |             | 45                | 2,500       |
| 29           |                   |             | 30                | 2,500       |
| 32           |                   |             | 15                | 2,500       |
| 33           |                   |             | 0                 | 2,500       |

| RADIUS (FT.) | 49.5' BOOM LENGTH |             | 63.0' BOOM LENGTH |             |
|--------------|-------------------|-------------|-------------------|-------------|
|              | ANGLE (DEG.)      | LOAD (LBS.) | ANGLE (DEG.)      | LOAD (LBS.) |
| 8            | 80                | 1,800       |                   |             |
| 10           | 77                | 1,800       | 80                | 1,800       |
| 11           | 75                | 1,800       | 78                | 1,800       |
| 14           | 71                | 1,700       | 75                | 1,800       |
| 23           | 60                | 1,700       | 66                | 1,700       |
| 30           | 51                | 1,400       | 60                | 1,700       |
| 33           | 45                | 1,300       | 56                | 1,500       |
| 42           | 30                | 1,200       | 46                | 1,300       |
| 43           | 26                | 1,100       | 45                | 1,300       |
| 46           | 15                | 1,100       | 40                | 1,200       |
| 48           | 0                 | 1,100       | 38                | 1,200       |
| 53           |                   |             | 30                | 1,200       |
| 59           |                   |             | 15                | 1,100       |
| 61           |                   |             | 0                 | 1,100       |

USE OUTRIGGERS AT ALL TIMES \* AVOID JERKING LOADS 360°

\* USE 2 PART LINE FOR LOADS OVER 2,500 LBS.

**DEDUCT 500 LBS. WITH PLATFORM ATTACHED**

1133430 020803

**CHASSIS DATA**

|                                | G72R                   |
|--------------------------------|------------------------|
| Wheelbase (WB)                 | 204" / 518 cm          |
| Cab to Axle (CA)               | 156" / 396 cm          |
| Cab to End of Frame (EOF)      | 240" / 610 cm          |
| Frame Section Modulus          | 13.3 in3 / 120,000 psi |
| Front Axle Gross Weight Rating | 13,000 lb / 5897 kg    |
| Rear Axle Gross Weight Rating  | 20,000 lb / 9072 kg    |
| Extended Front Frame           | N/A                    |

Chassis data is minimum general requirements-not for engineering.  
Actual dimensions and truck data will depend on truck selection and axle configuration.

**OPTIONS**



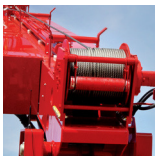
**MH Outriggers With Shortjacking**

Reduce outrigger spread with MH outriggers behind the cab and Elliott's automatic safety rotation lockout to operate your HiReach in confined spaces.



**Platform Material Handling Jib**

Equip your HiReach platform with a material handling jib crane to lift up to 500 pounds right from the platform.



**High Capacity Boom Winch**

Explore the 5,900 lb or 2,000 lb capacity boom winch options that convert the HiReach into a combination aerial work platform and crane.



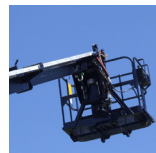
**Outrigger Pad Holders**

Outrigger pad holders safely store your pads for travel and leave plenty of room for tool boxes.



**Bed Accessories**

Mount a wide variety of tool accessories including welders, power washers, and generators on the bed with lines to the platform.



**Platform Accessories**

Choose from a list of platform accessories including 110V outlets, welding leads, hydraulic tools, and much more.



**High Clearance Outriggers**

Our specialized high clearance outriggers provide additional vertical clearance, making it easy to operate along side guard rails or on uneven terrain.

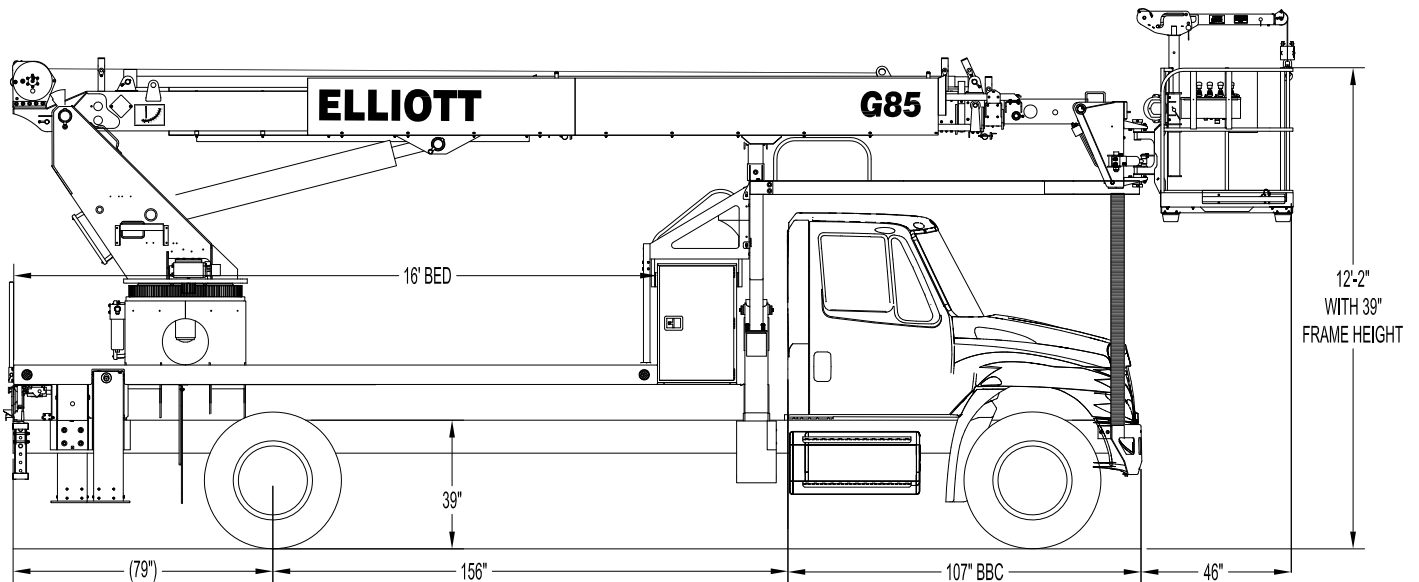


**Line Body**

Let us work with you to customize a line body to secure your tools and supplies the the best way for your application.



### G85R SIDE VIEW DIAGRAM



- **Working Height** 87' / 26,5 m
- **Working Side Reach** 61' / 18,6 m
- **Platform Capacity** 500 lbs / 227 kg
- **Platform Size** 40" x 60" / 102 x 152 cm
- **Platform Type** EZR Removable
- **Lifting Capacity (Main Winch)** 5,900 lbs / 2676 kg
- **Jib Winch** 500 lbs / 227 kg

- **Powered Boom Sections** 4
- **Overall Height** 12'2" / 3,7m
- **Unit Weight (Bare)** 18,000 lbs / 8,165 kg
- **Outrigger Spread Main** 18' / 5,5m
- **Outrigger Spread Auxiliary** 12'6" / 3,8m
- **Front Gross Axle Weight Rating** 13,000 lbs / 5896 kg
- **Rear Gross Axle Weight Rating** 20,000 lbs / 9072 kg

**TECHNICAL SPECIFICATIONS**

**Maximum Platform Height:** 80' ground to platform floor.

**Working Range:** 87' max. working height and 61' max. side reach.

**Work Platform:** 40" x 60" EZR end-hung work platform with 40" high rails. Equipped with two safety lanyard attachment loops and two safety harnesses and 72" lanyards. Platform capacity 500 lbs.

**Platform Leveling System:** Hydraulic "closed" system consisting of twin platform cylinders interacting with a boom-actuated master cylinder mounted in boom support turret. System provided with factory-set relief valves to compensate for oil expansion or overload during platform leveling operation. Remote releveling controls provided in platform and at ground controls to give precise releveling capability.

**Platform Controls:** Three individual proportional electronic controllers meter pilot-operated, pressure-compensated modulating valves. Remote controls for boom operations from platform operate from a removable remote control box. Hi/Lo range, start/stop and engine speed toggle controls are also located at platform. Electric remote control cable extends through the electrical slip ring to cable carrier on side of boom to extending boom sections.

**Lower Controls:** Mounted on roadside of turret.

**Outrigger Controls:** Parallel open-center stack valve for lever-operated control of right and left outriggers. The outrigger valves are mounted at the rear, under each corner of the bed with roadside valve controlling roadside outriggers and curbside valve controlling curbside outriggers.

**Outriggers:** "A" type auxiliary outriggers with 12'6" spread. "MH" type out and down main outriggers with 18'

spread.

**Frame:** One piece, all welded, box-type fabrication with integral outrigger mounts.

**Turret:** Reverse offset turret is one-piece weldment mounted on turret box. Turret rotates on large diameter ball bearing.

**Rotation:** Continuous turret rotation with no stops. Hydraulic motor drives turret through self-locking gear box.

**Boom:** Steel rectangular tube sections. Assembly includes heavy-duty cylinder fittings, pivot pins, and replaceable wear pads.

**Boom Extension:** Two opposing "piggyback" extension cylinders and one overslung cylinder extend the boom sections.

**Lift:** One single-acting full displacement, long stroke cylinder, provides smooth and stable boom elevation. Holding valve prevents boom from falling in event of hose failure.

**Cylinders:** All cylinders use microhoned cylinder tubing, chrome shafts, top grade packing and protective rod wipers. Cylinder-mounted holding valves provided on all load-holding cylinders.

**Hoses:** All high pressure hoses are wire braid reinforced with a minimum safety factor of 4 to 1.

**Oil Tank Capacity:** 35 gallon mounted to truck frame on roadside.

**Hydraulic System:** Operating pressure is 2,500 PSI. System is parallel open center type and is equipped with liquid-filled pressure gauge. Oil is supplied to upper cylinders through hydraulic union in center of turret to cable carrier along side of the boom.

**Pump:** Gear type, direct mount to truck PTO.

**PTO:** Heavy-duty, high-speed. Cable engaged from cab.

**Cab Equipment:** PTO cable or switch with indicator lights installed in truck cab. Engine speed control and start/stop installed with control switches in platform remote control box and also located at lower controls. U/L approved 5:BC dry chemical fire extinguisher installed in truck cab.

**Operators Manual & Video:** Two CDs and one printed copy of operation, maintenance, safety and parts manual provided with each unit. Operational and safety video provided at delivery.

**Installation:** Unit installed on truck, painted, system and tank filled with oil, tested, inspected, and ready to operate.

**Standard Paint:** Paint boom and turret red, outriggers red, and bed and boxes black. Top of steel bed painted with black nonskid surface.

**Bumper:** Bureau of Motor Carrier Safety rear bumper.

**Weight:** Approximately 19,800 lbs. with 18' steel-floor bed less truck.

**Truck Chassis Required:** Approx. 156" C.A. RBM 1,600,000 in-lb. per rail, 13,000 lb. front axle and 33,000 lb. GVWR required. Trucks must have increased cooling, heavy-duty front and rear springs, 12V electrical system with high capacity alternator, cab clearance stop/tail/backup lights, and I.D. lamps. Recommended GVWR is minimum for HI-REACH with flatbed only. Contact factory when additional equipment is to be added.

**Options:**

5,900 lb or 2,000 lb Capacity Boom Winch.

500 lb Capacity Platform Material Handling Jib.

Welder, Air, and 110V Lines to Platform.

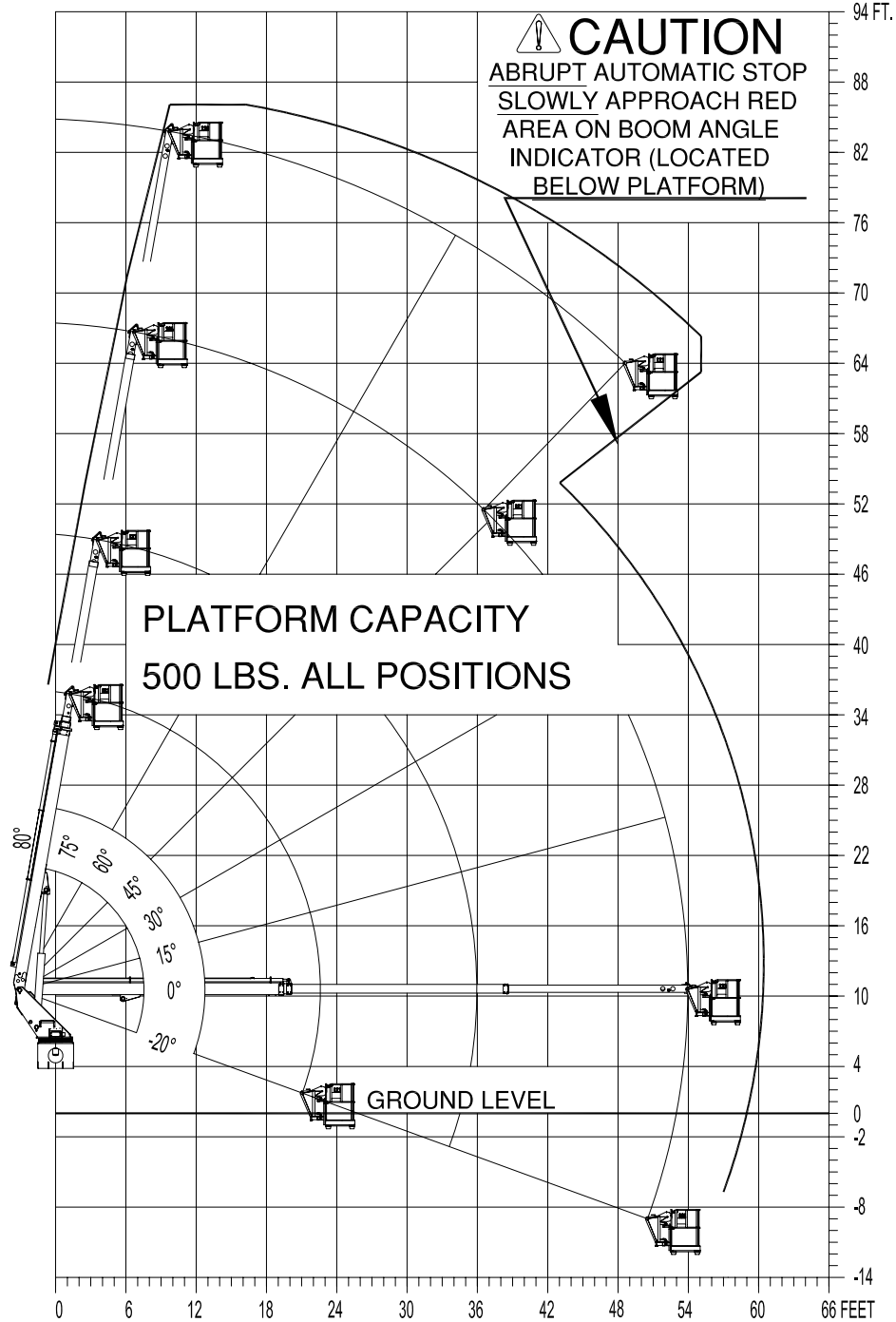
Cab Guard With Platform Access.

Much more....

Elliott Equipment Company reserves the right to change the specification of any unit at any time without prior notice. This brochure is only a statement of general specifications on the date of this publication. For more detailed info on specific Elliott trucks go to [www.elliottequip.com](http://www.elliottequip.com)

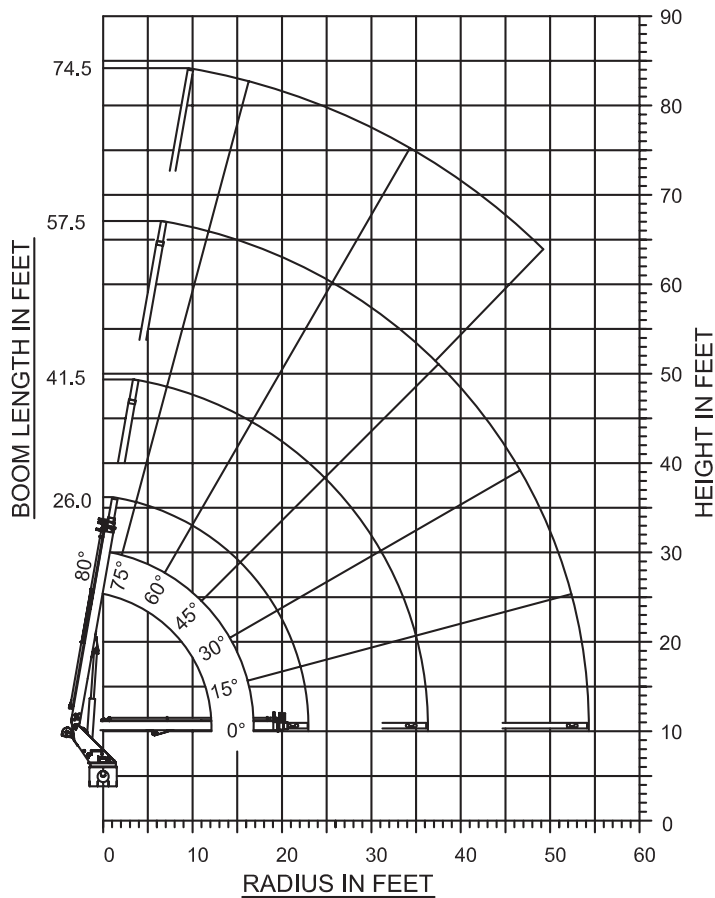
**MAXIMUM RANGE CAPABILITIES**

**PLATFORM WORKING RANGE  
MODEL G85**



**MAXIMUM LIFTING CAPABILITIES**

**ELLIOTT**  
EQUIPMENT COMPANY  
**MODEL G85**



DO NOT PAINT OVER ANY LABELS

**MAXIMUM WORKING LOADS  
CRANE OPERATION**

WINCH LINE LOAD (POUNDS) ON BOOM  
SHEAVE WITH PLATFORM REMOVED.

| RADIUS (FT.) | 26.0' BOOM LENGTH |             | 41.5' BOOM LENGTH |             |
|--------------|-------------------|-------------|-------------------|-------------|
|              | ANGLE (DEG.)      | LOAD (LBS.) | ANGLE (DEG.)      | LOAD (LBS.) |
| 3            | 80                | 5,900       |                   |             |
| 5            | 75                | 5,900       | 80                | 3,800       |
| 8            | 67                | 4,600       | 75                | 3,800       |
| 11           | 60                | 3,400       | 71                | 3,300       |
| 16           | 45                | 3,200       | 63                | 2,300       |
| 19           | 34                | 2,800       | 60                | 2,000       |
| 20           | 30                | 2,700       | 57                | 1,900       |
| 23           | 15                | 2,500       | 52                | 1,900       |
| 24           | 0                 | 2,400       | 50                | 1,800       |
| 27           |                   |             | 45                | 1,800       |
| 34           |                   |             | 30                | 1,600       |
| 38           |                   |             | 15                | 1,500       |
| 39           |                   |             | 0                 | 1,400       |

| RADIUS (FT.) | 57.5' BOOM LENGTH |             | 74.5' BOOM LENGTH |             |
|--------------|-------------------|-------------|-------------------|-------------|
|              | ANGLE (DEG.)      | LOAD (LBS.) | ANGLE (DEG.)      | LOAD (LBS.) |
| 7            | 80                | 2,500       |                   |             |
| 10           | 77                | 2,500       | 80                | 1,800       |
| 16           | 71                | 2,200       | 75                | 1,800       |
| 27           | 60                | 1,500       | 67                | 1,400       |
| 35           | 49                | 1,200       | 60                | 1,200       |
| 39           | 45                | 1,200       | 56                | 1,100       |
| 48           | 30                | 1,100       | 52                | 1,000       |
| 50           | 22                | 1,000       | 48                | 1,000       |
| 53           | 15                | 1,000       |                   |             |
| 55           | 0                 | 1,000       |                   |             |

**USE OUTRIGGERS AT ALL TIMES \* AVOID JERKING LOADS 360°**  
**\* USE 2 PART LINE FOR LOADS OVER 2,500 LBS.**  
**DEDUCT 500 LBS. WITH PLATFORM ATTACHED**

1071150 020803

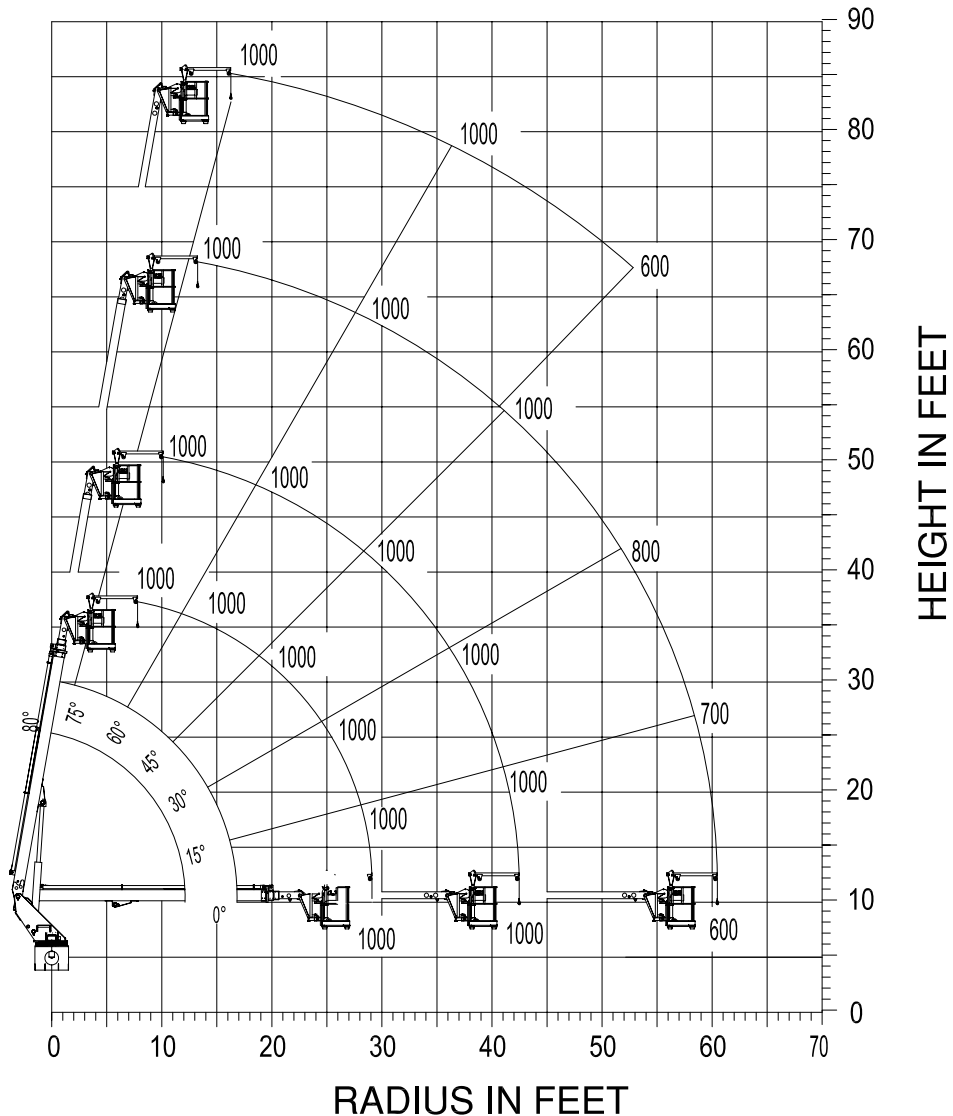
**MAXIMUM JIB LIFTING CAPABILITIES**

**MAXIMUM WORKING LOADS  
500 LBS. PLATFORM JIB OPERATION**

**MODEL G85**

**TOTAL PLATFORM CAPACITY (JIB LOAD PLUS PERSONNEL)**

**USE OUTRIGGERS AT ALL TIMES • AVOID JERKING LOAD  
360° BOOM RADIUS**



**JIB 500 LBS. MAX. PERSONNEL 500 LBS. MAX.**

## CHASSIS DATA

|                                | G85R                                 |
|--------------------------------|--------------------------------------|
| Wheelbase (WB)                 | 224" / 569 cm                        |
| Cab to Axle (CA)               | 156" / 396 cm                        |
| Cab to End of Frame (EOF)      | 240" / 610 cm                        |
| Frame Section Modulus          | 13.3 in3 / 120,000 psi / 827,371 kPa |
| Front Axle Gross Weight Rating | 13,000 lb / 5,896 kg                 |
| Rear Axle Gross Weight Rating  | 20,000 lb / 9,072 kg                 |
| Extended Front Frame           | N/A                                  |

Chassis data is minimum general requirements-not for engineering.  
Actual dimensions and truck data will depend on truck selection and axle configuration.

## OPTIONS



### MH Outriggers With Shortjacking

Reduce outrigger spread with MH outriggers behind the cab and Elliott's automatic safety rotation lockout to operate your HiReach in confined spaces.



### Platform Material Handling Jib

Equip your HiReach platform with a material handling jib crane to lift up to 500 pounds right from the platform.



### High Capacity Boom Winch

Explore the 5,900 lb or 2,000 lb capacity boom winch options that convert the HiReach into a combination aerial work platform and crane.



### Outrigger Pad Holders

Outrigger pad holders safely store your pads for travel and leave plenty of room for tool boxes.



### Bed Accessories

Mount a wide variety of tool accessories including welders, power washers, and generators on the bed with lines to the platform.



### Platform Accessories

Choose from a list of platform accessories including 110V outlets, welding leads, hydraulic tools, and much more.



### High Clearance Outriggers

Our specialized high clearance outriggers provide additional vertical clearance, making it easy to operate along side guard rails or on uneven terrain.

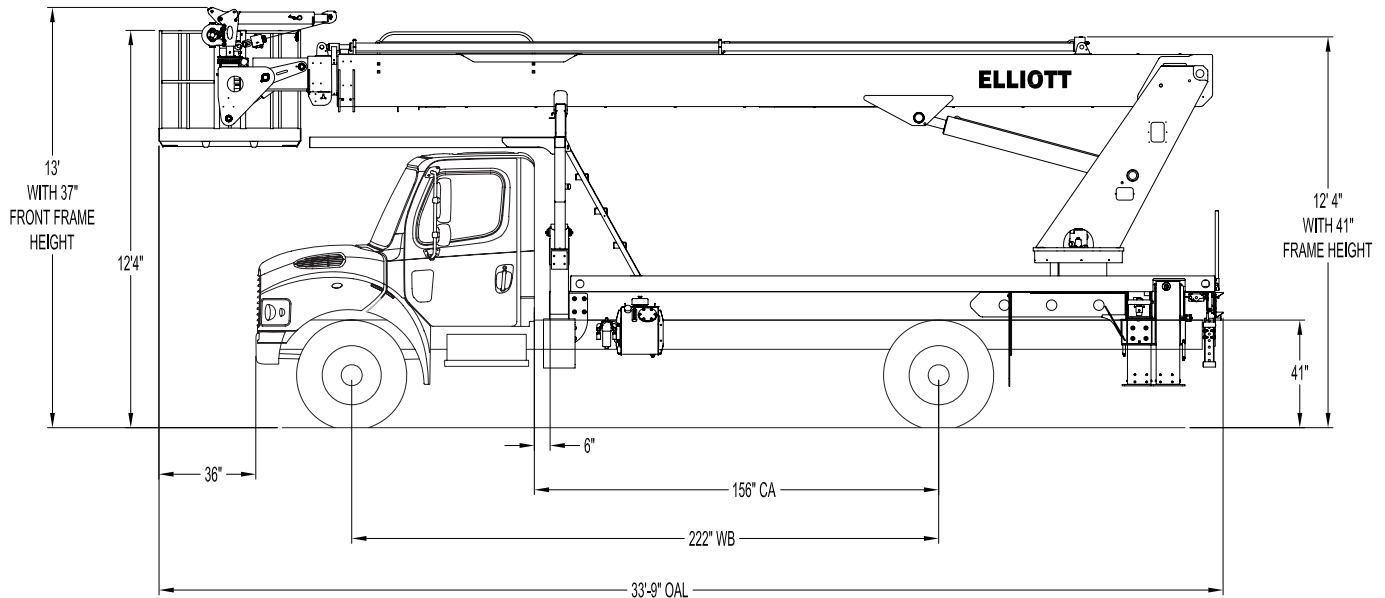


### Custom Toolbox Packages

Let us work with you to customize your storage options by choosing from an array of steel or aluminum underbody and abovebody toolboxes.



## M85 SIDE VIEW DIAGRAM



- |  |                          |   |                        |
|--|--------------------------|---|------------------------|
| • <b>Working Height</b>                | 87' / 26,5 m             | • <b>Powered Boom Sections</b>          | 3                      |
| • <b>Working Side Reach</b>            | 74' / 22,5 m             | • <b>Overall Height</b>                 | 13' / 4 m              |
| • <b>Platform Capacity</b>             | 750 lbs / 340 kg         | • <b>Unit Weight (Bare)</b>             | 13,500 lbs / 6123 kg   |
| • <b>Platform Size</b>                 | 30 x 54 in / 76 x 137 cm | • <b>Outrigger Spread Main</b>          | 18' / 5,5 m            |
| • <b>Platform Type</b>                 | End-Hung                 | • <b>Outrigger Spread Auxiliary</b>     | 12'6" / 3,8 m          |
| • <b>Lifting Capacity (Main Winch)</b> | N/A                      | • <b>Front Axle Gross Weight Rating</b> | 10,000 lbs / 4536 kg   |
| • <b>Jib Winch</b>                     | 500 lbs / 227 kg         | • <b>Minimum Vehicle GVWR</b>           | 25,999 lbs / 11 793 kg |

## TECHNICAL SPECIFICATIONS

**Maximum Platform Height:** 82' ground to platform floor.

**Working Range:** 87' max. working height and 74' max. side reach.

**Work Platform:** 30"x54" non-removable end-mount work platform with 40" high rails. Equipped with two safety lanyard attachment loops and two safety harnesses and 72" lanyards. Platform capacity 750 lbs.

**Platform Leveling System:** Hydraulic system consisting of a single platform cylinder interacting with electro-proportional level sensing system. Remote releveling controls provided in platform and at ground controls to give precise leveling capability.

**Platform Controls:** Three individual proportional electronic controllers meter pilot-operated, pressure-compensated modulating valves. Remote controls for boom operations from platform operate from a removable remote control box. Hi/Lo range, start/stop and engine speed toggle controls are also located at platform. Electric remote control cable extends through the electrical slip ring to cable carrier inside of boom to extending boom sections.

**Lower Controls:** Mounted on curbside of turret.

**Outrigger Controls:** Parallel open-center valve for lever-operated control of right and left outriggers. The outrigger valves are mounted at the rear, under each corner of the bed with roadside valve controlling roadside outriggers and curbside valve controlling curbside outriggers.

**Outriggers:** "A" frame auxiliary outriggers with a 12'6" spread, and "MH" out-and-down main outriggers with an 18' spread.

**Frame:** One piece, all welded, box-type fabrication.

**Turret:** Reverse offset turret is one-

piece weldment. Turret rotates on large diameter ball bearing.

**Rotation:** Continuous turret rotation with no stops. Hydraulic motor drives turret through dual self-locking gear box.

**Boom:** Steel rectangular tube sections. Assembly includes heavy-duty cylinder fittings, pivot pins, and replaceable wear pads.

**Boom Extension:** Single extension cylinder and cables extend the boom sections proportionally.

**Lift:** One single-acting full displacement, long stroke cylinder, provides smooth and stable boom elevation. Holding valve prevent boom from falling in event of hose failure.

**Cylinders:** All cylinders use microhoned cylinder tubing, chrome shafts, top grade packing and protective rod wipers. Cylinder-mounted holding valves provided on all load-holding cylinders.

**Hoses:** All high pressure hoses are wire braid reinforced with a minimum safety factor of 4 to 1.

**Oil Tank Capacity:** 19 gallon mounted to the truck frame.

**Hydraulic System:** Operating pressure approximately 2,750 PSI. System is parallel open center type and is equipped with liquid-filled pressure gauge. Oil is supplied to upper cylinders through hydraulic union in center of turret to cable carrier inside of the boom.

**Pump:** Gear type, direct mount to truck PTO.

**PTO:** Heavy-duty, high-speed. Cable engaged from cab.

**Cab Equipment:** PTO cable or switch with indicator lights installed in truck cab. Engine speed control and start/stop installed with control switches in platform remote control box and also located at lower controls. U/L approved 5:BC dry chemical fire extinguisher

installed in truck cab.

**Operators Manual & Video:** Two CDs and one printed copy of operation, maintenance, safety and parts manual provided with each unit. Operational and safety video provided at delivery.

**Installation:** Unit installed on truck, painted, system and tank filled with oil, tested, inspected, and ready to operate.

**Standard Paint:** Paint boom and turret red, outriggers red, and bed and boxes black. Top of steel bed painted with black nonskid surface.

**Bumper:** Bureau of Motor Carrier Safety rear bumper.

**Weight:** Approximately 13,500 lbs. with 20'6" steel-floor bed less truck.

**Truck Chassis Required:** Approx. 156" C.A., 10,000 lb. front axle and 25,999 lb. GVWR required. Trucks must have increased cooling, heavy-duty front and rear springs, 12V electrical system with high capacity alternator, cab clearance stop/tail/backup lights, and I.D. lamps. Recommended GVWR is minimum for HiReach with flatbed only. Contact factory when additional equipment is to be added.

**Options:**

98" x 36" x 24" Steel Cross Body Box.

500 lb Capacity Platform Material Handling Jib.

110 Volt Line to Platform.

Much More...

Elliott Equipment Company reserves the right to change the specification of any unit at any time without prior notice. This brochure is only a statement of general specifications on the date of this publication. For more detailed info on specific Elliott trucks go to [www.elliottequip.com](http://www.elliottequip.com)

**MAXIMUM RANGE AND JIB CAPABILITIES**

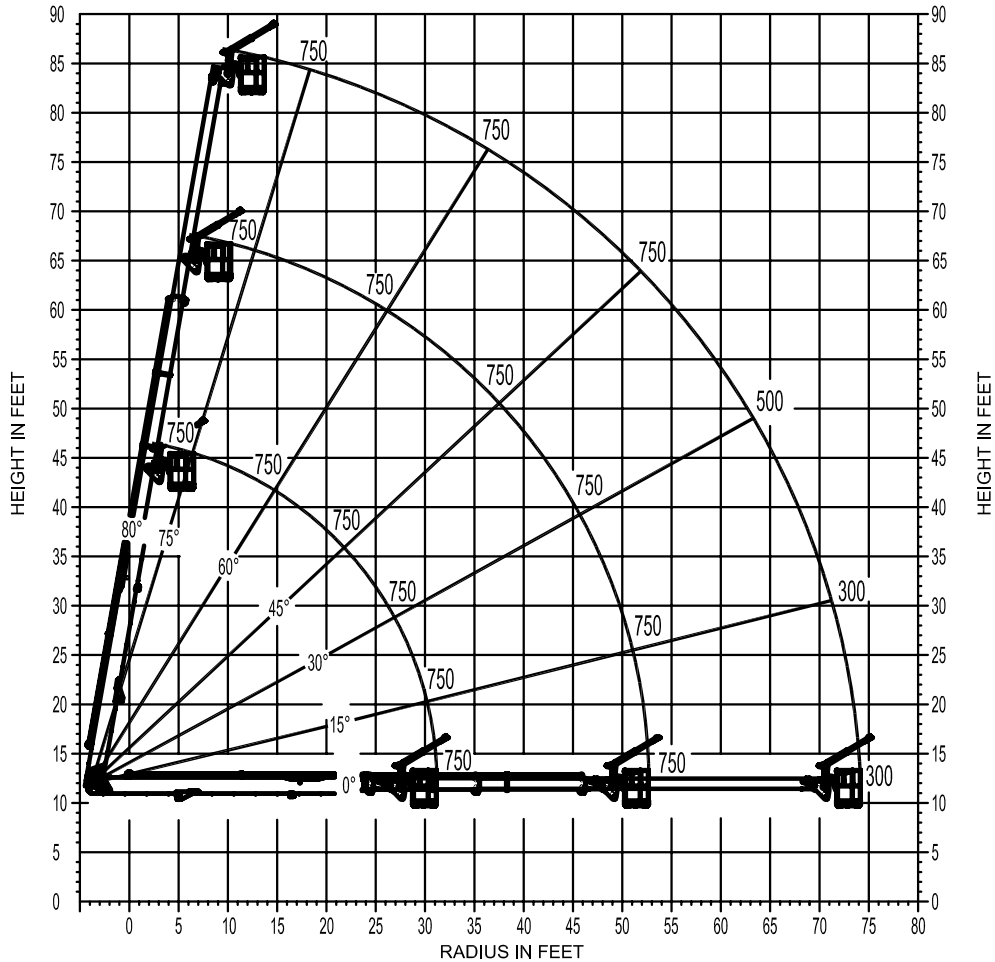
**MAXIMUM WORKING LOADS  
750 LBS. PLATFORM JIB OPERATION**

**MODEL M85**

**TOTAL PLATFORM CAPACITY (JIB LOAD PLUS PERSONNEL)**

**USE OUTRIGGERS AT ALL TIMES AVOID JERKING LOAD**

**360° RADIUS**



**JIB 500 LBS. MAXIMUM PERSONNEL 750 LBS. MAXIMUM**

**ELLIOTT**

**EQUIPMENT COMPANY**

DO NOT PAINT OVER ANY LABELS

1164250 04182011

Elliott Equipment Company reserves the right to change the specification of any unit at any time without prior notice. This brochure is only a statement of general specifications on the date of this publication. For more detailed info on specific Elliott trucks go to [www.elliottequip.com](http://www.elliottequip.com)

## CHASSIS DATA

|                                | M85                                |
|--------------------------------|------------------------------------|
| Wheelbase (WB)                 | 222" / 655 cm                      |
| Cab to Axle (CA)               | 156" / 488 cm                      |
| Cab to End of Frame (EOF)      | 273" / 820 cm                      |
| Frame Section Modulus          | 10.8 in <sup>3</sup> / 120,000 psi |
| Front Axle Gross Weight Rating | 10,000 lb / 4536 kg                |
| Rear Axle Gross Weight Rating  | 19,000 lb / 8618 kg                |
| Extended Front Frame           | N/A                                |

Chassis data is minimum general requirements-not for engineering.  
Actual dimensions and truck data will depend on truck selection and axle configuration.

## OPTIONS



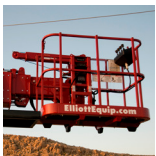
### Non-CDL Chassis Options

Take advantage of the low chassis GVWR requirements by mounting your HiReach on a non-CDL truck chassis.



### Material Handling Jib

Equip your HiReach platform with a hydraulic material handling jib crane to handle up to 500 lbs.



### High Capacity Platform

Take advantage of the 750 lb capacity work platform by carrying additional tools and supplies onto the job site.



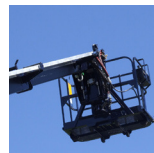
### Outrigger Pad Holders

Outrigger pad holders safely store your outrigger pads for travel and leave plenty of room for tool boxes.



### Bed Accessories

Mount a wide variety of accessories including generators and inverters.



### Platform Accessories

Choose from a list of platform accessories including 110V outlets, 3/8" air lines, sign forks, and much more.



### Walkway Platform Access

Select Elliott's walkway access to the platform to easily step into the platform from the bed with the boom stowed.

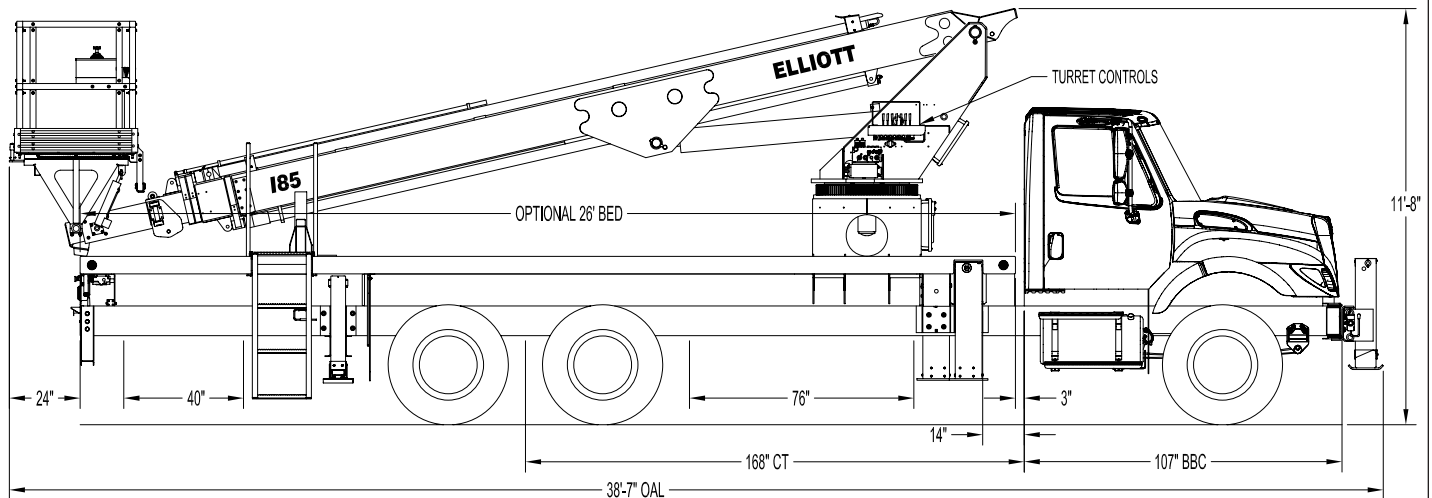


### Line Body

Let us work with you to customize a line body to secure your tools and supplies the best way for your application.



### I85F SIDE VIEW DIAGRAM



- |  |                           |   |                        |
|--|---------------------------|---|------------------------|
| • <b>Working Height</b>                | 90' / 27,4 m              | • <b>Powered Boom Sections</b>          | 4                      |
| • <b>Working Side Reach</b>            | 59' / 18 m                | • <b>Overall Height</b>                 | 11'8" / 3,5 m          |
| • <b>Platform Capacity</b>             | 600 lbs / 272 kg          | • <b>Unit Weight (Bare)</b>             | 18,500 lbs / 8391 kg   |
| • <b>Platform Size</b>                 | 40 x 60 in / 102 x 152 cm | • <b>Outrigger Spread Main</b>          | 18' / 5,4 m            |
| • <b>Platform Type</b>                 | Insulated Top-Mount       | • <b>Outrigger Spread Auxiliary</b>     | 8' / 2,4 m             |
| • <b>Lifting Capacity (Main Winch)</b> | 3,650 lbs / 1656 kg       | • <b>Front Gross Axle Weight Rating</b> | 14,000 lbs / 6350 kg   |
| • <b>Insulation Rating</b>             | 46KV Category C           | • <b>Rear Gross Axle Weight Rating</b>  | 40,000 lbs / 18 144 kg |

## TECHNICAL SPECIFICATIONS

**Maximum Platform Height:** 85' ground to platform floor.

**Working Range:** 90' max. height and 59' max. side reach.

**Work Platform:** 40x60" fiberglass top-mount work platform with 40" high rails and a grated fiberglass floor. Equipped with two safety lanyard attachment loops, two safety harnesses, and two lanyards. Platform capacity is 600 lbs.

**Platform Leveling System:** Hydraulic "closed" system consisting of twin platform cylinders interacting with a boom-actuated master cylinder mounted in boom support turret. System provided with factory-set relief valves to compensate for oil expansion or overload during platform leveling operation. Remote releveling controls provided in platform and at ground controls to give precise releveling capability.

**Platform Controls:** Joystick controller with enable finger switch for boom extension, elevation and rotation. Also includes remote chassis engine start-stop and engine speed system. Boom controls actuation to be accomplished by means of proportional fiberoptic controls using 'Pulsar' technology. Control signal to be transmitted from platform by plastic fiberoptic light conductor extending through cable carrier and fiberglass tube to the extending boom sections. Control system to be battery operated with secondary battery and charger in cab.

**Lower Controls:** Mounted on curbside of turret.

**Outrigger Controls:** Parallel open-center stack valve for lever-operated control of right and left outriggers. The outrigger valves are mounted at the rear, under each corner of the bed with roadside valve controlling roadside outriggers, curbside valve controlling curbside outriggers and additional valve at front bumper for front stabilizer.

**Outriggers:** "MH" type out-and-down main outriggers with 18' spread. "A" type underslung secondary outriggers with 8' spread. Front stabilizer shall be installed on minimum 20" front frame extensions.

**Frame:** One piece, all welded, box-type fabrication with integral outrigger mounts.

**Turret:** Reverse offset turret is one-piece weldment mounted on turret box. Turret rotates on large diameter ball bearing.

**Rotation:** Continuous turret rotation with no stops. Hydraulic motor drives turret through self-locking gear box.

**Boom:** Three steel rectangular tube sections and one fiberglass section 9" high x 7" wide with a 3/4" wall section. Assembly includes heavy-duty cylinder fittings, pivot pins, and replaceable wear pads.

**Boom Extension:** One "double-case" double-acting cylinder extends the final fiberglass section. Main boom sections extend via two external cylinders. Fiberglass section to extend first, and retract last.

**Lift:** One double-acting full displacement, long stroke cylinder, provides smooth and stable boom elevation. Holding valve prevent boom from falling in event of hose failure.

**Cylinders:** All cylinders use microhoned cylinder tubing, chrome shafts, top grade packing and protective rod wipers. Cylinder-mounted holding valves provided on all load-holding cylinders.

**Hoses:** All high pressure hoses are wire braid reinforced with a minimum safety factor of 4 to 1.

**Oil Tank Capacity:** 70 gallon mounted to side of sub frame below the bed.

**Hydraulic System:** Operating pressure approximately 3,000 PSI. System is parallel open center type and is equipped

with liquid-filled pressure gauge. Oil is supplied to upper cylinders through hydraulic union in center of turret to cable carrier along side of the boom.

**Pump:** Gear type, direct mount to truck PTO.

**PTO:** Heavy-duty, high-speed. Switch engaged from cab.

**Cab Equipment:** PTO switch with indicator lights installed in truck cab. Engine speed control and start/stop installed with control switches in platform remote control box and also located at lower controls. U/L approved 5:BC dry chemical fire extinguisher installed in truck cab.

**Operators Manual & Video:** Two CDs and one printed copy of operation, maintenance, safety and parts manual provided with each unit. Operational and safety video provided at delivery.

**Installation:** Unit installed on truck, painted, system and tank filled with oil, tested, inspected, and ready to operate.

**Standard Paint:** Paint boom and turret red, outriggers red, and bed and boxes black. Top of bed painted with black nonskid surface.

**Bumper:** Bureau of Motor Carrier Safety rear bumper.

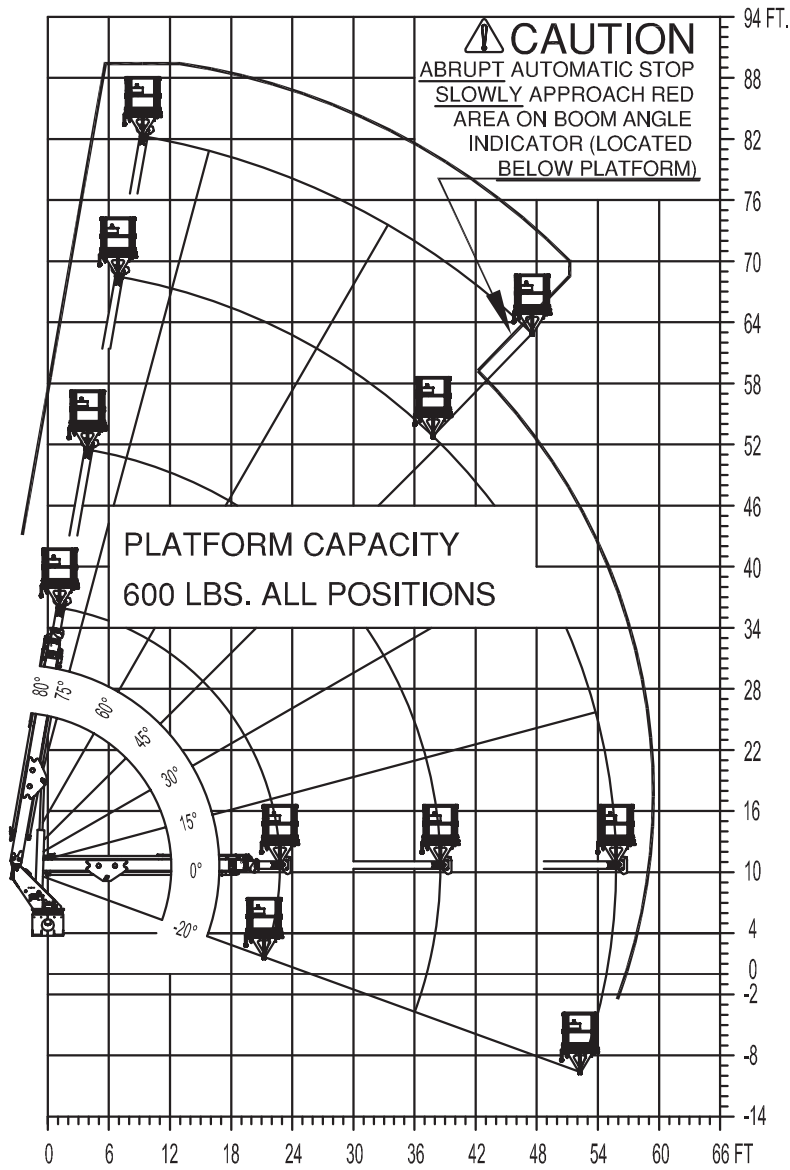
**Weight:** Approximately 18,500 lbs. with 26' steel-floor bed less truck.

**Truck Chassis Required:** Approx. 168" C.A., RBM 2,000,000 in-lb. per rail, 14,000 lb. front axle and 54,000 lb. GVWR required. Trucks must have front frame extensions, increased cooling, heavy-duty front and rear springs, 12V electrical system with high capacity alternator, cab clearance stop/tail/backup lights, and I.D. lamps. Recommended GVWR is minimum for HiReach with flatbed only. Contact factory when additional equipment is to be added.

Elliott Equipment Company reserves the right to change the specification of any unit at any time without prior notice. This brochure is only a statement of general specifications on the date of this publication. For more detailed info on specific Elliott trucks go to [www.elliottequip.com](http://www.elliottequip.com)

MAXIMUM RANGE CAPABILITIES

# PLATFORM WORKING RANGE MODEL I85



**ELLIOTT**  
EQUIPMENT COMPANY

DO NOT PAINT OVER ANY LABELS

1111460 041406

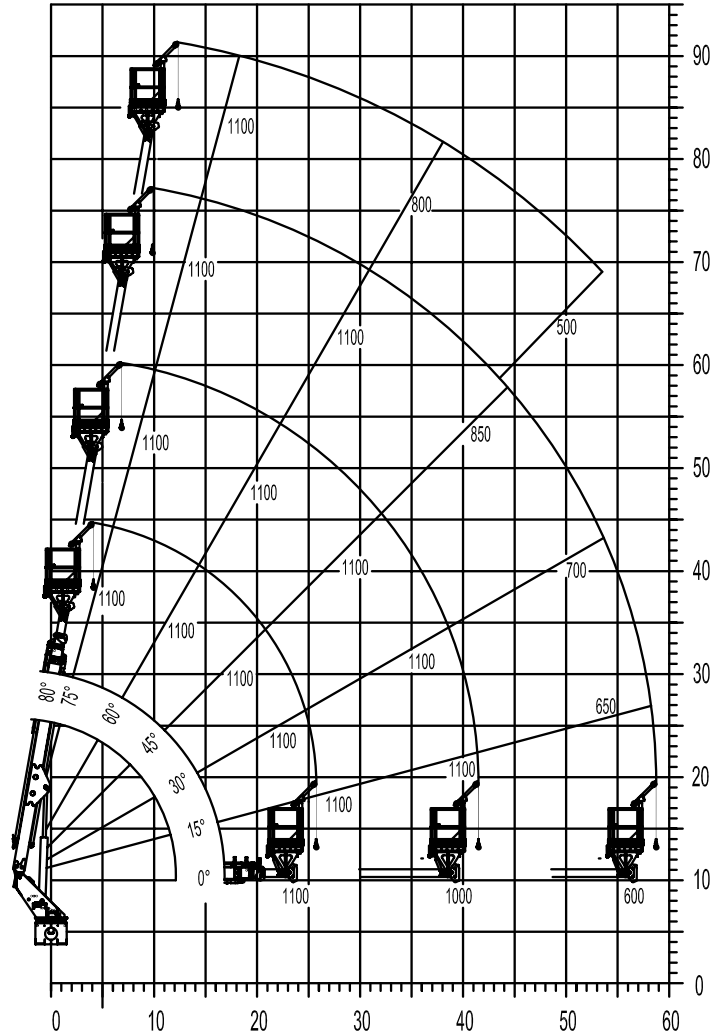
**MAXIMUM WORKING LOADS - JIB WINCH**

**MAXIMUM WORKING LOADS  
PLATFORM JIB OPERATION**

**MODEL I85**

TOTAL PLATFORM CAPACITY (JIB LOAD PLUS PERSONNEL)

USE OUTRIGGERS AT ALL TIMES • AVOID JERKING LOAD • 360° RADIUS



JIB 500 LBS. MAX. PERSONNEL 600 LBS. MAX.

**ELLIOTT**  
EQUIPMENT COMPANY

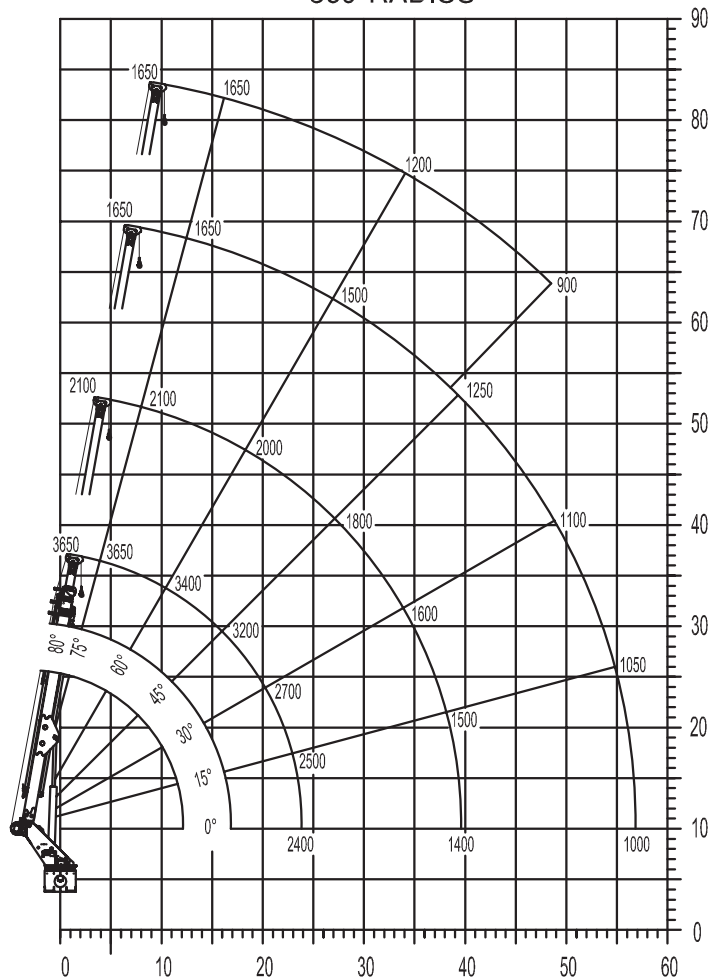
1192380 041013

**MAXIMUM WORKING LOADS - MAIN WINCH**

**MAXIMUM WORKING LOADS  
CRANE OPERATION**

**MODEL I85**

WINCH LINE LOAD (POUNDS) WITH BUCKETS OR PLATFORM REMOVED  
USE OUTRIGGERS AT ALL TIMES • AVOID JERKING LOAD  
360° RADIUS



DEDUCT 400 POUNDS WITH BUCKETS OR PLATFORM ATTACHED



DO NOT PAINT OVER ANY LABELS

1111450 041406

## CHASSIS DATA

|                                | I85F                          |
|--------------------------------|-------------------------------|
| Wheelbase (WB)                 | 236" / 600 cm                 |
| Cab to Axle (CA)               | 168" / 427 cm                 |
| Cab to End of Frame (EOF)      | 315" / 800 cm                 |
| Frame Section Modulus          | 16.6 in3 / 120,000 psi        |
| Front Axle Gross Weight Rating | 14,000 lb / 6350 kg           |
| Rear Axle Gross Weight Rating  | 40,000 lb / 18 144 kg         |
| Extended Front Frame           | Required for Front Stabilizer |

Chassis data is minimum general requirements-not for engineering.  
Actual dimensions and truck data will depend on truck selection and axle configuration.

## OPTIONS



### Radio Remote Control

Interference protected radio remotes hard-wired to the platform let you get closer to your work and have full control over your machine.



### Material Handling Jib

Equip your HiReach platform with a material handling jib crane to handle up to 500 lbs. from within arm's reach.



### MH Outriggers With Shortjacking

Reduce outrigger spread with MH secondary outriggers and Elliott's Automatic Safety Rotation Lockout to operate your HiReach in confined spaces.



### Outrigger Pad Holders

Outrigger pad holders safely store your pads for travel and leave plenty of room for tool boxes.



### Bed Accessories

Mount a wide variety of tool accessories including welders, power washers, and generators on the bed with lines to the platform.



### Platform Accessories

Choose from a list of platform accessories including hydraulic accessory lines and a 3/8" air line to power tools from within the platform.



### Outrigger Extensions

Our pin-on outrigger extensions give you extra clearance for work on hills and around guardrails.

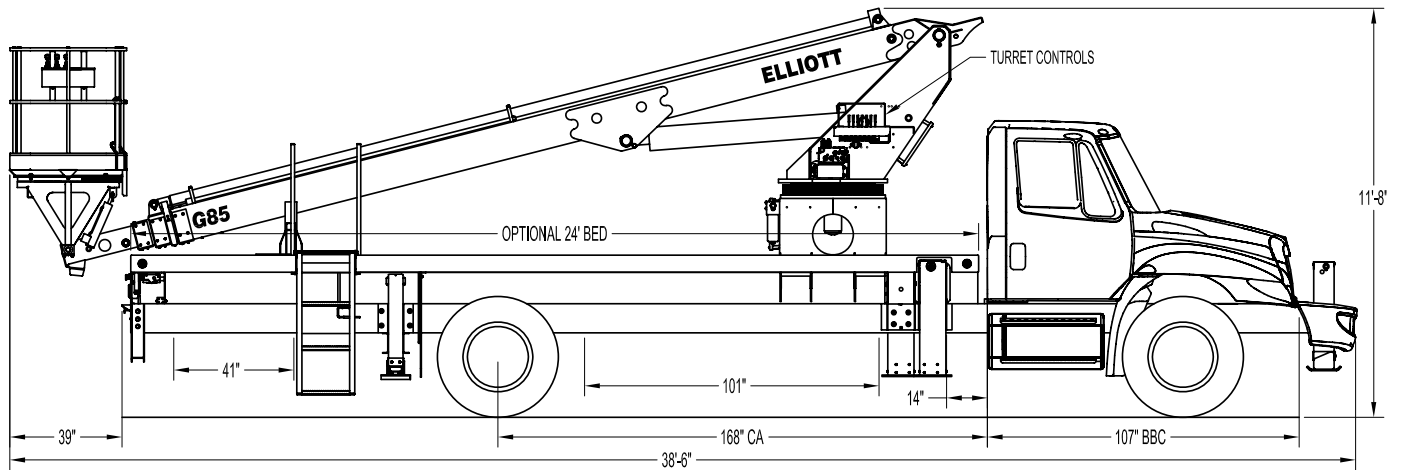


### Line Body

Let us work with you to customize a line body to secure your tools and supplies the the best way for your application.



### G85F SIDE VIEW DIAGRAM



- |  |                           |   |                      |
|--|---------------------------|---|----------------------|
| • <b>Working Height</b>                | 90' / 27,4 m              | • <b>Powered Boom Sections</b>          | 4                    |
| • <b>Working Side Reach</b>            | 58' / 17,7 m              | • <b>Overall Height</b>                 | 11'8" / 3,6 m        |
| • <b>Platform Capacity</b>             | 600 lbs / 272 kg          | • <b>Unit Weight (Bare)</b>             | 18,000 lbs / 8165 kg |
| • <b>Platform Size</b>                 | 40 x 60 in / 102 x 152 cm | • <b>Outrigger Spread Main</b>          | 18' / 5,5 m          |
| • <b>Platform Type</b>                 | Top-Mount                 | • <b>Outrigger Spread Auxiliary</b>     | 8' / 2,4 m           |
| • <b>Lifting Capacity (Main Winch)</b> | 5,900 lbs / 2676 kg       | • <b>Front Gross Axle Weight Rating</b> | 13,000 lbs / 5897 kg |
| • <b>Jib Winch</b>                     | 1,000 lbs / 454 kg        | • <b>Rear Gross Axle Weight Rating</b>  | 20,000 lbs / 9072 kg |

## TECHNICAL SPECIFICATIONS

**Maximum Platform Height:** 85' ground to platform floor.

**Working Range:** 90' max. height and 58' max. side reach.

**Work Platform:** 40x60" Top-Mount work platform with 40" high rails. Equipped with two safety lanyard attachment loops and two safety harnesses and 72" lanyards. Platform capacity 600 lbs.

**Platform Leveling System:** Hydraulic "closed" system consisting of twin platform cylinders interacting with a boom-actuated master cylinder mounted in boom support turret. System provided with factory-set relief valves to compensate for oil expansion or overload during platform leveling operation. Remote releveling controls provided in platform and at ground controls to give precise releveling capability.

**Platform Controls:** Three individual proportional electronic controllers meter pilot-operated, pressure-compensated modulating valves. Boom ground controls are mounted on curbside of turret. Remote controls for boom operations from platform operate from a removable remote control box. Hi/Lo range, start/stop and engine speed toggle controls are also located at platform. Electric remote control cable extends through the electrical slip ring to cable carrier on side of boom to extending boom sections.

**Lower Controls:** Mounted on curbside of turret.

**Outrigger Controls:** Parallel open-center stack valve for lever-operated control of right and left outriggers. The outrigger valves are mounted at the rear, under each corner of the bed with roadside valve controlling roadside outriggers and curbside valve controlling curbside outriggers.

**Outriggers:** One set of main "MH"

type out-and-down outriggers with 18' spread behind the cab. Secondary "A" type underslung outriggers at the rear with an 8' spread. Front stabilizer required for 360 degree stability.

**Frame:** One piece, all welded, box-type fabrication with integral outrigger mounts.

**Turret:** Reverse offset turret is one-piece weldment mounted on turret box. Turret rotates on large diameter ball bearing.

**Rotation:** Continuous turret rotation with no stops. Hydraulic motor drives turret through self-locking gear box.

**Boom:** Steel rectangular tube sections. Assembly includes heavy-duty cylinder fittings, pivot pins, and replaceable wear pads.

**Boom Extension:** Two opposing "piggyback" extension cylinders extend the boom sections.

**Lift:** One single-acting full displacement, long stroke cylinder, provides smooth and stable boom elevation. Holding valve prevent boom from falling in event of hose failure.

**Cylinders:** All cylinders use microhoned cylinder tubing, chrome shafts, top grade packing and protective rod wipers. Cylinder-mounted holding valves provided on all load-holding cylinders.

**Hoses:** All high pressure hoses are wire braid reinforced with a minimum safety factor of 4 to 1.

**Oil Tank Capacity:** 35 gallon mounted to truck frame on roadside.

**Hydraulic System:** Operating pressure approximately 2,500 PSI. System is parallel open center type and is equipped with liquid-filled pressure gauge. Oil is supplied to upper cylinders through hydraulic union in center of turret to cable carrier along side of the boom.

**Pump:** Gear type, direct mount to truck PTO.

**PTO:** Heavy-duty, high-speed. Cable engaged from cab.

**Cab Equipment:** PTO switch with indicator lights installed in truck cab. Engine speed control and start/stop installed with control switches in platform remote control box and also located at lower controls. U/L approved 5:BC dry chemical fire extinguisher installed in truck cab.

**Operators Manual & Video:** Two CDs and one printed copy of operation, maintenance, safety and parts manual provided with each unit. Operational and safety video provided at delivery.

**Installation:** Unit installed on truck, painted, system and tank filled with oil, tested, inspected, and ready to operate.

**Standard Paint:** Paint boom and turret red, outriggers red, and bed and boxes black. Top of steel bed painted with black nonskid surface.

**Bumper:** Bureau of Motor Carrier Safety rear bumper.

**Weight:** Approximately 18,000 lbs. with 24' steel-floor bed less truck.

**Truck Chassis Required:** Approx. 168" C.A. RBM 1,600,000 in-lb. per rail, 13,000 lb. front axle and 33,000 lb. GVWR required. Trucks must have front frame extensions, increased cooling, heavy-duty front and rear springs, 12V electrical system with high capacity alternator, cab clearance stop/tail/backup lights, and I.D. lamps. Extended front frame rails. Recommended GVWR is minimum for HiReach with flatbed only. Contact factory when additional equipment is to be added.

**Options:**

5,900 lb Capacity Boom Winch

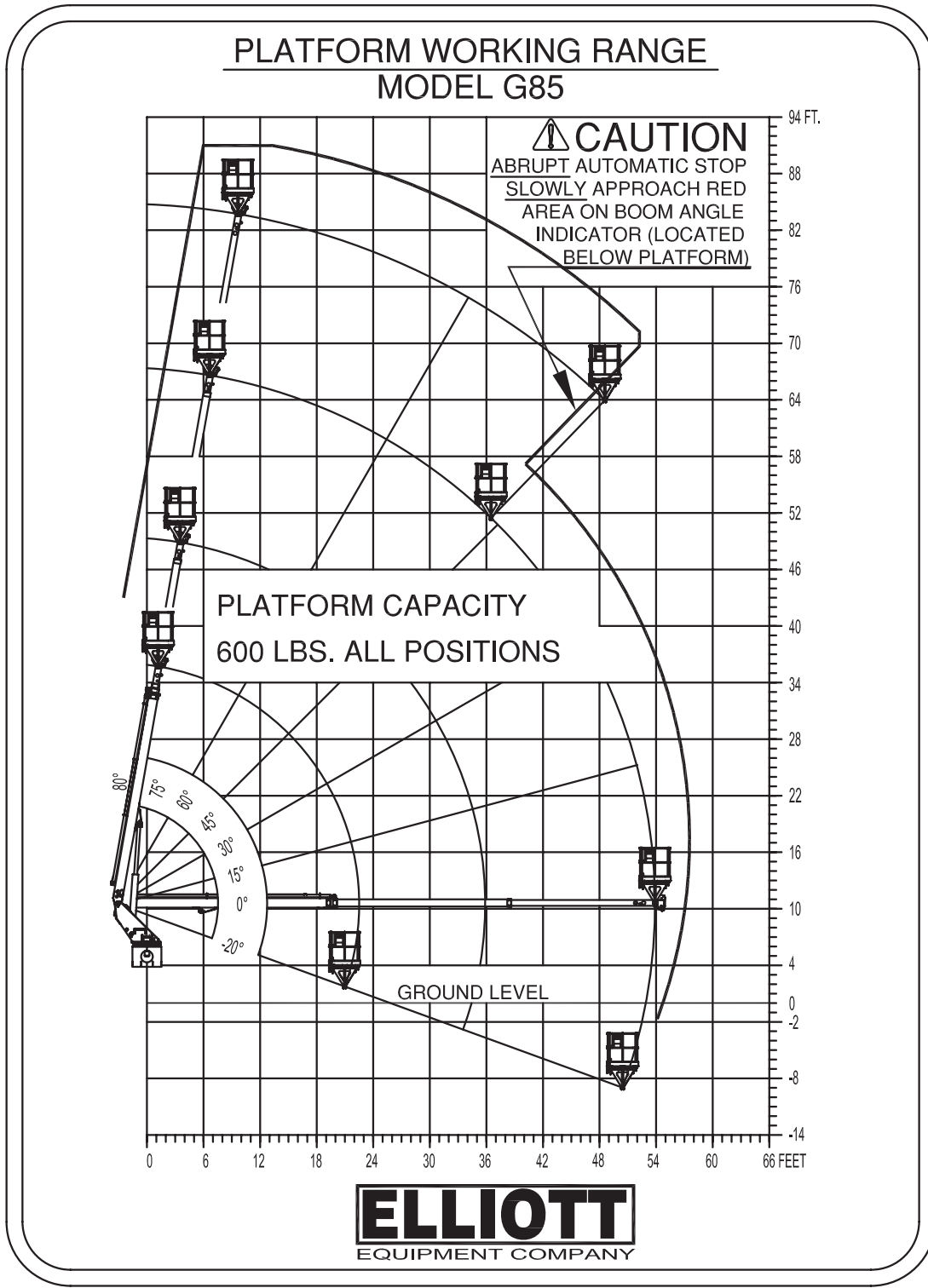
1,000 lb Capacity Platform Jib

Welder, Air, and 110V Lines to Platform.

Much More....

Elliott Equipment Company reserves the right to change the specification of any unit at any time without prior notice. This brochure is only a statement of general specifications on the date of this publication. For more detailed info on specific Elliott trucks go to [www.elliottequip.com](http://www.elliottequip.com)

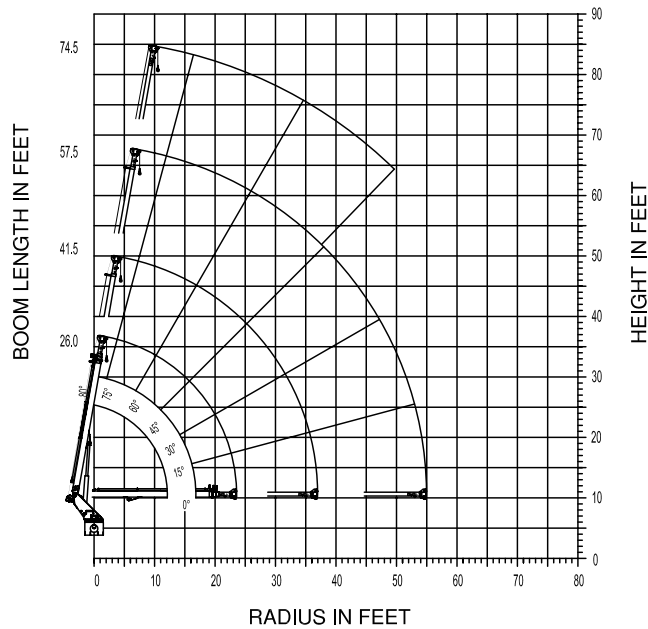
MAXIMUM RANGE CAPABILITIES



**MAXIMUM LIFTING CAPABILITIES**



**MODEL G85**



DO NOT PAINT OVER ANY LABELS

1065780 013003

**MAXIMUM WORKING LOADS  
CRANE OPERATION  
MODEL G85**

WINCH LINE LOAD (POUNDS) WITH BUCKETS OR PLATFORM REMOVED

| RADIUS (FT.) | 26.0' BOOM LENGTH |             | 41.5' BOOM LENGTH |             |
|--------------|-------------------|-------------|-------------------|-------------|
|              | ANGLE (DEG.)      | LOAD (LBS.) | ANGLE (DEG.)      | LOAD (LBS.) |
| 3            | 80                | 5,900       |                   |             |
| 5            | 75                | 5,900       | 80                | 3,800       |
| 8            | 67                | 4,600       | 75                | 3,800       |
| 11           | 60                | 3,400       | 71                | 3,300       |
| 16           | 45                | 3,200       | 63                | 2,300       |
| 19           | 34                | 2,800       | 60                | 2,000       |
| 20           | 30                | 2,700       | 57                | 1,900       |
| 23           | 15                | 2,500       | 52                | 1,900       |
| 24           | 0                 | 2,400       | 50                | 1,800       |
| 27           |                   |             | 45                | 1,800       |
| 34           |                   |             | 30                | 1,600       |
| 38           |                   |             | 15                | 1,500       |
| 39           |                   |             | 0                 | 1,400       |

| RADIUS (FT.) | 57.5' BOOM LENGTH |             | 74.5' BOOM LENGTH |             |
|--------------|-------------------|-------------|-------------------|-------------|
|              | ANGLE (DEG.)      | LOAD (LBS.) | ANGLE (DEG.)      | LOAD (LBS.) |
| 7            | 80                | 2,500       |                   |             |
| 10           | 77                | 2,500       | 80                | 1,800       |
| 16           | 71                | 2,200       | 75                | 1,800       |
| 27           | 60                | 1,500       | 67                | 1,400       |
| 35           | 49                | 1,200       | 60                | 1,200       |
| 39           | 45                | 1,200       | 56                | 1,100       |
| 48           | 30                | 1,100       | 52                | 1,000       |
| 50           | 22                | 1,000       | 48                | 1,000       |
| 53           | 15                | 1,000       |                   |             |
| 55           | 0                 | 1,000       |                   |             |

USE OUTRIGGERS AT ALL TIMES \* AVOID JERKING LOADS  
360° RADIUS \* USE 2 PART LINE FOR LOADS OVER 2,500 LBS.  
DEDUCT 400 LBS. WITH BUCKET OR PLATFORM ATTACHED

DO NOT PAINT OVER ANY LABELS

1065780 013003

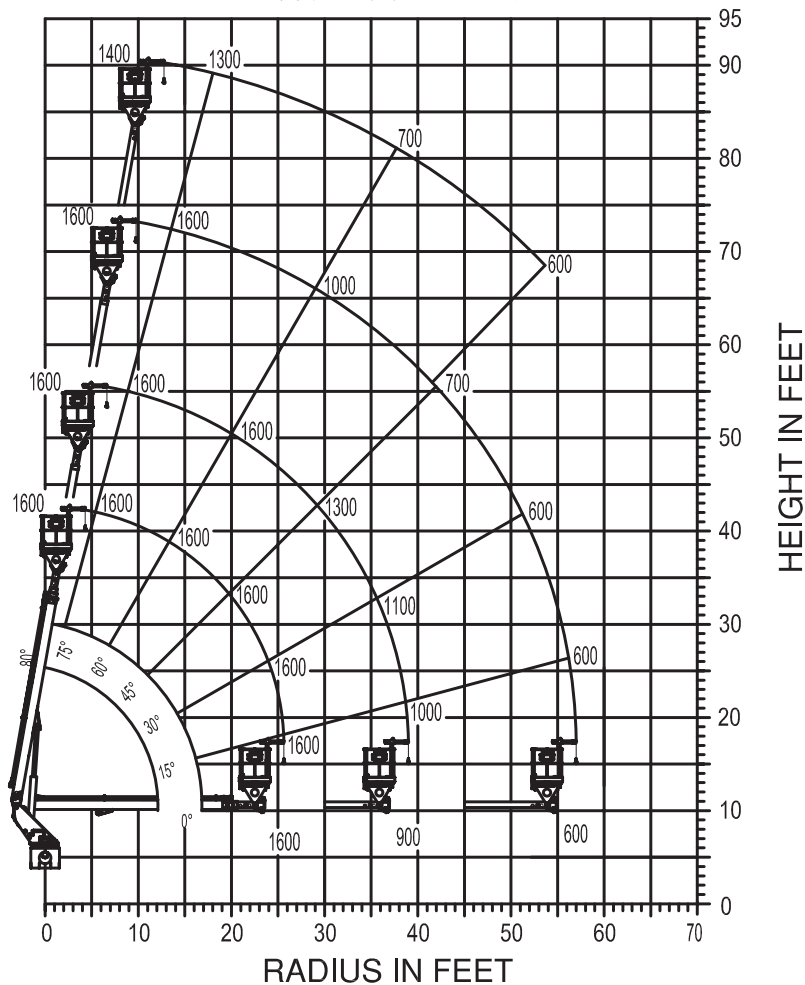
**MAXIMUM JIB LIFTING CAPABILITIES**

**MAXIMUM WORKING LOADS  
1,000 LBS. PLATFORM JIB OPERATION**

**MODEL G85**

**TOTAL PLATFORM CAPACITY (JIB LOAD PLUS PERSONNEL)**

USE OUTRIGGERS AT ALL TIMES • AVOID JERKING LOAD  
360° BOOM RADIUS



**JIB 1,000 LBS. MAX. PERSONNEL 600 LBS. MAX.**



DO NOT PAINT OVER ANY LABELS

1073950 102903

**CHASSIS DATA**

|                                | G85F                          |
|--------------------------------|-------------------------------|
| Wheelbase (WB)                 | 234" / 594 cm                 |
| Cab to Axle (CA)               | 168" / 427 cm                 |
| Cab to End of Frame (EOF)      | 293" / 744 cm                 |
| Frame Section Modulus          | 13.3 in3 / 120,000 psi        |
| Front Axle Gross Weight Rating | 13,000 lb / 5897 kg           |
| Rear Axle Gross Weight Rating  | 20,000 lb / 9072 kg           |
| Extended Front Frame           | Required for Front Stabilizer |

Chassis data is minimum general requirements-not for engineering.  
Actual dimensions and truck data will depend on truck selection and axle configuration.

**OPTIONS**



**MH Outriggers With Shortjacking**

Reduce outrigger spread with Elliott's automatic safety rotation lockout to operate your HiReach in confined spaces.



**Material Handling Jib**

Equip your HiReach platform with a material handling jib crane to handle up to 1,000 pounds.



**Boom-Mounted Winch**

Take advantage of the 5,900 lb capacity 2 speed hydraulic winch with 1/2" cable.



**Outrigger Pad Holders**

Outrigger pad holders safely store your pads for travel and leave plenty of room for tool boxes.



**Bed Accessories**

Mount a wide variety of tool accessories including welders, power washers, and generators on the bed with lines to the platform.



**Platform Accessories**

Choose from a list of platform accessories including 110V outlets, welding leads, hydraulic tools, and much more.



**Outrigger Extensions**

Our pin-on outrigger extensions give you extra clearance for work on hills and around guardrails.

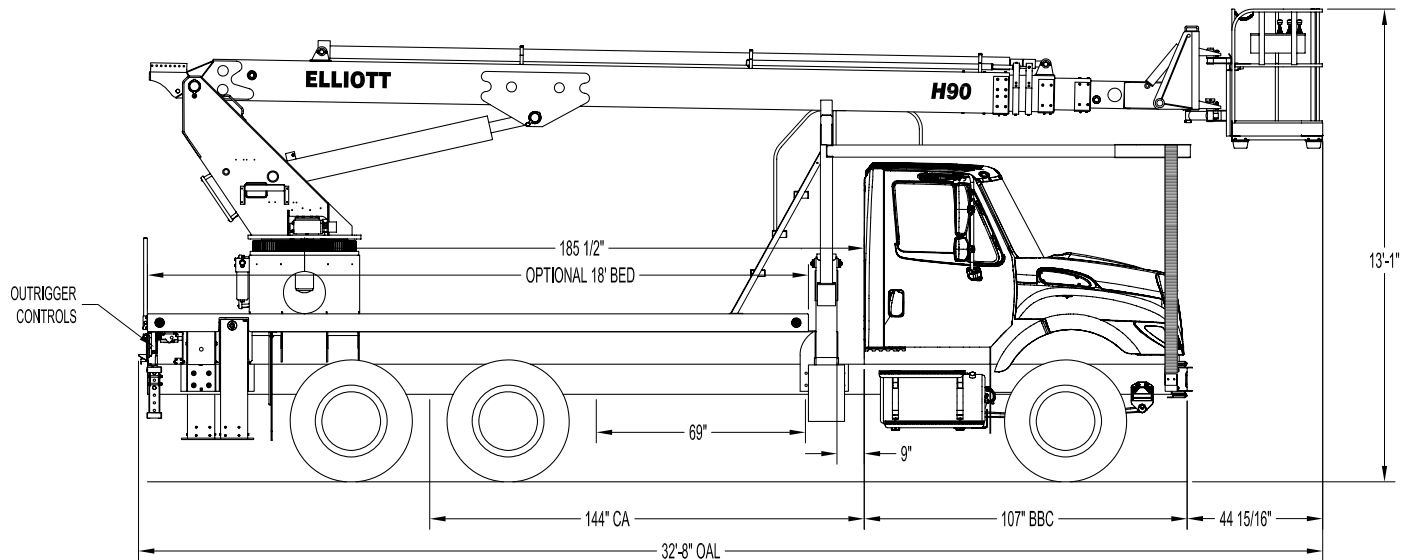


**Line Body**

Let us work with you to customize a line body to secure your tools and supplies the the best way for your application.



### H90R SIDE VIEW DIAGRAM



- **Working Height** 93' / 28,3 m
- **Working Side Reach** 65' / 19,8 m
- **Platform Capacity** 500 lbs / 227 kg
- **Platform Size** 40 x 60 in / 102 x 152 cm
- **Platform Type** EZR
- **Lifting Capacity (Main Winch)** 14,000 lbs / 6350 kg
- **Jib Winch** 500 lbs / 227 kg

- **Powered Boom Sections** 4
- **Overall Height** 13'1" / 4 m
- **Unit Weight (Bare)** 21,000 lbs / 9525 kg
- **Outrigger Spread Main** 18' / 5,5 m
- **Outrigger Spread Auxiliary** 12' / 3,7 m
- **Front Gross Axle Weight Rating** 14,000 lbs / 6350 kg
- **Rear Gross Axle Weight Rating** 40,000 lbs / 18 144 kg

## TECHNICAL SPECIFICATIONS

**Maximum Platform Height:** 85' ground to platform floor.

**Working Range:** 93' max. height and 65' max. side reach.

**Work Platform:** 40x60" EZR end-hung work platform with 40" high rails. Equipped with two safety lanyard attachment loops and two safety harnesses and 72" lanyards. Platform capacity 500 lbs.

**Platform Leveling System:** Hydraulic "closed" system consisting of twin platform cylinders interacting with a boom-actuated master cylinder mounted in boom support turret. System provided with factory-set relief valves to compensate for oil expansion or overload during platform leveling operation. Remote releveling controls provided in platform and at ground controls to give precise releveling capability.

**Platform Controls:** Three individual proportional electronic controllers meter pilot-operated, pressure-compensated modulating valves. Remote controls for boom operations from platform operate from a removable remote control box. Hi/Lo range, start/stop and engine speed toggle controls are also located at platform. Electric remote control cable extends through the electrical slip ring to cable carrier on side of boom to extending boom sections.

**Lower Controls:** Mounted on roadside of turret.

**Outrigger Controls:** Parallel open-center stack valve for lever-operated control of right and left outriggers. The outrigger valves are mounted at the rear, under each corner of the bed with roadside valve controlling roadside outriggers and curbside valve controlling curbside outriggers.

**Outriggers:** "MH" type out and down main outriggers with 18' spread. "A" type auxiliary outriggers with 12' spread.

Elliott Equipment Company reserves the right to change the specification of any unit at any time without prior notice. This brochure is only a statement of general specifications on the date of this publication. For more detailed info on specific Elliott trucks go to [www.elliottequip.com](http://www.elliottequip.com)

**Frame:** One piece, all welded, box-type fabrication with integral outrigger mounts.

**Turret:** Reverse offset turret is one-piece weldment mounted on turret box. Turret rotates on large diameter ball bearing.

**Rotation:** Continuous turret rotation with no stops. Hydraulic motor drives turret through self-locking gear box.

**Boom:** Steel rectangular tube sections. Assembly includes heavy-duty cylinder fittings, pivot pins, and replaceable wear pads.

**Boom Extension:** Two opposing "piggyback" extension cylinders and one overslung cylinder extend the boom sections.

**Lift:** One single-acting full displacement, long stroke cylinder, provides smooth and stable boom elevation. Holding valve prevents boom from falling in event of hose failure.

**Cylinders:** All cylinders use microhoned cylinder tubing, chrome shafts, top grade packing and protective rod wipers. Cylinder-mounted holding valves provided on all load-holding cylinders.

**Hoses:** All high pressure hoses are wire braid reinforced with a minimum safety factor of 4 to 1.

**Oil Tank Capacity:** 70 gallon mounted to truck frame on roadside.

**Hydraulic System:** Operating pressure is 3,000 PSI. System is parallel open center type and is equipped with liquid-filled pressure gauge. Oil is supplied to upper cylinders through hydraulic union in center of turret to cable carrier along side of the boom.

**Pump:** Gear type, direct mount to truck PTO.

**PTO:** Heavy-duty, high-speed. Cable engaged from cab.

**Cab Equipment:** PTO cable or switch with indicator lights installed in truck

cab. Engine speed control and start/stop installed with control switches in platform remote control box and also located at lower controls. U/L approved 5:BC dry chemical fire extinguisher installed in truck cab.

**Operators Manual & Video:** Two CDs and one printed copy of operation, maintenance, safety and parts manual provided with each unit. Operational and safety video provided at delivery.

**Installation:** Unit installed on truck, painted, system and tank filled with oil, tested, inspected, and ready to operate.

**Standard Paint:** Paint boom and turret red, outriggers red, and bed and boxes black. Top of steel bed painted with black nonskid surface.

**Bumper:** Bureau of Motor Carrier Safety rear bumper.

**Weight:** Approximately 21,000 lbs. with 18' steel-floor bed less truck.

**Truck Chassis Required:** Approx. 144" C.T. RBM 2,000,000 in-lb. per rail, 14,000 lb. front axle and 54,000 lb. GVWR required. Trucks must have increased cooling, heavy-duty front and rear springs, 12V electrical system with high capacity alternator, cab clearance stop/tail/backup lights, and I.D. lamps. Recommended GVWR is minimum for HiReach with flatbed only. Contact factory when additional equipment is to be added.

**Options:**

14,000 lb Capacity Boom Winch.

500 lb Capacity Platform Material Handling Jib.

Welder, Air, and 110V Lines to Platform.

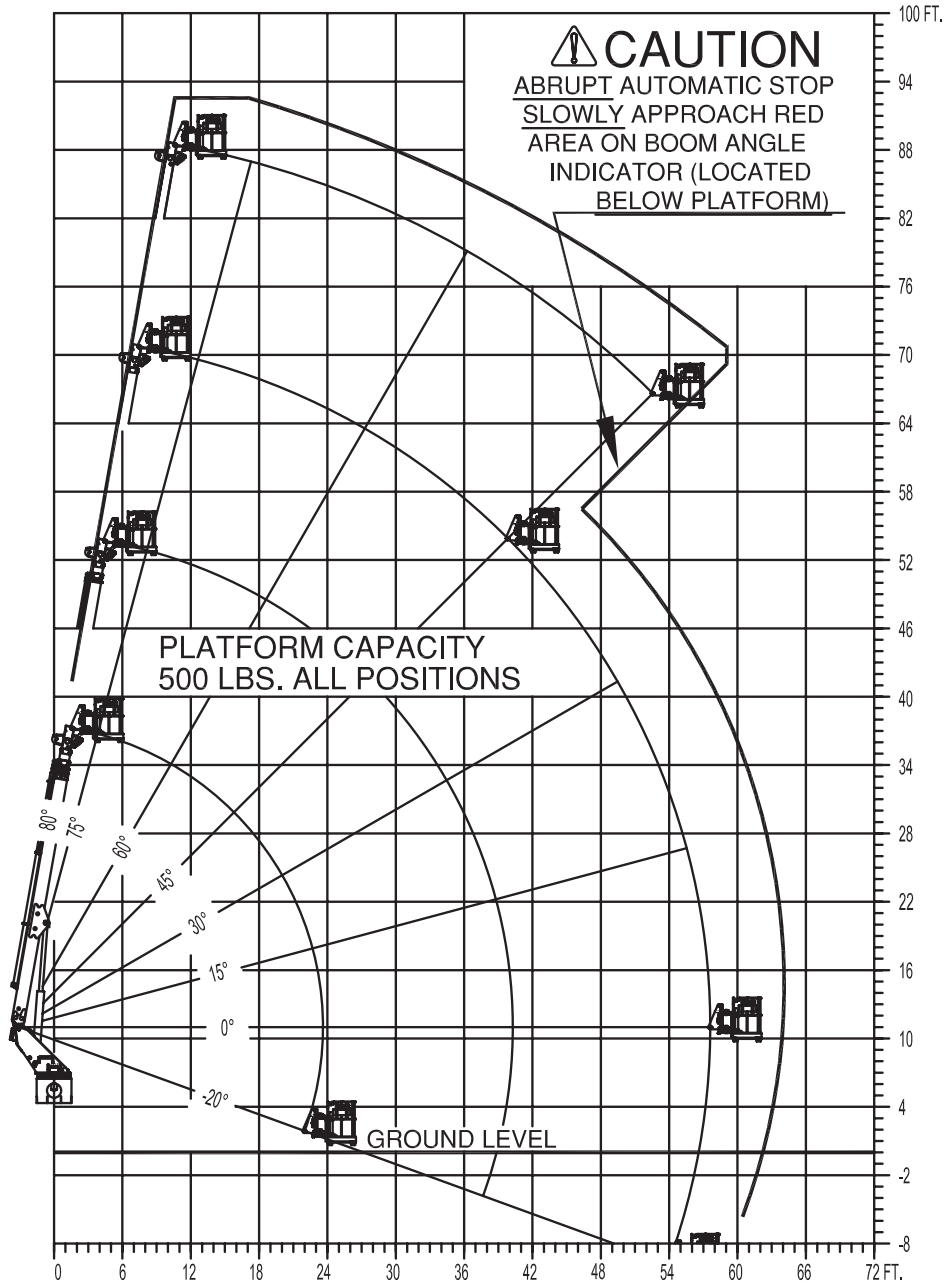
Cab Guard With Platform Access.

Hydraulic Planetary Digger on Boom Tip.

Much More....

MAXIMUM RANGE CAPABILITIES

PLATFORM WORKING RANGE  
MODEL H90



**ELLIOTT**  
EQUIPMENT COMPANY

1062370 120502

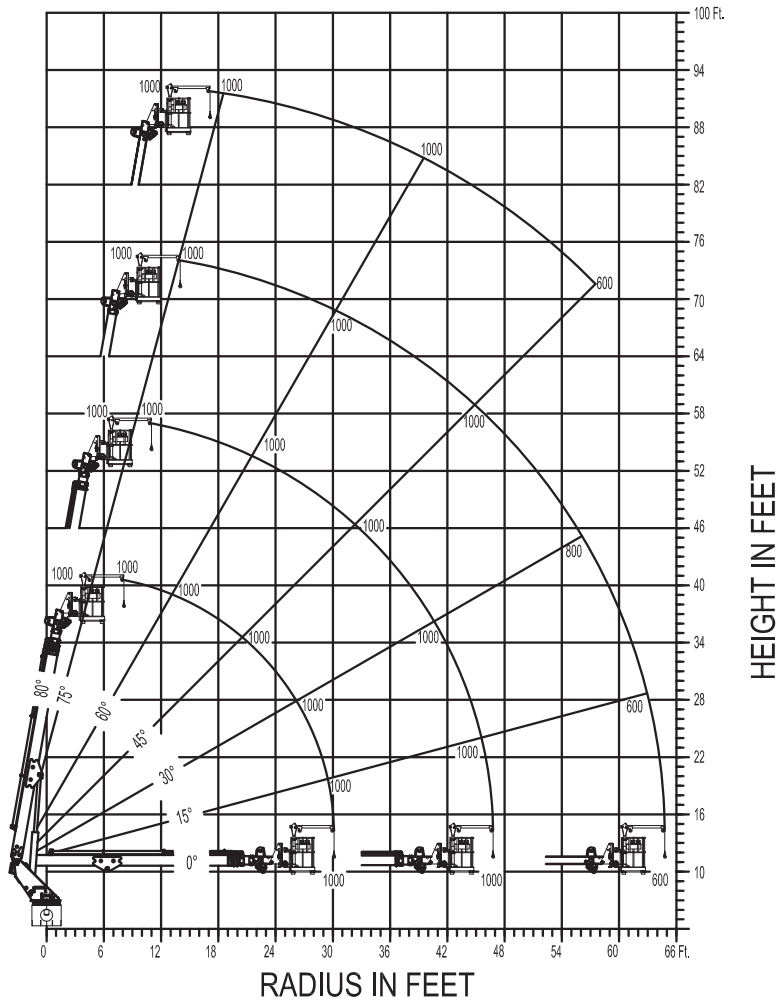
**MAXIMUM JIB LIFTING CAPABILITIES**

**MAXIMUM WORKING LOADS  
PLATFORM JIB OPERATION**

**MODEL H90**

**TOTAL PLATFORM CAPACITY (JIB LOAD PLUS PERSONNEL)**

USE OUTRIGGERS AT ALL TIMES • AVOID JERKING LOAD  
360° BOOM RADIUS



**JIB 500 LBS MAX. PERSONNEL 500 LBS. MAX.**

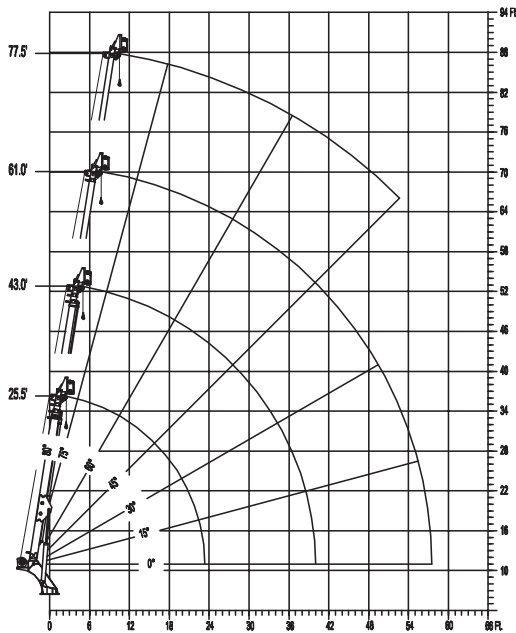
**ELLIOTT**  
EQUIPMENT COMPANY

DO NOT PAINT OVER ANY LABELS

1103580 102805

Elliott Equipment Company reserves the right to change the specification of any unit at any time without prior notice. This brochure is only a statement of general specifications on the date of this publication. For more detailed info on specific Elliott trucks go to [www.elliottequip.com](http://www.elliottequip.com)

**MAXIMUM WINCH LIFTING CAPABILITIES**



1062380 120502

**MAXIMUM WORKING LOADS  
CRANE OPERATION  
MODEL H90**

| RADIUS (FT.) | 25.5' BOOM LENGTH |             | 43.0' BOOM LENGTH |             |
|--------------|-------------------|-------------|-------------------|-------------|
|              | ANGLE (DEG.)      | LOAD (LBS.) | ANGLE (DEG.)      | LOAD (LBS.) |
| 3            | 80                | 14,000      |                   |             |
| 5            | 75                | 8,000       | 80                | 7,000       |
| 8            | 66                | 7,200       | 75                | 5,000       |
| 11           | 60                | 6,000       | 72                | 4,900       |
| 18           | 45                | 5,000       | 64                | 4,600       |
| 19           | 34                | 4,600       | 60                | 4,500       |
| 20           | 30                | 4,500       | 58                | 4,400       |
| 22           | 15                | 4,200       | 55                | 4,300       |
| 23           | 0                 | 4,000       | 53                | 4,300       |
| 28           |                   |             | 45                | 4,100       |
| 34           |                   |             | 30                | 3,700       |
| 38           |                   |             | 15                | 3,300       |
| 40           |                   |             | 0                 | 3,000       |

| RADIUS (FT.) | 61.0' BOOM LENGTH |             | 77.5' BOOM LENGTH |             |
|--------------|-------------------|-------------|-------------------|-------------|
|              | ANGLE (DEG.)      | LOAD (LBS.) | ANGLE (DEG.)      | LOAD (LBS.) |
| 8            | 80                | 4,000       |                   |             |
| 11           | 77                | 3,400       | 80                | 3,000       |
| 13           | 75                | 3,000       | 79                | 2,900       |
| 18           | 70                | 2,800       | 75                | 2,500       |
| 28           | 60                | 2,500       | 67                | 2,200       |
| 36           | 50                | 2,100       | 60                | 2,000       |
| 40           | 45                | 1,900       | 57                | 1,800       |
| 48           | 30                | 1,500       | 49                | 1,400       |
| 53           | 22                | 1,400       | 45                | 1,200       |
| 55           | 15                | 1,300       |                   |             |
| 57           | 0                 | 1,200       |                   |             |

**USE OUTRIGGERS AT ALL TIMES \* AVOID JERKING LOADS  
360° RADIUS \* USE 2 PART LINE FOR LOADS OVER 5000 LBS.  
DEDUCT 125 LBS. WITH BASKET ATTACHED**

1062380 120502

Elliott Equipment Company reserves the right to change the specification of any unit at any time without prior notice. This brochure is only a statement of general specifications on the date of this publication. For more detailed info on specific Elliott trucks go to [www.elliottequip.com](http://www.elliottequip.com)



Elliott Equipment Company Phone: 402-592-4500  
3514 South 25th Street Fax: 402-592-4553  
Omaha, NE 68105 Email: [sales@elliottequip.com](mailto:sales@elliottequip.com)

**Built for You.**  
[www.elliottequip.com](http://www.elliottequip.com)

## CHASSIS DATA

|                                | H90R                   |
|--------------------------------|------------------------|
| Wheelbase (WB)                 | 258" / 655 cm          |
| Cab to Tandem (CT)             | 144" / 488 cm          |
| Cab to End of Frame (EOF)      | 240" / 610 cm          |
| Frame Section Modulus          | 16.6 in3 / 120,000 psi |
| Front Axle Gross Weight Rating | 14,000 lb / 6350 kg    |
| Rear Axle Gross Weight Rating  | 40,000 lb / 18 144 kg  |
| Extended Front Frame           | N/A                    |

Chassis data is minimum general requirements-not for engineering.  
Actual dimensions and truck data will depend on truck selection and axle configuration.

## OPTIONS



### Radio Remote Control

Interference protected radio remotes let you get closer to your work and have full control over your machine.



### Material Handling Jib

Equip your HiReach platform with a material handling jib crane to handle up to 500 lbs from within the work platform.



### Boom-Mounted Winch

Take advantage of the 14,000 lb capacity 2 speed hydraulic winch with 1/2" cable and an optional load indication system.



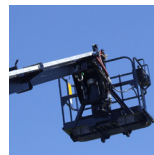
### Outrigger Pad Holders

Outrigger pad holders safely store your pads for travel and leave plenty of room for tool boxes.



### Bed Accessories

Mount a wide variety of tool accessories including welders, power washers, and generators on the bed with lines to the platform.



### Platform Accessories

Choose from a list of platform accessories including 110V outlets, welding leads, hydraulic tools, and much more.



### Outrigger Extensions

Our pin-on outrigger extensions give you extra clearance for work on hills and around guardrails.

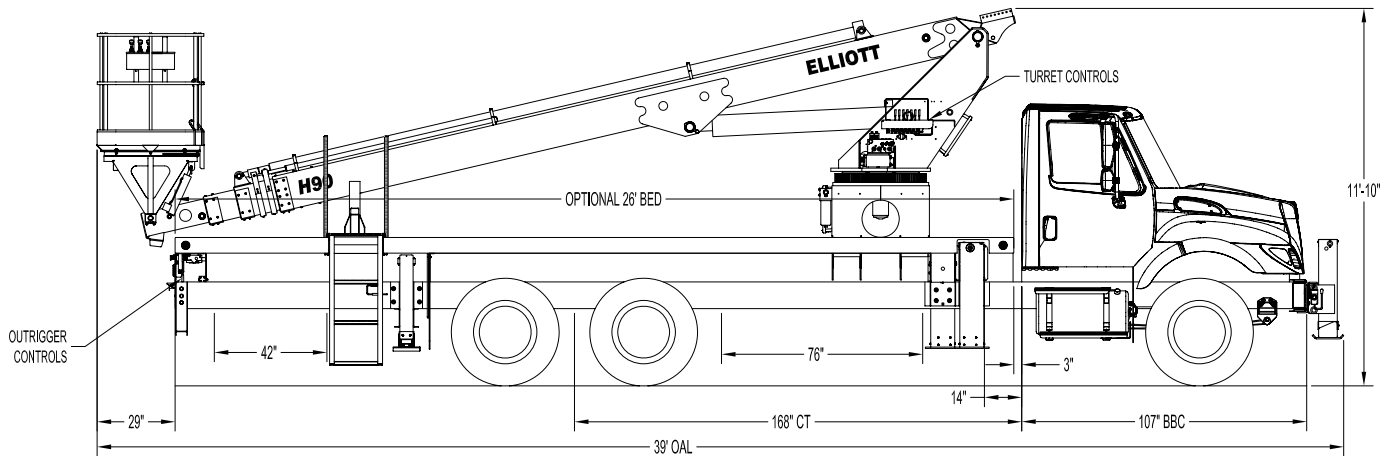


### Line Body

Let us work with you to customize a line body to secure your tools and supplies the the best way for your application.



### H90F SIDE VIEW DIAGRAM



- |  |                           |   |                        |
|--|---------------------------|---|------------------------|
| • <b>Working Height</b>                | 95' / 29 m                | • <b>Powered Boom Sections</b>          | 4                      |
| • <b>Working Side Reach</b>            | 61' / 18,6 m              | • <b>Overall Height</b>                 | 11'10" / 3,6 m         |
| • <b>Platform Capacity</b>             | 600 lbs / 272 kg          | • <b>Unit Weight (Bare)</b>             | 21,000 lbs / 9525 kg   |
| • <b>Platform Size</b>                 | 40 x 60 in / 102 x 152 cm | • <b>Outrigger Spread Main</b>          | 18' / 5,5 m            |
| • <b>Platform Type</b>                 | Top Mount                 | • <b>Outrigger Spread Auxiliary</b>     | 8' / 2,4 m             |
| • <b>Lifting Capacity (Main Winch)</b> | 14,000 lbs / 6350 kg      | • <b>Front Gross Axle Weight Rating</b> | 14,000 lbs / 6350 kg   |
| • <b>Jib Winch</b>                     | 1,000 lbs / 454 kg        | • <b>Rear Gross Axle Weight Rating</b>  | 40,000 lbs / 18 144 kg |

## TECHNICAL SPECIFICATIONS

**Maximum Platform Height:** 90' ground to platform floor.

**Working Range:** 95' max. height and 61' max. side reach.

**Work Platform:** 40x60" Top-Mount work platform with 40" high rails. Equipped with two safety lanyard attachment loops and two safety harnesses and 72" lanyards. Platform capacity 600 lbs.

**Platform Leveling System:** Hydraulic "closed" system consisting of twin platform cylinders interacting with a boom-actuated master cylinder mounted in boom support turret. System provided with factory-set relief valves to compensate for oil expansion or overload during platform leveling operation. Remote releveling controls provided in platform and at ground controls to give precise releveling capability.

**Platform Controls:** Three individual proportional electronic controllers meter pilot-operated, pressure-compensated modulating valves. Boom ground controls are mounted on curbside of turret. Remote controls for boom operations from platform operate from a removable remote control box. Hi/Lo range, start/stop and engine speed toggle controls are also located at platform. Electric remote control cable extends through the electrical slip ring to cable carrier on side of boom to extending boom sections.

**Lower Controls:** Mounted on curbside of turret.

**Outrigger Controls:** Parallel open-center stack valve for lever-operated control of right and left outriggers. The outrigger valves are mounted at the rear, under each corner of the bed with roadside valve controlling roadside outriggers and curbside valve controlling curbside outriggers.

**Outriggers:** "MH" type out-and-down

main outriggers with 18' spread. "A" type underslung secondary outriggers with 8' spread. Front stabilizer mounted to 20" front frame extension.

**Frame:** One piece, all welded, box-type fabrication with integral outrigger mounts.

**Turret:** Reverse offset turret is one-piece weldment mounted on turret box. Turret rotates on large diameter ball bearing.

**Rotation:** Continuous turret rotation with no stops. Hydraulic motor drives turret through self-locking gear box.

**Boom:** Steel rectangular tube sections. Assembly includes heavy-duty cylinder fittings, pivot pins, and replaceable wear pads.

**Boom Extension:** One "overslung" extension cylinder.

**Lift:** One single-acting full displacement, long stroke cylinder, provides smooth and stable boom elevation. Holding valve prevent boom from falling in event of hose failure.

**Cylinders:** All cylinders use microhoned cylinder tubing, chrome shafts, top grade packing and protective rod wipers. Cylinder-mounted holding valves provided on all load-holding cylinders.

**Hoses:** All high pressure hoses are wire braid reinforced with a minimum safety factor of 4 to 1.

**Oil Tank Capacity:** 70 gallon mounted to truck frame on roadside.

**Hydraulic System:** Operating pressure approximately 3,000 PSI. System is parallel open center type and is equipped with liquid-filled pressure gauge. Oil is supplied to upper cylinders through hydraulic union in center of turret to cable carrier along side of the boom.

**Pump:** Gear type, direct mount to truck PTO.

**PTO:** Heavy-duty, high-speed. Cable

engaged from cab.

**Cab Equipment:** PTO with indicator lights installed in truck cab. Engine speed control and start/stop installed with control switches in platform remote control box and also located at lower controls. U/L approved 5:BC dry chemical fire extinguisher installed in truck cab.

**Operators Manual & Video:** Two CDs and one printed copy of operation, maintenance, safety and parts manual provided with each unit. Operational and safety video provided at delivery.

**Installation:** Unit installed on truck, painted, system and tank filled with oil, tested, inspected, and ready to operate.

**Standard Paint:** Paint boom and turret red, outriggers red, and bed and boxes black. Top of bed painted with black nonskid surface.

**Bumper:** Bureau of Motor Carrier Safety rear bumper.

**Weight:** Approximately 27,500 lbs. with 26' steel-floor bed less truck.

**Truck Chassis Required:** Approx. 168" C.T. RBM 2,000,000 in-lb. per rail, 14,000 lb. front axle and 54,000 lb. GVWR required. Trucks must have increased cooling, heavy-duty front and rear springs, 12V electrical system with high capacity alternator, cab clearance stop/tail/backup lights, and I.D. lamps. Extended front frame rails. Recommended GVWR is minimum for HI-REACH with flatbed only. Contact factory when additional equipment is to be added.

**Options:**

14,000 lb Capacity Boom Winch

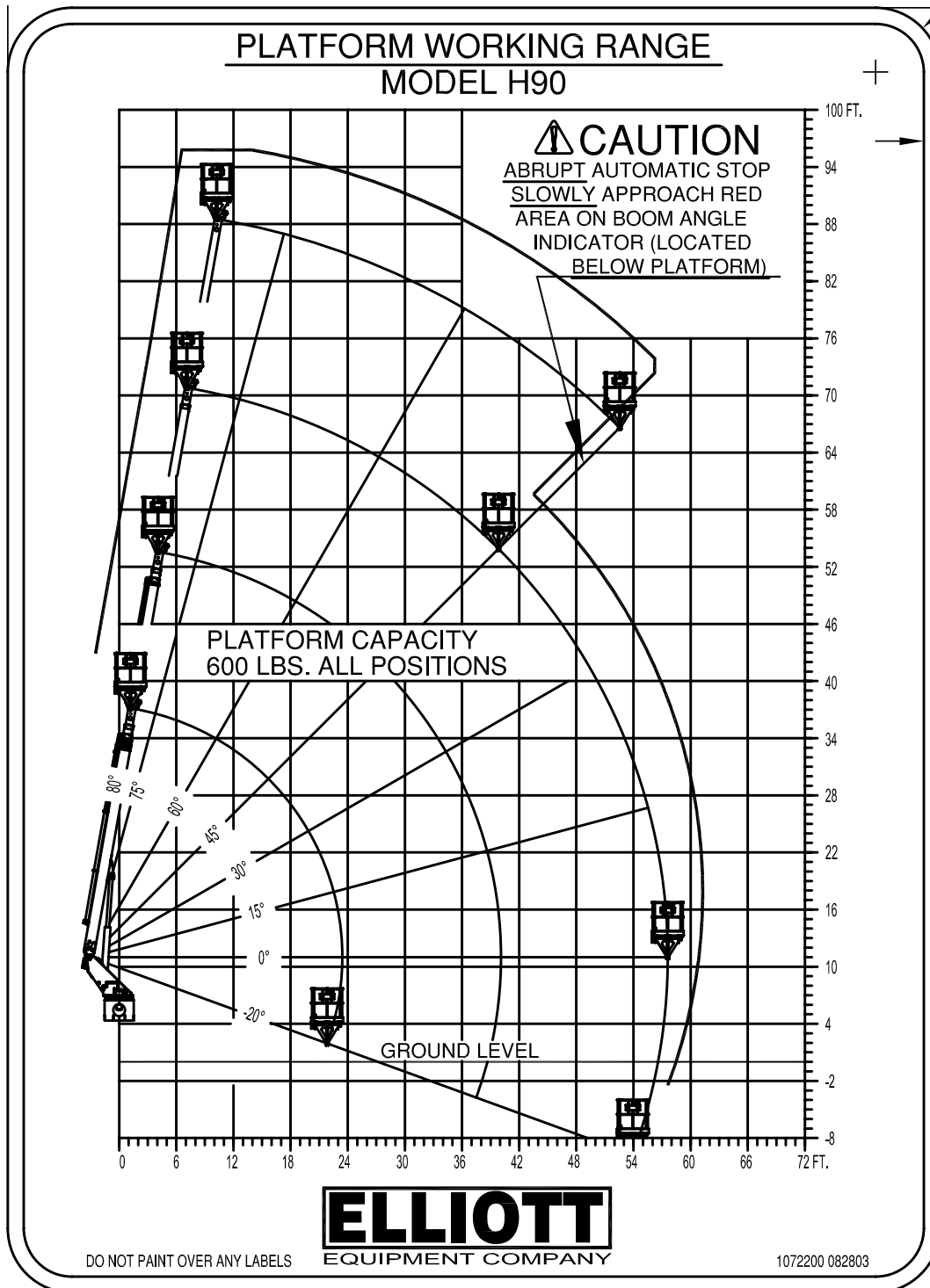
1,000 lb Capacity Platform Jib

Welder, Air, 110V Lines and More to Platform.

Much more....

Elliott Equipment Company reserves the right to change the specification of any unit at any time without prior notice. This brochure is only a statement of general specifications on the date of this publication. For more detailed info on specific Elliott trucks go to [www.elliottequip.com](http://www.elliottequip.com)

MAXIMUM WORKING RANGE

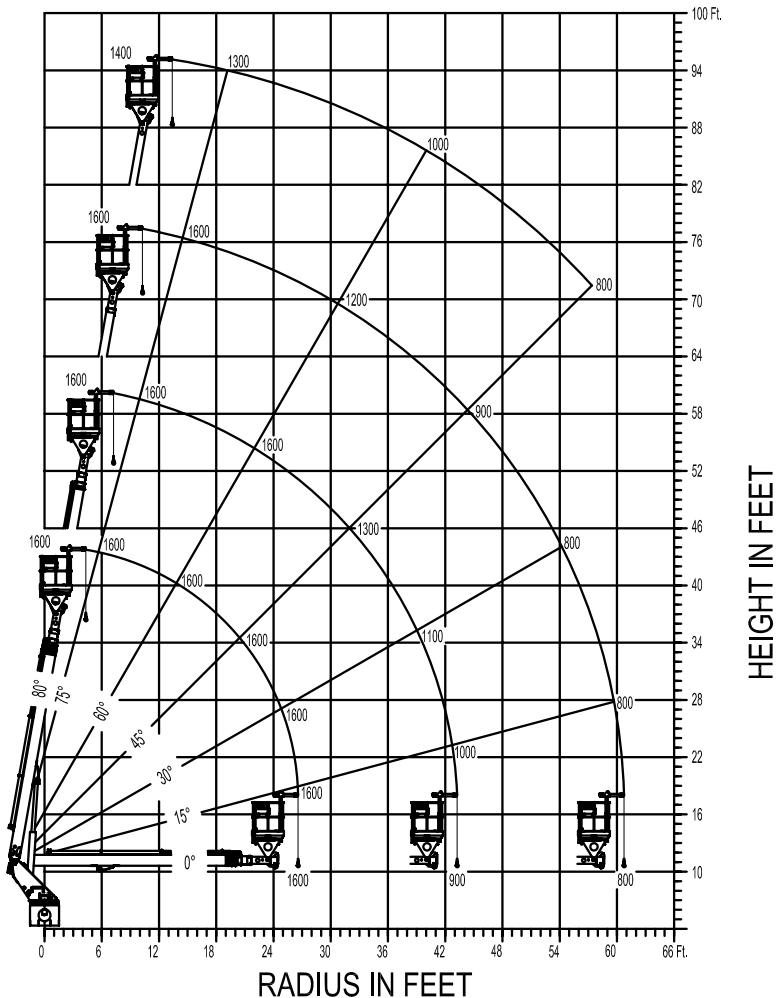


**MAXIMUM JIB WORKING LOADS**

**MAXIMUM WORKING LOADS  
PLATFORM JIB OPERATION  
MODEL H90**

**TOTAL PLATFORM CAPACITY (JIB LOAD PLUS PERSONNEL)**

USE OUTRIGGERS AT ALL TIMES • AVOID JERKING LOAD  
360° BOOM RADIUS



**JIB 1,000 LBS MAX. PERSONNEL 600 LBS. MAX.**



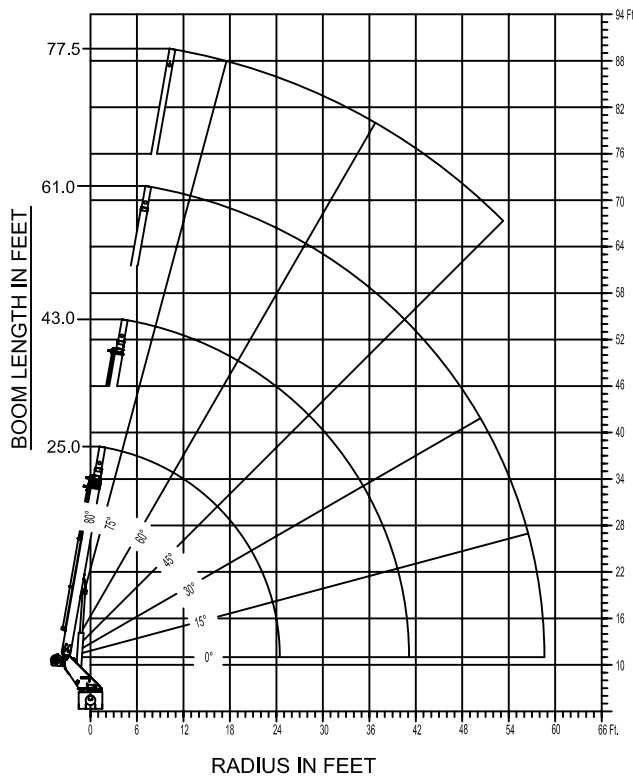
DO NOT PAINT OVER ANY LABELS

1072190 082803

**MAXIMUM BOOM WORKING LOADS**



**MODEL H90**



DO NOT PAINT OVER ANY LABELS

**MAXIMUM WORKING LOADS  
CRANE OPERATION**

WINCH LINE LOAD (POUNDS) ON BOOM  
SHEAVE WITH PLATFORM REMOVED.

| RADIUS (FT.) | 25.5' BOOM LENGTH |             | 43.0' BOOM LENGTH |             |
|--------------|-------------------|-------------|-------------------|-------------|
|              | ANGLE (DEG.)      | LOAD (LBS.) | ANGLE (DEG.)      | LOAD (LBS.) |
| 3            | 80                | 14,000      |                   |             |
| 5            | 75                | 8,000       | 80                | 7,000       |
| 8            | 66                | 7,200       | 75                | 5,000       |
| 11           | 60                | 6,000       | 72                | 4,900       |
| 16           | 45                | 5,000       | 64                | 4,600       |
| 19           | 34                | 4,600       | 60                | 4,500       |
| 20           | 30                | 4,500       | 58                | 4,400       |
| 22           | 15                | 4,200       | 55                | 4,300       |
| 23           | 0                 | 4,000       | 53                | 4,300       |
| 28           |                   |             | 45                | 4,100       |
| 34           |                   |             | 30                | 3,700       |
| 39           |                   |             | 15                | 3,300       |
| 40           |                   |             | 0                 | 3,000       |

| RADIUS (FT.) | 61.0' BOOM LENGTH |             | 77.5' BOOM LENGTH |             |
|--------------|-------------------|-------------|-------------------|-------------|
|              | ANGLE (DEG.)      | LOAD (LBS.) | ANGLE (DEG.)      | LOAD (LBS.) |
| 8            | 80                | 4,000       |                   |             |
| 11           | 77                | 3,400       | 80                | 3,000       |
| 13           | 75                | 3,000       | 79                | 2,900       |
| 18           | 70                | 2,800       | 75                | 2,500       |
| 28           | 60                | 2,500       | 67                | 2,200       |
| 36           | 50                | 2,100       | 60                | 2,000       |
| 40           | 45                | 1,900       | 57                | 1,800       |
| 49           | 30                | 1,500       | 49                | 1,400       |
| 53           | 22                | 1,400       | 45                | 1,200       |
| 55           | 15                | 1,300       |                   |             |
| 57           | 0                 | 1,200       |                   |             |

USE OUTRIGGERS AT ALL TIMES \* AVOID JERKING LOADS 360°  
\* USE 2 PART LINE FOR LOADS OVER 2,500 LBS.  
DEDUCT 500 LBS. WITH PLATFORM ATTACHED

1076700 020803

## CHASSIS DATA

|                                | H90F                                 |
|--------------------------------|--------------------------------------|
| Wheelbase (WB)                 | 236" / 600 cm                        |
| Cab to Tandem (CT)             | 168" / 427 cm                        |
| Cab to End of Frame (EOF)      | 315" / 800 cm                        |
| Frame Section Modulus          | 16.6 in3 / 120,000 psi / 827,371 kPa |
| Front Axle Gross Weight Rating | 14,000 lb / 6350 kg                  |
| Rear Axle Gross Weight Rating  | 40,000 lb / 18 144 kg                |
| Extended Front Frame           | Required                             |

Chassis data is minimum general requirements-not for engineering.  
Actual dimensions and truck data will depend on truck selection and axle configuration.

## OPTIONS



### Radio Remote Control

Interference protected radio remotes let you get closer to your work and have full control over your machine.



### Material Handling Jib

Equip your HiReach platform with a material handling jib crane to handle up to 1,000 pounds.



### Boom-Mounted Winch

Take advantage of the 14,000 lb capacity 2 speed hydraulic winch with 1/2" cable and a load indication system.



### Outrigger Pad Holders

Outrigger pad holders safely store your pads for travel and leave plenty of room for tool boxes.



### Bed Accessories

Mount a wide variety of tool accessories including welders, power washers, and generators on the bed with lines to the platform.



### Platform Accessories

Choose from a list of platform accessories including 110V outlets, welding leads, hydraulic tools, and much more.



### Outrigger Extensions

Our pin-on outrigger extensions give you extra clearance for work on hills and around guardrails.



### Line Body

Let us work with you to customize a line body to secure your tools and supplies the the best way for your application.