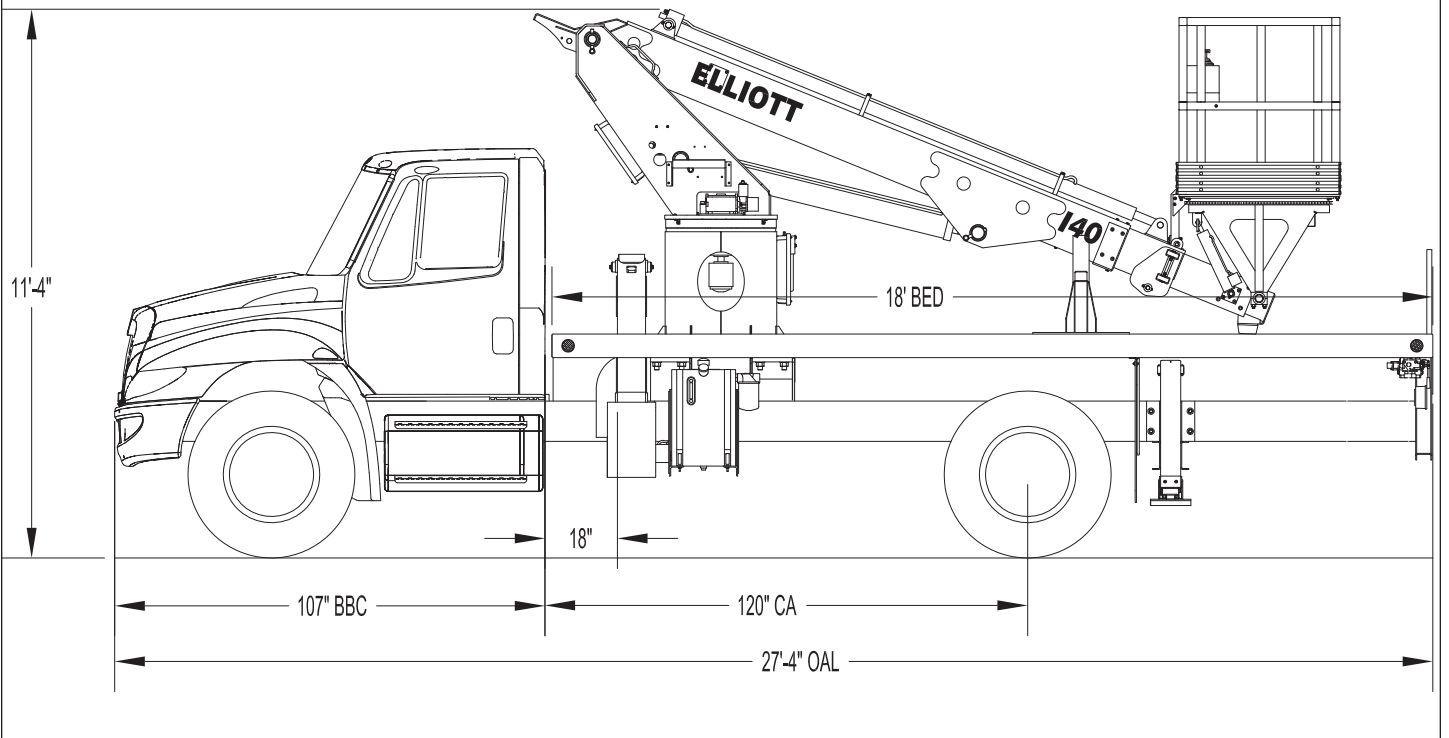


HiReach  
**45 to 65 Feet**





### I40F SIDE VIEW DIAGRAM



- |  |                     |   |                    |
|--|---------------------|---|--------------------|
| • <b>Working Height</b>                | 45'/13,7 m          | • <b>Powered Boom Sections</b>          | 3                  |
| • <b>Working Side Reach</b>            | 30'/9,1 m           | • <b>Overall Height</b>                 | 11'4"/3.5 m        |
| • <b>Platform Capacity</b>             | 600 lbs/272 kg      | • <b>Unit Weight (Bare)</b>             | 16,800 lbs/7620 kg |
| • <b>Platform Size</b>                 | 40x60 in/102x152 cm | • <b>Outrigger Spread Main</b>          | 12'/3,6 m          |
| • <b>Platform Type</b>                 | Insulated Top-Mount | • <b>Outrigger Spread Auxiliary</b>     | 8'/2,4 m           |
| • <b>Lifting Capacity (Main Winch)</b> | 3,650 lbs/1656 kg   | • <b>Front Gross Axle Weight Rating</b> | 10,000 lbs/4536 kg |
| • <b>Insulation Rating</b>             | 46kV Category C     | • <b>Rear Gross Axle Weight Rating</b>  | 19,000 lbs/8618 kg |

**TECHNICAL SPECIFICATIONS**

**Maximum Platform Height:** 40' ground to platform floor.

**Working Range:** 45' max. height and 30' max. side reach.

**Work Platform:** 40x60" Insulated Top-Mount work platform with 40" high fiberglass rails, and a grated fiberglass floor. Equipped with two safety lanyard attachment loops and two safety harnesses and 72" lanyards. Platform capacity 600 lbs.

**Platform Leveling System:** Hydraulic "closed" system consisting of twin platform cylinders interacting with a boom-actuated master cylinder mounted in boom support turret. System provided with factory-set relief valves to compensate for oil expansion or overload during platform leveling operation. Remote releveling controls provided in platform and at ground controls to give precise releveling capability.

**Platform Controls:** Control signals to be transmitted into work platform via plastic fiberoptic "light conduction" from turret control station. Fiberoptic system powered by battery with a backup located in truck cab with 12-volt charger. Single joystick control with finger enable switch in platform to provide boom extension, elevation and rotation controls. Control cable shall extend through the column to the cable carrier and through a fiberglass tube in boom sections. Lower boom controls shall include all general control options including engine speed, start/stop, and upper controls with override.

**Lower Controls:** Mounted on curbside of turret.

**Outrigger Controls:** Parallel open-center stack valve for lever-operated control of right and left outriggers. The outrigger valves are mounted at the rear, under each corner of the bed with roadside valve controlling roadside outriggers and curbside valve controlling Elliott Equipment Company reserves the right to change the specification of any unit at any time without prior notice. This brochure is only a statement of general specifications on the date of this publication. For more detailed info on specific Elliott trucks go to [www.elliottequip.com](http://www.elliottequip.com)

curbside outriggers.

**Outriggers:** "A" type out-and-down main outriggers with 12' spread. "A" type underslung secondary outriggers with 8' spread.

**Frame:** One piece, all welded, box-type fabrication with integral outrigger mounts.

**Turret:** Reverse offset turret is one-piece weldment mounted on turret box. Turret rotates on large diameter ball bearing.

**Rotation:** Continuous turret rotation with no stops. Hydraulic motor drives turret through self-locking gear box.

**Boom:** Steel rectangular tube sections and one fiberglass section 9" high x 7" wide with a 3/4" wall section. Assembly includes heavy-duty cylinder fittings, pivot pins, and replaceable wear pads.

**Boom Extension:** Two opposing "piggyback" extension cylinders extend the boom sections.

**Lift:** One single-acting full displacement, long stroke cylinder, provides smooth and stable boom elevation. Holding valve prevent boom from falling in event of hose failure.

**Cylinders:** All cylinders use microhoned cylinder tubing, chrome shafts, top grade packing and protective rod wipers. Cylinder-mounted holding valves provided on all load-holding cylinders.

**Hoses:** All high pressure hoses are wire braid reinforced with a minimum safety factor of 4 to 1.

**Oil Tank Capacity:** 35 gallon mounted to truck frame on roadside.

**Hydraulic System:** Operating pressure approximately 2,500 PSI. System is parallel open center type and is equipped with liquid-filled pressure gauge. Oil is supplied to upper cylinders through hydraulic union in center of turret to cable carrier along side of the boom.

**Pump:** Gear type, direct mount to truck

PTO.

**PTO:** Heavy-duty, high-speed. Cable engaged from cab.

**Cab Equipment:** PTO cable with indicator lights installed in truck cab. Engine speed control and start/stop installed with control switches in platform remote control box and also located at lower controls. U/L approved 5:BC dry chemical fire extinguisher installed in truck cab.

**Operators Manual & Video:** Two CDs and one printed copy of operation, maintenance, safety and parts manual provided with each unit. Operational and safety video provided at delivery.

**Installation:** Unit installed on truck, painted, system and tank filled with oil, tested, inspected, and ready to operate.

**Standard Paint:** Paint boom and turret red, outriggers red, and bed and boxes black. Top of bed painted with black nonskid surface.

**Bumper:** Bureau of Motor Carrier Safety rear bumper.

**Weight:** Approximately 10,000 lbs. with 18' steel-floor bed less truck.

**Truck Chassis Required:** Approx. 120" C.A., RBM 900,000 in-lb. per rail, 10,000 lb. front axle and minimum 25,999 lb. GVWR required. Trucks must have increased cooling, heavy-duty front and rear springs, 12V electrical system with high capacity alternator, cab clearance stop/tail/backup lights, and I.D. lamps. Recommended GVWR is minimum for HiReach with flatbed only. Contact factory when additional equipment is to be added.

**Options:**

3,650 or 2,000 lb Capacity Boom Winch  
500 lb Capacity Platform Jib Attachment  
Much More...

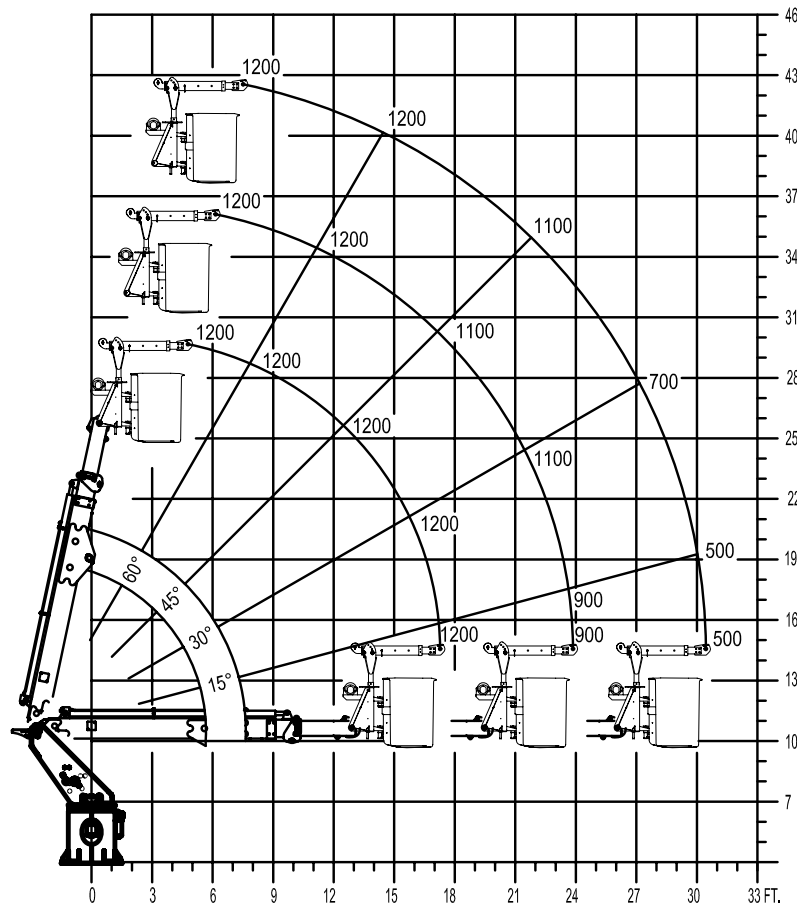
MAXIMUM WORKING LOADS

MAXIMUM WORKING LOADS  
PLATFORM JIB OPERATION

MODEL I40

TOTAL LIFT CAPACITY (JIB LOAD PLUS PERSONNEL)

AVOID JERKING LOAD - 360° RADIUS



JIB 1,000 LBS. MAX PERSONNEL 600 LBS. MAX

**ELLIOTT**  
EQUIPMENT COMPANY

DO NOT PAINT OVER ANY LABELS

1164740 060310

## CHASSIS DATA

	I40F
Wheelbase (WB)	187" / 475 cm
Cab to Axle (CA)	120" / 305 cm
Cab to End of Frame (EOF)	220" / 559 cm
Frame Section Modulus	9.0 in3 / 110,000 psi
Front Axle Gross Weight Rating	10,000 lb / 4536 kg
Rear Axle Gross Weight Rating	19,000 lb / 8618 kg
Extended Front Frame	Not Required

Chassis data is minimum general requirements-not for engineering.  
Actual dimensions and truck data will depend on truck selection and axle configuration.

## OPTIONS



### Radio Remote Control

Interference protected radio remotes hard-wired to the platform let you get closer to your work and have full control over your machine.



### Material Handling Jib

Equip your HiReach platform with a material handling jib crane to handle up to 500 pounds from within arm's reach..



### MH Outriggers With Shortjacking

Reduce outrigger spread with MH outriggers behind the cab and Elliott's Automatic Safety Rotation Lockout to operate your HiReach in confined spaces.



### Outrigger Pad Holders

Outrigger pad holders safely store your pads for travel and leave plenty of room for tool boxes.



### Bed Accessories

Mount a wide variety of tool accessories including welders, power washers, and generators on the bed with lines to the platform.



### Platform Accessories

Choose from a list of platform accessories including 110V outlets, welding leads, hydraulic tools, and much more.



### Outrigger Extensions

Our pin-on outrigger extensions give you extra clearance for work on hills and around guardrails.

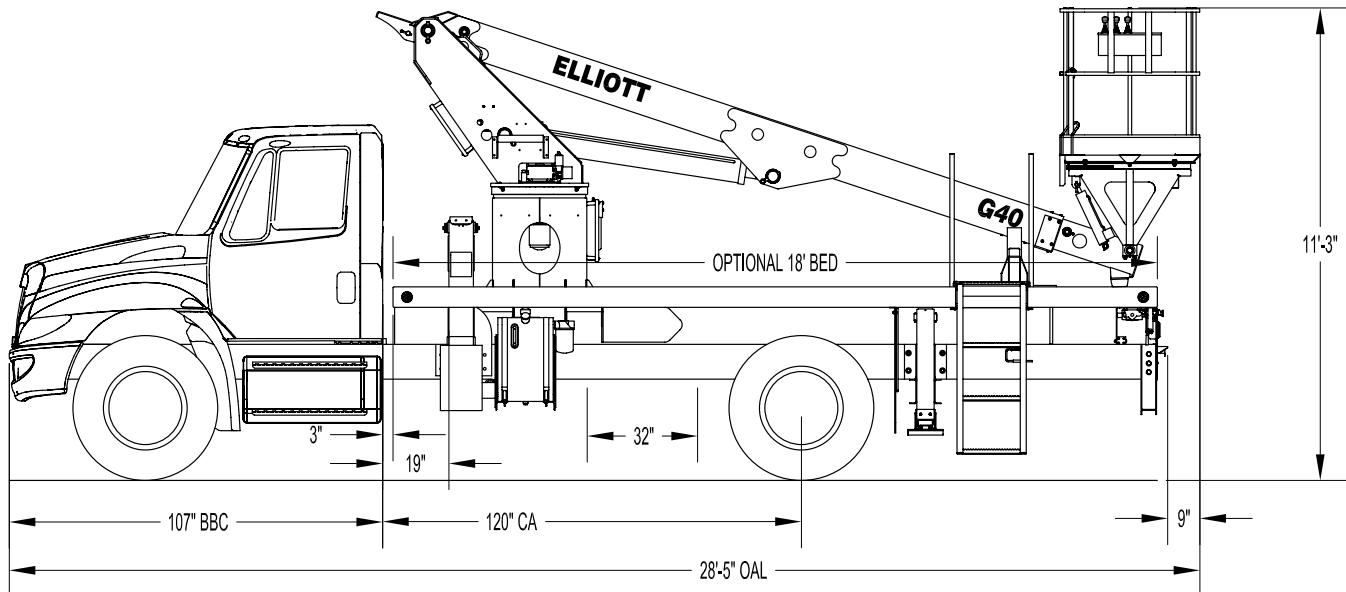


### Line Body

Let us work with you to customize a line body to secure your tools and supplies the the best way for your application.



### G40F SIDE VIEW DIAGRAM



- |  |                           |   |                       |
|--|---------------------------|---|-----------------------|
| • <b>Working Height</b>                | 45' / 13,7 m              | • <b>Powered Boom Sections</b>          | 2                     |
| • <b>Working Side Reach</b>            | 30' / 9,1 m               | • <b>Overall Height</b>                 | 11'3" / 3,4 m         |
| • <b>Platform Capacity</b>             | 1,000 lbs / 454 kg        | • <b>Unit Weight (Bare)</b>             | 10,000 lbs / 4,536 kg |
| • <b>Platform Size</b>                 | 40 x 60 in / 102 x 152 cm | • <b>Outrigger Spread Main</b>          | 12'6" / 3,8 m         |
| • <b>Platform Type</b>                 | Top-Mount                 | • <b>Outrigger Spread Auxiliary</b>     | 8' / 2,4 m            |
| • <b>Lifting Capacity (Main Winch)</b> | 5,900 lbs / 2,676 kg      | • <b>Front Gross Axle Weight Rating</b> | 10,000 lbs / 4,536 kg |
| • <b>Jib Winch</b>                     | 1,000 lbs / 454 kg        | • <b>Rear Gross Axle Weight Rating</b>  | 19,000 lbs / 8,618 kg |

## TECHNICAL SPECIFICATIONS

**Maximum Platform Height:** 40' ground to platform floor.

**Working Range:** 45' max. height and 30' max. side reach.

**Work Platform:** 40" x 60" Top-Mount work platform with 40" high rails. Equipped with two safety lanyard attachment loops and two safety harnesses and 72" lanyards. Platform capacity 1,000 lbs.

**Platform Leveling System:** Hydraulic "closed" system consisting of twin platform cylinders interacting with a boom-actuated master cylinder mounted in boom support turret. System provided with factory-set relief valves to compensate for oil expansion or overload during platform leveling operation. Remote releveling controls provided in platform and at ground controls to give precise releveling capability.

**Platform Controls:** Three individual proportional electronic controllers meter pilot-operated, pressure-compensated modulating valves. Boom ground controls are mounted on curbside of turret. Remote controls for boom operations from platform operate from a removable remote control box. Hi/Lo range, start/stop and engine speed toggle controls are also located at platform. Electric remote control cable extends through the electrical slip ring to cable carrier on side of boom to extending boom sections.

**Lower Controls:** Mounted on curbside of turret.

**Outrigger Controls:** Parallel open-center stack valve for lever-operated control of right and left outriggers. The outrigger valves are mounted at the rear, under each corner of the bed with roadside valve controlling roadside outriggers and curbside valve controlling curbside outriggers.

**Outriggers:** "A" type out-and-down

main outriggers with 12'6" spread. "A" type underslung secondary outriggers with 8' spread.

**Frame:** One piece, all welded, box-type fabrication with integral outrigger mounts.

**Turret:** Reverse offset turret is one-piece weldment mounted on turret box. Turret rotates on large diameter ball bearing.

**Rotation:** Continuous turret rotation with no stops. Hydraulic motor drives turret through self-locking gear box.

**Boom:** Steel rectangular tube sections. Assembly includes heavy-duty cylinder fittings, pivot pins, and replaceable wear pads.

**Boom Extension:** Two opposing "piggyback" extension cylinders extend the boom sections.

**Lift:** One single-acting full displacement, long stroke cylinder, provides smooth and stable boom elevation. Holding valve prevent boom from falling in event of hose failure.

**Cylinders:** All cylinders use microhoned cylinder tubing, chrome shafts, top grade packing and protective rod wipers. Cylinder-mounted holding valves provided on all load-holding cylinders.

**Hoses:** All high pressure hoses are wire braid reinforced with a minimum safety factor of 4 to 1.

**Oil Tank Capacity:** 35 gallon mounted to truck frame on roadside.

**Hydraulic System:** Operating pressure approximately 2,500 PSI. System is parallel open center type and is equipped with liquid-filled pressure gauge. Oil is supplied to upper cylinders through hydraulic union in center of turret to cable carrier along side of the boom.

**Pump:** Gear type, direct mount to truck PTO.

**PTO:** Heavy-duty, high-speed. Cable

engaged from cab.

**Cab Equipment:** PTO cable with indicator lights installed in truck cab. Engine speed control and start/stop installed with control switches in platform remote control box and also located at lower controls. U/L approved 5:BC dry chemical fire extinguisher installed in truck cab.

**Operators Manual & Video:** Two CDs and one printed copy of operation, maintenance, safety and parts manual provided with each unit. Operational and safety video provided at delivery.

**Installation:** Unit installed on truck, painted, system and tank filled with oil, tested, inspected, and ready to operate.

**Standard Paint:** Paint boom and turret red, outriggers red, and bed and boxes black. Top of steel bed painted with black nonskid surface.

**Bumper:** Bureau of Motor Carrier Safety rear bumper.

**Weight:** Approximately 10,000 lbs. with 18' steel-floor bed less truck.

**Truck Chassis Required:** Approx. 120" C.A. RBM 900,000 in-lb. per rail, 10,000 lb. front axle and 25,999 lb. GVWR required. Trucks must have increased cooling, heavy-duty front and rear springs, 12V electrical system with high capacity alternator, cab clearance stop/tail/backup lights, and I.D. lamps. Recommended GVWR is minimum for HiReach with flatbed only. Contact factory when additional equipment is to be added.

**Options:**

5,900 lb Capacity Boom Winch

1,000 lb Capacity Platform Jib Winch

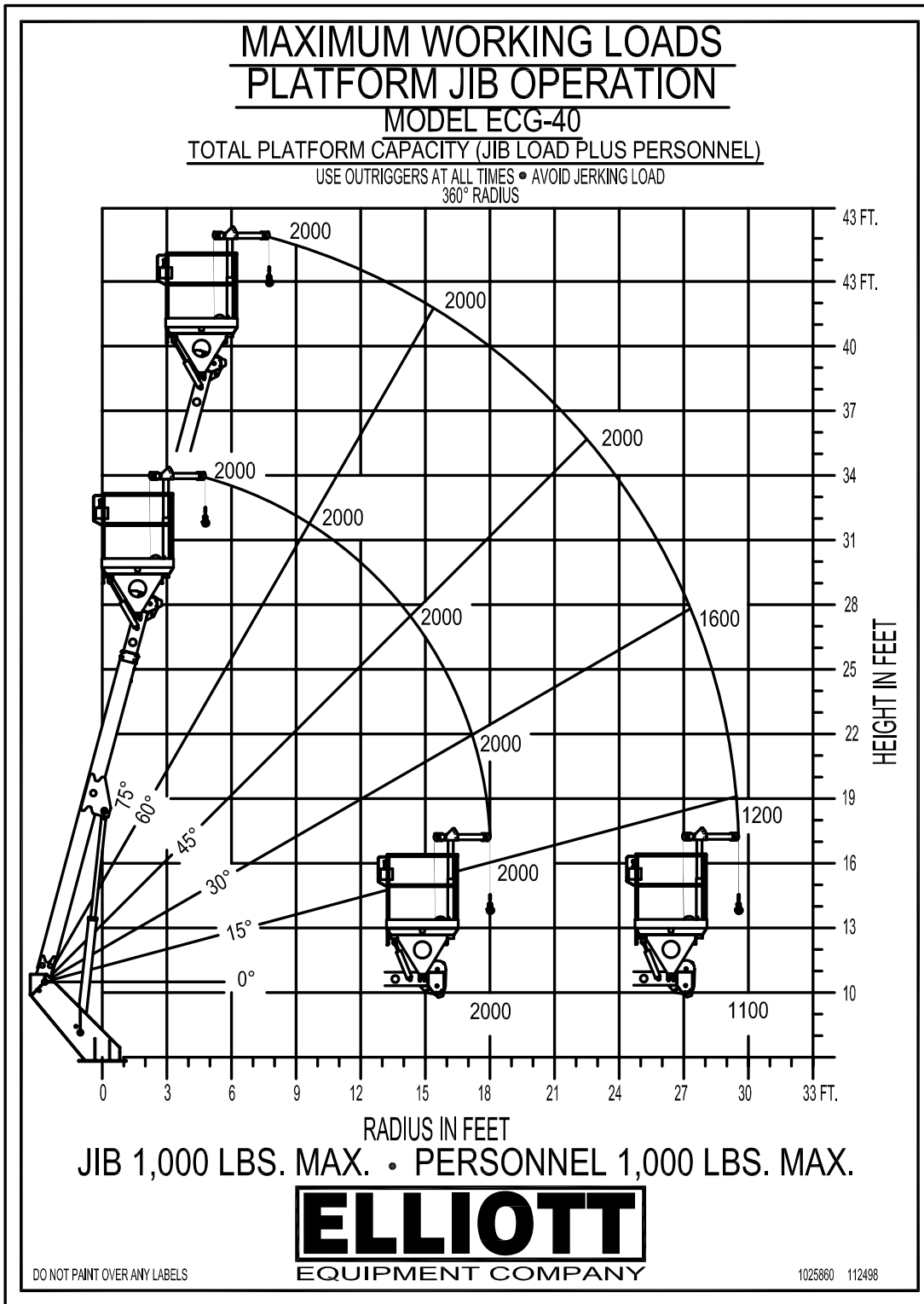
Welder, Air, 110V Lines and More to Platform.

Custom Toolboxes

Much More....

Elliott Equipment Company reserves the right to change the specification of any unit at any time without prior notice. This brochure is only a statement of general specifications on the date of this publication. For more detailed info on specific Elliott trucks go to [www.elliottequip.com](http://www.elliottequip.com)

**MAXIMUM RANGE CAPABILITIES**



**MAXIMUM LIFTING CAPABILITIES**

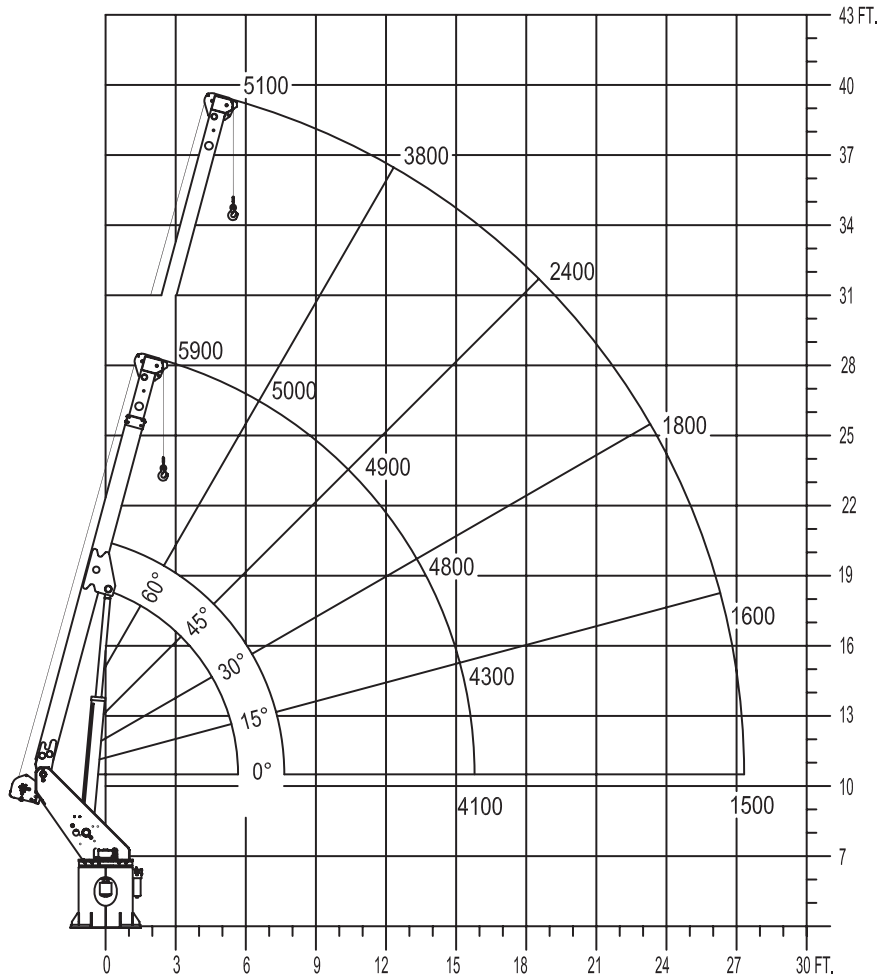
**MAXIMUM WORKING LOADS  
CRANE OPERATION**

**MODEL G40**

WINCH LINE LOAD (POUNDS) WITH BUCKETS OR PLATFORM REMOVED

USE OUTRIGGERS AT ALL TIMES • AVOID JERKING LOAD

360° RADIUS • DEDUCT FOR DOWNHAUL WEIGHT • USE 2 PART LINE FOR LOADS OVER 2700 LBS



**DEDUCT 400 LBS. WITH BUCKETS OR PLATFORM ATTACHED**

**ELLIOTT**

**EQUIPMENT COMPANY**

DO NOT PAINT OVER ANY LABELS

1068100 040103

## CHASSIS DATA

	G40F
Wheelbase (WB)	187" / 475 cm
Cab to Axle (CA)	120" / 305 cm
Cab to End of Frame (EOF)	220" / 559 cm
Frame Section Modulus	9.0 in3 / 110,000 psi
Front Axle Gross Weight Rating	10,000 lb / 4,536 kg
Rear Axle Gross Weight Rating	19,000 lb / 8,618 kg
Extended Front Frame	Not Applicable

Chassis data is minimum general requirements-not for engineering.  
Actual dimensions and truck data will depend on truck selection and axle configuration.

## OPTIONS



### Radio Remote Control

Interference protected radio remotes let you get closer to your work and have full control over your machine.



### Material Handling Jib

Equip your HiReach platform with a material handling jib crane to handle up to 1,000 lbs from within arm's reach.



### Boom-Mounted Winch

Take advantage of the 5,900 lb capacity 2 speed hydraulic winch with 1/2" cable and a load indication system.



### Outrigger Pad Holders

Outrigger pad holders safely store your pads for travel and leave plenty of room for tool boxes.



### Bed Accessories

Mount a wide variety of tool accessories including welders, power washers, and generators on the bed with lines to the platform.



### Platform Accessories

Choose from a list of platform accessories including 110V outlets, welding leads, hydraulic tools, and much more.



### Custom Design Engineering

Customize your HiReach by adding lights, tools, special paint, and much more. Let Elliott's engineering team design the right configuration for your business.

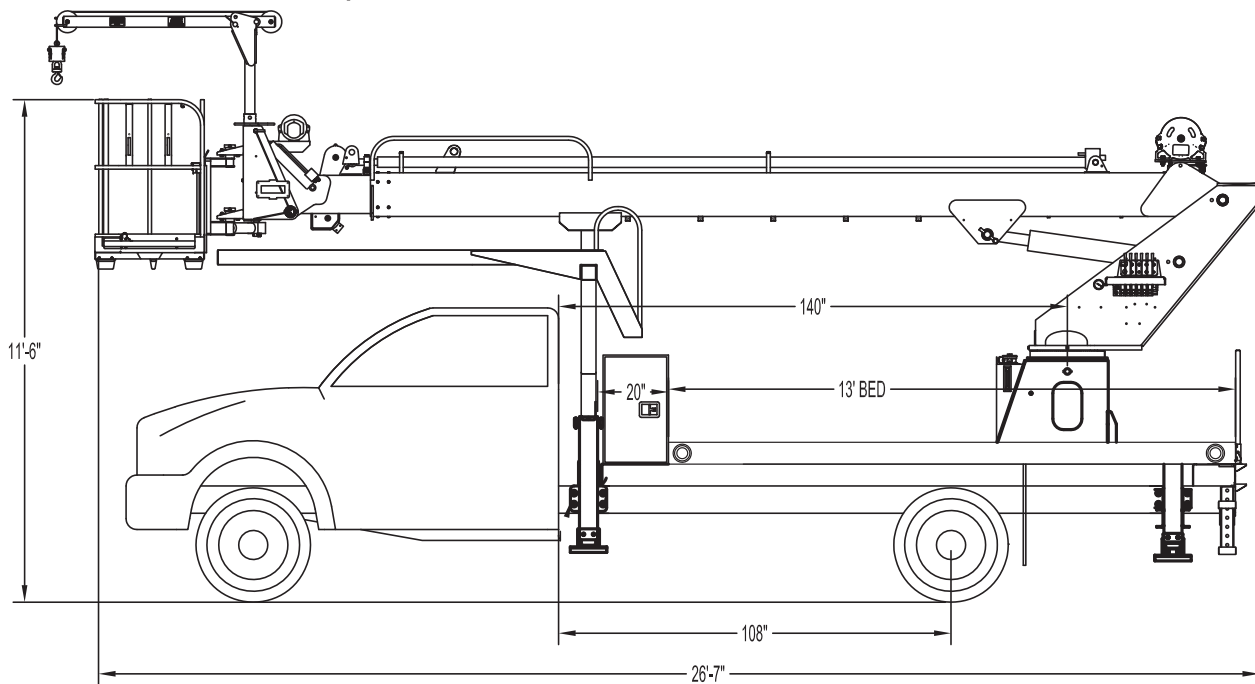


### Line Body

Let us work with you to customize a line body to secure your tools and supplies the the best way for your application.



### M43 SIDE VIEW DIAGRAM



Dimensions approximate and vary with truck specifications.

- |  |                         |   |                      |
|--|-------------------------|---|----------------------|
| • <b>Working Height</b>                | 48' / 14,6 m            | • <b>Powered Boom Sections</b>          | 2                    |
| • <b>Working Side Reach</b>            | 38' / 11,6 m            | • <b>Overall Height</b>                 | 11'6" / 3,5 m        |
| • <b>Platform Capacity</b>             | 500 lbs / 227 kg        | • <b>Unit Weight (Bare)</b>             | 8,500 lbs / 3855 kg  |
| • <b>Platform Size</b>                 | 30" x 54" / 76 x 137 cm | • <b>Outrigger Spread Main</b>          | 10'5" / 3,2 m        |
| • <b>Platform Type</b>                 | End-Hung                | • <b>Outrigger Spread Auxiliary</b>     | 8' / 2,4 m           |
| • <b>Lifting Capacity (Main Winch)</b> | 2,000 lbs / 907 kg      | • <b>Front Gross Axle Weight Rating</b> | 7,000 lbs / 3175 kg  |
| • <b>Jib Winch</b>                     | 500 lbs / 227 kg        | • <b>Rear Gross Axle Weight Rating</b>  | 12,500 lbs / 5670 kg |

## TECHNICAL SPECIFICATIONS

**Maximum Platform Height:** 43' ground to platform floor.

**Working Range:** 48' max. working height and 38' max. side reach.

**Work Platform:** 30"x54" EZR end-hung work platform with 40" high rails. Equipped with two safety lanyard attachment loops and two safety harnesses and 72" lanyards. Platform capacity 500 lbs.

**Platform Leveling System:** Hydraulic system consisting of twin platform cylinders interacting with electro-proportional level sensing system. Remote releveling controls provided in platform and at ground controls to give precise leveling capability.

**Platform Controls:** Three individual proportional electronic controllers meter pilot-operated, pressure-compensated modulating valves. Remote controls for boom operations from platform operate from a removable remote control box. Hi/Lo range, start/stop and engine speed toggle controls are also located at platform. Electric remote control cable extends through the electrical slip ring to cable carrier on side of boom to extending boom sections.

**Lower Controls:** Mounted on roadside of turret.

**Outrigger Controls:** Parallel open-center valve for lever-operated control of right and left outriggers. The outrigger valves are mounted at the rear, under each corner of the bed with roadside valve controlling roadside outriggers and curbside valve controlling curbside outriggers.

**Outriggers:** Vertical stabilizers with 8' spread and "A" type underslung outriggers with 10'5" spread.

**Frame:** One piece, all welded, box-type fabrication.

**Turret:** Reverse offset turret is one-piece weldment mounted on turret box. Turret

rotates on large diameter ball bearing.

**Rotation:** Continuous turret rotation with no stops. Hydraulic motor drives turret through self-locking gear box.

**Boom:** Steel rectangular tube sections. Assembly includes heavy-duty cylinder fittings, pivot pins, and replaceable wear pads.

**Boom Extension:** Single extension cylinder to extend the boom section.

**Lift:** One single-acting full displacement, long stroke cylinder, provides smooth and stable boom elevation. Holding valve prevents boom from falling in event of hose failure.

**Cylinders:** All cylinders use microhoned cylinder tubing, chrome shafts, top grade packing and protective rod wipers. Cylinder-mounted holding valves provided on all load-holding cylinders.

**Hoses:** All high pressure hoses are wire braid reinforced with a minimum safety factor of 4 to 1.

**Oil Tank Capacity:** 18 gallon mounted to turret box.

**Hydraulic System:** Operating pressure is 2,250 PSI. System is parallel open center type and is equipped with liquid-filled pressure gauge. Oil is supplied to upper cylinders through hydraulic union in center of turret to cable carrier inside of the boom.

**Pump:** Gear type, direct mount to truck PTO.

**PTO:** Heavy-duty, high-speed with switch in cab.

**Cab Equipment:** PTO switch with indicator lights installed in truck cab. Engine speed control and start/stop installed with control switches in platform remote control box and also located at lower controls. U/L approved 5:BC dry chemical fire extinguisher installed in truck cab.

**Operators Manual & Video:** Two CDs and one printed copy of operation, maintenance, safety and parts manual provided with each unit. Operational and safety video provided at delivery.

**Installation:** Unit installed on truck, painted, system and tank filled with oil, tested, inspected, and ready to operate.

**Standard Paint:** Paint boom and turret red, outriggers red, and bed and boxes black. Top of steel bed painted with black nonskid surface.

**Bumper:** Bureau of Motor Carrier Safety rear bumper.

**Weight:** Approximately 8,500 lbs. with 13' steel-floor bed less truck.

**Truck Chassis Required:** Approx. 108" C.A., 7,000 lb. front axle and 19,500 lb. GVWR required. Trucks must have increased cooling, heavy-duty front and rear springs, 12V electrical system with high capacity alternator, cab clearance stop/tail/backup lights, and I.D. lamps. Recommended GVWR is minimum for HiReach with flatbed only. Contact factory when additional equipment is to be added.

### Options:

500 lb Capacity Platform Material Handling Jib

2,000 lb Capacity Material Handling Main Winch

110 Volt Line to Platform

Welder Leads to Platform

Cab Guard Walkway to Platform

98" x 18" x 18" Steel Cross Body Box

Custom Toolbox Packages

Modified Outriggers for Larger Chassis

Custom Paint Packages

Much More....

Elliott Equipment Company reserves the right to change the specification of any unit at any time without prior notice. This brochure is only a statement of general specifications on the date of this publication. For more detailed info on specific Elliott trucks go to [www.elliottequip.com](http://www.elliottequip.com)

**MAXIMUM WINCH LIFTING CAPACITY**

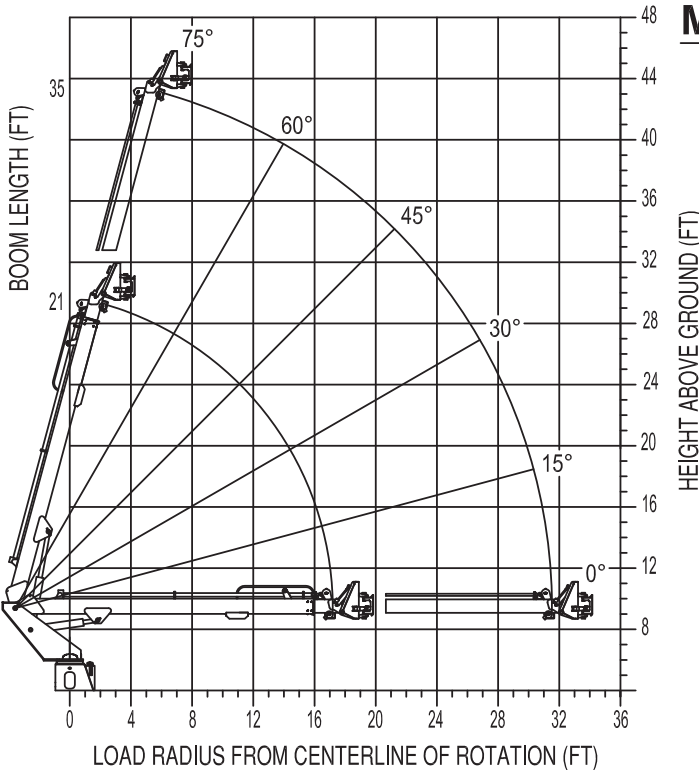


**MODEL M43**

**MAIN BOOM LOAD RATINGS**

**WITH PLATFORM REMOVED\***

**\*DEDUCT 350 LBS WITH PLATFORM ATTACHED**



HEIGHT ABOVE GROUND (FT)

MAIN BOOM LOAD RATINGS				
LOAD RADIUS (FT)	21' BOOM LENGTH		35' BOOM LENGTH	
	ANGLE (DEG)	LOAD (LBS)	ANGLE (DEG)	LOAD (LBS)
3	75	2,000	-	-
6	65	2,000	75	2,000
8	58	2,000	72	2,000
10	51	2,000	69	2,000
12	43	1,400	65	1,600
14	34	1,200	61	1,400
16	21	1,100	57	1,100
18	-	-	53	800
22	-	-	45	700
27	-	-	31	650
30	-	-	18	550
-	0	1,100	0	500

**USE OUTRIGGERS AT ALL TIMES**

**AVOID JERKING LOADS · 360° RADIUS**

DO NOT PAINT OVER ANY LABELS

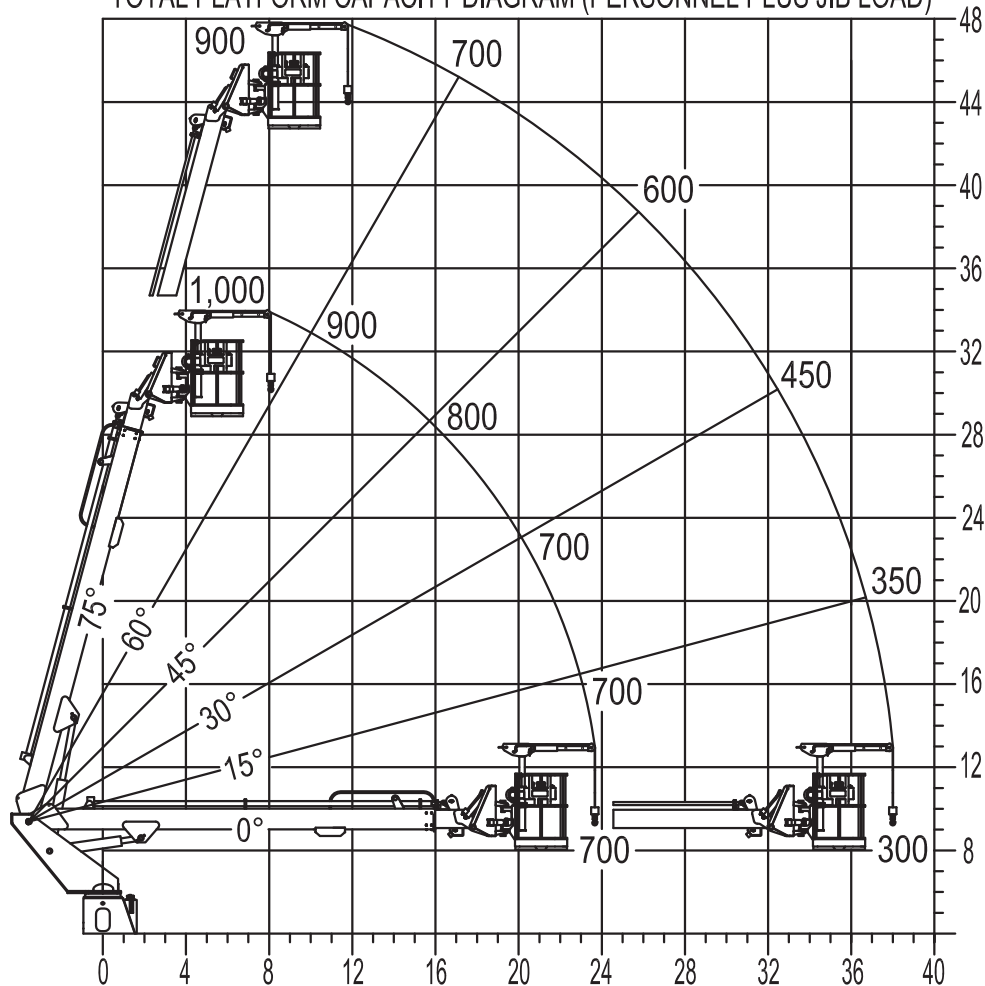
1220450 120516

**MAXIMUM JIB LIFTING CAPACITY**

**ELLIOTT** **MODEL M43**  
EQUIPMENT COMPANY  
**MAXIMUM WORKING LOADS**  
**PLATFORM AND JIB OPERATION**

**MAX PLATFORM CAPACITY: 500 LBS**    **MAX JIB CAPACITY: 500 LBS**

TOTAL PLATFORM CAPACITY DIAGRAM (PERSONNEL PLUS JIB LOAD)



**USE OUTRIGGERS AT ALL TIMES · AVOID JERKING LOADS · 360° RADIUS**

DO NOT PAINT OVER ANY LABELS

1219500 120516

## CHASSIS DATA

	M43
Wheelbase (WB)	192.5" / 489 cm
Cab to Axle (CA)	108" / 274 cm
Cab to End of Frame (EOF)	190" / 483 cm
Front Axle Gross Weight Rating	7,000 lb / 3175 kg
Rear Axle Gross Weight Rating	12,500 lb / 5670 kg
Extended Front Frame	N/A

Chassis data is minimum general requirements-not for engineering.  
Actual dimensions and truck data will depend on truck selection and axle configuration.

## OPTIONS



### Walkway Access to Platform

Choose Elliott's optional steel platform walkway above the cab for easy platform access with the boom stowed in the over-cab position.



### Material Handling Jib

Equip your HiReach platform with a stowable material handling jib winch to handle up to 500 pounds from within the work platform.



### Material Handling Main Boom Winch

Elliott's 2,000 lb capacity hydraulic main winch allows for lifting loads using the lower turret controls with the platform attached or removed.



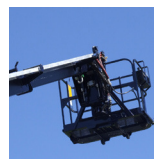
### Outrigger Pad Holders

Outrigger pad holders safely store your pads for travel and easy removal on the job site with reduced strain. Available for wood or synthetic pads.



### Bed Accessories

Mount a wide variety of tool accessories including welders and generators on the bed with leads to the platform.



### Platform Accessories

Choose from a list of platform accessories including 110V outlets, welding leads and more using the oversized external cable carrier outside the boom.



### Custom Design Engineering

Customize your HiReach by adding lights, tools, special paint, and much more. Let Elliott's engineering team design the right configuration for your business.

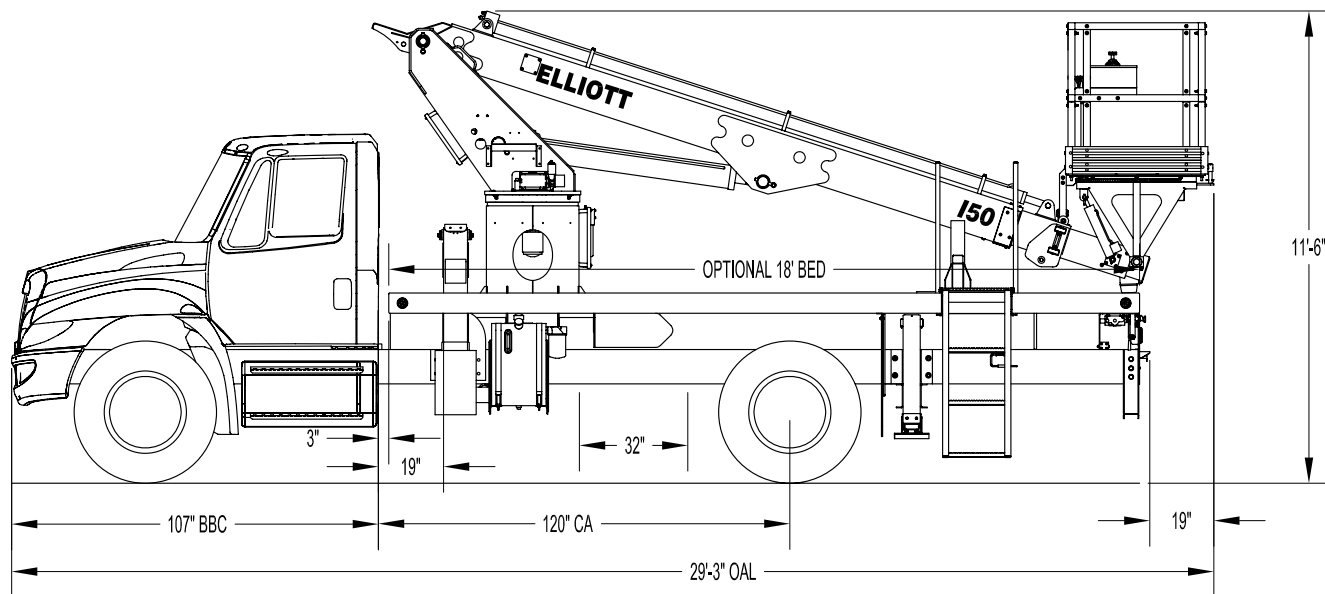


### Line Body

Let us work with you to customize a line body to secure your tools and supplies the the best way for your application.



### 150 SIDE VIEW DIAGRAM



- **Working Height** 55' / 16,8 m
- **Working Side Reach** 40' / 12,2 m
- **Platform Capacity** 600 lbs / 272 kg
- **Platform Size** 40" x 60" / 102 x 152 cm
- **Platform Type** Insulated Top-Mount
- **Lifting Capacity (Main Winch)** 3,650 lbs / 1656 kg
- **Insulation Rating** 46kV Category C

- **Powered Boom Sections** 3
- **Overall Height** 11'6" / 3,4 m
- **Unit Weight (Bare)** 11,500 lbs / 5216 kg
- **Outrigger Spread Main** 12'6" / 3,8 m
- **Outrigger Spread Auxiliary** 8' / 2,4 m
- **Front Gross Axle Weight Rating** 10,000 lbs / 4536 kg
- **Rear Gross Axle Weight Rating** 19,000 lbs / 8618 kg

## TECHNICAL SPECIFICATIONS

**Maximum Platform Height:** 50' ground to platform floor.

**Working Range:** 55' max. working height and 40' max. side reach.

**Work Platform:** 40"x60" insulated top-mounted work platform with 40" high fiberglass rails, and a grated fiberglass floor. Equipped with two safety lanyard attachment loops and two safety harnesses and 72" lanyards. Platform capacity 600 lbs.

**Platform Leveling System:** Hydraulic "closed" system consisting of twin platform cylinders interacting with a boom-actuated master cylinder mounted in boom support turret. System provided with factory-set relief valves to compensate for oil expansion or overload during platform leveling operation. Remote releveling controls provided in platform and at ground controls to give precise releveling capability.

**Platform Controls:** Control signals to be transmitted into work platform via plastic fiberoptic "light conduction" from turret control station. Fiberoptic system powered by battery with a backup located in truck cab with 12-volt charger. Single joystick control with finger enable switch in platform to provide boom extension, elevation and rotation controls. Control cable shall extend through the column to the cable carrier and through a fiberglass tube in boom sections. Lower boom controls shall include all general control options including engine speed, start/stop, and upper controls with override.

**Lower Controls:** Mounted on curbside of turret.

**Outrigger Controls:** Parallel open-center stack valve for lever-operated control of right and left outriggers. The outrigger valves are mounted at the rear, under each corner of the bed with roadside valve controlling

roadside outriggers and curbside valve controlling curbside outriggers.

**Outriggers:** "A" type out-and-down main outriggers with 12' spread. "A" type underslung secondary outriggers with 8' spread.

**Frame:** One piece, all welded, box-type fabrication with integral outrigger mounts.

**Turret:** Reverse offset turret is one-piece weldment mounted on turret box. Turret rotates on large diameter ball bearing.

**Rotation:** Continuous turret rotation with no stops. Hydraulic motor drives turret through self-locking gear box.

**Boom:** Steel rectangular tube sections and one fiberglass section 9" high x 7" wide with a 3/4" wall section. Assembly includes heavy-duty cylinder fittings, pivot pins, and replaceable wear pads.

**Boom Extension:** Two opposing "piggyback" extension cylinders extend the boom sections.

**Lift:** One single-acting full displacement, long stroke cylinder, provides smooth and stable boom elevation. Holding valve prevent boom from falling in event of hose failure.

**Cylinders:** All cylinders use microhoned cylinder tubing, chrome shafts, top grade packing and protective rod wipers. Cylinder-mounted holding valves provided on all load-holding cylinders.

**Hoses:** All high pressure hoses are wire braid reinforced with a minimum safety factor of 4 to 1.

**Oil Tank Capacity:** 35 gallon mounted to truck frame on roadside.

**Hydraulic System:** Operating pressure approximately 2,500 PSI. System is parallel open center type and is equipped with liquid-filled pressure gauge. Oil is supplied to upper cylinders through hydraulic union in center of turret to

cable carrier along side of the boom.

**Pump:** Gear type, direct mount to truck PTO.

**PTO:** Heavy-duty, high-speed.

**Cab Equipment:** PTO switch with indicator lights installed in truck cab. Engine speed control and start/stop installed with control switches in platform remote control box and also located at lower controls. U/L approved 5:BC dry chemical fire extinguisher installed in truck cab.

**Operators Manual & Video:** Two CDs and one printed copy of operation, maintenance, safety and parts manual provided with each unit. Operational and safety video provided at delivery.

**Installation:** Unit installed on truck, painted, system and tank filled with oil, tested, inspected, and ready to operate.

**Standard Paint:** Paint boom and turret red, outriggers red, and bed and boxes black. Top of bed painted with black nonskid surface.

**Bumper:** Bureau of Motor Carrier Safety rear bumper.

**Weight:** Approximately 11,500 lbs. with 18' steel-floor bed less truck.

**Truck Chassis Required:** Approx. 120" C.A., RBM 900,000 in-lb. per rail, 10,000 lb. front axle and 25,999 lb. GVWR required. Trucks must have increased cooling, heavy-duty front and rear springs, 12V electrical system with high capacity alternator, cab clearance stop/tail/backup lights, and I.D. lamps. Recommended GVWR is minimum for HiReach with flatbed only. Contact factory when additional equipment is to be added.

**Options:**

3,650 or 2,000 lb Capacity Boom Winch  
500 lb Capacity Platform Jib Attachment  
Much More...

Elliott Equipment Company reserves the right to change the specification of any unit at any time without prior notice. This brochure is only a statement of general specifications on the date of this publication. For more detailed info on specific Elliott trucks go to [www.elliottequip.com](http://www.elliottequip.com)

MAXIMUM WORKING LOADS - JIB WINCH

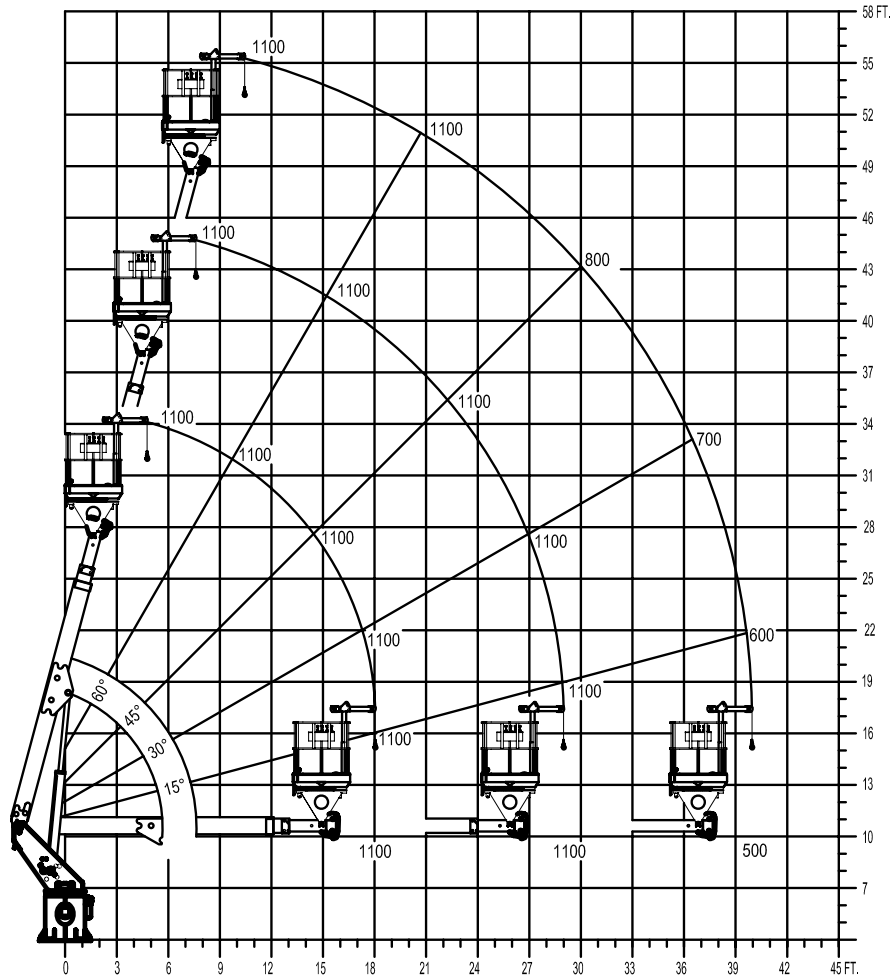
# MAXIMUM WORKING LOADS PLATFORM JIB OPERATION

## MODEL I50

TOTAL PLATFORM CAPACITY (JIB LOAD PLUS PERSONNEL)

USE OUTRIGGERS AT ALL TIMES • AVOID JERKING LOAD

360° RADIUS



JIB 500 LBS. MAX PERSONNEL 600 LBS. MAX

# ELLIOTT

EQUIPMENT COMPANY

1132950 080107

**MAXIMUM WORKING LOADS - MAIN WINCH**

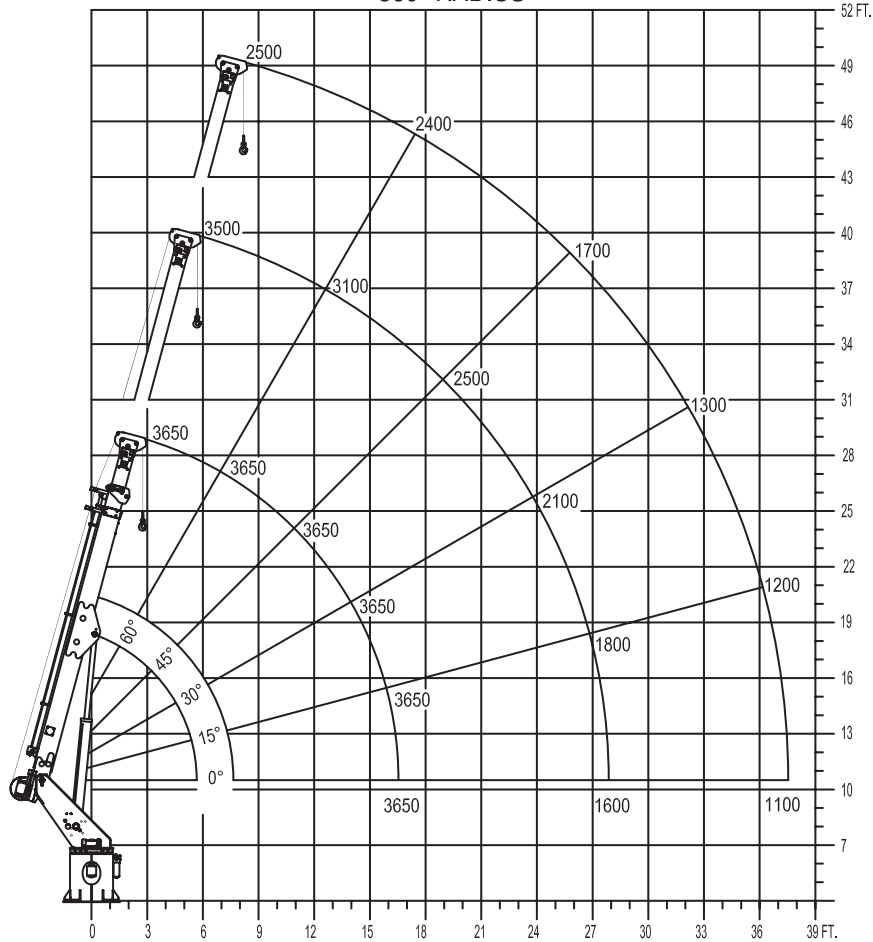
**MAXIMUM WORKING LOADS  
CRANE OPERATION**

**MODEL 150**

**WINCH LINE LOAD (POUNDS) WITH BUCKETS OR PLATFORM REMOVED**

**USE OUTRIGGERS AT ALL TIMES · AVOID JERKING LOAD**

**360° RADIUS**



**DEDUCT 400 POUNDS WITH BUCKETS OR PLATFORM ATTACHED**

**ELLIOTT**  
EQUIPMENT COMPANY

DO NOT PAINT OVER ANY LABELS

1076030 042604

## CHASSIS DATA

	150
Wheelbase (WB)	187" / 475 cm
Cab to Axle (CA)	120" / 305 cm
Cab to End of Frame (EOF)	220" / 559 cm
Frame Section Modulus	9.0 in3 / 110,000 psi
Front Axle Gross Weight Rating	10,000 lb / 4536 kg
Rear Axle Gross Weight Rating	19,000 lb / 8618 kg
Extended Front Frame	Not Required

Chassis data is minimum general requirements-not for engineering.  
Actual dimensions and truck data will depend on truck selection and axle configuration.

## OPTIONS



### Radio Remote Control

Interference protected radio remotes hard-wired to the platform let you get closer to your work and have full control over your machine.



### Material Handling Jib

Equip your HiReach platform with a material handling jib winch to handle up to 500 pounds from within arm's reach.



### MH Outriggers With Shortjacking

Reduce outrigger spread with MH outriggers behind the cab and Elliott's Automatic Safety Rotation Lockout to operate your HiReach in confined spaces.



### Outrigger Pad Holders

Outrigger pad holders safely store your pads for travel and leave plenty of room for tool boxes.



### Bed Accessories

Mount a wide variety of tool accessories including welders, power washers, and generators on the bed with lines to the platform.



### Platform Accessories

Choose from a list of platform accessories including 110V outlets, welding leads, hydraulic tools, and much more.



### Outrigger Extensions

Our pin-on outrigger extensions give you extra clearance for work on hills and around guardrails.

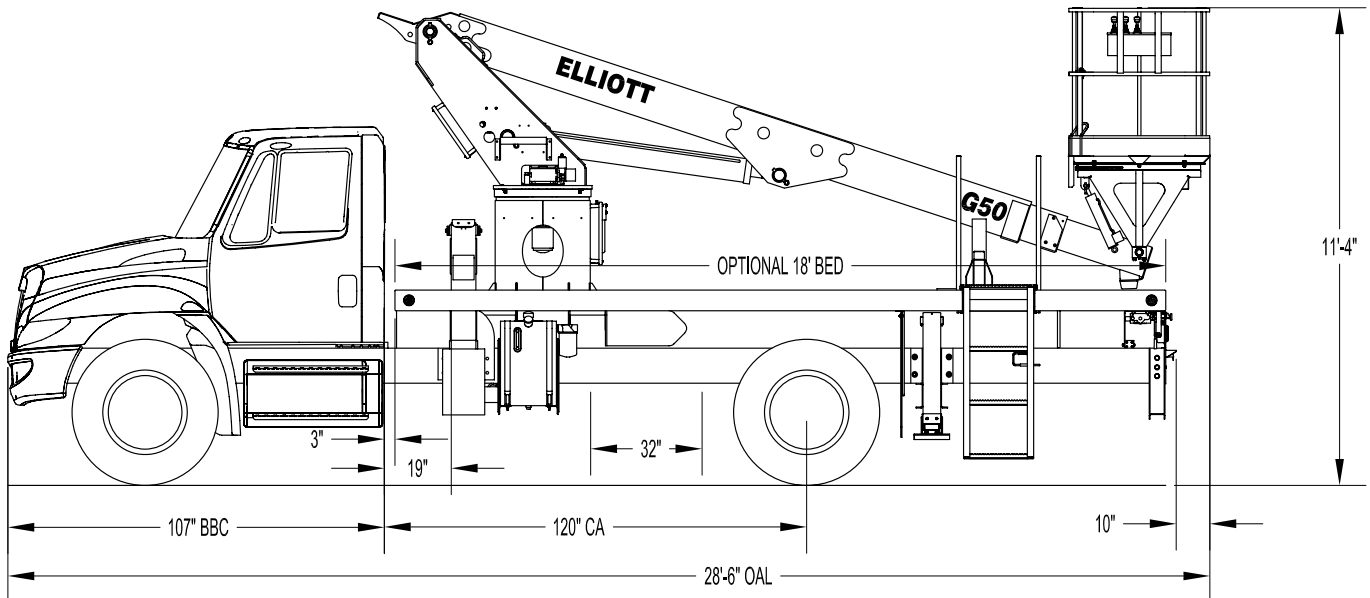


### Line Body

Let us work with you to customize a line body to secure your tools and supplies the the best way for your application.



### G50F SIDE VIEW DIAGRAM



- |  |                           |   |                       |
|--|---------------------------|---|-----------------------|
| • <b>Working Height</b>                | 55' / 16,8 m              | • <b>Powered Boom Sections</b>          | 3                     |
| • <b>Working Side Reach</b>            | 41' / 12,5 m              | • <b>Overall Height</b>                 | 11'4" / 3,4 m         |
| • <b>Platform Capacity</b>             | 600 lbs / 272 kg          | • <b>Unit Weight (Bare)</b>             | 11,000 lbs / 4,989 kg |
| • <b>Platform Size</b>                 | 40 x 60 in / 102 x 152 cm | • <b>Outrigger Spread Main</b>          | 12'6" / 3,8 m         |
| • <b>Platform Type</b>                 | Top-Mount                 | • <b>Outrigger Spread Auxiliary</b>     | 8' / 2,4 m            |
| • <b>Lifting Capacity (Main Winch)</b> | 5,900 lbs / 2676 kg       | • <b>Front Gross Axle Weight Rating</b> | 10,000 lbs / 4536 kg  |
| • <b>Jib Winch</b>                     | 1,000 lbs / 454 kg        | • <b>Rear Gross Axle Weight Rating</b>  | 19,000 lbs / 8618 kg  |

## TECHNICAL SPECIFICATIONS

**Maximum Platform Height:** 50' ground to platform floor.

**Working Range:** 55' max. height and 41' max. side reach.

**Work Platform:** 40"x60" Top-Mount work platform with 40" high rails. Equipped with two safety lanyard attachment loops and two safety harnesses and 72" lanyards. Platform capacity 600 lbs.

**Platform Leveling System:** Hydraulic "closed" system consisting of twin platform cylinders interacting with a boom-actuated master cylinder mounted in boom support turret. System provided with factory-set relief valves to compensate for oil expansion or overload during platform leveling operation. Remote releveling controls provided in platform and at ground controls to give precise releveling capability.

**Platform Controls:** Three individual proportional electronic controllers meter pilot-operated, pressure-compensated modulating valves. Boom ground controls are mounted on curbside of turret. Remote controls for boom operations from platform operate from a removable remote control box. Hi/Lo range, start/stop and engine speed toggle controls are also located at platform. Electric remote control cable extends through the electrical slip ring to cable carrier on side of boom to extending boom sections.

**Lower Controls:** Mounted on curbside of turret.

**Outrigger Controls:** Parallel open-center stack valve for lever-operated control of right and left outriggers. The outrigger valves are mounted at the rear, under each corner of the bed with roadside valve controlling roadside outriggers and curbside valve controlling curbside outriggers.

**Outriggers:** "A" type main outriggers

with 12'6" spread. "A" type underslung secondary outriggers with 8' spread.

**Frame:** One piece, all welded, box-type fabrication with integral outrigger mounts.

**Turret:** Reverse offset turret is one-piece weldment mounted on turret box. Turret rotates on large diameter ball bearing.

**Rotation:** Continuous turret rotation with no stops. Hydraulic motor drives turret through self-locking gear box.

**Boom:** Steel rectangular tube sections. Assembly includes heavy-duty cylinder fittings, pivot pins, and replaceable wear pads.

**Boom Extension:** Two opposing "piggyback" extension cylinders extend the boom sections.

**Lift:** One single-acting full displacement, long stroke cylinder, provides smooth and stable boom elevation. Holding valve prevent boom from falling in event of hose failure.

**Cylinders:** All cylinders use microhoned cylinder tubing, chrome shafts, top grade packing and protective rod wipers. Cylinder-mounted holding valves provided on all load-holding cylinders.

**Hoses:** All high pressure hoses are wire braid reinforced with a minimum safety factor of 4 to 1.

**Oil Tank Capacity:** 35 gallon mounted to truck frame on roadside.

**Hydraulic System:** Operating pressure approximately 2,500 PSI. System is parallel open center type and is equipped with liquid-filled pressure gauge. Oil is supplied to upper cylinders through hydraulic union in center of turret to cable carrier along side of the boom.

**Pump:** Gear type, direct mount to truck PTO.

**PTO:** Heavy-duty, high-speed. Cable engaged from cab.

**Cab Equipment:** PTO cable with indicator lights installed in truck cab. Engine speed control and start/stop installed with control switches in platform remote control box and also located at lower controls. U/L approved 5:BC dry chemical fire extinguisher installed in truck cab.

**Operators Manual & Video:** Two CDs and one printed copy of operation, maintenance, safety and parts manual provided with each unit. Operational and safety video provided at delivery.

**Installation:** Unit installed on truck, painted, system and tank filled with oil, tested, inspected, and ready to operate.

**Standard Paint:** Paint boom and turret red, outriggers red, and bed and boxes black. Top of bed painted with black nonskid surface.

**Bumper:** Bureau of Motor Carrier Safety rear bumper.

**Weight:** Approximately 11,000 lbs. with 18' steel-floor bed less truck.

**Truck Chassis Required:** Approx. 120" C.A. RBM 900,000 in.-lb. per rail, 10,000 lb. front axle and 25,999 lb. GVWR required. Trucks must have increased cooling, heavy-duty front and rear springs, 12V electrical system with high capacity alternator, cab clearance stop/tail/backup lights, and I.D. lamps. Recommended GVWR is minimum for HiReach with flatbed only. Contact factory when additional equipment is to be added.

**Options:**

2,000 lb or 5,900 lb Capacity Boom Winch.

1,000 lb Capacity Platform Jib Winch.

Welder, Air, 110V Lines and More to Platform.

Custom Toolboxes.

Much More....

Elliott Equipment Company reserves the right to change the specification of any unit at any time without prior notice. This brochure is only a statement of general specifications on the date of this publication. For more detailed info on specific Elliott trucks go to [www.elliottequip.com](http://www.elliottequip.com)

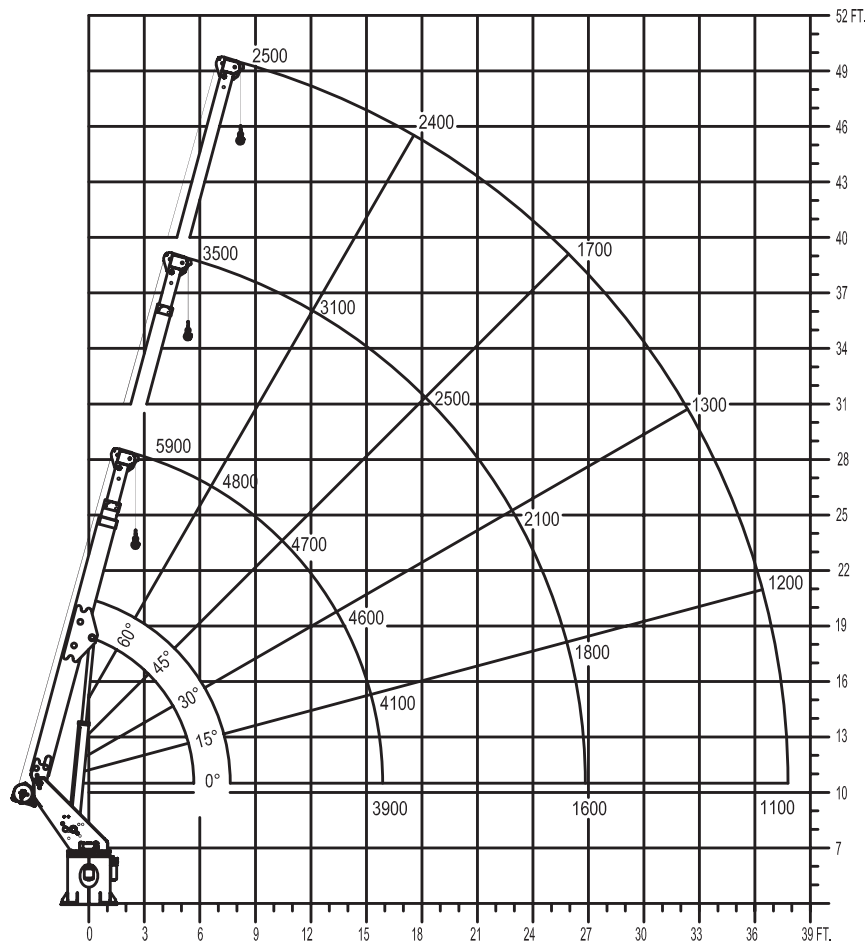
**MAXIMUM LIFTING CAPABILITIES**

**MAXIMUM WORKING LOADS  
CRANE OPERATION  
MODEL G50**

WINCH LINE LOAD (POUNDS) WITH BUCKETS OR PLATFORM REMOVED

USE OUTRIGGERS AT ALL TIMES • AVOID JERKING LOAD

360° RADIUS • DEDUCT FOR DOWNHAUL WEIGHT • USE 2 PART LINE FOR LOADS OVER 2700 LBS



DEDUCT 400 LBS. WITH BUCKETS OR PLATFORM ATTACHED

**ELLIOTT**

EQUIPMENT COMPANY

DO NOT PAINT OVER ANY LABELS

1068140 040203

**MAXIMUM JIB LIFTING CAPABILITIES**

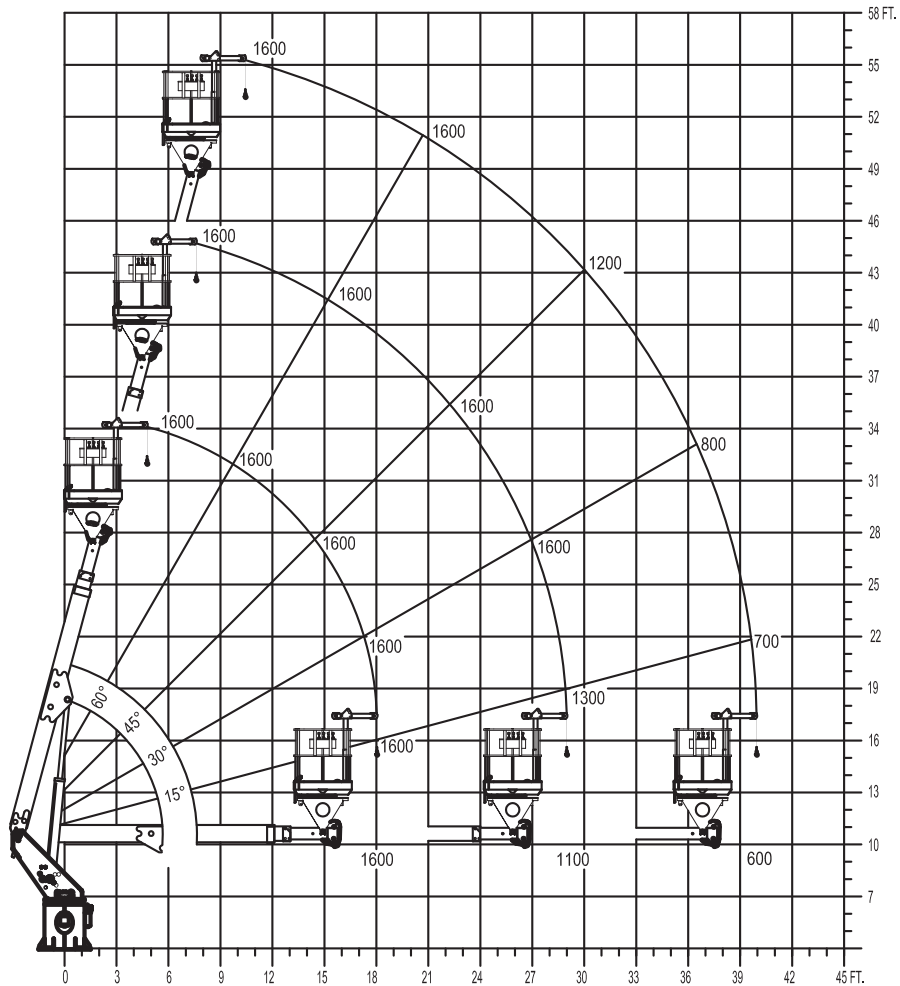
**MAXIMUM WORKING LOADS  
PLATFORM JIB OPERATION**

**MODEL G50**

TOTAL PLATFORM CAPACITY (JIB LOAD PLUS PERSONNEL)

USE OUTRIGGERS AT ALL TIMES • AVOID JERKING LOAD

360° RADIUS



**JIB 1,000 LBS. MAX PERSONNEL 600 LBS. MAX**

**ELLIOTT**  
EQUIPMENT COMPANY

## CHASSIS DATA

	G50F
Wheelbase (WB)	187" / 475 cm
Cab to Axle (CA)	120" / 305 cm
Cab to End of Frame (EOF)	220" / 559 cm
Frame Section Modulus	7.5 in3 / 120,000 psi / 827,371 kPa
Front Axle Gross Weight Rating	10,000 lb / 4536 kg
Rear Axle Gross Weight Rating	19,000 lb / 8618 kg
Extended Front Frame	N/A

Chassis data is minimum general requirements-not for engineering.  
Actual dimensions and truck data will depend on truck selection and axle configuration.

## OPTIONS



### Radio Remote Control

Interference protected radio remotes let you get closer to your work and have full control over your machine.



### Material Handling Jib

Equip your HiReach platform with a material handling jib crane to handle up to 1,000 lbs from within arm's reach.



### Boom-Mounted Winch

Take advantage of the 5,900 lb capacity 2 speed hydraulic winch with 1/2" cable and optional load indication system.



### Outrigger Pad Holders

Outrigger pad holders safely store your pads for travel and leave plenty of room for tool boxes.



### Bed Accessories

Mount a wide variety of tool accessories including welders, power washers, and generators on the bed with lines to the platform.



### Platform Accessories

Choose from a list of platform accessories including 110V outlets, welding leads, hydraulic tools, and much more.



### Custom Design Engineering

Customize your HiReach by adding lights, tools, special paint, and much more. Let Elliott's engineering team design the right configuration for your business.

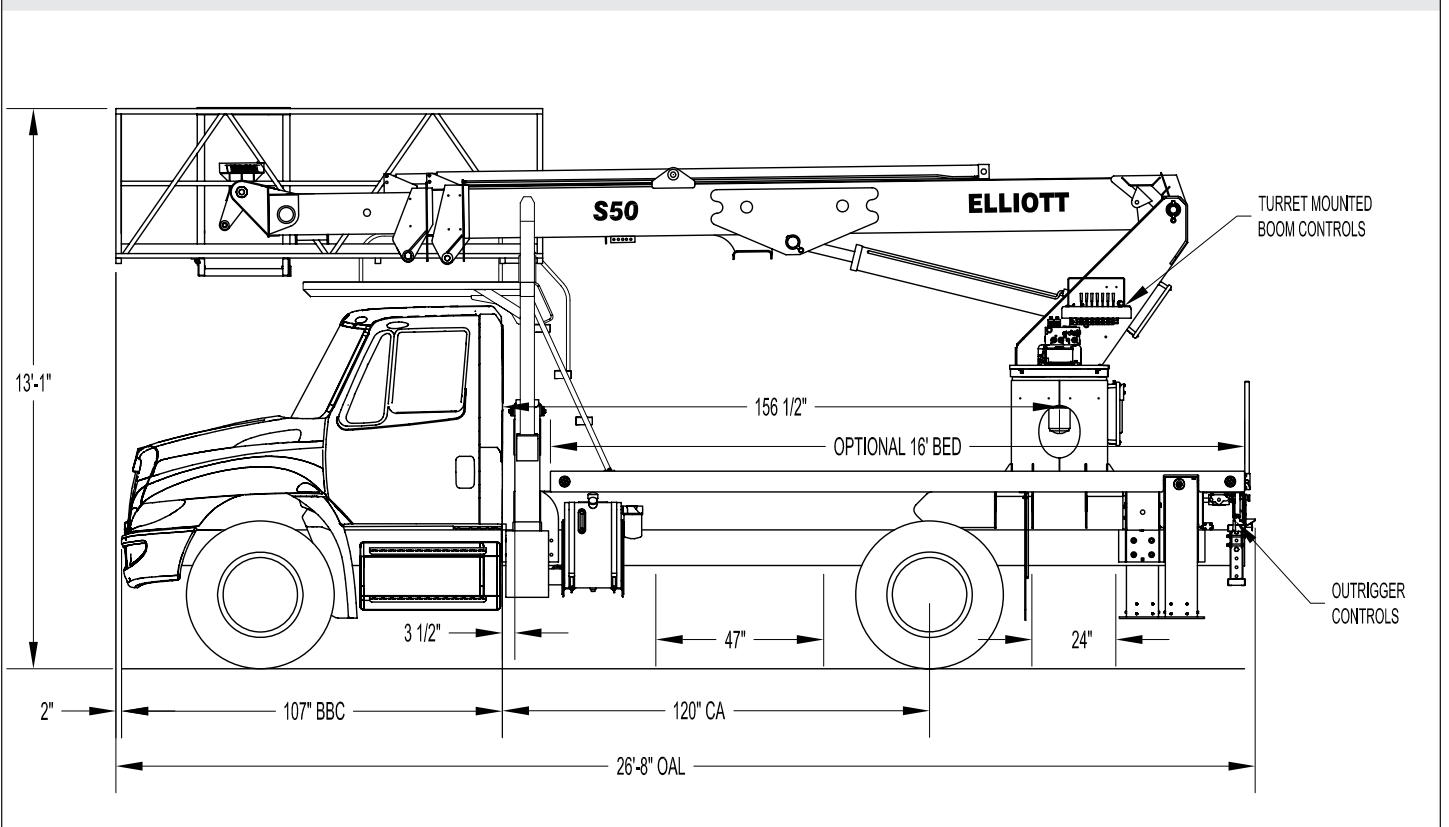


### Line Body

Let us work with you to customize a line body to secure your tools and supplies the the best way for your application.



### S50R SIDE VIEW DIAGRAM



- **Working Height** 56' / 17,1 m
- **Working Side Reach** 48' / 14,6 m
- **Platform Capacity** 900 lbs / 408 kg
- **Platform Size** 28" x 120" / 71 x 305 cm
- **Platform Type** SkyWalk™
- **Lifting Capacity (Main Winch)** 5,900 lbs / 2676 kg
- **Lifting Capacity (Jib Winch)** 500 lbs / 227 kg

- **Powered Boom Sections** 3
- **Overall Height** 13'1" / 4 m
- **Unit Weight (Bare)** 13,500 lbs / 6123 kg
- **Outrigger Spread Main** 18' / 5,5 m
- **Outrigger Spread Auxiliary** 12'6" / 3,8 m
- **Front Axle Gross Weight Rating** 10,000 lbs / 4536 kg
- **Minimum Vehicle GVWR** 25,999 lbs / 11 793 kg

## TECHNICAL SPECIFICATIONS

**Maximum Platform Height:** 50' ground to platform floor.

**Working Range:** 56' max. height and 48' max. side reach.

**Work Platform:** 28"x120" SkyWalk™ oversized work platform with 40" high rails. Equipped with two safety lanyard attachment loops and two safety harnesses and 72" lanyards. Platform capacity 900 lbs.

**Platform Leveling System:** Hydraulic "closed" system consisting of twin platform cylinders interacting with a boom-actuated master cylinder mounted in boom support turret. System provided with factory-set relief valves to compensate for oil expansion or overload during platform leveling operation. Remote releveling controls provided in platform and at ground controls to give precise releveling capability.

**Platform Controls:** Four individual proportional electronic controllers meter pilot-operated, pressure-compensated modulating valves. Boom ground controls are mounted on curbside of turret. Remote controls for boom operations from platform operate from a removable remote control box. Hi/Lo range, start/stop and engine speed toggle controls are also located at platform. Electric remote control cable extends through the electrical slip ring to cable carrier on side of boom to extending boom sections.

**Lower Controls:** Mounted on roadside of turret.

**Outrigger Controls:** Parallel open-center stack valve for lever-operated control of right and left outriggers. The outrigger valves are mounted at the rear, under each corner of the bed with roadside valve controlling roadside outriggers and curbside valve controlling curbside outriggers.

**Outriggers:** Base mounted "MH"

type main outriggers with 18' spread. "A" type secondary outriggers with 12' spread.

**Frame:** One piece, all welded, box-type fabrication with integral outrigger mounts.

**Turret:** Reverse offset turret is one-piece weldment mounted on turret box. Turret rotates on large diameter ball bearing.

**Rotation:** Continuous turret rotation with no stops. Hydraulic motor drives turret through self-locking gear box.

**Boom:** Steel rectangular tube sections. Assembly includes heavy-duty cylinder fittings, pivot pins, and replaceable wear pads.

**Boom Extension:** One 'overslung' extension cylinder.

**Lift:** One single-acting full displacement, long stroke cylinder, provides smooth and stable boom elevation. Holding valve prevent boom from falling in event of hose failure.

**Cylinders:** All cylinders use microhoned cylinder tubing, chrome shafts, top grade packing and protective rod wipers. Cylinder-mounted holding valves provided on all load-holding cylinders.

**Hoses:** All high pressure hoses are wire braid reinforced with a minimum safety factor of 4 to 1.

**Oil Tank Capacity:** 35 gallon mounted to truck frame on roadside.

**Hydraulic System:** Operating pressure approximately 2,500 PSI. System is parallel open center type and is equipped with liquid-filled pressure gauge. Oil is supplied to upper cylinders through hydraulic union in center of turret to cable carrier along side of the boom.

**Pump:** Gear type, direct mount to truck PTO.

**PTO:** Heavy-duty, high-speed. Cable engaged from cab.

**Cab Equipment:** PTO cable with indicator lights installed in truck cab. Engine speed control and start/stop installed with control switches in platform remote control box and also located at lower controls. U/L approved 5:BC dry chemical fire extinguisher installed in truck cab.

**Operators Manual & Video:** Two CDs and one printed copy of operation, maintenance, safety and parts manual provided with each unit. Operational and safety video provided at delivery.

**Installation:** Unit installed on truck, painted, system and tank filled with oil, tested, inspected, and ready to operate.

**Standard Paint:** Paint boom and turret red, outriggers red, and bed and boxes black. Top of bed painted with black nonskid surface.

**Bumper:** Bureau of Motor Carrier Safety rear bumper.

**Weight:** Approximately 13,500 lbs. with 16' steel-floor bed less truck.

**Truck Chassis Required:** Approx. 120" C.A. RBM 900,000 in.-lb. per rail, 10,000 lb. front axle and 25,999 lb. GVWR required. Trucks must have increased cooling, heavy-duty front and rear springs, 12V electrical system with high capacity alternator, cab clearance stop/tail/backup lights, and I.D. lamps. Recommended GVWR is minimum for Skywalk with flatbed only. Contact factory when additional equipment is to be added.

**Options:**

5,900 lb or 9,000 lb Capacity Main Boom Winch.

500 lb Capacity Platform Jib.

Welder, Air, 110V Lines to Platform.

Custom Toolbox Configurations.

Much More...

Much more....

Elliott Equipment Company reserves the right to change the specification of any unit at any time without prior notice. This brochure is only a statement of general specifications on the date of this publication. For more detailed info on specific Elliott trucks go to [www.elliottequip.com](http://www.elliottequip.com)

**MAXIMUM WORKING LOADS**

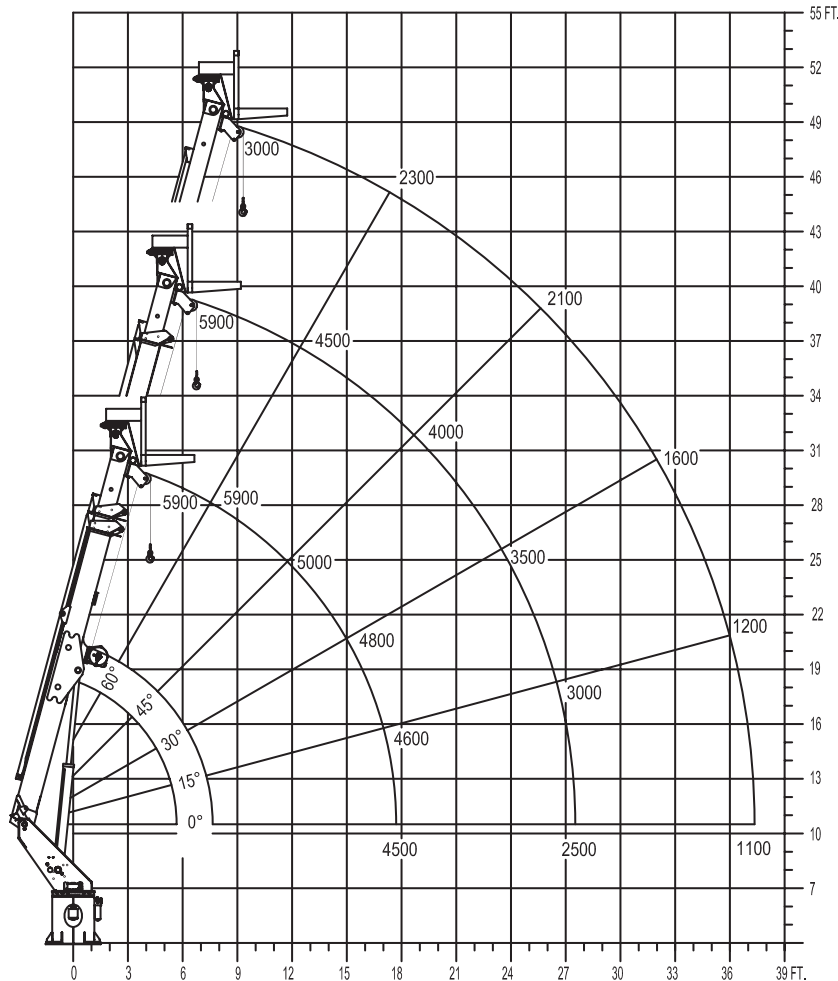
**MAXIMUM WORKING LOADS  
CRANE OPERATION**

**MODEL S50**

WINCH LINE LOAD (POUNDS) WITH PLATFORM REMOVED

USE OUTRIGGERS AT ALL TIMES • AVOID JERKING LOAD

360° RADIUS • DEDUCT FOR DOWNHAUL WEIGHT • USE 2 PART LINE FOR LOADS OVER 2500 LBS



DEDUCT 600 LBS. WITH BUCKETS OR PLATFORM ATTACHED

**ELLIOTT**

EQUIPMENT COMPANY

DO NOT PAINT OVER ANY LABELS

1068120 040203

**MAXIMUM WORKING LOADS - JIB WINCH**

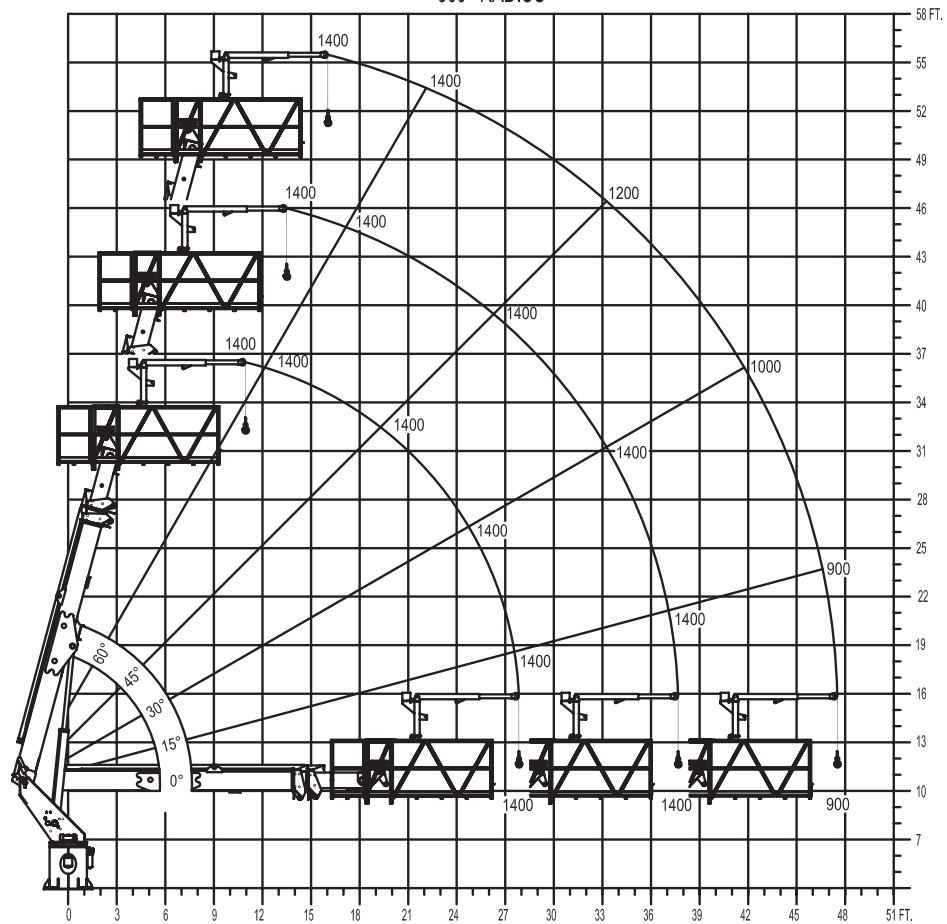
**MAXIMUM WORKING LOADS  
PLATFORM JIB OPERATION**

**MODEL S50**

TOTAL PLATFORM CAPACITY (JIB LOAD PLUS PERSONNEL)

USE OUTRIGGERS AT ALL TIMES • AVOID JERKING LOAD

360° RADIUS



EXTENDED JIB 300 LBS. AT 45° AND BELOW AND EXTENDED JIB 500LBS. ABOVE 45°  
RETRACTED JIB 500 LBS. MAX. PERSONNEL 900 LBS. MAX.

**ELLIOTT**

DO NOT PAINT OVER ANY LABELS

EQUIPMENT COMPANY

1075670 011904

## CHASSIS DATA

	S50R
Wheelbase (WB)	187" / 475 cm
Cab to Axle (CA)	120" / 305 cm
Cab to End of Frame (EOF)	210" / 533 cm
Frame Section Modulus	7.5 in3 / 120,000 psi / 827,371 kPa
Front Axle Gross Weight Rating	10,000 lb / 7257 kg
Rear Axle Gross Weight Rating	19,000 lb / 18 144 kg
Extended Front Frame	N/A

Chassis data is minimum general requirements-not for engineering.  
Actual dimensions and truck data will depend on truck selection and axle configuration.

## OPTIONS



### Radio Remote Control

Interference protected radio remotes let you get closer to your work and have full control over your machine.



### Material Handling Jib

Equip your HiReach platform with a material handling jib crane to lift up to 500 lbs. of tools or supplies into the platform.



### High Capacity Boom Winch

Take advantage of the SkyWalk's boom strength by adding a 5,900 lb or 9,000 lb capacity boom winch.



### Outrigger Pad Holders

Outrigger pad holders safely store your pads for travel and leave plenty of room for tool boxes.



### Bed Accessories

Mount a wide variety of tool accessories including welders, power washers, and generators on the bed with lines to the platform.



### Platform Accessories

Choose from a list of platform accessories including 110V outlets, welding leads, hydraulic tools, and much more.



### Automatic Safety Rotation Lockout

Choose two sets of MH outriggers and the rotation lockout option to short-jack your HiReach for a reduced outrigger spread on the job site.

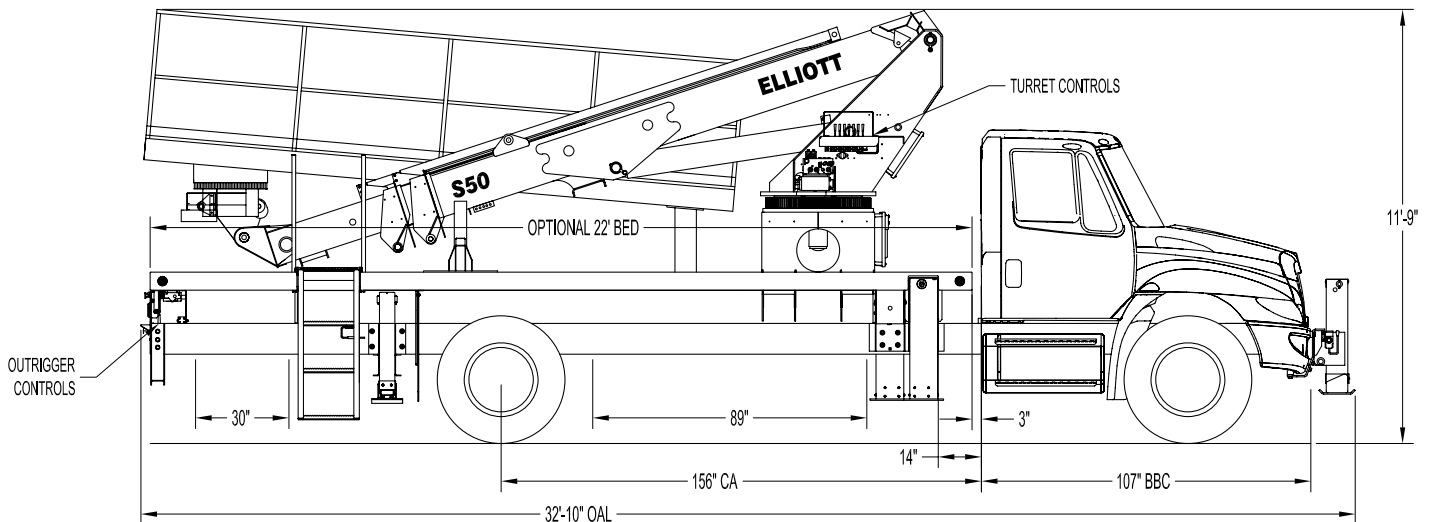


### Line Body

Let us work with you to customize a line body to secure your tools and supplies the best way for your application.



### S50F SIDE VIEW DIAGRAM



- |  |                           |   |                      |
|--|---------------------------|---|----------------------|
| • <b>Working Height</b>                | 55' / 16,8 m              | • <b>Powered Boom Sections</b>          | 3                    |
| • <b>Working Side Reach</b>            | 54' / 16,5 m              | • <b>Overall Height</b>                 | 11'9" / 3,6 m        |
| • <b>Platform Capacity</b>             | 900 lbs / 408 kg          | • <b>Unit Weight (Bare)</b>             | 15,500 lbs / 7031 kg |
| • <b>Platform Size</b>                 | 28 x 192 in / 71 x 487 cm | • <b>Outrigger Spread Main</b>          | 18' / 5,5 m          |
| • <b>Platform Type</b>                 | SkyWalk™                  | • <b>Outrigger Spread Auxiliary</b>     | 8' / 2,4 m           |
| • <b>Lifting Capacity (Main Winch)</b> | 5,900 lbs / 2676 kg       | • <b>Front Gross Axle Weight Rating</b> | 13,000 lbs / 5897 kg |
| • <b>Lifting Capacity (Jib Winch)</b>  | 500 lbs / 227 kg          | • <b>Rear Gross Axle Weight Rating</b>  | 20,000 lbs / 9072 kg |

## TECHNICAL SPECIFICATIONS

**Maximum Platform Height:** 50' ground to platform floor.

**Working Range:** 55' max. working height and 54' max. side reach.

**Work Platform:** 28"x192" SkyWalk™ oversized work platform with 40" high rails. Equipped with two safety lanyard attachment loops, two safety harnesses, and two lanyards. Platform capacity 900 lbs.

**Platform Leveling System:** Hydraulic "closed" system consisting of twin platform cylinders interacting with a boom-actuated master cylinder mounted in boom support turret. System provided with factory-set relief valves to compensate for oil expansion or overload during platform leveling operation. Remote releveling controls provided in platform and at ground controls to give precise releveling capability.

**Platform Controls:** Three individual proportional electronic controllers meter pilot-operated, pressure-compensated modulating valves. Boom ground controls are mounted on curbside of turret. Remote controls for boom operations from platform operate from a removable remote control box. Hi/Lo range, start/stop and engine speed toggle controls are also located at platform. Electric remote control cable extends through the electrical slip ring to cable carrier on side of boom to extending boom sections.

**Lower Controls:** Mounted on curbside of turret.

**Outrigger Controls:** Parallel open-center stack valve for lever-operated control of right and left outriggers. The outrigger valves are mounted at the rear, under each corner of the bed with roadside valve controlling roadside outriggers and curbside valve controlling curbside outriggers.

**Outriggers:** Base mounted "MH" type

hydraulically powered main outriggers with 18' spread. "A" type underslung secondary outriggers with 8' spread.

**Frame:** One piece, all welded, box-type fabrication with integral outrigger mounts.

**Turret:** Reverse offset turret is one-piece weldment mounted on turret box. Turret rotates on large diameter ball bearing.

**Rotation:** Continuous turret rotation with no stops. Hydraulic motor drives turret through self-locking gear box.

**Boom:** Steel rectangular tube sections. Assembly includes heavy-duty cylinder fittings, pivot pins, and replaceable wear pads.

**Boom Extension:** One "overslung" extension cylinder.

**Lift:** One single-acting full displacement, long stroke cylinder, provides smooth and stable boom elevation. Holding valve prevent boom from falling in event of hose failure.

**Cylinders:** All cylinders use microhoned cylinder tubing, chrome shafts, top grade packing and protective rod wipers. Cylinder-mounted holding valves provided on all load-holding cylinders.

**Hoses:** All high pressure hoses are wire braid reinforced with a minimum safety factor of 4 to 1.

**Oil Tank Capacity:** 35 gallon mounted to truck frame on roadside.

**Hydraulic System:** Operating pressure approximately 2,500 PSI. System is parallel open center type and is equipped with liquid-filled pressure gauge. Oil is supplied to upper cylinders through hydraulic union in center of turret to cable carrier along side of the boom.

**Pump:** Gear type, direct mount to truck PTO.

**PTO:** Heavy-duty, high-speed. Cable engaged from cab.

**Cab Equipment:** PTO cable with indicator lights installed in truck cab. Engine speed control and start/stop installed with control switches in platform remote control box and also located at lower controls. U/L approved 5:BC dry chemical fire extinguisher installed in truck cab.

**Operators Manual & Video:** Two CDs and one printed copy of operation, maintenance, safety and parts manual provided with each unit. Operational and safety video provided at delivery.

**Installation:** Unit installed on truck, painted, system and tank filled with oil, tested, inspected, and ready to operate.

**Standard Paint:** Paint boom and turret red, outriggers red, and bed and boxes black. Top of bed painted with black nonskid surface.

**Bumper:** Bureau of Motor Carrier Safety rear bumper.

**Weight:** Approximately 15,500 lbs. with 22' steel-floor bed less truck.

**Truck Chassis Required:** Approx. 156" C.A. RBM 1,600,000 in-lb. per rail, 13,000 lb. front axle and 33,000 lb. GVWR required. Trucks must have increased cooling, heavy-duty front and rear springs, 12V electrical system with high capacity alternator, cab clearance stop/tail/backup lights, and I.D. lamps. Extended front frame rails. Recommended GVWR is minimum with flatbed only. Contact factory when additional equipment is to be added.

**Options:**

5,900 lb or 9,000 lb Capacity Main Boom Winch.

500 lb Capacity Platform Jib.

Welder, Air, 110V Lines to Platform.

Custom Toolbox Configurations.

Much More...

Elliott Equipment Company reserves the right to change the specification of any unit at any time without prior notice. This brochure is only a statement of general specifications on the date of this publication. For more detailed info on specific Elliott trucks go to [www.elliottequip.com](http://www.elliottequip.com)

**MAXIMUM WORKING LOADS**

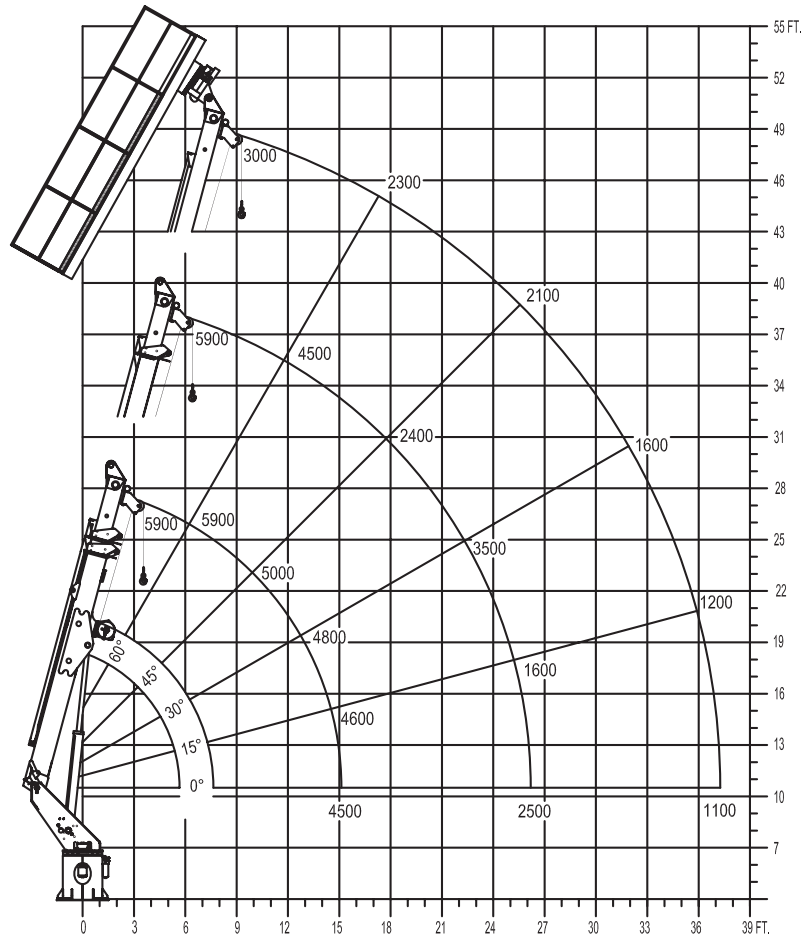
**MAXIMUM WORKING LOADS  
CRANE OPERATION**

**MODEL S50**

WINCH LINE LOAD (POUNDS) WITH PLATFORM REMOVED

USE OUTRIGGERS AT ALL TIMES • AVOID JERKING LOAD

360° RADIUS • DEDUCT FOR DOWNHAUL WEIGHT • USE 2 PART LINE FOR LOADS OVER 4500 LBS



**ELLIOTT**  
EQUIPMENT COMPANY

DO NOT PAINT OVER ANY LABELS

1121120 072506

## CHASSIS DATA

	S50F
Wheelbase (WB)	223" / 566 cm
Cab to Axle (CA)	156" / 396 cm
Cab to End of Frame (EOF)	266" / 676 cm
Frame Section Modulus	13.3 in3 / 120,000 psi / 827,371 kPa
Front Axle Gross Weight Rating	13,000 lb / 5897 kg
Rear Axle Gross Weight Rating	20,000 lb / 9072 kg
Extended Front Frame	Required

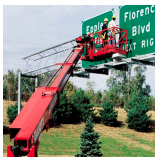
Chassis data is minimum general requirements-not for engineering.  
Actual dimensions and truck data will depend on truck selection and axle configuration.

## OPTIONS



### Radio Remote Control

Interference protected radio remotes let you get closer to your work and have full control over your machine.



### Material Handling Jib

Equip your HiReach platform with a material handling jib crane to lift up to 500 lbs. of tools or supplies into the platform.



### High Capacity Boom Winch

Take advantage of the SkyWalk's boom strength by adding a 5,900 lb or 9,000 lb capacity boom winch.



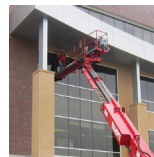
### Outrigger Pad Holders

Outrigger pad holders safely store your pads for travel and leave plenty of room for tool boxes.



### Bed Accessories

Mount a wide variety of tool accessories including welders, power washers, and generators on the bed with lines to the platform.



### Platform Accessories

Choose from a list of platform accessories including 110V outlets, welding leads, hydraulic tools, and much more.



### Automatic Safety Rotation Lockout

Choose two sets of MH outriggers and the rotation lockout option to short-jack your HiReach for a reduced outrigger spread on the job site.

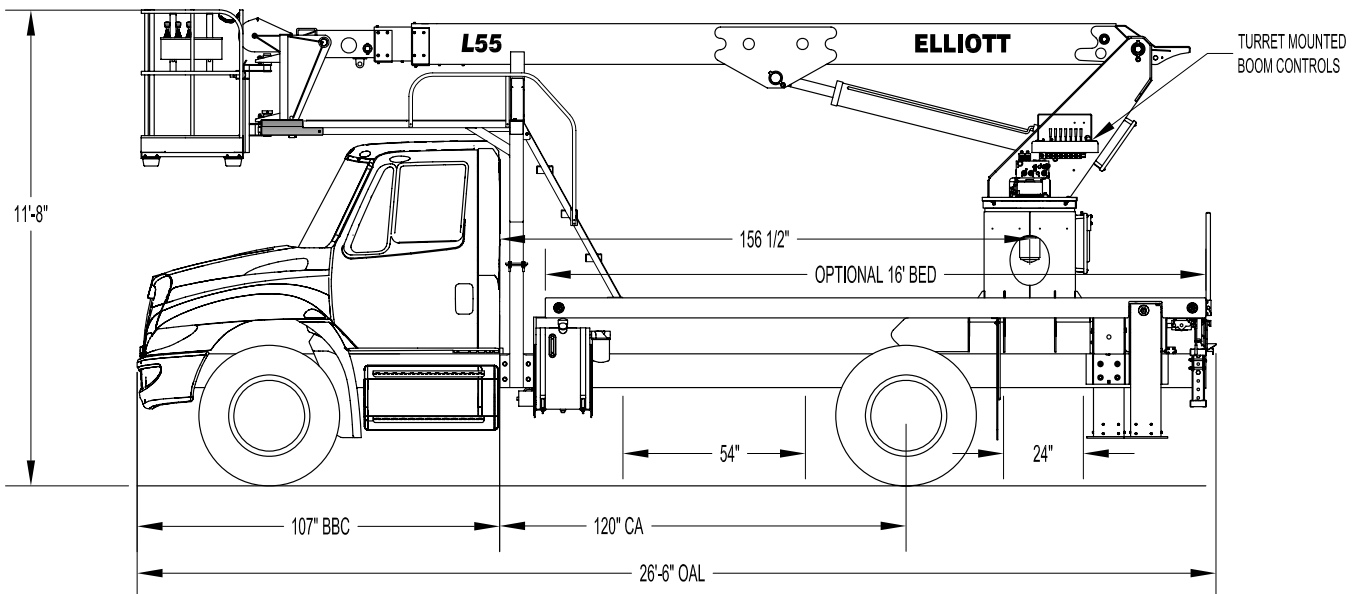


### Line Body

Let us work with you to customize a line body to secure your tools and supplies the best way for your application.



### L55R SIDE VIEW DIAGRAM



- **Working Height** 58' / 17,7 m
- **Working Side Reach** 51' / 15,5 m
- **Platform Capacity** 500 lbs / 227 kg
- **Platform Size** 30 x 54 in / 76 x 137 cm
- **Platform Type** EZR
- **Lifting Capacity (Main Winch)** 5,900 lbs / 2676 kg
- **Jib Winch** N/A

- **Powered Boom Sections** 3
- **Overall Height** 11'8" / 3,5m
- **Unit Weight (Bare)** 12,000 lbs / 5443 kg
- **Outrigger Spread Main** 18' / 5,5m
- **Outrigger Spread Auxiliary** N/A
- **Front Axle Gross Weight Rating** 10,000 lbs / 4536 kg
- **Minimum Vehicle GVWR** 25,999 lbs / 11 793 kg

## TECHNICAL SPECIFICATIONS

**Maximum Platform Height:** 52' ground to platform floor.

**Working Range:** 58' max. working height and 51' max. working side reach.

**Work Platform:** 30"x54" EZR end-hung work platform with 40" high rails. Equipped with two safety lanyard attachment loops and two safety harnesses and 72" lanyards. Platform capacity 500 lbs.

**Platform Leveling System:** Hydraulic "closed" system consisting of twin platform cylinders interacting with a boom-actuated master cylinder mounted in boom support turret. System provided with factory-set relief valves to compensate for oil expansion or overload during platform leveling operation. Remote releveling controls provided in platform and at ground controls to give precise releveling capability.

**Platform Controls:** Three individual proportional electronic controllers meter pilot-operated, pressure-compensated modulating valves. Remote controls for boom operations from platform operate from a removable remote control box. Hi/Lo range, start/stop and engine speed toggle controls are also located at platform. Electric remote control cable extends through the electrical slip ring to cable carrier on side of boom to extending boom sections.

**Lower Controls:** Mounted on roadside of turret.

**Outrigger Controls:** Parallel open-center stack valve for lever-operated control of right and left outriggers. The outrigger valves are mounted at the rear, under each corner of the bed with roadside valve controlling roadside outriggers and curbside valve controlling curbside outriggers.

**Outriggers:** One set of "MH" type main outriggers at rear of bed.

**Frame:** One piece, all welded, box-type fabrication with integral outrigger mounts.

**Turret:** Reverse offset turret is one-piece weldment mounted on turret box. Turret rotates on large diameter ball bearing.

**Rotation:** Continuous turret rotation with no stops. Hydraulic motor drives turret through self-locking gear box.

**Boom:** Steel rectangular tube sections. Assembly includes heavy-duty cylinder fittings, pivot pins, and replaceable wear pads.

**Boom Extension:** Two opposing "piggyback" cylinders extend the boom sections.

**Lift:** One single-acting full displacement, long stroke cylinder, provides smooth and stable boom elevation. Holding valve prevents boom from falling in event of hose failure.

**Cylinders:** All cylinders use microhoned cylinder tubing, chrome shafts, top grade packing and protective rod wipers. Cylinder-mounted holding valves provided on all load-holding cylinders.

**Hoses:** All high pressure hoses are wire braid reinforced with a minimum safety factor of 4 to 1.

**Oil Tank Capacity:** 35 gallon mounted to truck frame on roadside.

**Hydraulic System:** Operating pressure is 2,500 PSI. System is parallel open center type and is equipped with liquid-filled pressure gauge. Oil is supplied to upper cylinders through hydraulic union in center of turret to cable carrier along side of the boom.

**Pump:** Gear type, direct mount to truck PTO.

**PTO:** Heavy-duty, high-speed. Cable engaged from cab.

**Cab Equipment:** PTO cable or switch with indicator lights installed in truck

cab. Engine speed control and start/stop installed with control switches in platform remote control box and also located at lower controls. U/L approved 5:BC dry chemical fire extinguisher installed in truck cab.

**Operators Manual & Video:** Two CDs and one printed copy of operation, maintenance, safety and parts manual provided with each unit. Operational and safety video provided at delivery.

**Installation:** Unit installed on truck, painted, system and tank filled with oil, tested, inspected, and ready to operate.

**Standard Paint:** Paint boom and turret red, outriggers red, and bed and boxes black. Top of steel bed painted with black nonskid surface.

**Bumper:** Bureau of Motor Carrier Safety rear bumper.

**Weight:** Approximately 12,000 lbs. with 16' steel-floor bed less truck.

**Truck Chassis Required:** Approx. 120" C.A. RBM 900,000 in-lb. per rail, 10,000 lb. front axle and 25,999 lb. GVWR required. Trucks must have increased cooling, heavy-duty front and rear springs, 12V electrical system with high capacity alternator, cab clearance stop/tail/backup lights, and I.D. lamps. Recommended GVWR is minimum for HiReach with flatbed only. Contact factory when additional equipment is to be added.

**Options:**

5,900 lb or 2,000 lb Capacity Boom Winch.

Welder, Air, and 110V Lines to Platform.

Cab Guard With Platform Access.

Much more....

Elliott Equipment Company reserves the right to change the specification of any unit at any time without prior notice. This brochure is only a statement of general specifications on the date of this publication. For more detailed info on specific Elliott trucks go to [www.elliottequip.com](http://www.elliottequip.com)

**MAXIMUM WORKING LOADS**

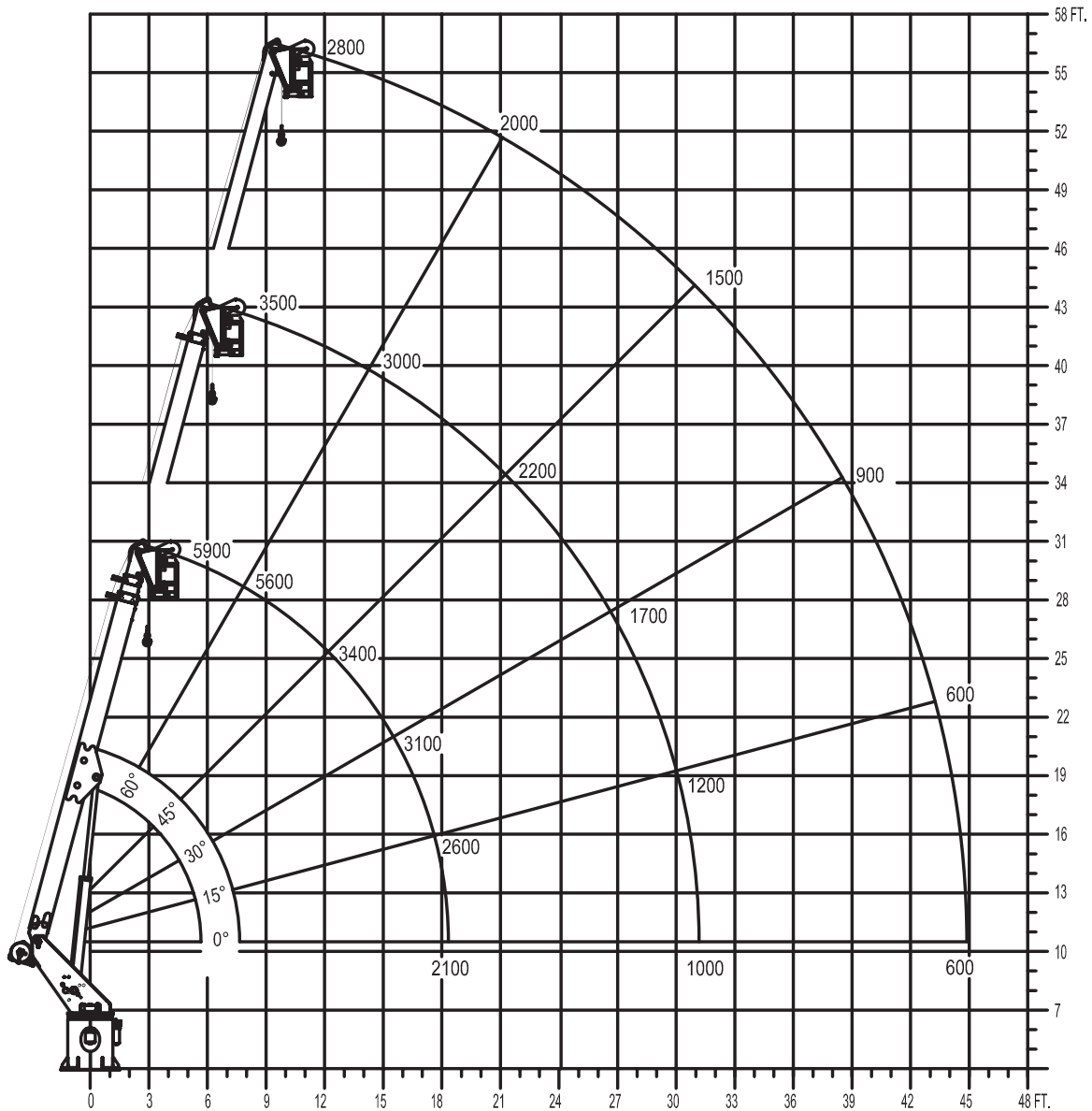
**MAXIMUM WORKING LOADS  
CRANE OPERATION**

**MODEL L55**

WINCH LINE LOAD (POUNDS) WITH BUCKETS OR PLATFORM REMOVED

USE OUTRIGGERS AT ALL TIMES • AVOID JERKING LOAD

360° RADIUS • DEDUCT FOR DOWNHAUL WEIGHT • USE 2 PART LINE FOR LOADS OVER 2500 LBS



## CHASSIS DATA

	L55R
Wheelbase (WB)	187" / 475 cm
Cab to Axle (CA)	120" / 305 cm
Cab to End of Frame (EOF)	211" / 536 cm
Frame Section Modulus	8.2 in3 / 110,000 psi / 758,450 kPa
Front Axle Gross Weight Rating	10,000 lb / 4536 kg
Rear Axle Gross Weight Rating	19,000 lb / 8618 kg
Extended Front Frame	N/A

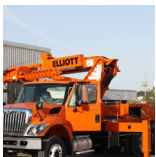
Chassis data is minimum general requirements-not for engineering.  
Actual dimensions and truck data will depend on truck selection and axle configuration.

## OPTIONS



### Automatic Safety Rotation Lockout

Reduce outrigger spread with Elliott's automatic safety rotation lockout option allowing you to safely shortjack MH outriggers for work in confined spaces.



### Custom Paint

Elliott offers a variety of custom paint applications including standard white or red paint, metallic paints or multiple colors to fit your branding.



### High Capacity Boom Winch

Offering 5,900 lb or 2,000 lb capacity boom winch options that convert your HiReach into a material handling aerial device.



### Outrigger Pad Holders

Outrigger pad holders safely store your pads for travel and leave plenty of room for tool boxes.



### Bed Accessories

Mount a wide variety of tool accessories including welders, power washers, and generators on the bed with lines to the platform.



### Platform Accessories

Choose from a list of platform accessories including 110V outlets, welding leads, hydraulic tools, and much more.



### Cab Windshield Guard

Choose a steel cab windshield guard for added cab protection and walking access from the bed to the platform while in the stowed position.

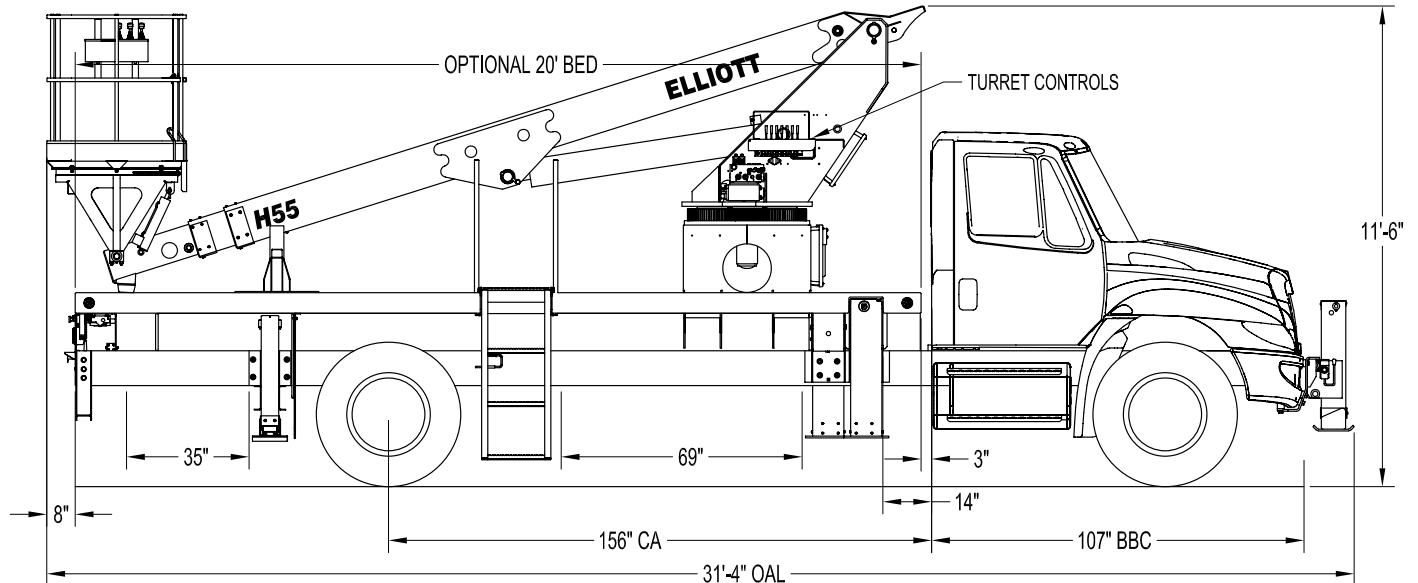


### Custom Toolbox Packages

Let us work with you to customize your storage options by choosing from a array of steel or aluminum underbody or abovebody boxes.



### H55F SIDE VIEW DIAGRAM



- |  |                           |   |                      |
|--|---------------------------|---|----------------------|
| • <b>Working Height</b>                | 60' / 18,3 m              | • <b>Powered Boom Sections</b>          | 3                    |
| • <b>Working Side Reach</b>            | 43' / 13,1 m              | • <b>Overall Height</b>                 | 11'6" / 3,5 m        |
| • <b>Platform Capacity</b>             | 600 lbs / 272 kg          | • <b>Unit Weight (Bare)</b>             | 15,500 lbs / 7031 kg |
| • <b>Platform Size</b>                 | 40 x 60 in / 102 x 152 cm | • <b>Outrigger Spread Main</b>          | 18' / 5,5 m          |
| • <b>Platform Type</b>                 | Top-Mount                 | • <b>Outrigger Spread Auxiliary</b>     | 8' / 2,4 m           |
| • <b>Lifting Capacity (Main Winch)</b> | 5,900 lbs / 2676 kg       | • <b>Front Gross Axle Weight Rating</b> | 13,000 lbs / 5897 kg |
| • <b>Jib Winch</b>                     | 1,000 lbs / 454 kg        | • <b>Rear Gross Axle Weight Rating</b>  | 20,000 lbs / 9072 kg |

## TECHNICAL SPECIFICATIONS

**Maximum Platform Height:** 55' ground to platform floor.

**Working Range:** 60' max. height and 43' max. side reach.

**Work Platform:** 40x60" Top-Mount work platform with 40" high rails. Equipped with two safety lanyard attachment loops and two safety harnesses and 72" lanyards. Platform capacity 600 lbs.

**Platform Leveling System:** Hydraulic "closed" system consisting of twin platform cylinders interacting with a boom-actuated master cylinder mounted in boom support turret. System provided with factory-set relief valves to compensate for oil expansion or overload during platform leveling operation. Remote releveling controls provided in platform and at ground controls to give precise releveling capability.

**Platform Controls:** Three individual proportional electronic controllers meter pilot-operated, pressure-compensated modulating valves. Boom ground controls are mounted on curbside of turret. Remote controls for boom operations from platform operate from a removable remote control box. Hi/Lo range, start/stop and engine speed toggle controls are also located at platform. Electric remote control cable extends through the electrical slip ring to cable carrier on side of boom to extending boom sections.

**Lower Controls:** Mounted on curbside of turret.

**Outrigger Controls:** Parallel open-center stack valve for lever-operated control of right and left outriggers. The outrigger valves are mounted at the rear, under each corner of the bed with roadside valve controlling roadside outriggers and curbside valve controlling curbside outriggers.

**Outriggers:** "MH" type out-and-down

main outriggers with 18' spread. "A" type underslung secondary outriggers with 8' spread.

**Frame:** One piece, all welded, box-type fabrication with integral outrigger mounts.

**Turret:** Reverse offset turret is one-piece weldment mounted on turret box. Turret rotates on large diameter ball bearing.

**Rotation:** Continuous turret rotation with no stops. Hydraulic motor drives turret through self-locking gear box.

**Boom:** Steel rectangular tube sections. Assembly includes heavy-duty cylinder fittings, pivot pins, and replaceable wear pads.

**Boom Extension:** Two opposing "piggyback" extension cylinders extend the boom sections.

**Lift:** One single-acting full displacement, long stroke cylinder, provides smooth and stable boom elevation. Holding valve prevent boom from falling in event of hose failure.

**Cylinders:** All cylinders use microhoned cylinder tubing, chrome shafts, top grade packing and protective rod wipers. Cylinder-mounted holding valves provided on all load-holding cylinders.

**Hoses:** All high pressure hoses are wire braid reinforced with a minimum safety factor of 4 to 1.

**Oil Tank Capacity:** 35 gallon mounted to truck frame on roadside.

**Hydraulic System:** Operating pressure approximately 2,500 PSI. System is parallel open center type and is equipped with liquid-filled pressure gauge. Oil is supplied to upper cylinders through hydraulic union in center of turret to cable carrier along side of the boom.

**Pump:** Gear type, direct mount to truck PTO.

**PTO:** Heavy-duty, high-speed. Cable

engaged from cab.

**Cab Equipment:** PTO cable with indicator lights installed in truck cab. Engine speed control and start/stop installed with control switches in platform remote control box and also located at lower controls. U/L approved 5:BC dry chemical fire extinguisher installed in truck cab.

**Operators Manual & Video:** Two CDs and one printed copy of operation, maintenance, safety and parts manual provided with each unit. Operational and safety video provided at delivery.

**Installation:** Unit installed on truck, painted, system and tank filled with oil, tested, inspected, and ready to operate.

**Standard Paint:** Paint boom and turret red, outriggers red, and bed and boxes black. Top of bed painted with black nonskid surface.

**Bumper:** Bureau of Motor Carrier Safety rear bumper.

**Weight:** Approximately 15,500 lbs. with 20' steel-floor bed less truck.

**Truck Chassis Required:** Approx. 156" C.A. RBM 1,600,000 in-lb. per rail, 10,000 lb. front axle and 25,999 lb. GVWR required. Trucks must have increased cooling, heavy-duty front and rear springs, 12V electrical system with high capacity alternator, cab clearance stop/tail/backup lights, and I.D. lamps. Extended front frame rails. Recommended GVWR is minimum for HI-REACH with flatbed only. Contact factory when additional equipment is to be added.

**Options:**

5,900 lb Capacity Boom Winch.

500 lb Capacity Platform Jib.

Welder, Air, 110V Lines and More to Platform.

Custom Toolboxes.

Much more....

Elliott Equipment Company reserves the right to change the specification of any unit at any time without prior notice. This brochure is only a statement of general specifications on the date of this publication. For more detailed info on specific Elliott trucks go to [www.elliottequip.com](http://www.elliottequip.com)

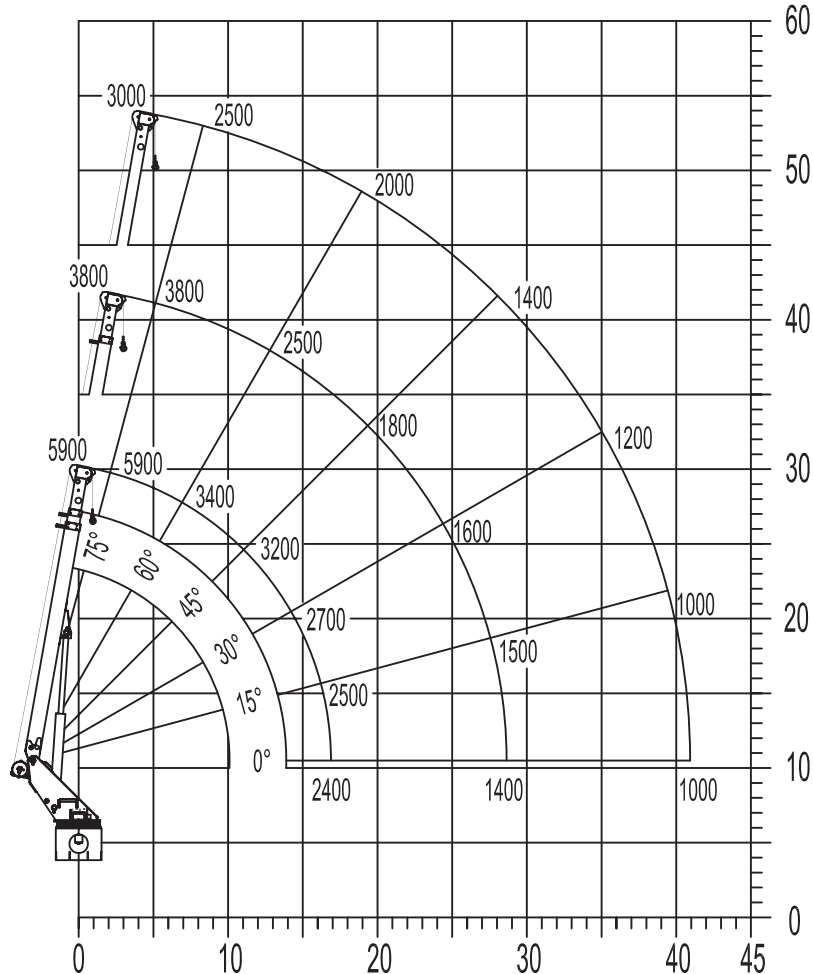
**MAXIMUM LIFTING CAPABILITIES**

**MAXIMUM WORKING LOADS  
CRANE OPERATION  
MODEL H55**

WINCH LINE LOAD (POUNDS) WITH BUCKETS OR PLATFORM REMOVED

USE OUTRIGGERS AT ALL TIMES • AVOID JERKING LOAD

360° RADIUS • DEDUCT FOR DOWNHAUL WEIGHT • USE 2 PART LINE FOR LOADS OVER 3000 LBS



DEDUCT 400 LBS. WITH BUCKETS OR PLATFORM ATTACHED

**ELLIOTT**

EQUIPMENT COMPANY

DO NOT PAINT OVER ANY LABELS

1077670 033004

**CHASSIS DATA**

	<b>H55F</b>
Wheelbase (WB)	224" / 569 cm
Cab to Axle (CA)	156" / 396 cm
Cab to End of Frame (EOF)	246" / 625 cm
Frame Section Modulus	13.3 in3 / 120,000 psi
Front Axle Gross Weight Rating	13,000 lb / 5897 kg
Rear Axle Gross Weight Rating	20,000 lb / 9072 kg
Extended Front Frame	Required for Front Stabilizer

Chassis data is minimum general requirements-not for engineering.  
Actual dimensions and truck data will depend on truck selection and axle configuration.

**OPTIONS**



**Radio Remote Control**

Interference protected radio remotes let you get closer to your work and have full control over your machine.



**Material Handling Jib**

Equip your HiReach platform with a removable material handling jib crane to lift up to 1,000 lbs into the platform.



**High Capacity Boom Winch**

Explore the 5,900 lb or 2,000 lb capacity boom winch options that convert the HiReach into a combination aerial work platform and crane.



**Outrigger Pad Holders**

Outrigger pad holders safely store your pads for travel and leave plenty of room for tool boxes.



**Bed Accessories**

Mount a wide variety of tool accessories including welders, power washers, and generators on the bed with lines to the platform.



**Platform Accessories**

Choose from a list of platform accessories including 110V outlets, welding leads, hydraulic tools, and much more.



**Outrigger Extensions**

Our pin-on outrigger extensions give you extra clearance for work on hills and around guardrails.

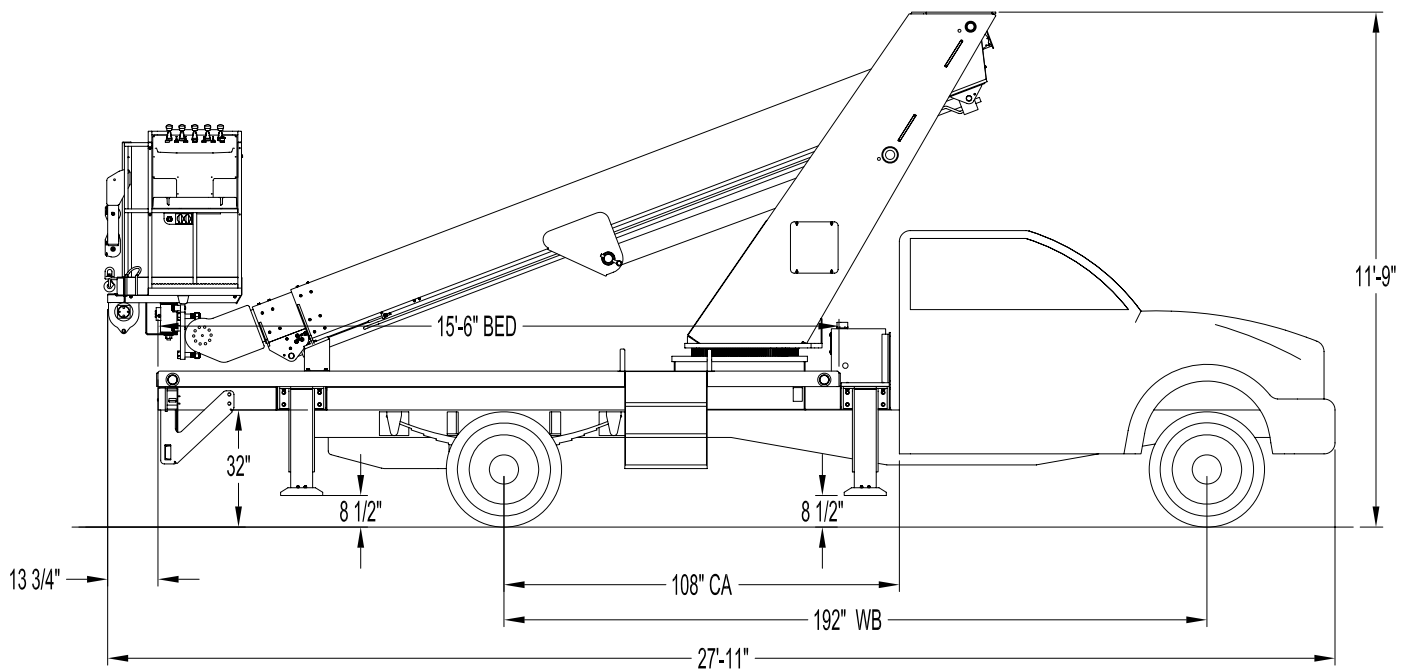


**Line Body**

Let us work with you to customize a line body to secure your tools and supplies the best way for your application.



### V60F SIDE VIEW DIAGRAM



- |  |                         |   |                      |
|--|-------------------------|---|----------------------|
| • <b>Working Height</b>                | 63' / 19,2 m            | • <b>Powered Boom Sections</b>          | 3                    |
| • <b>Working Side Reach</b>            | 38' / 11,6 m            | • <b>Overall Height</b>                 | 11'9" / 3,6 m        |
| • <b>Platform Capacity</b>             | 500 lbs / 227 kg        | • <b>Unit Weight (Bare)</b>             | 7,760 lbs / 3520 kg  |
| • <b>Platform Size</b>                 | 30" x 40" / 76 x 102 cm | • <b>Outrigger Spread Main</b>          | 8' / 2,4m            |
| • <b>Platform Type</b>                 | Top-Mount               | • <b>Outrigger Spread Auxiliary</b>     | 8' / 2,4m            |
| • <b>Lifting Capacity (Main Winch)</b> | N/A                     | • <b>Front Gross Axle Weight Rating</b> | 7,000 lbs / 3175 kg  |
| • <b>Jib Winch</b>                     | 500 lbs / 227 kg        | • <b>Rear Gross Axle Weight Rating</b>  | 13,500 lbs / 6123 kg |

**TECHNICAL SPECIFICATIONS**

**Maximum Platform Height:** 58' ground to platform floor.

**Working Range:** 63' max. height and 38' max. side reach.

**Work Platform:** 30"x40" Top-Mount work platform with 42" high rails. Equipped with two safety lanyard attachment loops and one safety harness and 72" lanyard. Platform capacity 500 lbs.

**Platform Leveling System:** Controller output module sends PWM signal to platform level in/out valve to keep platform within 0.2 degrees of level. Platform maintains a level position relative to the chassis frame in all operating positions. Leveling switch can be used to manually set the platform to any position desired while working.

**Platform Controls:** Three proportional electric control handles mounted in platform provide boom extension, lift and rotation. Selector switches provide platform rotation, enabling, manual leveling, engine speed, engine start/stop, emergency stop and optional jib winch. Control handles incorporate safety collars.

**Lower Controls:** Selector switches provide same functions as upper controls, with LCD screen to display function parameter adjustments, sensor readings, active function, input/output, and CANBUS device status. Controls mounted to roadside of turret and include upper control overrides.

**Outrigger Controls:** Parallel open-center stack valve for lever-operated control of right and left outriggers. The outrigger valves are mounted at the rear, under each corner of the bed with roadside valve controlling roadside outriggers and curbside valve controlling curbside outriggers.

**Outriggers:** "A" type modular design front and rear outriggers with 8' spread.

**Frame:** One piece, all welded, box-

type fabrication with integral outrigger mounts.

**Turret:** Reverse offset turret is one-piece weldment mounted on turntable. Turret rotates on large diameter ball bearing.

**Rotation:** Continuous turret rotation with no stops. Hydraulic motor drives turret through self-locking gear box.

**Boom:** Steel rectangular tube sections. Assembly includes heavy-duty cylinder fittings, pivot pins, and replaceable wear pads. Steel cable carrier mounted internal to boom.

**Boom Extension:** One double acting 2.5" cylinder extends the boom sections.

**Lift:** One double-acting full displacement, long stroke cylinder, provides smooth and stable boom elevation. Holding valve prevents boom from falling in event of hose failure.

**Cylinders:** All cylinders use microhoned cylinder tubing, chrome shafts, top grade packing and protective rod wipers. Cylinder-mounted holding valves provided on all load-holding cylinders.

**Hoses:** All high pressure hoses are wire braid reinforced with a minimum safety factor of 4 to 1.

**Oil Tank Capacity:** 20 gallon mounted to the top of the subframe.

**Hydraulic System:** Operating pressure is 3,000 PSI. System is parallel open center type and is equipped with liquid-filled pressure gauge.

**Pump:** Gear or clutch type, direct mount to truck PTO.

**PTO:** Heavy-duty, high-speed. Engaged from cab.

**Cab Equipment:** PTO switch with indicator lights installed in truck cab. Engine speed control and start/stop installed with control switches in platform remote control box and also located at lower controls. U/L approved

5:BC dry chemical fire extinguisher installed in truck cab.

**Operators Manual & Video:** Two CDs and one printed copy of operation, maintenance, safety and parts manual provided with each unit. Operational and safety video provided at delivery.

**Installation:** Unit installed on truck, painted, system and tank filled with oil, tested, inspected, and ready to operate.

**Standard Paint:** Paint boom and turret white, outriggers, bed, and boxes black.

**Bumper:** Bureau of Motor Carrier Safety rear bumper.

**Weight:** Approximately 7,760 lbs. with 15'6" steel-floor bed less truck.

**Truck Chassis Required:** Approx. 108" C.A., 7,000 lb. front axle and 19,500 lb. GVWR required. Trucks must have heavy-duty front and rear springs, 12V electrical system with high capacity alternator, cab clearance stop/tail/backup lights, and I.D. lamps. Recommended GVWR is minimum for HI-REACH with flatbed only. Contact factory when additional equipment is to be added.

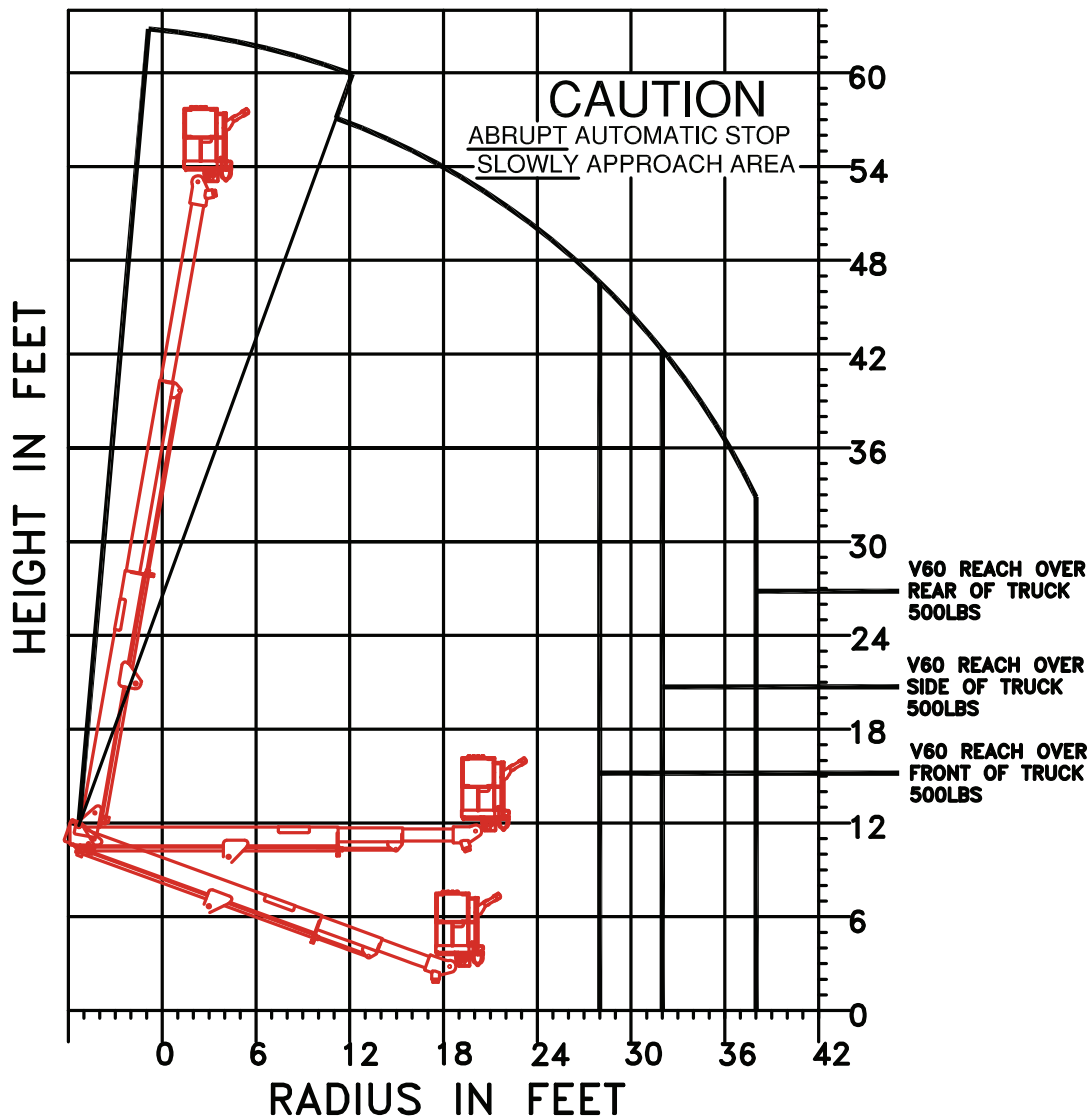
**Options:**

- 500 lb Capacity Platform Jib Attachment.
- Air Line and 110V Lines to Platform.
- Custom Toolboxes or Linebody.
- Wood or Steel Bed.
- Non-Slip Steel Ladder to Bed.
- Non-CDL Chassis Configuration.
- Much More....

Elliott Equipment Company reserves the right to change the specification of any unit at any time without prior notice. This brochure is only a statement of general specifications on the date of this publication. For more detailed info on specific Elliott trucks go to [www.elliottequip.com](http://www.elliottequip.com)

MAXIMUM PLATFORM CAPACITY

TOTAL PLATFORM CAPACITY 500LBS  
JIB LOAD PLUS PERSONNEL



USE OUTRIGGERS  
AT ALL TIMES

AVOID JERKING  
LOADS

## CHASSIS DATA

	V60F
Wheelbase (WB)	192" / 488 cm
Cab to Axle (CA)	108" / 274 cm
Cab to End of Frame (EOF)	100" / 254 cm
Frame Section Modulus	16.6 in3 / 120,000 psi / 827,371 kPa
Front Axle Gross Weight Rating	7,000 lb / 3175 kg
Rear Axle Gross Weight Rating	13,500 lb / 6123 kg

Chassis data is minimum general requirements-not for engineering.  
Actual dimensions and truck data will depend on truck selection and axle configuration.

## OPTIONS



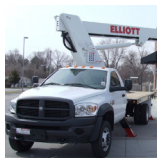
### 110 Volt Line to Platform

Power your tools from within the platform with a 110 volt electrical outlet below the control box.



### Material Handling Jib

Equip your HiReach platform with a removable material handling jib crane to lift up to 500 pounds with Elliott's electric winch system.



### Non-CDL Chassis Options

Take advantage of the low chassis GVWR requirements by mounting this unit on a smaller truck that doesn't require a CDL license to operate.



### 15'6" Low Profile Wood Bed

Take advantage of the low weight of a wooden bed to increase payload capacity and reduce overall weight.



### Bed Accessories

Mount a wide variety of tool accessories including welders and generators on the bed.



### Ergonomic Steel Steps to Bed

Elliott's non-slip steel steps are cut into the bed frame providing easy access to the turret controls and bed.



### Custom Bumper Cutout

Let us cut your business name into the steel ICC bumper for a clean and attractive signature on the job site.

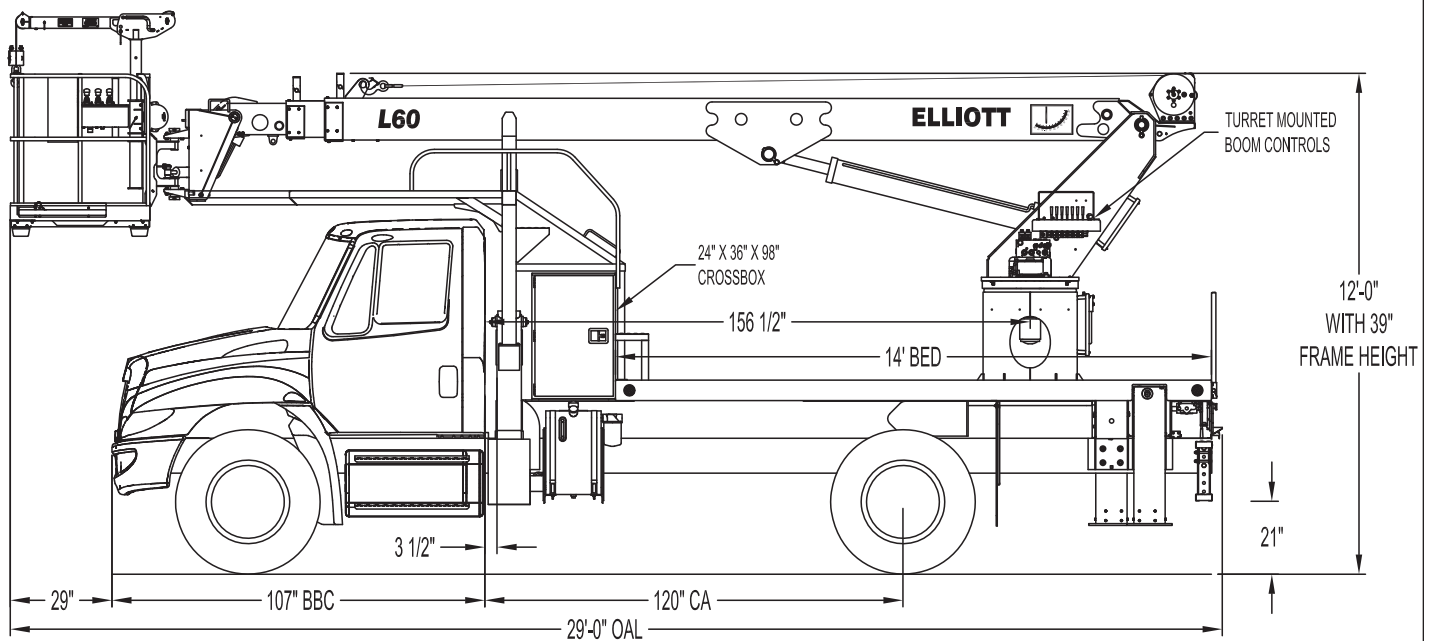


### Customized Service/Line Body

Let us work with you to customize a line body to secure your tools and supplies the best way for your application.



### L60R SIDE VIEW DIAGRAM



Dimensions approximate and vary with truck specifications.

G.V.W.R.-25,999 lbs. Front axle-10,000 lbs. Rear axle-19,000 lbs.

- |  |                         |                                     |                        |
|--|-------------------------|-------------------------------------|------------------------|
| • <b>Working Height</b>                | 63' / 19,2 m            | • <b>Powered Boom Sections</b>      | 3                      |
| • <b>Working Side Reach</b>            | 56' / 17,1 m            | • <b>Overall Height</b>             | 12'0" / 3,6 m          |
| • <b>Platform Capacity</b>             | 500 lbs / 227 kg        | • <b>Unit Weight (Bare)</b>         | 13,500 lbs / 6123 kg   |
| • <b>Platform Size</b>                 | 40 x 60" / 102 x 152 cm | • <b>Outrigger Spread Main</b>      | 18' / 5,5m             |
| • <b>Platform Type</b>                 | EZR Removable           | • <b>Outrigger Spread Auxiliary</b> | 12'6" / 3,8 m          |
| • <b>Lifting Capacity (Main Winch)</b> | 5,900 lbs / 2676 kg     | • <b>Minimum Front Axle GAWR</b>    | 10,000 lbs / 4536 kg   |
| • <b>Jib Winch</b>                     | 500 lbs / 227 kg        | • <b>Minimum Vehicle GVWR</b>       | 25,999 lbs / 11 793 kg |

**TECHNICAL SPECIFICATIONS**

**Maximum Platform Height:** 57' ground to platform floor.

**Working Range:** 63' max. working height and 56' max. side reach.

**Work Platform:** Updated 40"x60" EZR end-hung work platform with 40" high rails and aluminum floor. Equipped with two safety lanyard attachment loops and two safety harnesses with 72" lanyards. Platform capacity 500 lbs.

**Platform Leveling System:** Hydraulic "closed" system consisting of twin platform cylinders interacting with a boom-actuated master cylinder mounted in boom support turret. System provided with factory-set relief valves to compensate for oil expansion or overload during platform leveling operation. Remote releveling controls provided in platform and at ground controls to give precise releveling capability.

**Platform Controls:** Three individual proportional electronic controllers meter pilot-operated, pressure-compensated modulating valves. Remote controls for boom operations from platform operate from a steel remote control box. Hi/Lo range, start/stop and engine speed switches are also located at platform. Electric remote control cable extends through the electrical slip ring to cable carrier on side of boom to extending boom sections.

**Lower Controls:** Mounted on roadside of turret.

**Outrigger Controls:** Parallel open-center stack valve for lever-operated control of right and left outriggers. The outrigger valves are mounted at the rear, under each corner of the bed with roadside valve controlling roadside outriggers and curbside valve controlling curbside outriggers.

**Outriggers:** One set of "MH" type main outriggers at rear of bed with 18' spread. "A" overframe auxiliary

outriggers with 12' spread behind cab.

**Frame:** One piece, all welded, box-type fabrication with integral outrigger mounts.

**Turret:** Reverse offset turret is one-piece weldment mounted on turret box. Turret rotates on large diameter ball bearing.

**Rotation:** Continuous turret rotation with no stops. Hydraulic motor drives turret through self-locking gear box.

**Boom:** Steel rectangular tube sections. Assembly includes heavy-duty cylinder fittings, pivot pins, and replaceable wear pads.

**Boom Extension:** Two opposing "piggyback" cylinders extend the boom sections.

**Lift:** One single-acting full displacement, long stroke cylinder, provides smooth and stable boom elevation. Holding valve prevents boom from falling in event of hose failure.

**Cylinders:** All cylinders use microhoned cylinder tubing, chrome shafts, top grade packing and protective rod wipers. Cylinder-mounted holding valves provided on all load-holding cylinders.

**Hoses:** All high pressure hoses are wire braid reinforced with a minimum safety factor of 4 to 1.

**Oil Tank Capacity:** 35 gallon mounted to truck frame on roadside.

**Hydraulic System:** Operating pressure is 2,500 PSI. System is parallel open center type and is equipped with liquid-filled pressure gauge. Oil is supplied to upper cylinders through hydraulic union in center of turret to cable carrier along side of the boom.

**Pump:** Gear type, direct mount to truck PTO.

**PTO:** Heavy-duty, high-speed with switch in cab.

**Cab Equipment:** PTO switch with

indicator lights installed in truck cab. Engine speed control and start/stop installed with control switches in platform remote control box and also located at lower controls. U/L approved 5:BC dry chemical fire extinguisher installed in truck cab.

**Operators Manual & Video:** Two CDs and one printed copy of operation, maintenance, safety and parts manual provided with each unit. Operational and safety video provided at delivery.

**Installation:** Unit installed on truck, painted, system and tank filled with oil, tested, inspected, and ready to operate.

**Standard Paint:** Paint boom and turret red, outriggers red, and bed and boxes black. Top of steel bed painted with black nonskid surface.

**Bumper:** Bureau of Motor Carrier Safety rear bumper.

**Weight:** Approximately 13,500 lbs. with 16' steel-floor bed less truck.

**Truck Chassis Required:** Approx. 120" C.A. RBM 900,000 in.-lb. per rail, 10,000 lb. front axle and 25,999 lb. GVWR required. Trucks must have increased cooling, heavy-duty front and rear springs, 12V electrical system with high capacity alternator, cab clearance stop/tail/backup lights, and I.D. lamps. Recommended GVWR is minimum for HI-REACH with flatbed only. Contact factory when additional equipment is to be added.

**Options:**

5,900 lb or 2,000 lb Capacity Boom Winch.

500 lb Capacity Material Handling Jib.

Welder, Air, and 110V Lines to Platform.

Cab Guard With Platform Access.

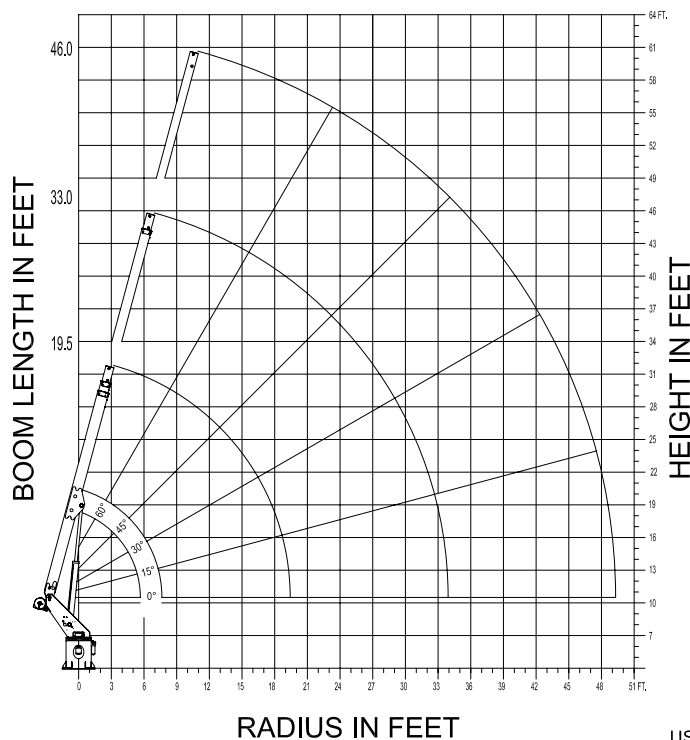
Underbody Toolboxes

Much more....

Elliott Equipment Company reserves the right to change the specification of any unit at any time without prior notice. This brochure is only a statement of general specifications on the date of this publication. For more detailed info on specific Elliott trucks go to [www.elliottequip.com](http://www.elliottequip.com)

**MAXIMUM WORKING LOADS - BOOM WINCH**

**ELLIOTT**  
EQUIPMENT COMPANY  
**MODEL L60**



DO NOT PAINT OVER ANY LABELS

**MAXIMUM WORKING LOADS  
CRANE OPERATION**

WINCH LINE LOAD (POUNDS) ON BOOM  
SHEAVE WITH PLATFORM REMOVED.

RADIUS (FT.)	19.5' BOOM LENGTH		33.0' BOOM LENGTH	
	ANGLE (DEG.)	LOAD (LBS.)	ANGLE (DEG.)	LOAD (LBS.)
5	75	5,900		
7	64	5,900	75	2,200
9	60	5,900	71	2,200
12	47	5,900	66	2,200
13	45	5,900	64	2,200
16	33	5,900	60	2,200
17	30	5,900	58	1,800
19	0	4,500	54	1,800
24			45	1,600
29			30	1,200
33			15	1,100
34			0	1,100

46.0' BOOM LENGTH		
RADIUS (FT.)	ANGLE (DEG.)	LOAD (LBS.)
12	75	2,200
13	73	2,200
16	69	2,200
17	67	2,200
19	65	2,200
24	60	2,200
29	52	1,600
33	47	1,600
34	45	1,600
42	30	1,200
48	15	1,100
49	0	1,100

USE OUTRIGGERS AT ALL TIMES \* AVOID JERKING LOADS 360°  
\* USE 2 PART LINE FOR LOADS OVER 2,500 LBS.  
**DEDUCT 500 LBS. WITH PLATFORM ATTACHED**

1073370 093003

**MAXIMUM WORKING LOADS - JIB WINCH**

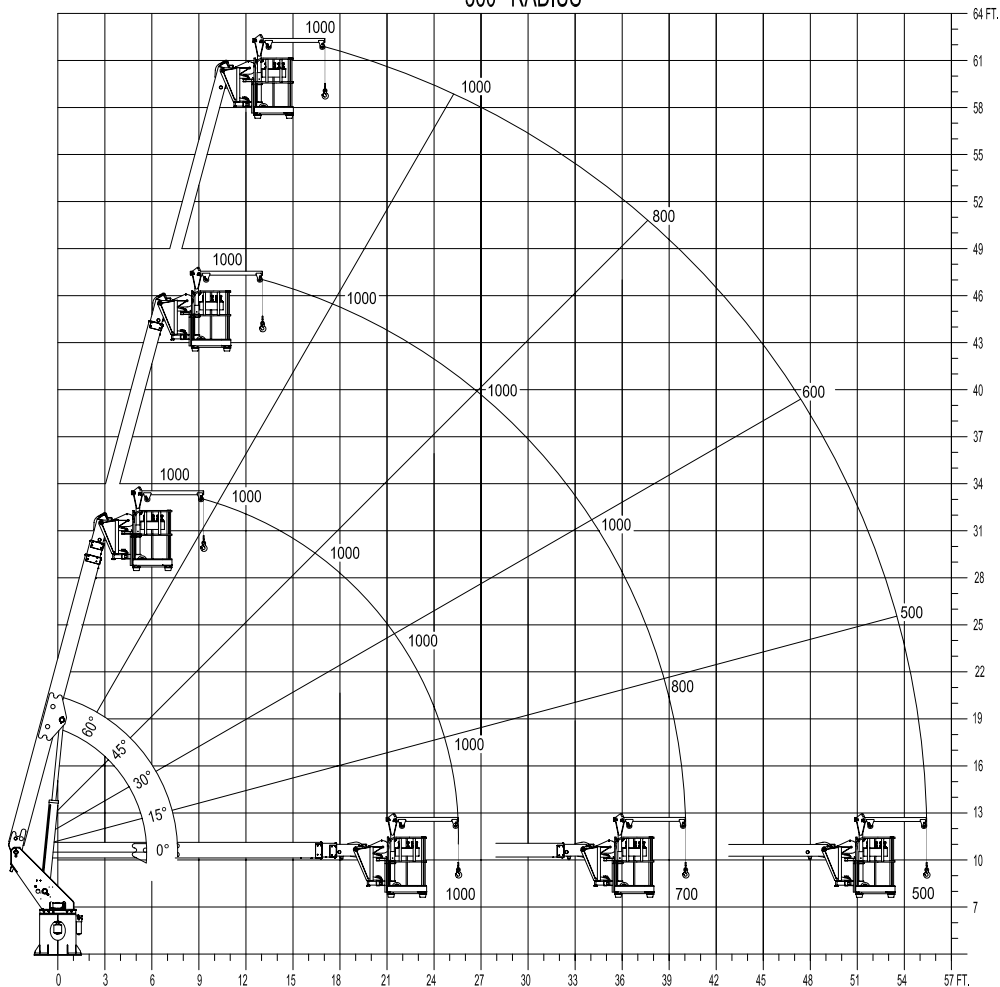
**MAXIMUM WORKING LOADS  
500 LBS. PLATFORM JIB OPERATION**

**MODEL L60**

TOTAL PLATFORM CAPACITY (JIB LOAD PLUS PERSONNEL)

USE OUTRIGGERS AT ALL TIMES • AVOID JERKING LOAD

360° RADIUS



**JIB 500 LBS. MAXIMUM • PERSONNEL 500 LBS. MAXIMUM**

**ELLIOTT**

DO NOT PAINT OVER ANY LABELS

**EQUIPMENT COMPANY**

1070370 062003

## CHASSIS DATA

	L60R
Wheelbase (WB)	187" / 475 cm
Cab to Axle (CA)	120" / 305 cm
Cab to End of Frame (EOF)	211" / 536 cm
Frame Section Modulus	8.2 in3 / 110,000 psi / 758,450 kPa
Front Axle Gross Weight Rating	10,000 lb / 4536 kg
Rear Axle Gross Weight Rating	19,000 lb / 8618 kg
Extended Front Frame	N/A

Chassis data is minimum general requirements-not for engineering.  
Actual dimensions and truck data will depend on truck selection and axle configuration.

## OPTIONS



### Automatic Safety Rotation Lockout

Reduce outrigger spread with Elliott's automatic safety rotation lockout option allowing you to safely shortjack MH outriggers for work in confined spaces.



### Stowable Platform Jib Winch

Equip your HiReach platform with Elliott's unique jib winch that stows in the platform and features an extendable boom and mast to lengthen your reach and reduce setup times.



### High Capacity Boom Winch

Explore the 5,900 lb or 2,000 lb capacity boom winch options that convert the HiReach into a combination aerial work platform and material handler.



### Outrigger Pad Holders

Outrigger pad holders safely store your pads for travel and leave plenty of room for tool boxes.



### Bed Accessories

Mount a wide variety of tool accessories including welders, power washers, and generators on the bed with lines to the platform.



### Platform Accessories

Choose from a list of "Office in the Sky" platform accessories including 110V outlets, welding leads, oxy/aceytlene hoses, hydraulic tools, and much more.



### Cab Guard and Walkway

Choose a steel cab windshield guard for added cab protection and walking access from the bed to the platform while in the stowed position.

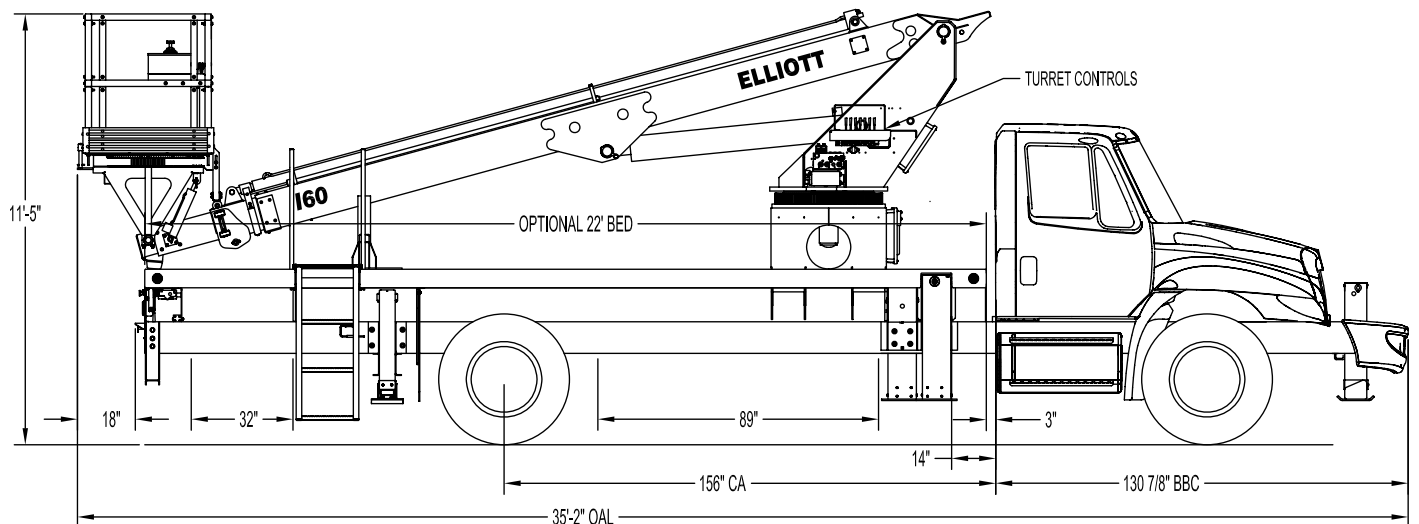


### Custom Toolbox Packages

Let us work with you to customize your storage options by choosing from an array of steel or aluminum underbody and abovebody toolboxes.



### I60F SIDE VIEW DIAGRAM



- **Working Height** 65' / 19,8 m
- **Working Side Reach** 52' / 15,8 m
- **Platform Capacity** 600 lbs / 272 kg
- **Platform Size** 40" x 60" / 102 x 152 cm
- **Platform Type** Insulated Top-Mount
- **Lifting Capacity (Main Winch)** 3,650 lbs / 1656 kg
- **Insulation Rating** 46kV Category C

- **Powered Boom Sections** 3
- **Overall Height** 11'5" / 3,4 m
- **Unit Weight (Bare)** 16,800 lbs / 7620 kg
- **Outrigger Spread Main** 18' / 5,5 m
- **Outrigger Spread Auxiliary** 8' / 2,4 m
- **Front Gross Axle Weight Rating** 13,000 lbs / 5897 kg
- **Rear Gross Axle Weight Rating** 20,000 lbs / 9072 kg

## TECHNICAL SPECIFICATIONS

**Maximum Platform Height:** 60' ground to platform floor.

**Working Range:** 65' max. height and 52' max. side reach.

**Work Platform:** 40x60" Insulated Top-Mount work platform with 40" high fiberglass rails and a grated fiberglass floor. Equipped with two safety lanyard attachment loops and two safety harnesses and 72" lanyards. Platform capacity 600 lbs.

**Platform Leveling System:** Hydraulic "closed" system consisting of twin platform cylinders interacting with a boom-actuated master cylinder mounted in boom support turret. System provided with factory-set relief valves to compensate for oil expansion or overload during platform leveling operation. Remote releveling controls provided in platform and at ground controls to give precise releveling capability.

**Platform Controls:** Control signals to be transmitted into work platform via plastic fiberoptic "light conduction" from turret control station. Fiberoptic system powered by battery with a backup located in truck cab with 12-volt charger. Single joystick control with finger enable switch in platform to provide boom extension, elevation and rotation controls. Control cable shall extend through the column to the cable carrier and through a fiberglass tube in boom sections. Lower boom controls shall include all general control options including engine speed, start/stop, and upper controls with override.

**Lower Controls:** Mounted on curbside of turret.

**Outrigger Controls:** Parallel open-center stack valve for lever-operated control of right and left outriggers. The outrigger valves are mounted at the rear, under each corner of the bed with roadside valve controlling roadside outriggers and curbside valve

controlling curbside outriggers.

**Outriggers:** "MH" type out-and-down main outriggers with 18' spread. "A" type underslung secondary outriggers with 8' spread. Front stabilizer required.

**Frame:** One piece, all welded, box-type fabrication with integral outrigger mounts.

**Turret:** Reverse offset turret is one-piece weldment mounted on turret box. Turret rotates on large diameter ball bearing.

**Rotation:** Continuous turret rotation with no stops. Hydraulic motor drives turret through self-locking gear box.

**Boom:** Steel rectangular tube sections and one fiberglass section 9" high x 7" wide with a 3/4" wall section. Assembly includes heavy-duty cylinder fittings, pivot pins, and replaceable wear pads.

**Boom Extension:** Two opposing "piggyback" extension cylinders extend the boom sections.

**Lift:** One single-acting full displacement, long stroke cylinder, provides smooth and stable boom elevation. Holding valve prevent boom from falling in event of hose failure.

**Cylinders:** All cylinders use microhoned cylinder tubing, chrome shafts, top grade packing and protective rod wipers. Cylinder-mounted holding valves provided on all load-holding cylinders.

**Hoses:** All high pressure hoses are wire braid reinforced with a minimum safety factor of 4 to 1.

**Oil Tank Capacity:** 35 gallon mounted to truck frame on roadside.

**Hydraulic System:** Operating pressure approximately 2,500 PSI. System is parallel open center type and is equipped with liquid-filled pressure gauge. Oil is supplied to upper cylinders through hydraulic union in center of turret to cable carrier along side of the boom.

**Pump:** Gear type, direct mount to truck PTO.

**PTO:** Heavy-duty, high-speed. Cable engaged from cab.

**Cab Equipment:** PTO cable or switch with indicator lights installed in truck cab. Engine speed control and start/stop installed with control switches in platform remote control box and also located at lower controls. U/L approved 5:BC dry chemical fire extinguisher installed in truck cab.

**Operators Manual & Video:** Two CDs and one printed copy of operation, maintenance, safety and parts manual provided with each unit. Operational and safety video provided at delivery.

**Installation:** Unit installed on truck, painted, system and tank filled with oil, tested, inspected, and ready to operate.

**Standard Paint:** Paint boom and turret red, outriggers red, and bed and boxes black. Top of steel bed painted with black nonskid surface.

**Bumper:** Bureau of Motor Carrier Safety rear bumper.

**Weight:** Approximately 16,800 lbs. with 22' steel-floor bed less truck.

**Truck Chassis Required:** Approx. 156" C.A., RBM 1,600,000 in-lb. per rail, 13,000 lb. front axle and 33,000 lb. GVWR required. Trucks must front frame extensions, increased cooling, heavy-duty front and rear springs, 12V electrical system with high capacity alternator, cab clearance stop/tail/backup lights, and I.D. lamps. Recommended GVWR is minimum for HiReach with flatbed only. Contact factory when additional equipment is to be added.

**Options:**

3,650 or 2,000 lb Capacity Boom Winch  
500 lb Capacity Platform Jib Attachment  
Much More...

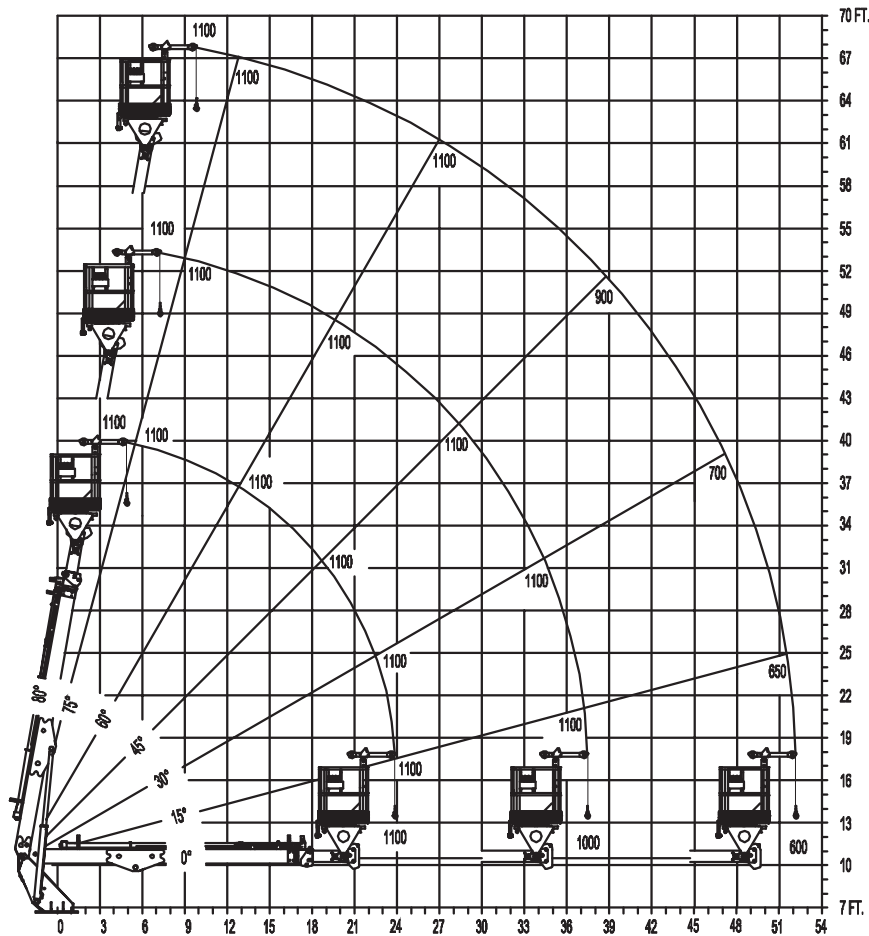
Elliott Equipment Company reserves the right to change the specification of any unit at any time without prior notice. This brochure is only a statement of general specifications on the date of this publication. For more detailed info on specific Elliott trucks go to [www.elliottequip.com](http://www.elliottequip.com)

**MAXIMUM RANGE CAPABILITIES**

**MAXIMUM WORKING LOADS  
BASKET JIB OPERATION**

**TOTAL BASKET CAPACITY (JIB LOAD PLUS PERSONNEL)**

**USE OUTRIGGERS AT ALL TIMES AVOID JERKING LOAD  
360° RADIUS**



**JIB 500 Lbs. MAXIMUM PERSONNEL 600 Lbs. MAXIMUM**

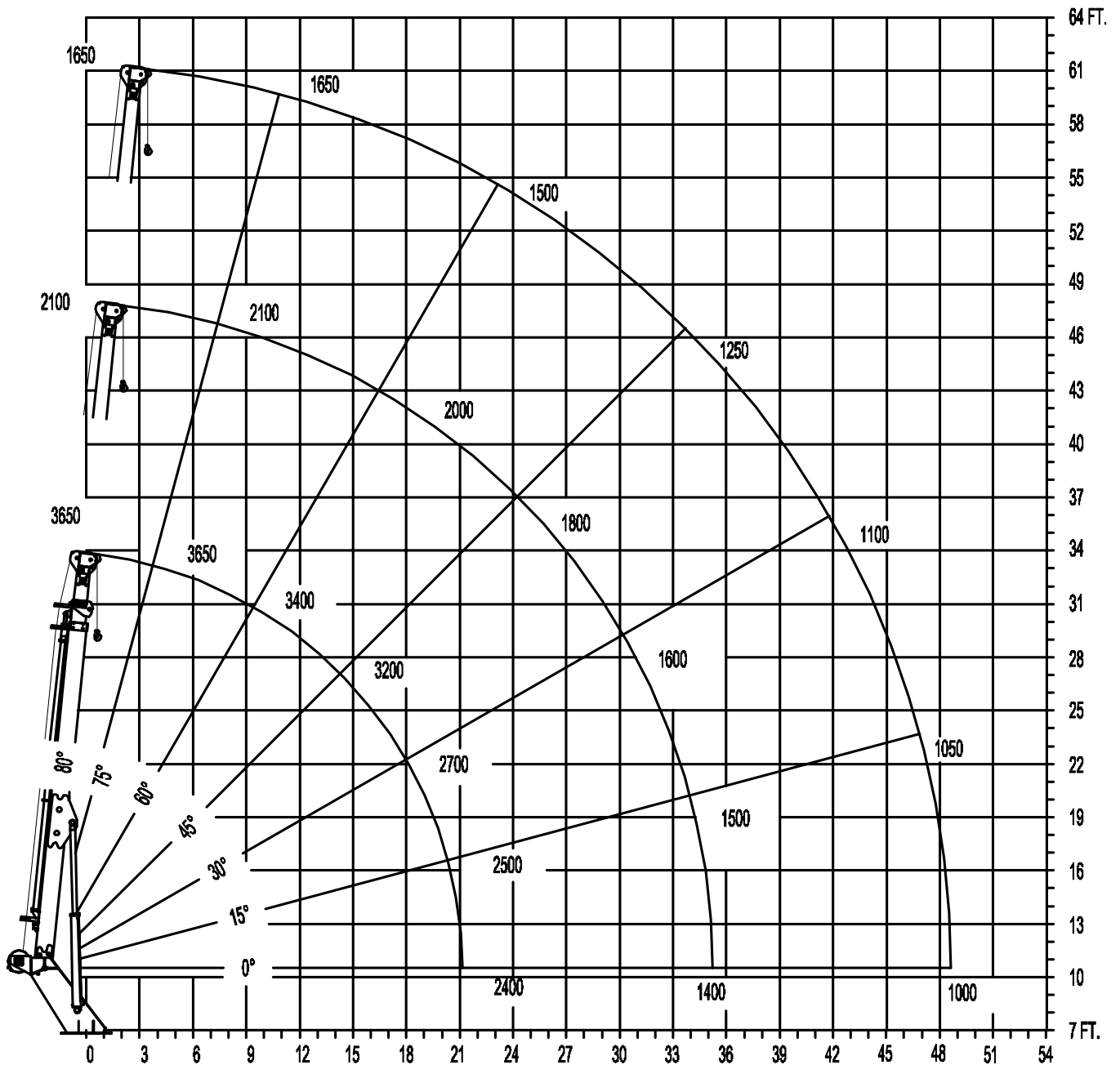
**ELLIOTT**  
EQUIPMENT COMPANY

**MAXIMUM LIFTING CAPABILITIES**

**WINCH LINE LOAD (POUNDS) WITH BUCKETS OR PLATFORM REMOVED**

**USE OUTRIGGERS AT ALL TIMES • AVOID JERKING LOAD**

**360° RADIUS • 1500 P.S.I. MAX**



## CHASSIS DATA

	I60F
Wheelbase (WB)	223" / 556 cm
Cab to Axle (CA)	156" / 396 cm
Cab to End of Frame (EOF)	266" / 676 cm
Frame Section Modulus	13.3 in3 / 110,000 psi
Front Axle Gross Weight Rating	13,000 lb / 5897 kg
Rear Axle Gross Weight Rating	20,000 lb / 9072 kg
Extended Front Frame	Required for Front Stabilizer

Chassis data is minimum general requirements-not for engineering.  
Actual dimensions and truck data will depend on truck selection and axle configuration.

## OPTIONS



### Radio Remote Control

Interference protected radio remotes hard-wired to the platform let you get closer to your work and have full control over your machine.



### Material Handling Jib

Equip your HiReach platform with a material handling jib crane to handle up to 500 pounds from within arm's reach..



### MH Outriggers With Shortjacking

Reduce outrigger spread with MH outriggers behind the cab and Elliott's Automatic Safety Rotation Lockout to operate your HiReach in confined spaces.



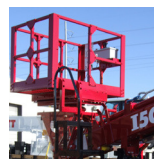
### Outrigger Pad Holders

Outrigger pad holders safely store your pads for travel and leave plenty of room for tool boxes.



### Bed Accessories

Mount a wide variety of tool accessories including welders, power washers, and generators on the bed with lines to the platform.



### Platform Accessories

Choose from a list of platform accessories including 110V outlets, welding leads, hydraulic tools, and much more.



### Outrigger Extensions

Our pin-on outrigger extensions give you extra clearance for work on hills and around guardrails.

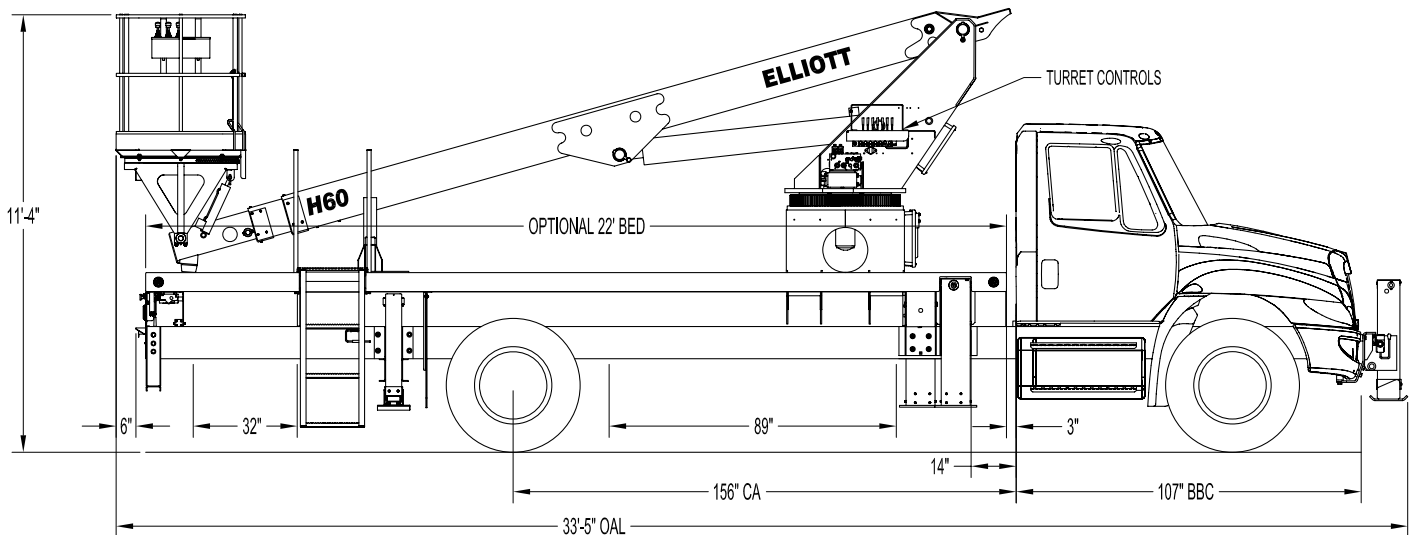


### Line Body

Let us work with you to customize a line body to secure your tools and supplies the the best way for your application.



### H60F SIDE VIEW DIAGRAM



- |  |                          |   |                      |
|--|--------------------------|---|----------------------|
| • <b>Working Height</b>                | 65' / 19,8 m             | • <b>Powered Boom Sections</b>          | 3                    |
| • <b>Working Side Reach</b>            | 49' / 14,9 m             | • <b>Overall Height</b>                 | 11'4" / 3,4 m        |
| • <b>Platform Capacity</b>             | 600 lbs / 272 kg         | • <b>Unit Weight (Bare)</b>             | 16,500 lbs / 7484 kg |
| • <b>Platform Size</b>                 | 40' x 60" / 102 x 152 cm | • <b>Outrigger Spread Main</b>          | 18' / 5,5 m          |
| • <b>Platform Type</b>                 | Top-Mount                | • <b>Outrigger Spread Auxiliary</b>     | 8' / 2,4 m           |
| • <b>Lifting Capacity (Main Winch)</b> | 5,900 lbs / 2676 kg      | • <b>Front Gross Axle Weight Rating</b> | 13,000 lbs / 5897 kg |
| • <b>Jib Winch</b>                     | 1,000 lbs / 454 kg       | • <b>Rear Gross Axle Weight Rating</b>  | 20,000 lbs / 9072 kg |

## TECHNICAL SPECIFICATIONS

**Maximum Platform Height:** 60' ground to platform floor.

**Working Range:** 65' max. working height and 49' max. side reach.

**Work Platform:** 40x60" Top-Mount work platform with 40" high rails. Equipped with two safety lanyard attachment loops and two safety harnesses and 72" lanyards. Platform capacity 600 lbs.

**Platform Leveling System:** Hydraulic "closed" system consisting of twin platform cylinders interacting with a boom-actuated master cylinder mounted in boom support turret. System provided with factory-set relief valves to compensate for oil expansion or overload during platform leveling operation. Remote releveling controls provided in platform and at ground controls to give precise releveling capability.

**Platform Controls:** Three individual proportional electronic controllers meter pilot-operated, pressure-compensated modulating valves. Remote controls for boom operations from platform operate from a removable remote control box. Hi/Lo range, start/stop and engine speed toggle controls are also located at platform. Electric remote control cable extends through the electrical slip ring to cable carrier on side of boom to extending boom sections.

**Lower Controls:** Mounted on roadside of turret.

**Outrigger Controls:** Parallel open-center stack valve for lever-operated control of right and left outriggers. The outrigger valves are mounted at the rear, under each corner of the bed with roadside valve controlling roadside outriggers and curbside valve controlling curbside outriggers.

**Outriggers:** "MH" out and down type main outriggers with 18' spread behind cab. "A" type auxiliary outriggers with 8'

spread at rear. Front bumper stabilizer required for 360 degree working area.

**Frame:** One piece, all welded, box-type fabrication with integral outrigger mounts.

**Turret:** Reverse offset turret is one-piece weldment mounted on turret box. Turret rotates on large diameter ball bearing.

**Rotation:** Continuous turret rotation with no stops. Hydraulic motor drives turret through self-locking gear box.

**Boom:** Steel rectangular tube sections. Assembly includes heavy-duty cylinder fittings, pivot pins, and replaceable wear pads.

**Boom Extension:** Two opposing "piggyback" extension cylinders extend the boom sections.

**Lift:** One single-acting full displacement, long stroke cylinder, provides smooth and stable boom elevation. Holding valve prevent boom from falling in event of hose failure.

**Cylinders:** All cylinders use microhoned cylinder tubing, chrome shafts, top grade packing and protective rod wipers. Cylinder-mounted holding valves provided on all load-holding cylinders.

**Hoses:** All high pressure hoses are wire braid reinforced with a minimum safety factor of 4 to 1.

**Oil Tank Capacity:** 35 gallon mounted to truck frame on roadside.

**Hydraulic System:** Operating pressure is 2,500 PSI. System is parallel open center type and is equipped with liquid-filled pressure gauge. Oil is supplied to upper cylinders through hydraulic union in center of turret to cable carrier along side of the boom.

**Pump:** Gear type, direct mount to truck PTO.

**PTO:** Heavy-duty, high-speed. Switch engaged from cab.

**Cab Equipment:** PTO switch with indicator light installed in truck cab. Engine speed control and start/stop installed with control switches in platform remote control box and also located at lower controls. U/L approved 5:BC dry chemical fire extinguisher installed in truck cab.

**Operators Manual & Video:** Two CDs and one printed copy of operation, maintenance, safety and parts manual provided with each unit. Operational and safety video provided at delivery.

**Installation:** Unit installed on truck, painted, system and tank filled with oil, tested, inspected, and ready to operate.

**Standard Paint:** Paint boom and turret red, outriggers red, and bed and boxes black. Top of steel bed painted with black nonskid surface.

**Bumper:** Bureau of Motor Carrier Safety rear bumper.

**Weight:** Approximately 16,500 lbs. with 22' steel-floor bed less truck.

**Truck Chassis Required:** Approx. 156" C.A. RBM 1,600,000 in-lb. per rail, 13,000 lb. front axle and 33,000 lb. GVWR required. Trucks must have increased cooling, heavy-duty front and rear springs, front frame extensions, 12V electrical system with high capacity alternator, cab clearance stop/tail/backup lights, and I.D. lamps. Recommended GVWR is minimum for HiReach with flatbed only. Contact factory when additional equipment is to be added.

**Options:**

5,900 lb Capacity Boom Winch

1,000 lb Capacity Platform Jib.

Welder, Air, 110V Lines and More to Platform.

Custom Toolbox Configurations.

Much More....

Elliott Equipment Company reserves the right to change the specification of any unit at any time without prior notice. This brochure is only a statement of general specifications on the date of this publication. For more detailed info on specific Elliott trucks go to [www.elliottequip.com](http://www.elliottequip.com)

**MAXIMUM JIB LIFTING CAPABILITIES**

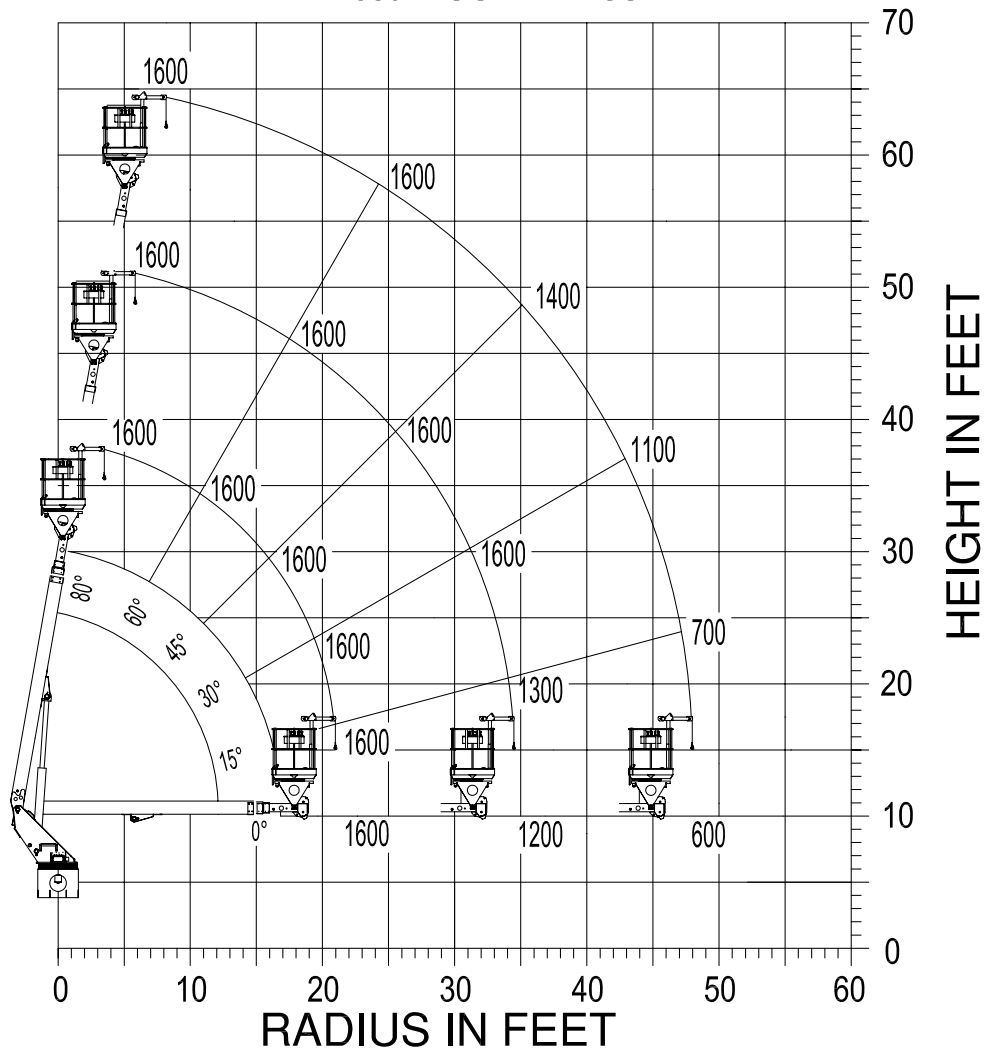
**MAXIMUM WORKING LOADS  
1,000 LBS. PLATFORM JIB OPERATION**

**MODEL H60**

**TOTAL PLATFORM CAPACITY (JIB LOAD PLUS PERSONNEL)**

USE OUTRIGGERS AT ALL TIMES • AVOID JERKING LOAD

360° BOOM RADIUS



**JIB 1,000 LBS. MAX. PERSONNEL 600 LBS. MAX.**

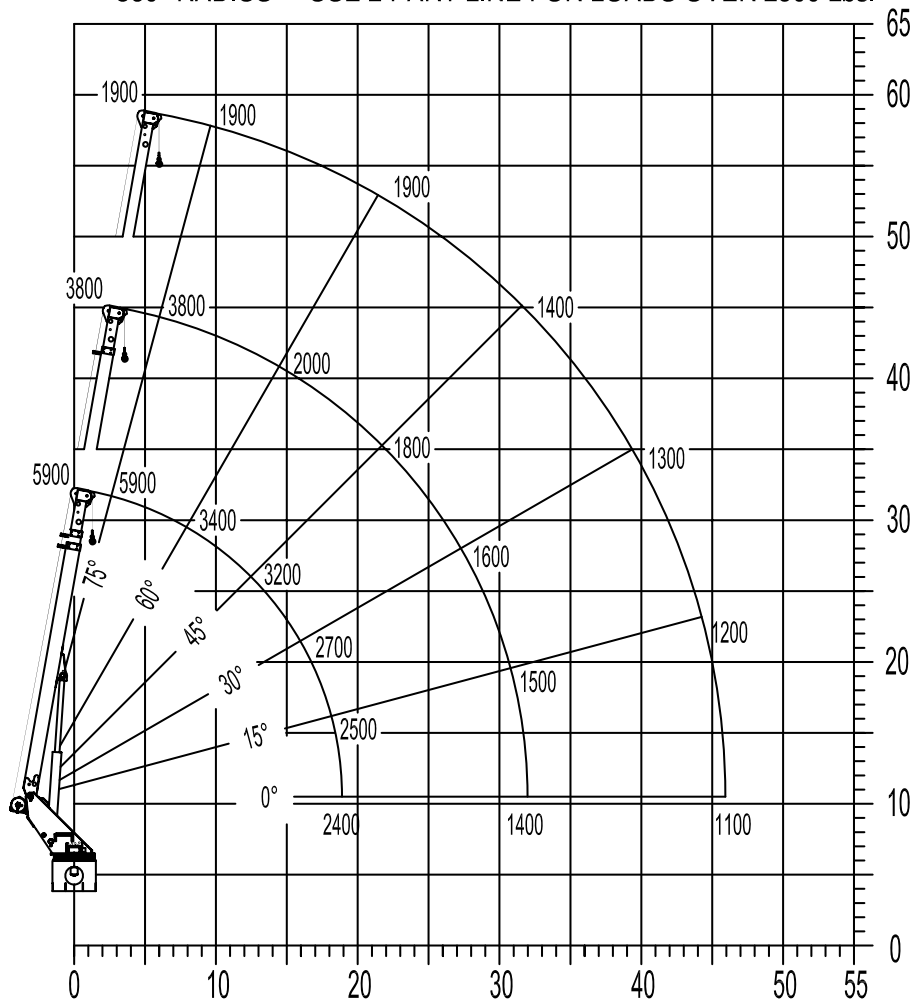
**ELLIOTT**  
EQUIPMENT COMPANY

1140370-040408

**MAXIMUM WINCH LIFTING CAPABILITIES**

**MAXIMUM WORKING LOADS  
CRANE OPERATION  
MODEL H60  
WINCH LINE LOAD (POUNDS) WITH BUCKETS OR PLATFORM REMOVED**

USE OUTRIGGERS AT ALL TIMES • AVOID JERKING LOAD  
360° RADIUS • USE 2 PART LINE FOR LOADS OVER 2500 Lbs.



DEDUCT 400 POUNDS WITH BUCKET OR PLATFORM ATTACHED



DO NOT PAINT OVER ANY LABELS

1072400-002303

## CHASSIS DATA

	H60F
Wheelbase (WB)	224" / 569 cm
Cab to Axle (CA)	156" / 396 cm
Cab to End of Frame (EOF)	272" / 691 cm
Frame Section Modulus	13.3 in3 / 120,000 psi
Front Axle Gross Weight Rating	13,000 lb / 5897 kg
Rear Axle Gross Weight Rating	20,000 lb / 9072 kg
Extended Front Frame	Required for Front Stabilizer

Chassis data is minimum general requirements-not for engineering.  
Actual dimensions and truck data will depend on truck selection and axle configuration.

## OPTIONS



### MH Outriggers With Shortjacking

Reduce outrigger spread with auxiliary MH outriggers and Elliott's Automatic Safety Rotation Lockout to operate your HiReach in confined spaces.



### Platform Material Handling Jib

Equip your HiReach platform with a material handling jib crane to lift up to 1,000 pounds right from the platform.



### High Capacity Boom Winch

Explore the 5,900 lb or 2,000 lb capacity boom winch options that convert your HiReach into a combination aerial work platform and crane.



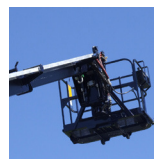
### Outrigger Pad Holders

Outrigger pad holders safely store your pads for travel and leave plenty of room for tool boxes.



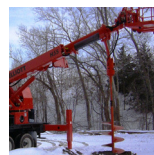
### Bed Accessories

Mount a wide variety of tool accessories including welders, power washers, and generators on the bed with lines to the platform.



### Platform Accessories

Choose from a list of platform accessories including 110V outlets, welding leads, hydraulic tools, and much more.



### Hydraulic 2-Speed Digger

Dig holes without requiring a second truck by using Elliott's stowable planetary digger system featuring 24", 36", and 48" auger options.



### Line Body

Let us work with you to customize a line body to secure your tools and supplies the the best way for your application.