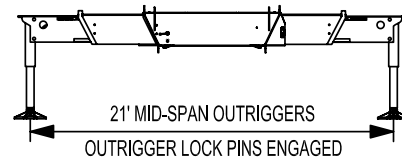


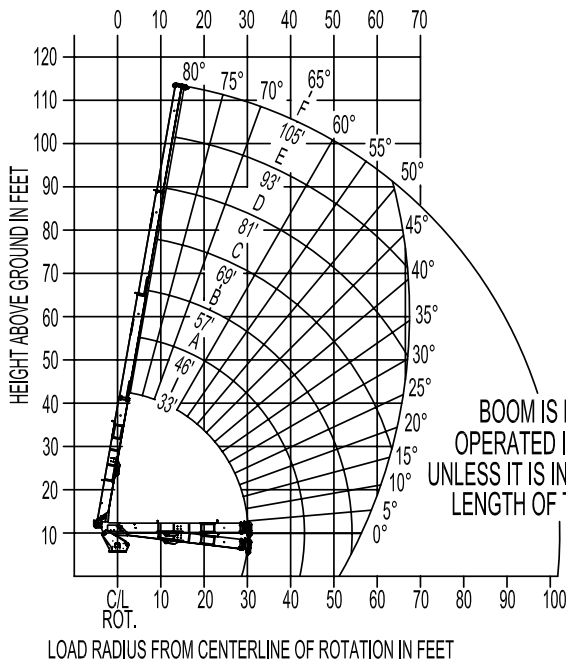
RANGE CHART - MAIN BOOM, MID-SPAN OUTRIGGERS



MODEL 5000 105-ft BOOM

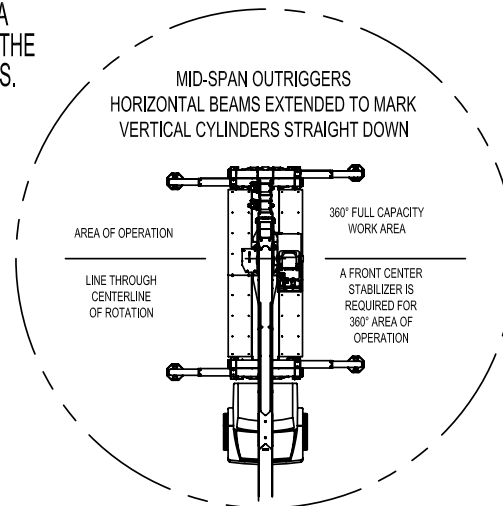


RANGE DIAGRAM WITH OUTRIGGERS IN MID-SPAN POSITION



NOTE:

1. Operate jib by radius when main boom is fully extended. Increase boom angle if necessary to maintain load radius.
2. When boom is retracted, operate jib by boom angles. Do not exceed any rated jib capacities at reduced boom lengths.
3. Capacities do not exceed stability based on ISO 4305-1991.
4. Load ratings above bold line are structurally limited.
5. Personnel handling is allowed only with full span outriggers.
6. Boom load ratings are based on loaded boom radius. Loaded boom angles are given as reference only.



CRANE MEETS ASME B30.5 REQUIREMENTS AT TIME OF MANUFACTURE

DO NOT PAINT OVER ANY LABELS

1141880 080708

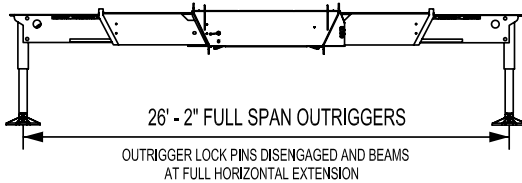
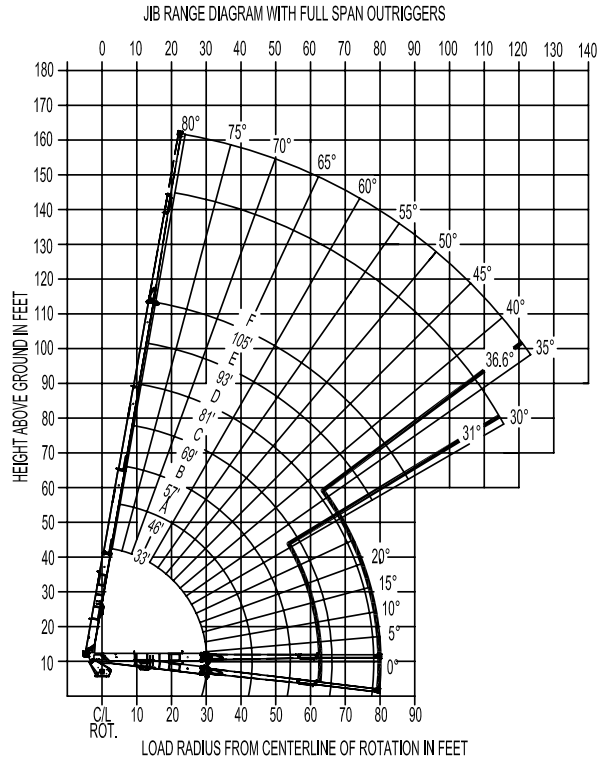
LOAD CHART - TELESCOPIC JIB, FULL-SPAN OUTRIGGERS



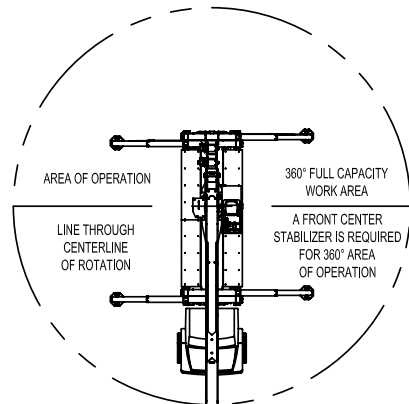
MODEL 5000 105-ft BOOM

JIB LOAD RATINGS WITH FULLY EXTENDED OUTRIGGERS

LOAD RADIUS IN FEET	32' SINGLE SECTION JIB		32-49 ft EXTENDABLE JIB			
	LOADED BOOM ANGLE	32-ft JIB 360°	LOADED BOOM ANGLE	32-ft JIB 360°	LOADED BOOM ANGLE	49-ft JIB 360°
35	77.6	6,400	77.4	6,050		
40	75.4	5,850	75.2	5,500	77.6	5,100
45	73.2	5,400	73.0	5,150	75.8	4,800
50	71.1	5,200	70.8	4,850	73.9	4,500
55	68.8	4,900	68.5	4,550	72.1	4,250
60	66.5	4,650	66.2	4,300	70.1	4,000
65	64.1	4,350	63.8	4,000	68.1	3,750
70	61.6	4,050	61.3	3,700	66.0	3,450
75	59.0	3,750	58.7	3,400	63.8	3,200
80	56.1	3,250	56.1	3,250	61.7	3,000
85	53.4	3,150	53.2	2,900	59.4	2,750
90	50.6	2,950	50.2	2,600	57.0	2,500
95	47.2	2,400	46.8	2,050	54.5	2,250
100	43.6	1,900	43.2	1,550	52.0	2,000
105	39.8	1,450	39.4	1,100	49.3	1,750
110	35.7	1,050	35.3	700	46.4	1,500
115	31.4	850	31.0	500	43.4	1,250
120					40.2	950
125					36.6	600



- NOTE:
1. Operate jib by radius when main boom is fully extended. Increase boom angle if necessary to maintain load radius.
 2. When boom is retracted, operate jib by boom angles. Do not exceed any rated jib capacities at reduced boom lengths.
 3. Capacities do not exceed 85% stability.
 4. Load ratings above bold line are structurally limited.
 5. Personnel handling is allowed only with full span outriggers.
 6. Boom load ratings are based on loaded boom radius. Loaded boom angles are given as reference only.



CRANE MEETS ASME B30.5 REQUIREMENTS AT TIME OF MANUFACTURE

DO NOT PAINT OVER ANY LABELS

1141880 080708

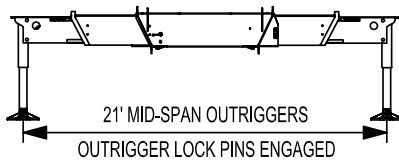
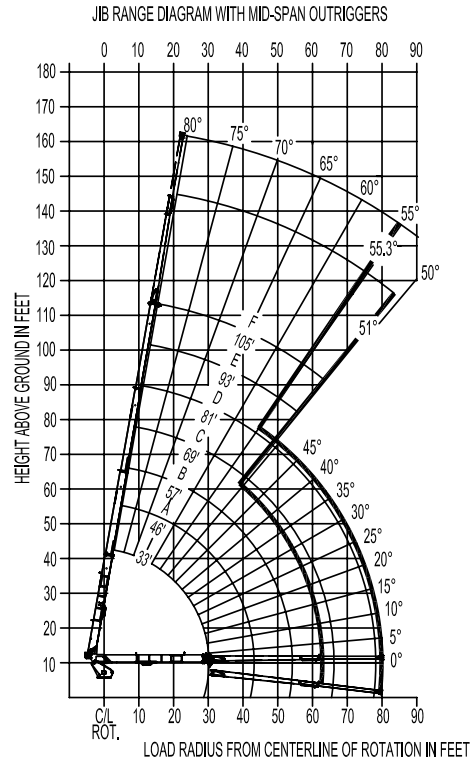
LOAD CHART - TELESCOPIC JIB, MID-SPAN OUTRIGGERS



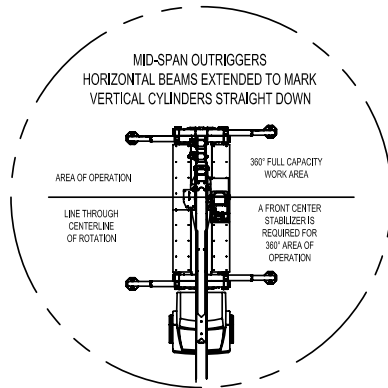
MODEL 5000 105-ft BOOM

JIB LOAD RATINGS WITH MID-SPAN OUTRIGGERS

32' SINGLE SECTION JIB			32-49 ft EXTENDABLE JIB			
LOAD RADIUS IN FEET	LOADED BOOM ANGLE	32-ft JIB 360°	LOADED BOOM ANGLE	32-ft JIB 360°	LOADED BOOM ANGLE	49-ft JIB 360°
35	77.6	6,400	77.4	6,050		
40	75.4	5,850	75.2	5,500	77.6	5,100
45	73.2	5,400	73.0	5,150	75.8	4,800
50	71.1	5,200	70.8	4,850	73.9	4,500
55	68.8	4,900	68.5	4,550	72.1	4,250
60	66.5	4,300	66.0	4,050	70.1	4,000
65	64.1	3,350	63.1	3,100	68.1	3,750
70	61.6	2,550	60.1	2,300	65.6	3,100
75	59.0	1,850	57.1	1,600	63.0	2,350
80	56.1	1,250	54.1	1,000	60.5	1,800
85	53.4	750	51.0	500	57.9	1,250
90					55.3	800



- NOTE:**
1. Operate jib by radius when main boom is fully extended. Increase boom angle if necessary to maintain load radius.
 2. When boom is retracted, operate jib by boom angles. Do not exceed any rated jib capacities at reduced boom lengths.
 3. Capacities do not exceed stability based on ISO 4305-1991.
 4. Load ratings above bold line are structurally limited.
 5. Personnel handling is allowed only with full span outriggers.
 6. Boom load ratings are based on loaded boom radius. Loaded boom angles are given as reference only.



CRANE MEETS ASME B30.5 REQUIREMENTS AT TIME OF MANUFACTURE

DO NOT PAINT OVER ANY LABELS

1141880 080708

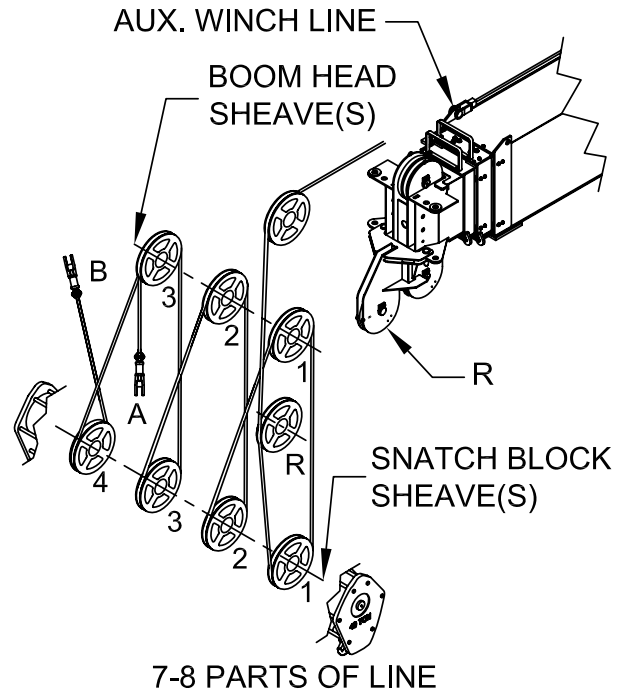
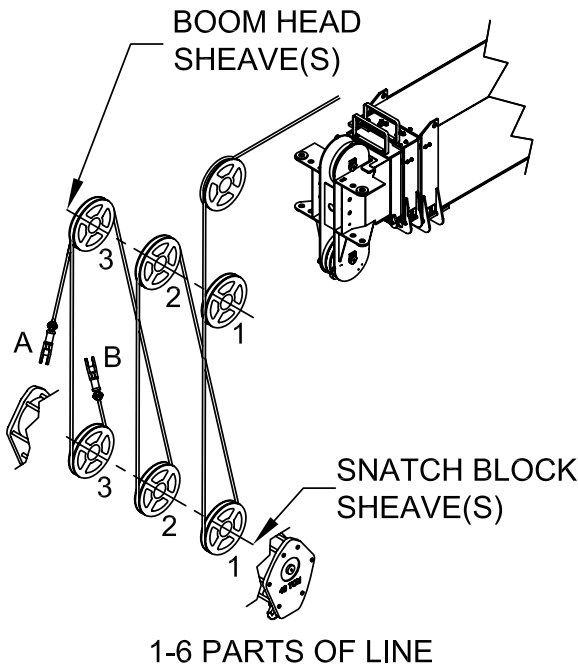
MAIN BOOM WINCH DATA



MODEL 5000

105-ft BOOM

PARTS OF LINE



NOTICE:

- DO NOT DEADHEAD LINE BLOCK AGAINST BOOM TIP WHEN EXTENDING BOOM.
- KEEP AT LEAST 5 WRAPS OF LOADLINE ON THE WINCH DRUM AT ALL TIMES.
- USE ONLY 5/8" DIAMETER WIRE ROPE, AS SPECIFIED, WITH THE PROPER BREAKING STRENGTH LISTED.
- ANTI-TWO-BLOCK SYSTEM MUST BE IN GOOD OPERATING CONDITION BEFORE OPERATING CRANE. SEE OPERATION & SAFETY MANUAL.

PARTS OF LINE	SHEAVE(S) ON BOOM HEAD	SHEAVE(S) ON SNATCH BLOCK	5/8" - SPIN RESISTANT (5:1 S.F.) 50,000-lbs. BREAKING STRENGTH	5/8" - 6X36 IWRC (3.5:1 S.F.) 45,400-lbs. BREAKING STRENGTH
1	1	A	10,000 lbs	12,500 lbs
2	1B	1	20,000 lbs	25,000 lbs
3	12	1A	30,000 lbs	37,500 lbs
4	12B	12	40,000 lbs	50,000 lbs
5	123	12A	50,000 lbs	62,500 lbs
6	123B	123	60,000 lbs	75,000 lbs
7	R123	123A	70,000 lbs	87,500 lbs
8	R123B	1234	80,000 lbs	100,000 lbs

A-DEAD END FOR ODD PARTS OF LINE
 B-DEAD END FOR EVEN PARTS OF LINE
 R-ROOSTER SHEAVE REQUIRED WHEN USING 7 AND 8 PARTS OF LINE

CRANE MEETS ASME B30.5 REQUIREMENTS AT TIME OF MANUFACTURE

DO NOT PAINT OVER ANY LABELS

1141880 080708



Elliott Equipment Company
 3514 South 25th Street
 Omaha, NE 68105

Phone: 402-592-4500
 Fax: 402-592-4553
 Email: sales@elliottequip.com

Built for You.
www.elliottequip.com

TRUCK CHASSIS SPECIFICATIONS

	50105R BoomTruck
Wheelbase (WB)	288" / 731 cm
Cab to Tandem (CT)	198" / 503 cm
Cab to End of Frame (EOF)	345" / 876 cm
Frame Section Modulus	30.0 in ³ -110,000 psi / 758,428 kPa
Front Axle Gross Weight Rating	20,000 lb / 9,072 kg
Rear Axle Gross Weight Rating	58,000 lb / 26,308 kg
Integral Front Frame Rails	Required

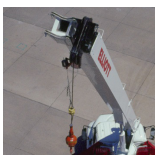
Chassis data is minimum general requirements-not for engineering.
 Actual dimensions and truck data will depend on truck selection and axle configuration.
 *Minimum chassis weight is required to meet 85% stability requirements.

OPTIONS



Radio Remote Control

Interference protected radio remotes let you get closer to your work and have full control over your machine. Optional LMI display is available.



Pin-On Jib Attachments

One piece & two piece telescoping or fixed jibs that stow on the side of the boom for easy placement while on the worksite.



Air Conditioning in Crane Cab

Work all day in comfort with an high efficiency air conditioning system mounted on the rear of the crane control cab.



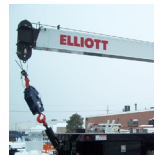
Dual Winch System & Drum Indicators

Take advantage of Elliott's auxiliary dual 10,000 lb single line pull winch package with optional winch drum rotation indicators.



Tool Boxes

Optional tool boxes and bed storage can accommodate any storage need for tools, work materials and more.



Hook Block for Multi-Part Line

Elliott can include a hook block device for up to 8 parts of line to improve lifting capabilities and allow you to maximize your use of the crane.



2-Man Yoke Work Platform

Elliott's 600 lb capacity 2-man platform features a hydraulic yoke lifting system for easy attachment to the boom tip. Fully OSHA compliant and heavy duty.



Body Mounted Hose Reels and Circuits

Let us work with you to customize your tool compatibility by adding hose reels or hydraulic circuits to the crane bed.