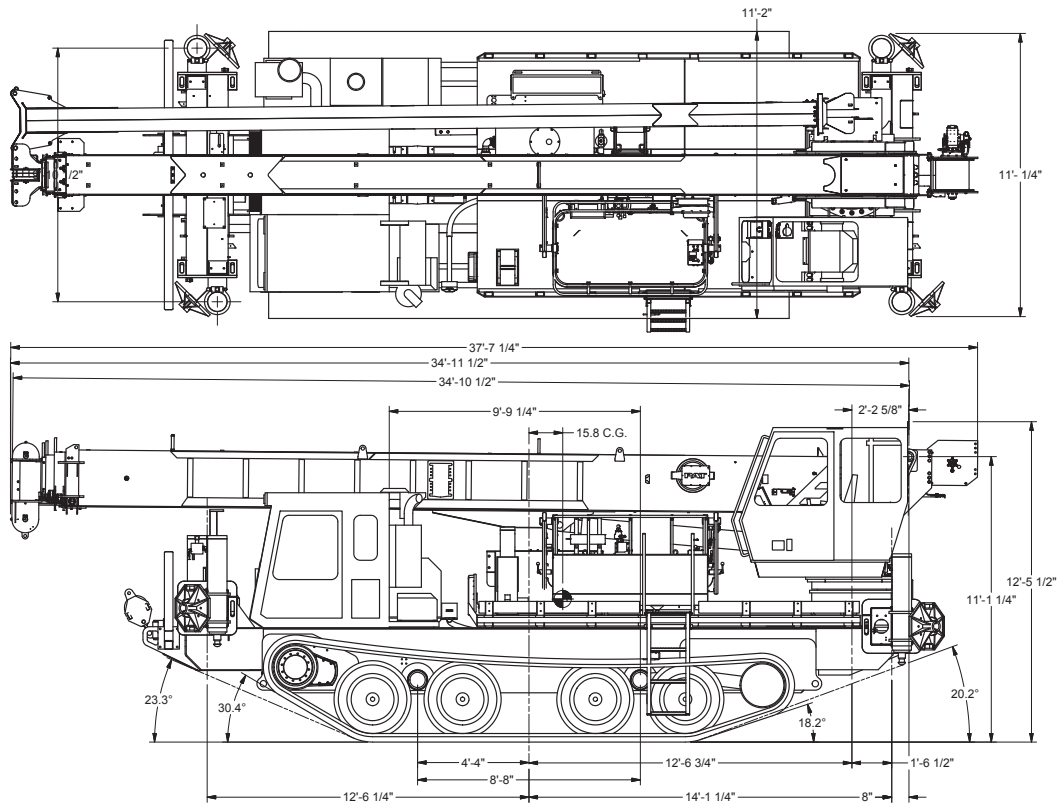




### 34142 SIDE VIEW DIAGRAM



- |                                  |                        |                                 |                           |
|----------------------------------|------------------------|---------------------------------|---------------------------|
| • <b>Maximum Vertical Reach</b>  | 201' / 61,3 m          | • <b>Powered Boom Sections</b>  | 5                         |
| • <b>Working Area</b>            | 360 Degrees            | • <b>Overall Height</b>         | 12'6" / 3,8 m             |
| • <b>Lifting Capacity</b>        | 68,000 lbs / 30 844 kg | • <b>Operator Controls</b>      | Rotating Seated Crane Cab |
| • <b>Boom Length</b>             | 142' / 43,3 m          | • <b>Outrigger Type Front</b>   | Out-Down                  |
| • <b>Crane Weight (Standard)</b> | 38,600 lbs / 17 508 kg | • <b>Outrigger Spread Front</b> | 22'4" / 6,8 m             |
| • <b>Jib Lengths</b>             | 32'-49' / 9,7-15 m     | • <b>Outrigger Type Rear</b>    | Out-Down                  |
| • <b>Winch Bare Drum Pull</b>    | 12,800 lbs / 5806 kg   | • <b>Outrigger Spread Rear</b>  | 22'4" / 6,8 m             |

## TECHNICAL SPECIFICATIONS

**Crane Capacity:** 68,000 lbs at 6' load radius.

**Maximum Tip Height:** 152' height (201' with optional 32'-49' jib)

**Control Console:** Rotating open seated controls with deluxe operator seat, electric control levers in seat console, pressure gauge, LMI display, bubble level gauge, engine start/stop switch, signal horn button, variable speed throttle switch, lifting capacity chart, range diagram chart, boom angle indicator, system pressure gauge, 12V DC power source, and cup holder. Independent ground level electric operated outrigger controls.

**Boom:** Five-section fully proportional, high strength steel plated rectangular tube sections. A maximum boom tip height of 152'. The boom nose contains one floating upper sheave and three lower sheaves. Assembly includes heavy-duty cylinder fittings, pivot pins, and replaceable wear pads.

**Winch:** Mounted at the base of the boom for a long fleet angle and flat level spooling of cable. Winch is driven by a planetary reducer and powered by a hydraulic motor. Burst-of-speed winch provides increased line speed. The winch brake is spring applied, pressure release design. Supplied with 425' of 9/16" diameter rotation resistant wire rope with a single line pull of 9,060 pounds, and a downhaul ball with swivel hook for single part line.

**Load Moment Indicator System:**

System senses hoist cylinder pressures, boom length and boom angle with hydraulic function lockout. The display console is equipped with a bar graph showing crane utilization, boom angle or boom length, a mode select controls for main boom and jib operation, and an anti-two block with an audio/visual warning and shut-off functions to limit hook-boom point contact.

**Outriggers:** Two sets of two-stage extended out and down overframe outriggers with 22'4" span. Outriggers are configured for full span operation. Outriggers equipped with ball socket aluminum removable pads that stow on vertical outrigger legs.

**Frame:** 4-plate design sub-frame inside track tub. Sub-frame allows for bolt-on addition of steel diamond plated bed with stake pockets.

**Turret:** Reverse offset turret is one-piece weldment. Turret rotates on large diameter ball bearing.

**Rotation:** Hydraulic motor drives turret through double reduction planetary swing drive for continuous rotation. The swing drive system has a spring applied, pressure release brake.

**Lift:** One double-acting long stroke cylinder provides smooth and stable boom elevation. Holding valve prevents boom from falling in event of hose failure.

**Boom Extension:** Incorporates a 2-stage hydraulic extension cylinder, attached to the largest boom section, with a proportional cable extension system driving the outermost sections.

**Hoses:** All high pressure hoses are wire braid reinforced with a minimum safety factor of 4 to 1.

**Cylinders:** All cylinders use microhoned cylinder tubing, chrome shafts, top grade packing and protective rod wipers. Cylinder-mounted holding valves provided on all load-holding cylinders.

**Hydraulic System:** Equipped with piston pump, SAE O-ring face seals on pressure lines, and a 10-micron return line filter. The control valve distributes all flow to hoist system, swing circuit, and other crane functions. System is closed center type.

**Oil Tank Capacity:** 120 gallon mounted on top of bed.

**Cab Equipment:** U/L approved 5:BC dry chemical fire extinguisher installed in truck cab.

**Operators Manual & Video:** Two CD copies and one hard copy of operation, maintenance, safety and parts manual provided with each unit. Operational and safety video provided at delivery.

**Installation:** Unit installed on track vehicle, painted, system and tank filled with oil, tested, inspected, and ready to operate.

**Standard Paint:** Paint turret and boom white, outriggers red, and bed and boxes black.

**Weight:** Approximately 38,600 lbs.

**Track Vehicle Required:** 40,000 lb payload capacity, 12V electrical system with high capacity alternator. Contact factory for complete specification review.

**Options:**

Rotating Seated Controls with Enclosed Operator Cab  
 Air Conditioning for Crane Cab  
 32'-49' Telescopic Jib for Workplatform  
 Two-Person Hydraulic Dampening Yoke Workplatform  
 Radio Remote Controls  
 Front Brush Guard  
 Front or Rear Recovery Winch  
 Much More...

Elliott Equipment Company reserves the right to change the specification of any unit at any time without prior notice. This brochure is only a statement of general specifications on the date of this publication. For more detailed info on specific Elliott trucks go to [www.elliottequip.com](http://www.elliottequip.com)

**LOAD CHART - MAIN BOOM, FULL-SPAN OUTRIGGERS**

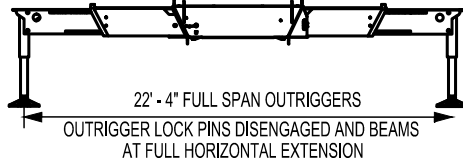


**MODEL 3400 142-ft BOOM**

LOAD RATINGS WITH FULLY EXTENDED OUTRIGGERS

**MAIN BOOM LOAD RATINGS (lbs)**

LOAD RADIUS IN FEET	LOADED BOOM ANGLE	35-ft	LOADED BOOM ANGLE	A	LOADED BOOM ANGLE	B	LOADED BOOM ANGLE	C	LOADED BOOM ANGLE	D	LOADED BOOM ANGLE	E	LOADED BOOM ANGLE	F	LOADED BOOM ANGLE	G	LOADED BOOM ANGLE	H
		47-ft		61-ft		74-ft		88-ft		101-ft		115-ft		128-ft		142-ft		
6	81.1	68,000																
8	77.7	48,000																
10	74.2	41,000	78.4	38,000														
12	70.6	35,900	75.9	33,000	79.1	30,000												
15	65	28,000	71.9	26,300	76.3	24,300	79.5	24,000										
20	54.9	20,000	65.1	19,500	71.4	19,000	75.7	17,300	78.7	16,600								
25	43	15,000	57.8	15,000	66.3	14,850	71.5	14,500	75.2	14,200	77.8	13,000	81	11,000				
30	26.3	11,000	49.8	11,800	60.6	11,400	67.2	11,900	71.7	11,900	75	11,100	77.5	9,800	79.3	8,000		
35			40.5	9,000	54.5	9,150	62.8	9,700	68.1	9,700	72	9,300	75	8,700	77	7,800	79.1	6,000
40			28.6	6,800	48	7,400	58	8,000	64.4	8,000	68.8	7,900	72.2	7,700	74.9	7,500	77	5,600
45					40.7	6,000	52.9	6,400	60.6	6,500	65.6	6,500	69.8	6,600	72.6	6,500	74.8	5,400
50					31.9	4,700	47.3	5,200	56.5	5,300	62.3	5,300	67	5,400	70.1	5,400	72.7	5,000
55					19.8	3,600	41.2	4,100	52.3	4,200	59.1	4,200	64.2	4,400	67.6	4,400	70.5	4,400
60							34.9	3,200	48	3,300	55.5	3,300	61.2	3,500	65	3,500	68.3	3,500
65							26.4	2,500	43	2,600	51.8	2,600	58.1	2,700	62.4	2,900	65.9	2,900
70							12.9	1,300	37.3	2,000	47.6	2,000	55	2,100	59.7	2,100	63.6	2,100
75									30.8	1,400	43.1	1,500	54.6	1,600	56.9	1,600	61.2	1,600
80									22.5	800	38.2	1,000	47.8	1,100	54	1,100	58.7	1,100
85											32.7	500	43.8	500	50.8	600	56.2	600
	0	10,000	0	6,000	0	3,000	0	1,000										
DEDUCTIONS FOR STOWED PLATFORM EXTENSION		900		650		500		400		350		300		250		250		200



ELLIOTT EQUIPMENT CO. SUPPLIED LOADLINE EQUIPMENT DEDUCTIONS:  
 DOWNHAUL WEIGHT.....225 lbs  
 ONE SHEAVE BLOCK.....424 lbs  
 TWO SHEAVE BLOCK.....592 lbs  
 THREE SHEAVE BLOCK.....639 lbs  
 FOUR SHEAVE BLOCK.....762 lbs  
 AUXILIARY SHEAVE.....100 lbs

CRANE MEETS ASME B30.5 REQUIREMENTS AT TIME OF MANUFACTURE

1204090 111914

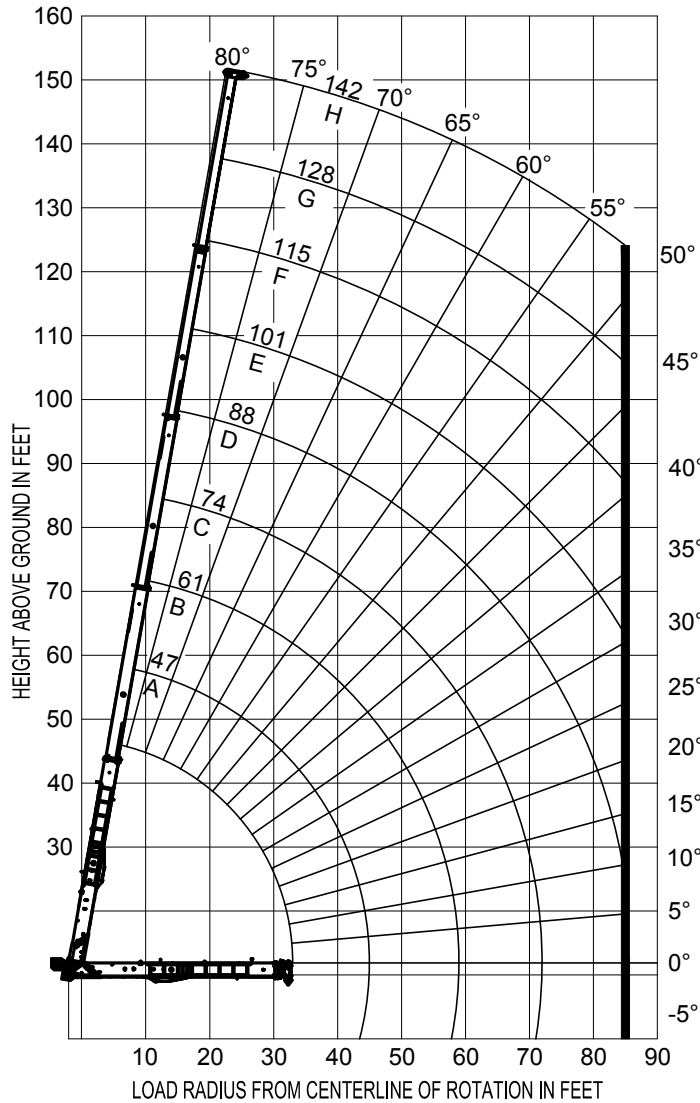
**RANGE CHART - MAIN BOOM, FULL-SPAN OUTRIGGERS**



**MODEL 3400**

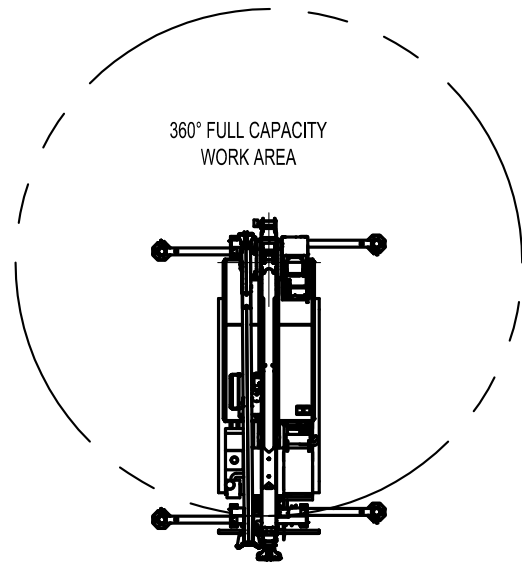
**142-ft BOOM**

**RANGE DIAGRAM WITH FULL SPAN OUTRIGGERS**



**NOTE:**

1. Boom load ratings are based on loaded boom radius. Loaded boom angles are given as reference only.
2. Capacities do not exceed 85% stability.
3. Personnel handling is allowed only with full span outriggers.



CRANE MEETS ASME B30.5 REQUIREMENTS AT TIME OF MANUFACTURE

1204090 111914



Elliott Equipment Company  
 3514 South 25th Street  
 Omaha, NE 68105  
 Phone: 402-592-4500  
 Fax: 402-592-4553  
 Email: sales@elliottequip.com

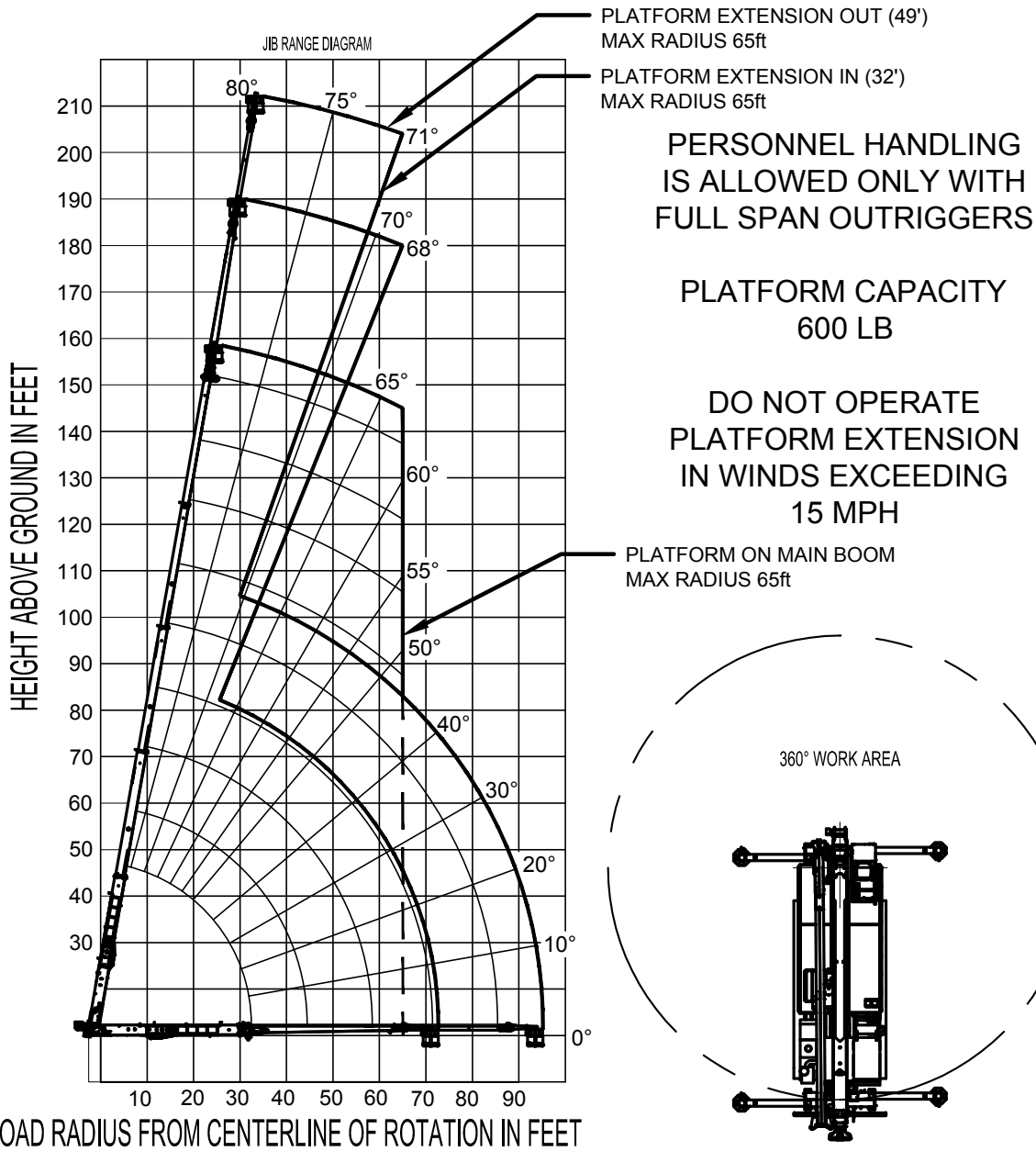
**Built for You.**  
[www.elliottequip.com](http://www.elliottequip.com)

**RANGE CHART - JIB + WORK PLATFORM, FULL-SPAN OUTRIGGERS**



**MODEL 3400 142-ft BOOM**

**RANGE DIAGRAM WITH PLATFORM ATTACHED AND 32 / 49 FT PLATFORM EXTENSION**



CRANE MEETS ASME B30.5 REQUIREMENTS AT TIME OF MANUFACTURE

1204090 111914



Elliott Equipment Company  
 3514 South 25th Street  
 Omaha, NE 68105  
 Phone: 402-592-4500  
 Fax: 402-592-4553  
 Email: sales@elliottequip.com

**Built for You.**  
[www.elliottequip.com](http://www.elliottequip.com)

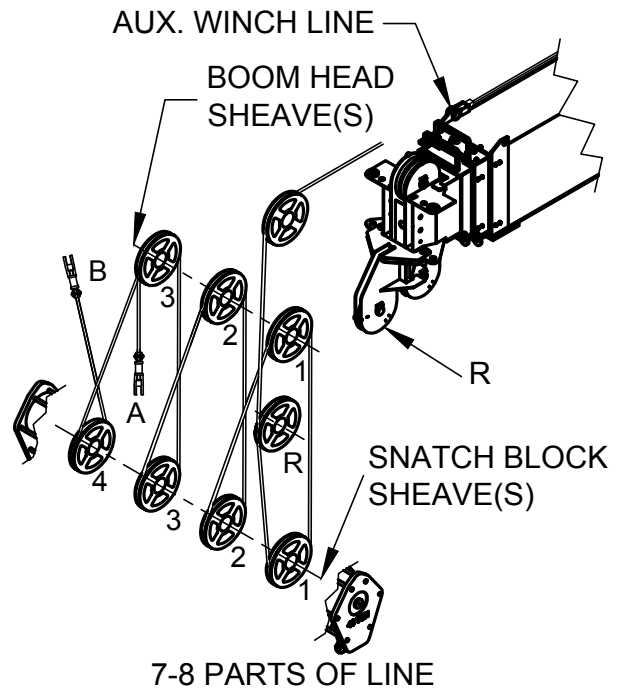
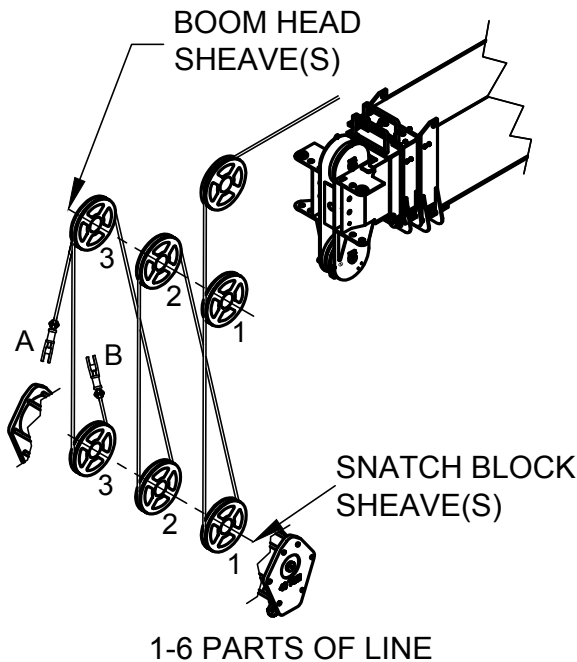
**WINCH DATA**



**MODEL 3400**

**142-ft BOOM**

**PARTS OF LINE**



**NOTICE:**

- DO NOT DEADHEAD LINE BLOCK AGAINST BOOM TIP WHEN EXTENDING BOOM.
- KEEP AT LEAST 5 WRAPS OF LOADLINE ON THE WINCH DRUM AT ALL TIMES.
- USE ONLY 9/16" DIAMETER WIRE ROPE, AS SPECIFIED, WITH THE PROPER BREAKING STRENGTH LISTED.
- ANTI-TWO-BLOCK SYSTEM MUST BE IN GOOD OPERATING CONDITION BEFORE OPERATING CRANE. SEE OPERATION & SAFETY MANUAL.

PARTS OF LINE	SHEAVE(S) ON BOOM HEAD	SHEAVE(S) ON SNATCH BLOCK	9/16" - SPIN RESISTANT (5:1 S.F.) 45,300-lbs. BREAKING STRENGTH
1	1	A	9,060 lbs
2	1 B	1	18,120 lbs
3	12	1 A	27,180 lbs
4	12 B	12	36,240 lbs
5	123	12 A	45,300 lbs
6	123 B	123	54,360 lbs
7	R 123	123 A	63,420 lbs
8	R 123 B	123 4	68,000 lbs

A-DEAD END FOR ODD PARTS OF LINE  
 B-DEAD END FOR EVEN PARTS OF LINE  
 R-ROOSTER SHEAVE REQUIRED WHEN USING 7 AND 8 PARTS OF LINE

CRANE MEETS ASME B30.5 REQUIREMENTS AT TIME OF MANUFACTURE

1204090 111914



Elliott Equipment Company  
 3514 South 25th Street  
 Omaha, NE 68105  
 Phone: 402-592-4500  
 Fax: 402-592-4553  
 Email: sales@elliottequip.com

**Built for You.**  
[www.elliottequip.com](http://www.elliottequip.com)

**TRACK VEHICLE SPECIFICATIONS**

	34142 BoomTruck
Overall Length	330" / 838 cm
Overall Width	134" / 340 cm
Overall Height	116" / 295cm
Payload Capacity	40,000 lbs / 18 144 kg
Electrical System	12 Volt
Drive System	Hydrostatic

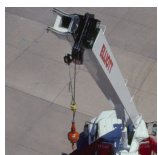
Chassis data is minimum general requirements-not for engineering.  
 Actual dimensions and track vehicle data will depend on machine selection and configuration.  
 \*Minimum chassis weight is required to meet 85% stability requirements.

**OPTIONS**



**Radio Remote Control**

Interference protected radio remotes let you get closer to your work and have full control over your machine. Includes battery charging feature and optional LMI screen.



**Pin-On Jib Attachment**

Two piece telescoping jib that stows on the side of the boom for easy placement while on the job site.



**Brush Guard**

Heavy-duty steel brush guard prevents tree limbs and other materials from damaging the vehicle or obscuring visibility.



**High-Power Recovery Winch**

A front mounted recovery winch improves equipment recovery in extreme environments like mud, sand or swamp.



**Operator Cab**

The optional enclosed crane operator cab includes windshield wipers, intuitive control systems, and optional heating and air conditioning.



**Hook Block for Multi-Part Line**

Elliott can install up to a 7-part hook block to improve lifting capabilities. The block can stored on the bed for transport.



**2-Man Yoke Work Platform**

Elliott's new 1,200 lb capacity 2-man platform features a hydraulic yoke lifting system for easy attachment to the boom tip. Fully OSHA compliant and heavy duty.



**Body Mounted Hose Reels and Circuits**

Let us work with you to customize your tool compatability by adding hose reels or hydraulic circuits to the crane bed.